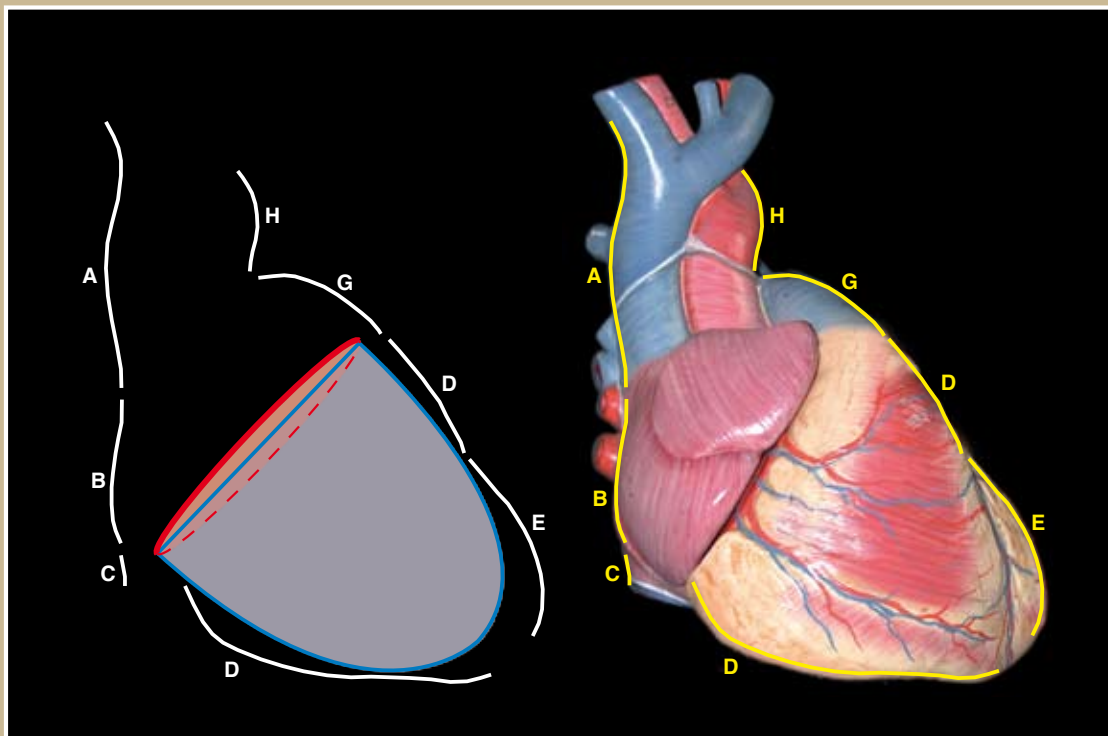


EDGE FORMING STRUCTURES OF THE HEART



J. van der Wal - H. Rensema - R. Trompert
English edition: A. Herrler
Department of Anatomy and Embryology
UNIVERSITY OF MAASTRICHT

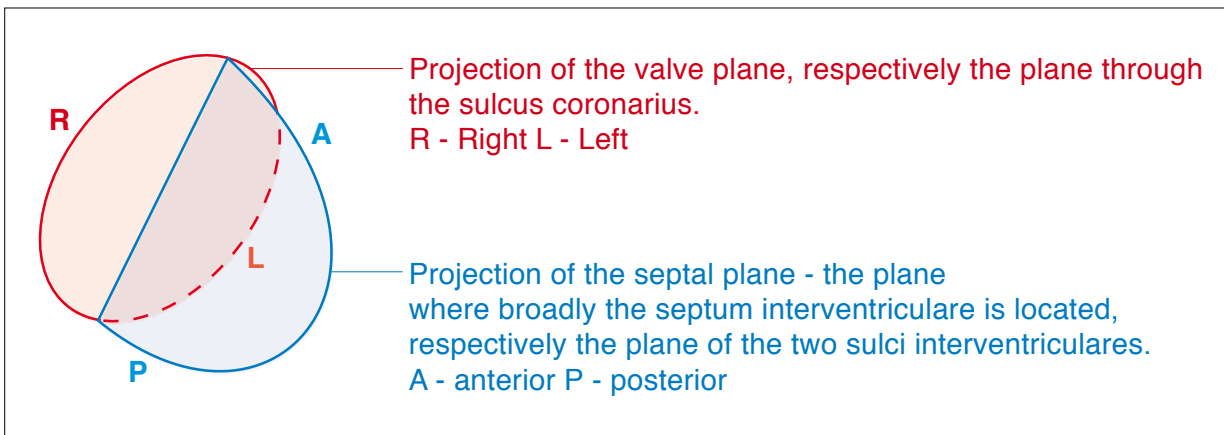


1

EDGE FORMING STRUCTURES OF THE HEART

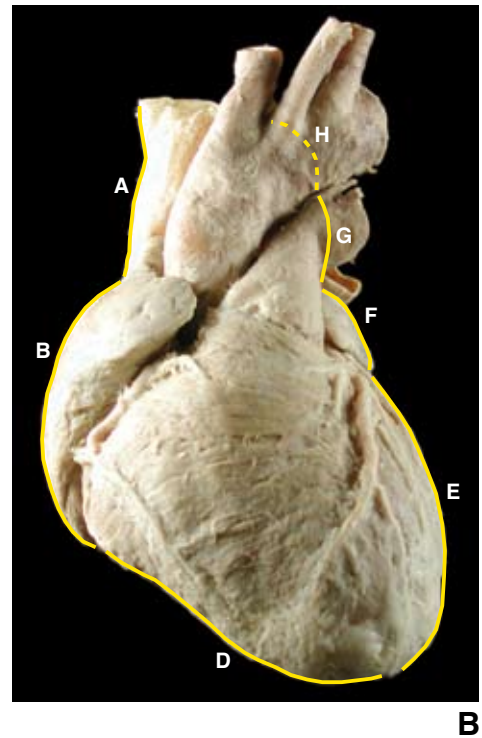
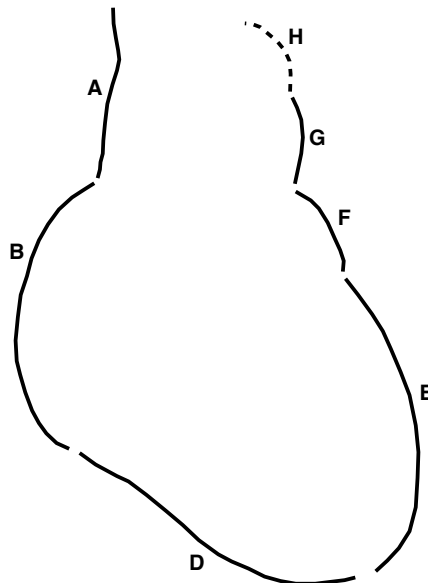
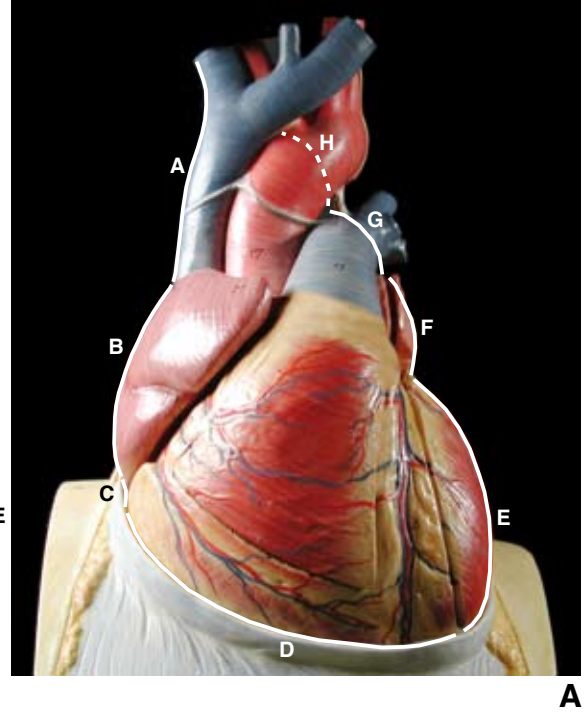
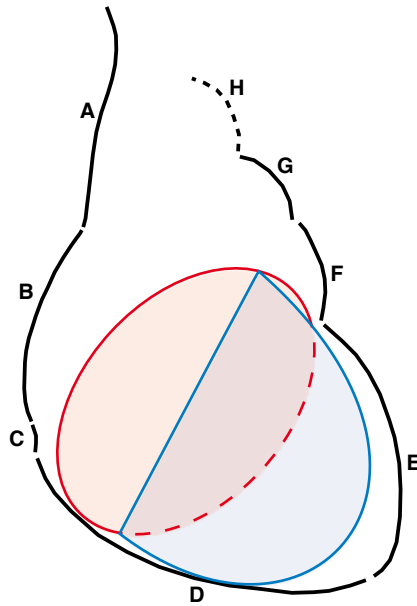
LEGENDA

symbol	name	keynumber
A	Vena cava superior	34
B	right atrium	82
	resp. right heart ear	78d
C	Vena cava inferior	36
D	right ventricle	86
E	left ventricle	96
F	left atrium	93
	resp. left heart ear	78s
G	Truncus pulmonalis	91
H	Arcus aortae	27
	resp. Aorta ascendens	102



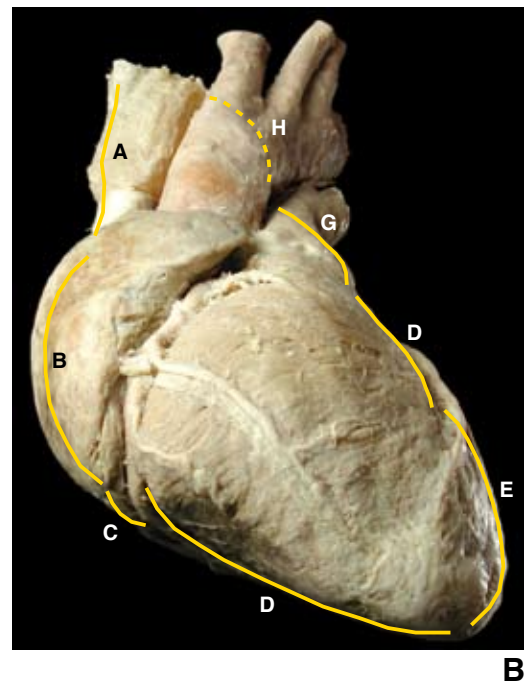
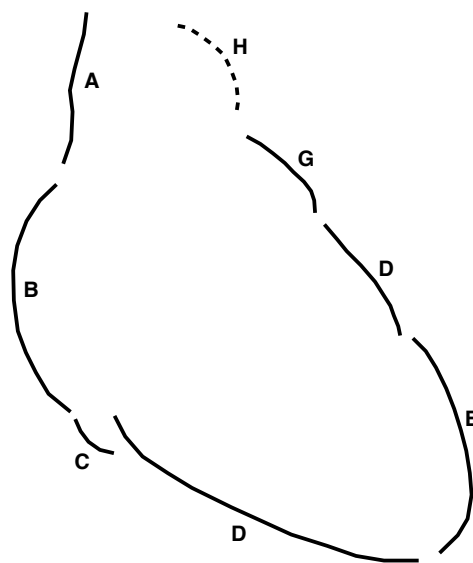
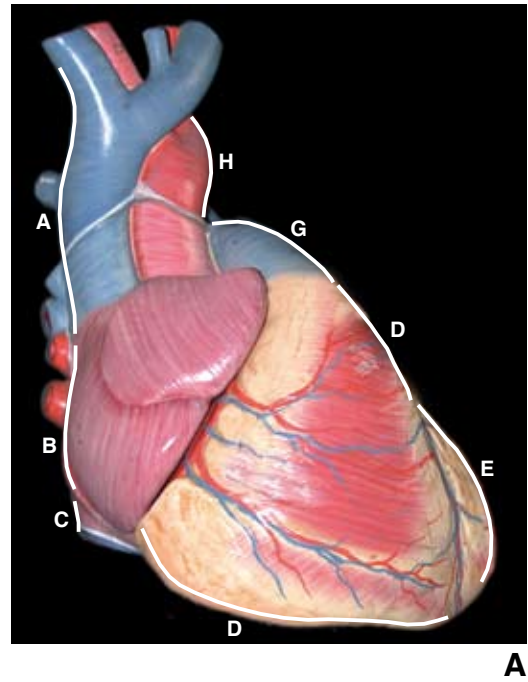
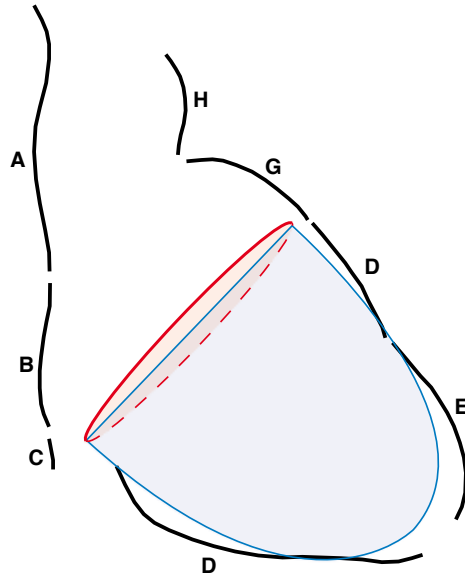
Edge forming structures of the heart 1

view: AP (antero-posterior)



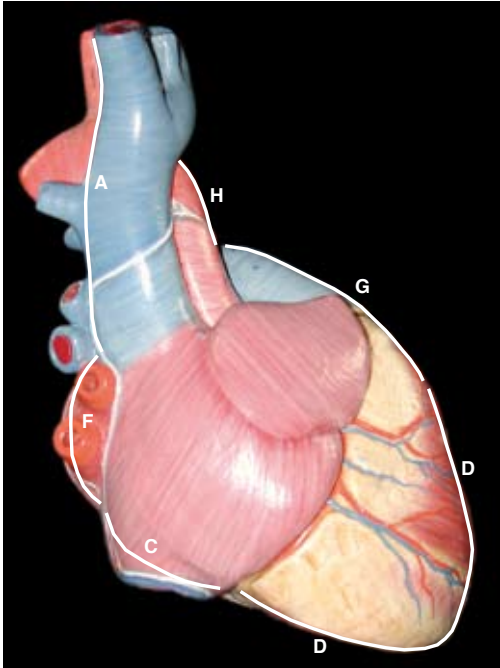
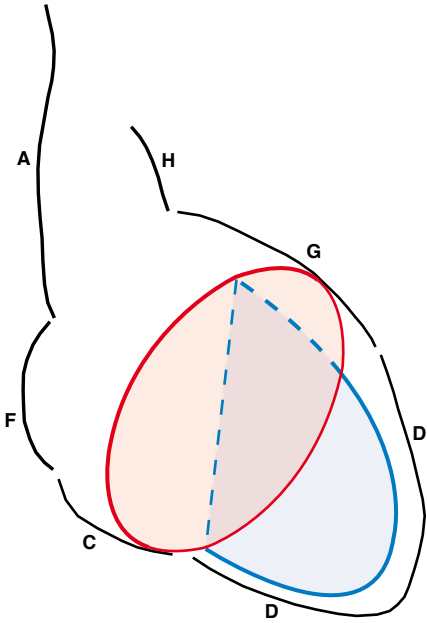
Edge forming structures of the heart 2

view: right oblique, from the front

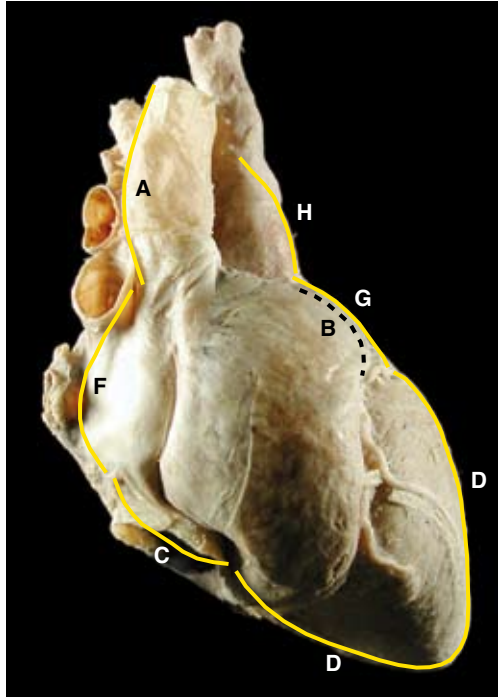
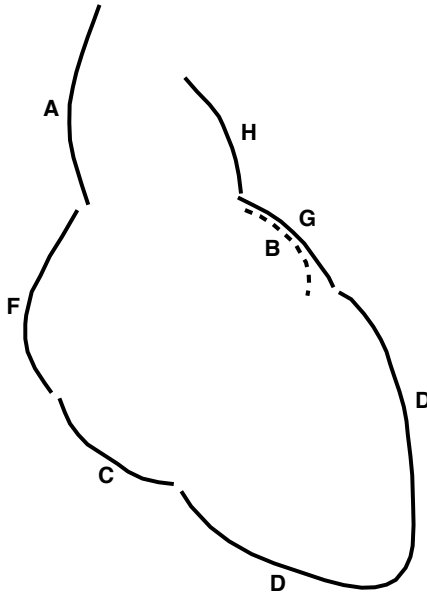


Edge forming structures of the heart 3

view: lateral, from the right



A

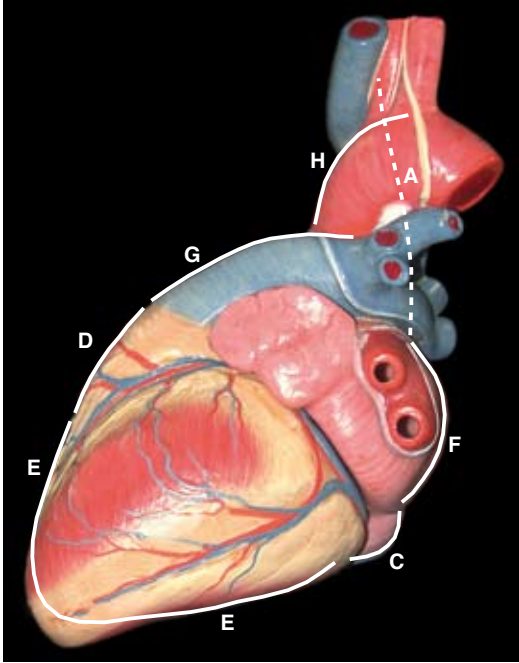
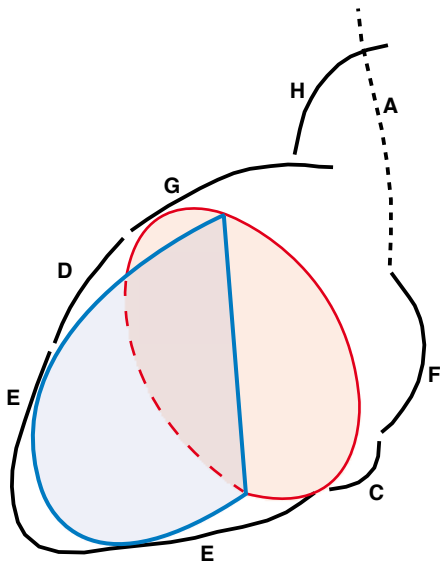


B

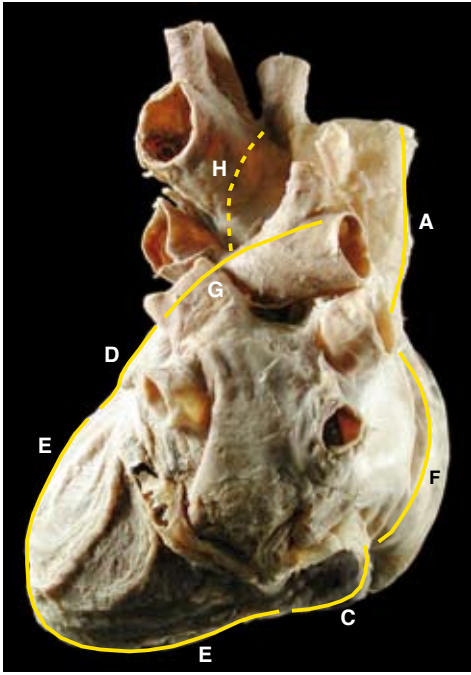
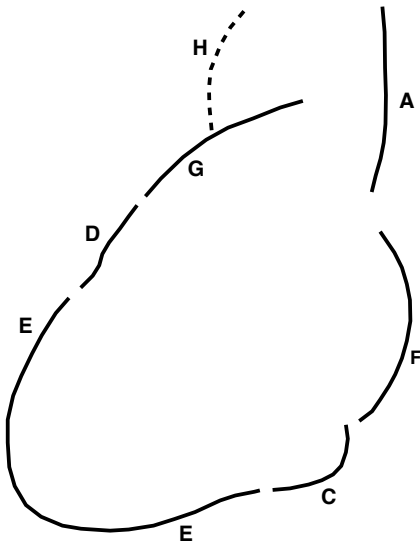
A: Somso-model HS22 - AE model A.18.10 - B: geplasteerd hartpreparaat A/E
 fotografie: R. Trompert - capaciteitsgroep Anatomie/Embryologie FdG-UM
 bewerking / illustraties: H. Rensema - capaciteitsgroep Anatomie/Embryologie FdG-UM
 Copyright: capaciteitsgroep Anatomie/Embryologie FdG-UM (2001)

Edge forming structures of the heart 4

view: lateral, from the left



A

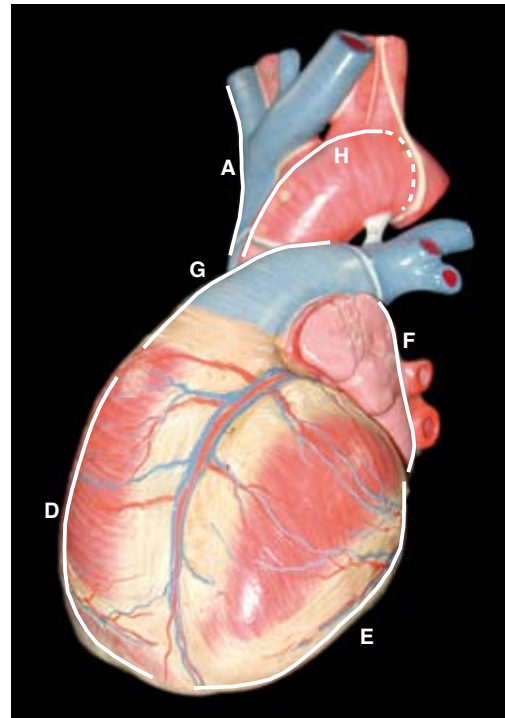
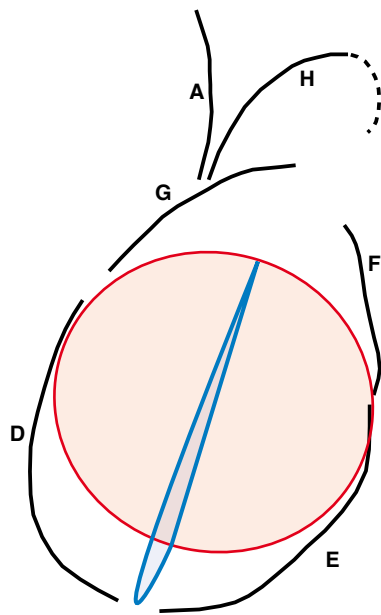


B

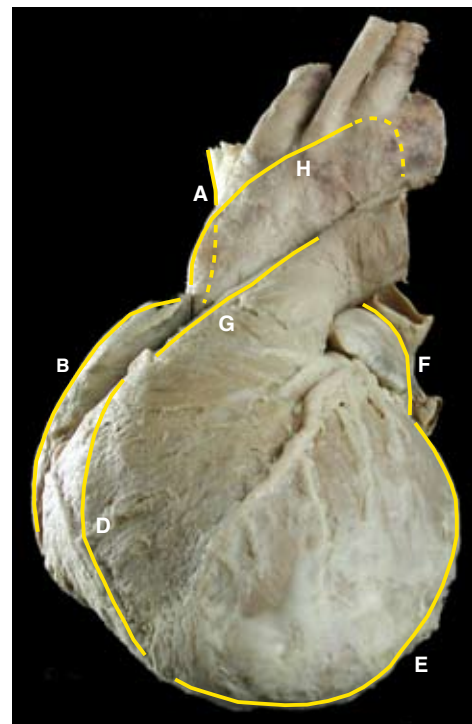
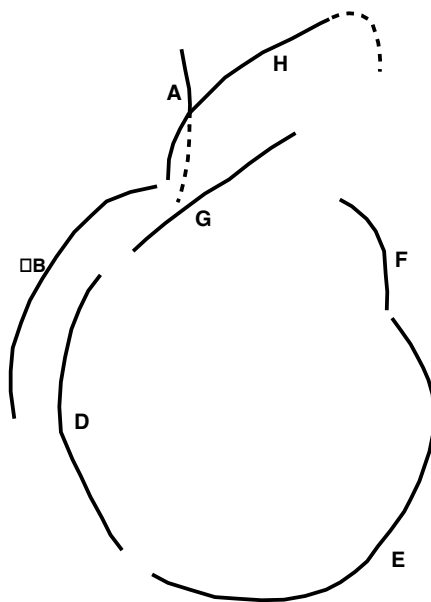
A: Somso-model HS22 - AE model A.18.10 - B: geplasteerd hartpreparaat A/E
 fotografie: R. Trompert - capaciteitsgroep Anatomie/Embryologie FdG-UM
 bewerking / illustraties: H. Rensema - capaciteitsgroep Anatomie/Embryologie FdG-UM
 Copyright: capaciteitsgroep Anatomie/Embryologie FdG-UM (2001)

Edge forming structures of the heart 5

view: left oblique, from the front



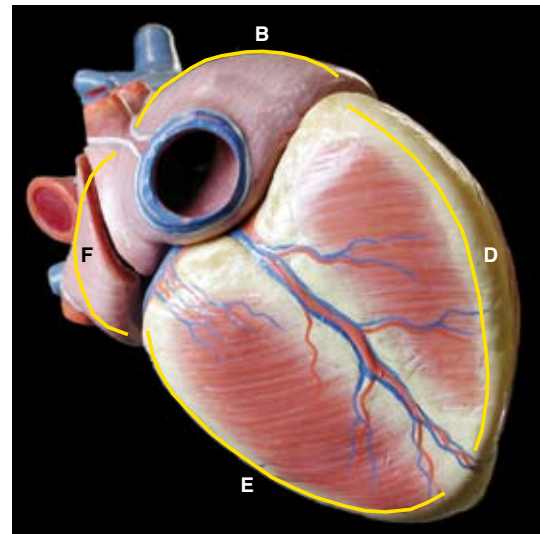
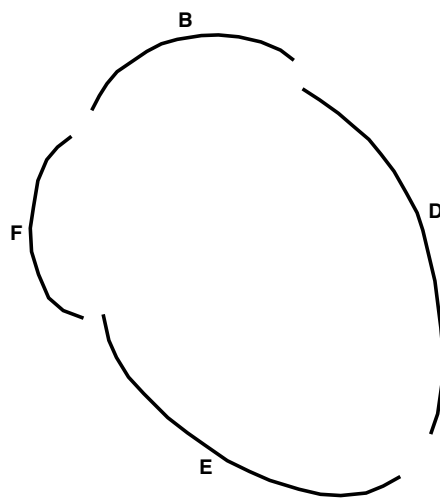
A



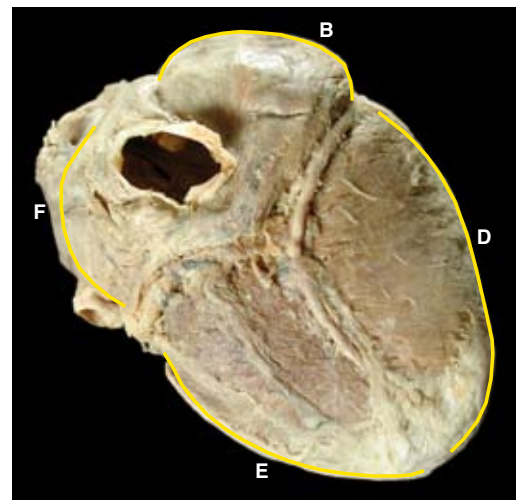
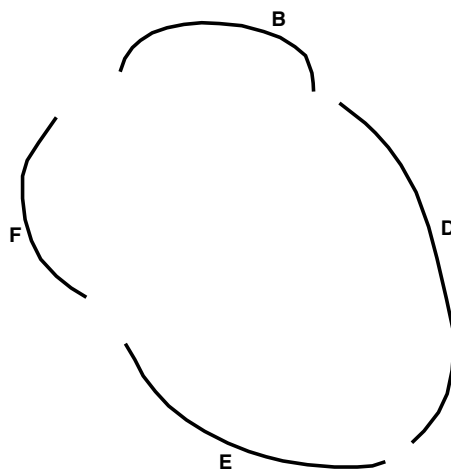
B

Edge forming structures of the heart 6

view: caudal



A



B