

**ONTWORPEN
EN
VERVAARDIGD
DOOR**

**Capaciteitsgroep
Anatomie/
Embryologie
UM**

i.s.m.

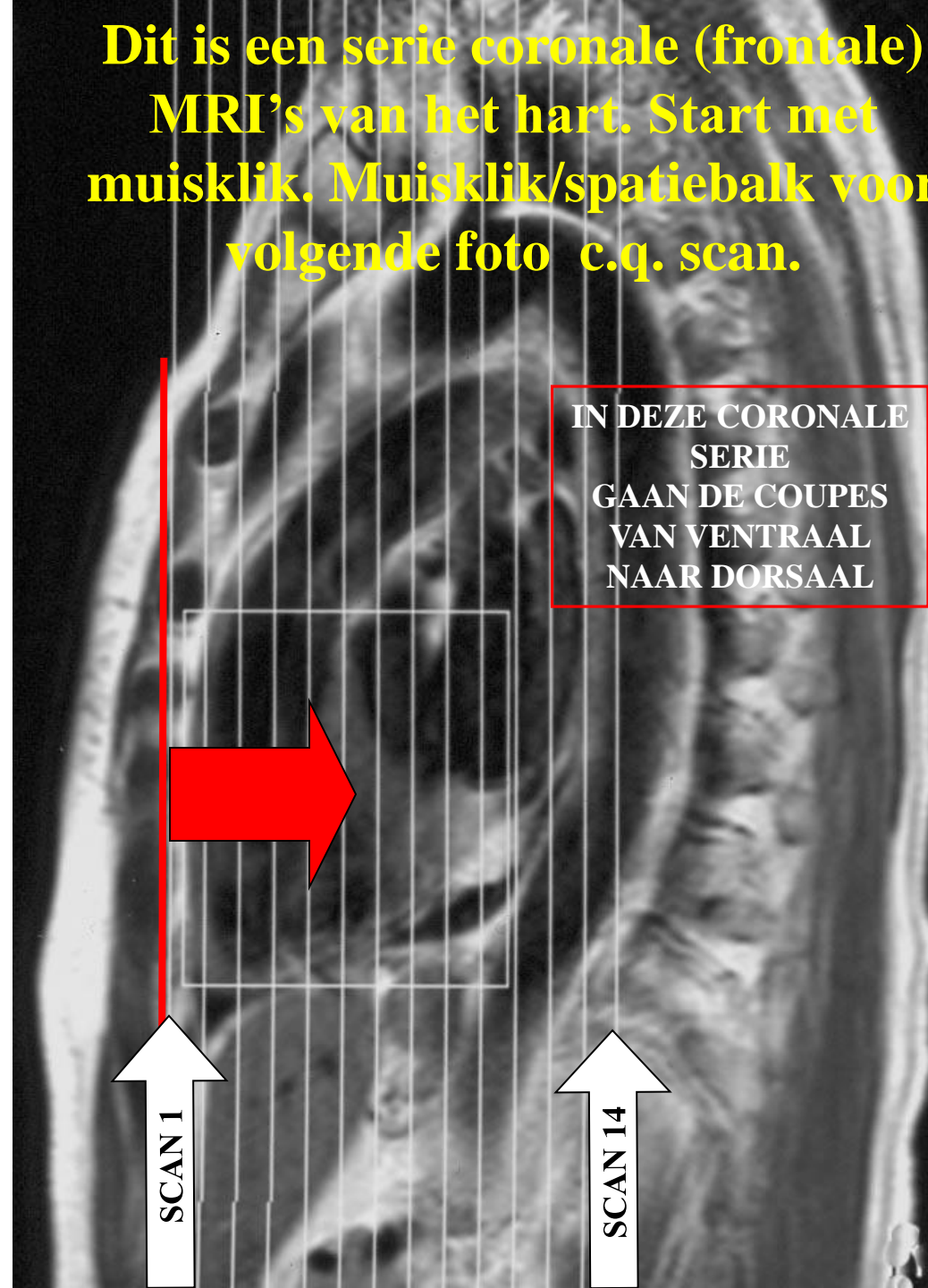
**Afdeling
Radiologie
AZM**

**J.C. van der Wal
H. van Mameren
G. Snoep**

**januari
2002**

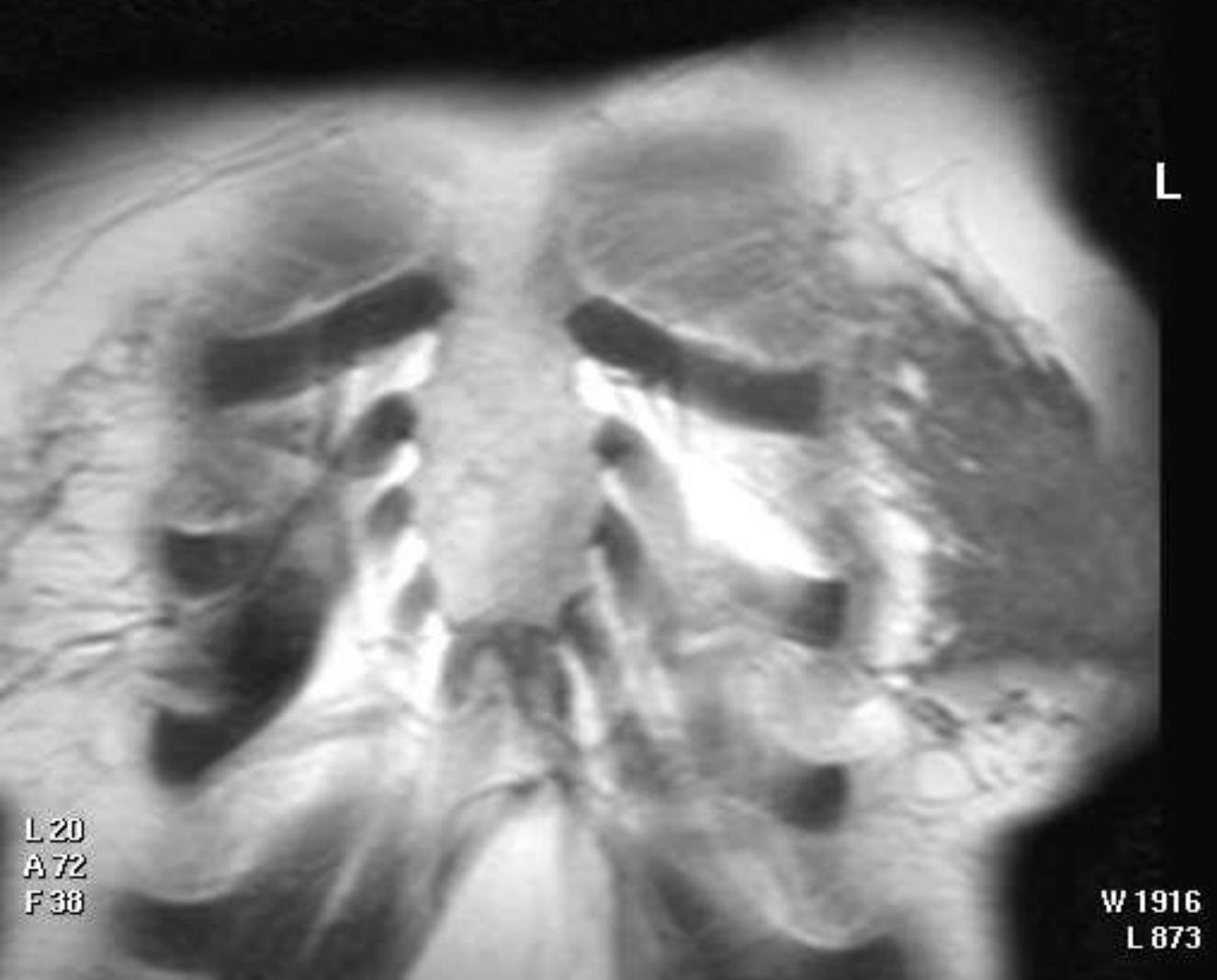
Versie
2004

**Dit is een serie coronale (frontale)
MRI's van het hart. Start met
muisklik. Muisklik/spatiebalk voor
volgende foto c.q. scan.**



**IN DEZE CORONALE
SERIE
GAAN DE COUPES
VAN VENTRAAL
NAAR DORSAAL**

Sc10/1
TSE / M
Td 600 ms



**HIER VERSCHIJNT
STEEDS DE VOOR-
GAANDE SCAN.
IN DEZE CORONALE
SERIE 1 T/M 14
GAAN DE COUPES
VAN VENTRAAL
NAAR DORSAAL**

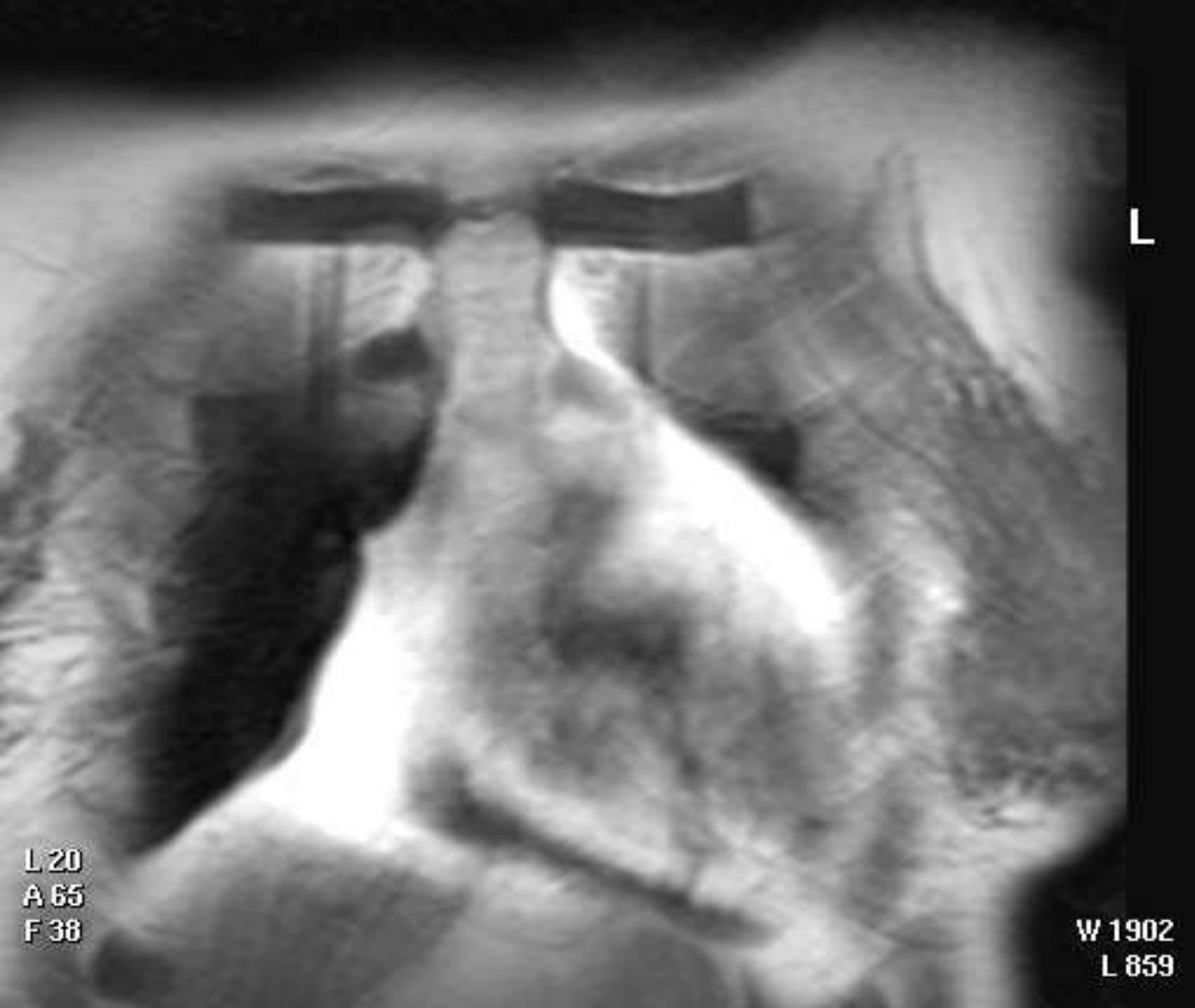
**VORIGE
SCAN**

RECHTER ATRIUM	82
RECHTER VENTRIKEL	86
LINKER ATRIUM	93
LINKER VENTRIKEL	96
TRUNCUS PULMONALIS	91
ARTERIA PULMONALIS	92
AORTA ASCENDENS	102
ARCUS AORTAE	27
AORTA THORACICA	40
VENA CAVA SUPERIOR	34
VENA CAVA INFERIOR	36
VENA PULMONALIS	95

W 1916
L 873

L 20
A 72
F 38

Sc10/2
TSE / M
Td 600 ms



L 20
A 65
F 38

W 1902
L 859

Sc10/1
TSE / M
Td 600 ms



L 20
A 72
F 38

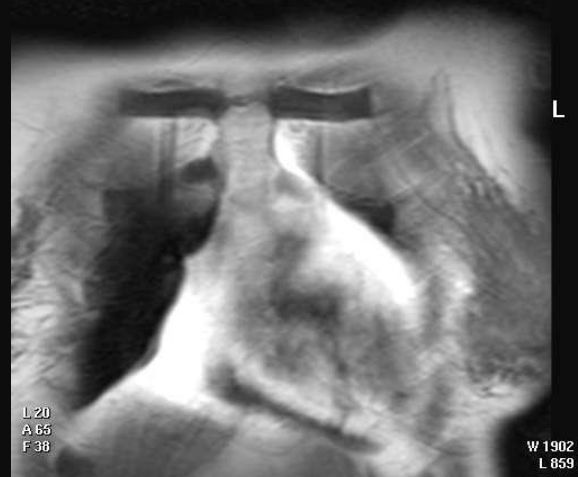
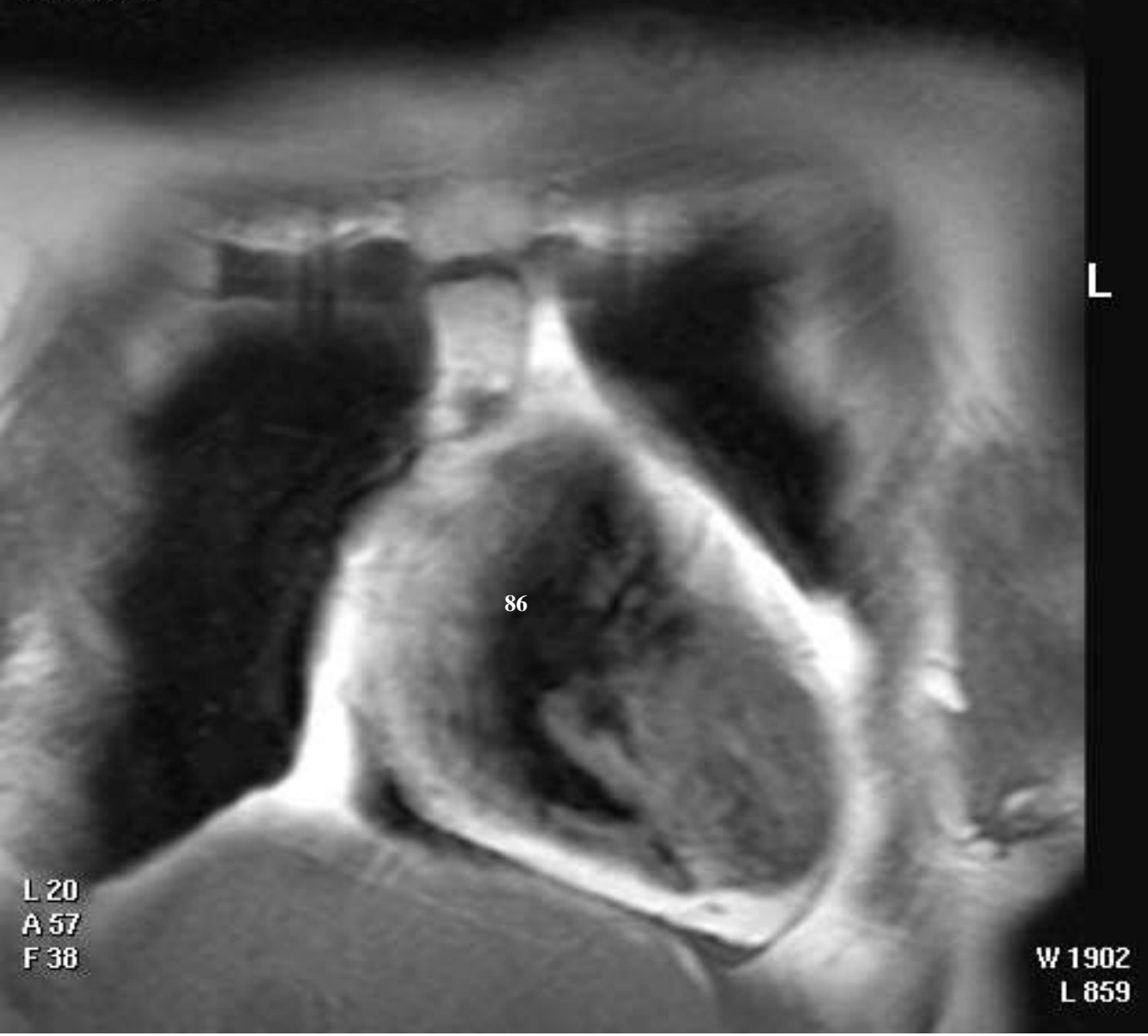
W 1916
L 873

**VORIGE
SCAN**

RECHTER ATRIUM	82
RECHTER VENTRIKEL	86
LINKER ATRIUM	93
LINKER VENTRIKEL	96
TRUNCUS PULMONALIS	91
ARTERIA PULMONALIS	92
AORTA ASCENDENS	102
ARCUS AORTAE	27
AORTA THORACICA	40
VENA CAVA SUPERIOR	34
VENA CAVA INFERIOR	36
VENA PULMONALIS	95

Sc10/3
TSE / M
Td 600 ms

Sc10/2
TSE / M
Td 600 ms



VORIGE SCAN

RECHTER ATRIUM	82
RECHTER VENTRIKEL	86
LINKER ATRIUM	93
LINKER VENTRIKEL	96
TRUNCUS PULMONALIS	91
ARTERIA PULMONALIS	92
AORTA ASCENDENS	102
ARCUS AORTAE	27
AORTA THORACICA	40
VENA CAVA SUPERIOR	34
VENA CAVA INFERIOR	36
VENA PULMONALIS	95

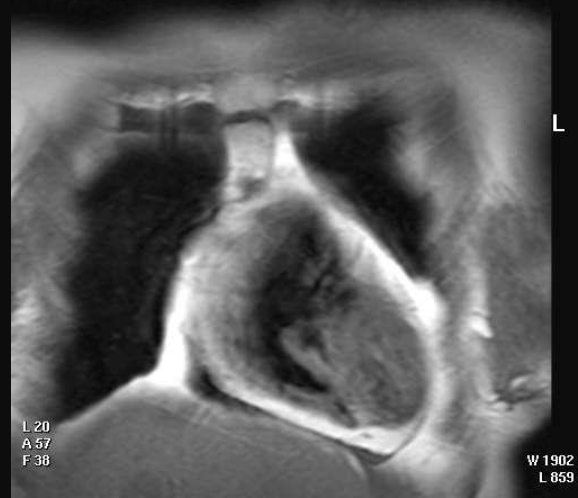
Sc10/4
TSE / M
Td 600 ms



L 20
A 49
F 38

W 1902
L 859

Sc10/3
TSE / M
Td 600 ms



L 20
A 57
F 38

W 1902
L 859

VORIGE SCAN

RECHTER ATRIUM	82
RECHTER VENTRIKEL	86
LINKER ATRIUM	93
LINKER VENTRIKEL	96
TRUNCUS PULMONALIS	91
ARTERIA PULMONALIS	92
AORTA ASCENDENS	102
ARCUS AORTAE	27
AORTA THORACICA	40
VENA CAVA SUPERIOR	34
VENA CAVA INFERIOR	36
VENA PULMONALIS	95

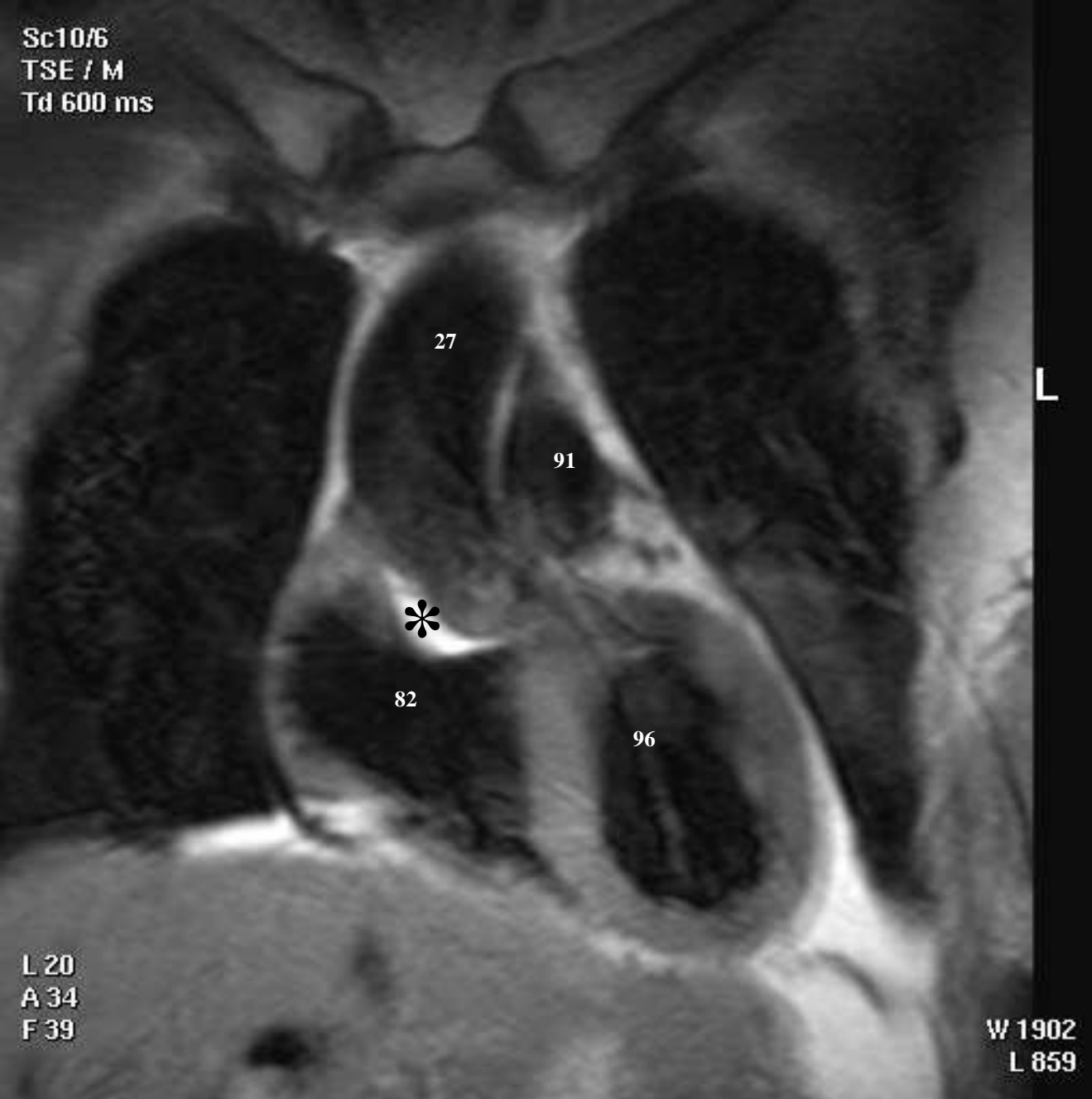
Sc10/5
TSE / M
Td 600 ms



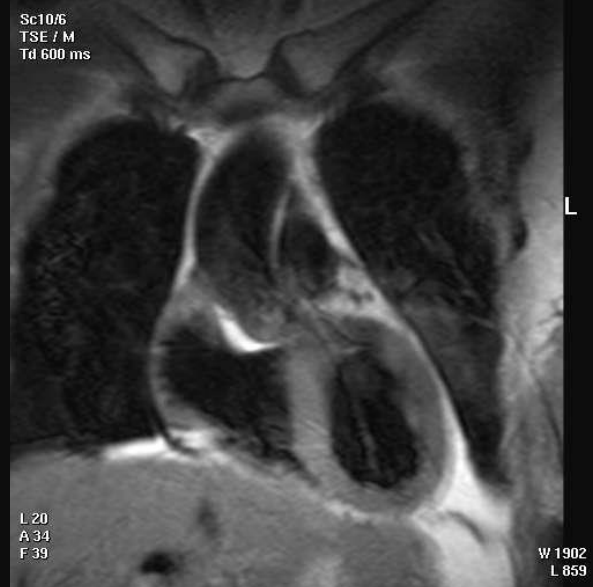
VORIGE SCAN

RECHTER ATRIUM	82
RECHTER VENTRIKEL	86
LINKER ATRIUM	93
LINKER VENTRIKEL	96
TRUNCUS PULMONALIS	91
ARTERIA PULMONALIS	92
AORTA ASCENDENS	102
ARCUS AORTAE	27
AORTA THORACICA	40
VENA CAVA SUPERIOR	34
VENA CAVA INFERIOR	36
VENA PULMONALIS	95

* Witte 'schaduw': artefact

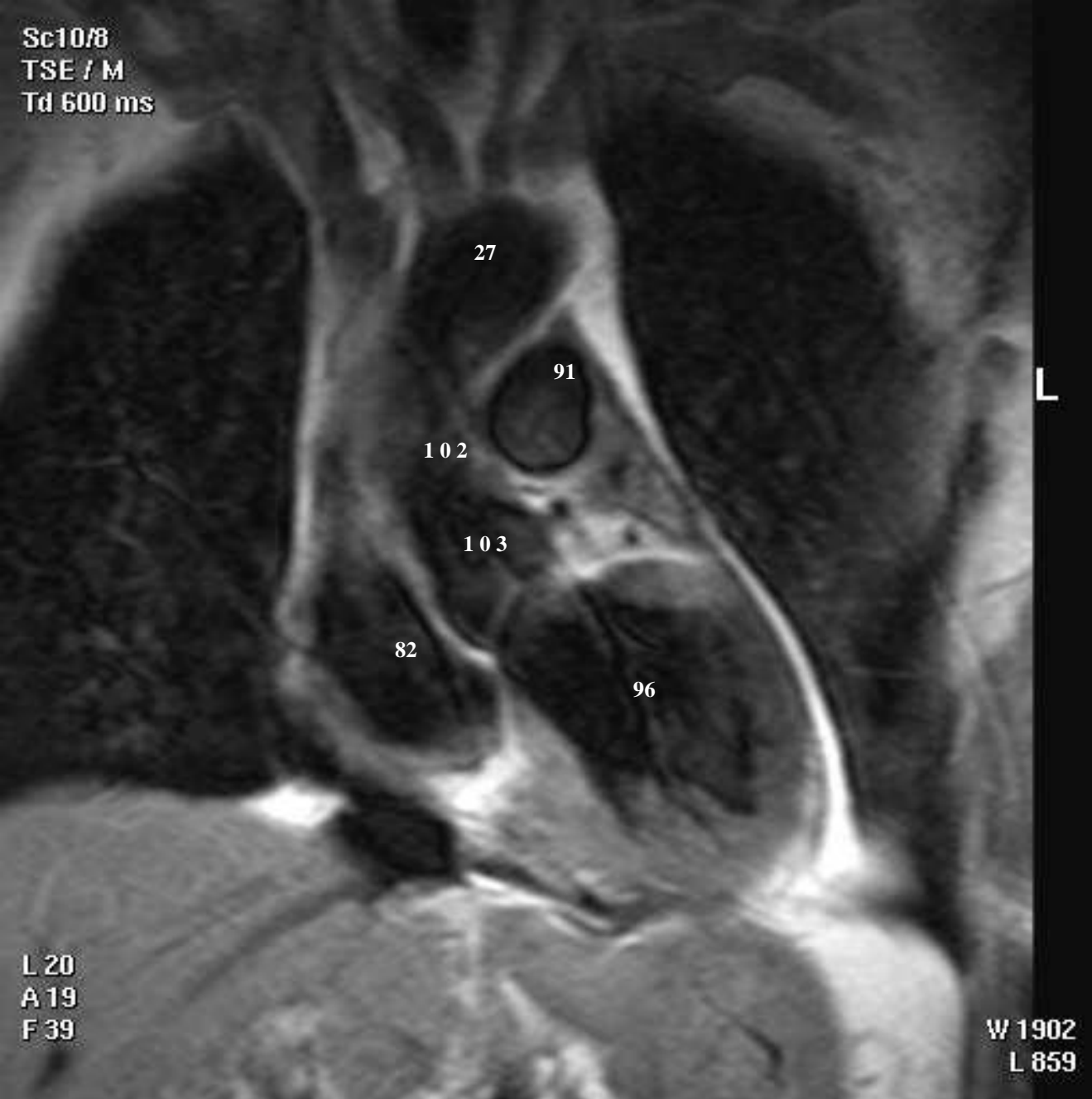


RECHTER ATRIUM	82
RECHTER VENTRIKEL	86
LINKER ATRIUM	93
LINKER VENTRIKEL	96
TRUNCUS PULMONALIS	91
ARTERIA PULMONALIS	92
AORTA ASCENDENS	102
ARCUS AORTAE	27
AORTA THORACICA	40
VENA CAVA SUPERIOR	34
VENA CAVA INFERIOR	36
VENA PULMONALIS	95



**VORIGE
SCAN**

RECHTER ATRIUM	82
RECHTER VENTRIKEL	86
LINKER ATRIUM	93
LINKER VENTRIKEL	96
TRUNCUS PULMONALIS	91
ARTERIA PULMONALIS	92
AORTA ASCENDENS	102
ARCUS AORTAE	27
AORTA THORACICA	40
VENA CAVA SUPERIOR	34
VENA CAVA INFERIOR	36
VENA PULMONALIS	95



VORIGE SCAN

RECHTER ATRIUM	82
RECHTER VENTRIKEL	86
LINKER ATRIUM	93
LINKER VENTRIKEL	96
TRUNCUS PULMONALIS	91
ARTERIA PULMONALIS	92
AORTA ASCENDENS	102
ARCUS AORTAE	27
AORTA THORACICA	40
VENA CAVA SUPERIOR	34
VENA CAVA INFERIOR	36
VENA PULMONALIS	95



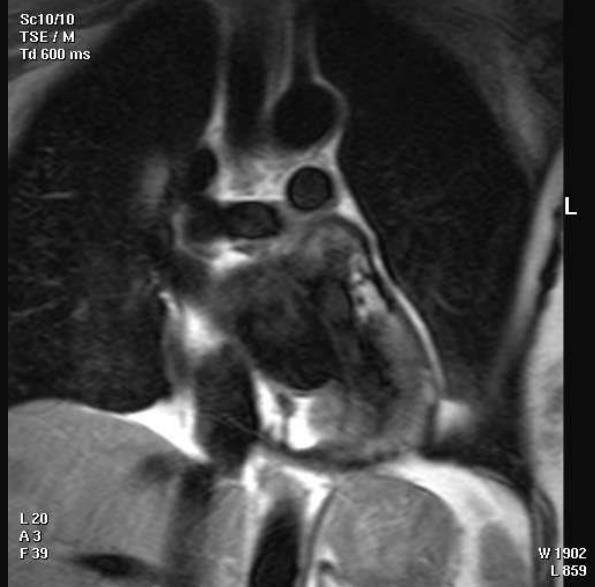
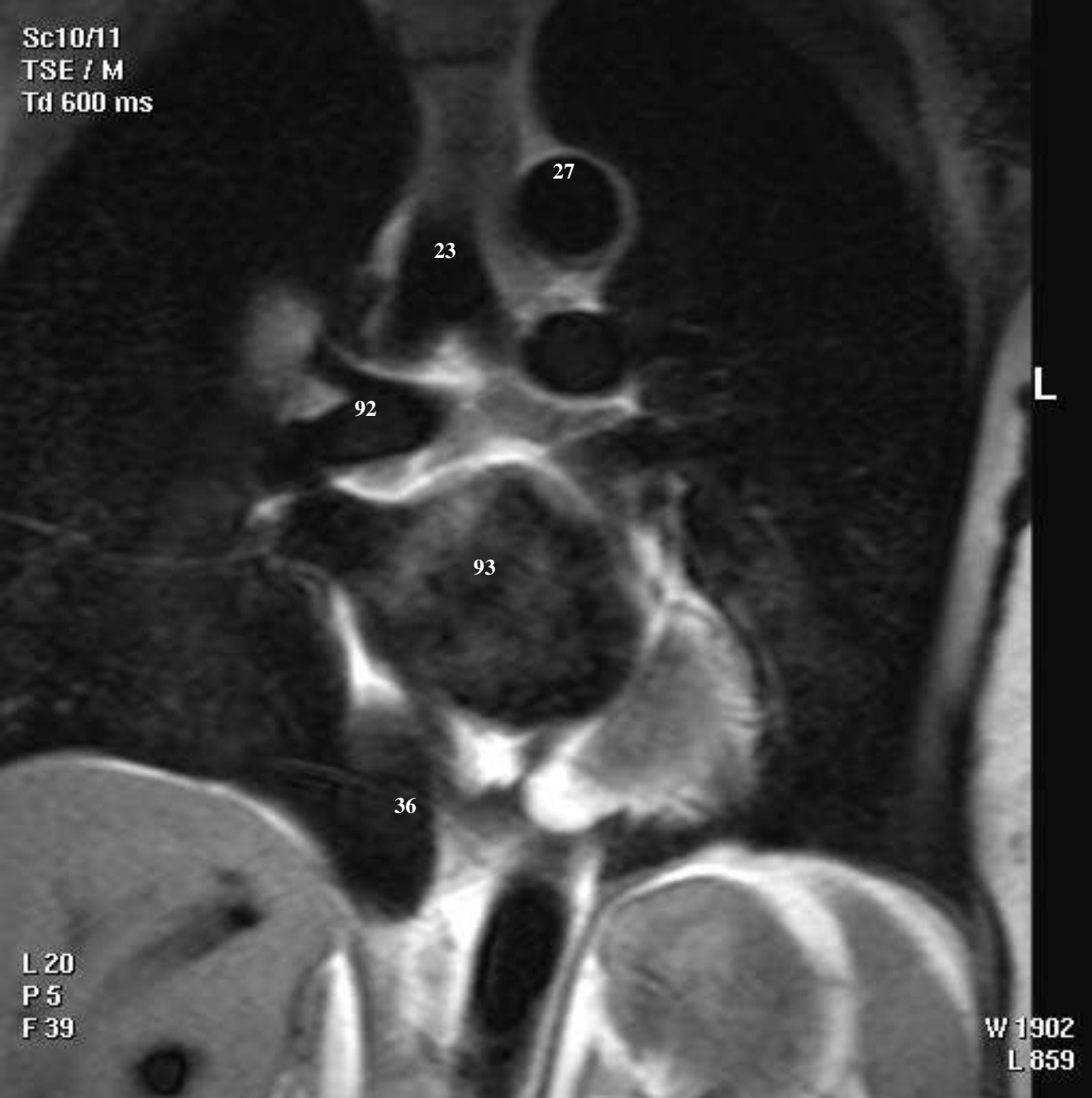
**VORIGE
SCAN**

RECHTER ATRIUM	82
RECHTER VENTRIKEL	86
LINKER ATRIUM	93
LINKER VENTRIKEL	96
TRUNCUS PULMONALIS	91
ARTERIA PULMONALIS	92
AORTA ASCENDENS	102
ARCUS AORTAE	27
AORTA THORACICA	40
VENA CAVA SUPERIOR	34
VENA CAVA INFERIOR	36
VENA PULMONALIS	95



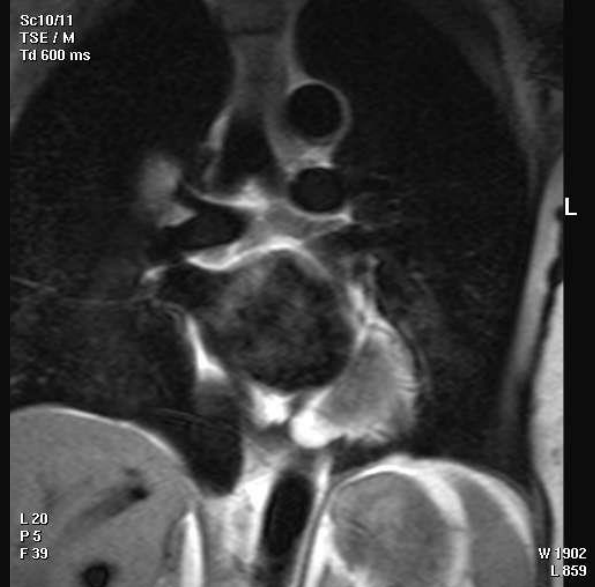
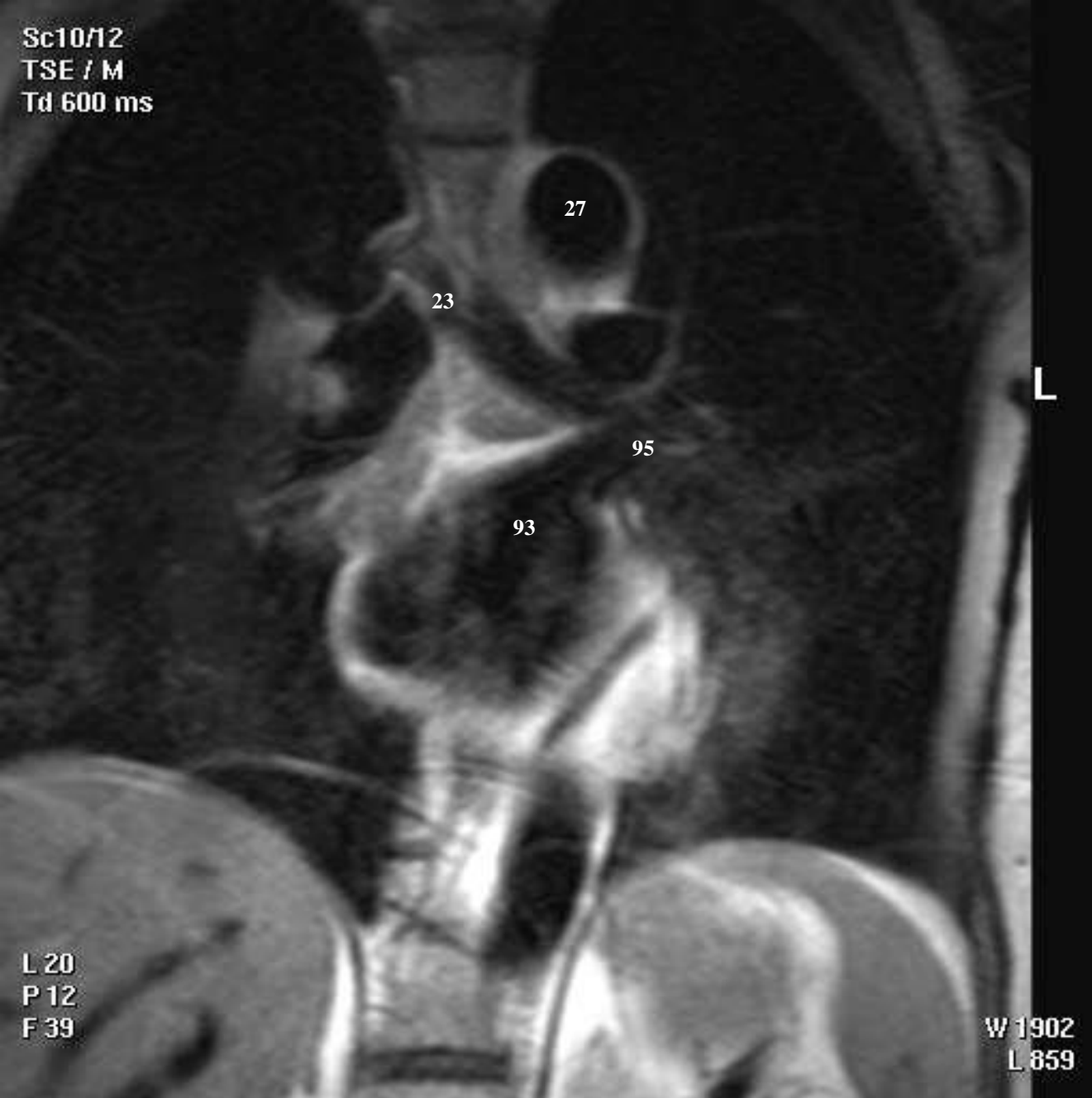
VORIGE SCAN

RECHTER ATRIUM	82
RECHTER VENTRIKEL	86
LINKER ATRIUM	93
LINKER VENTRIKEL	96
TRUNCUS PULMONALIS	91
ARTERIA PULMONALIS	92
AORTA ASCENDENS	102
ARCUS AORTAE	27
AORTA THORACICA	40
VENA CAVA SUPERIOR	34
VENA CAVA INFERIOR	36
VENA PULMONALIS	95



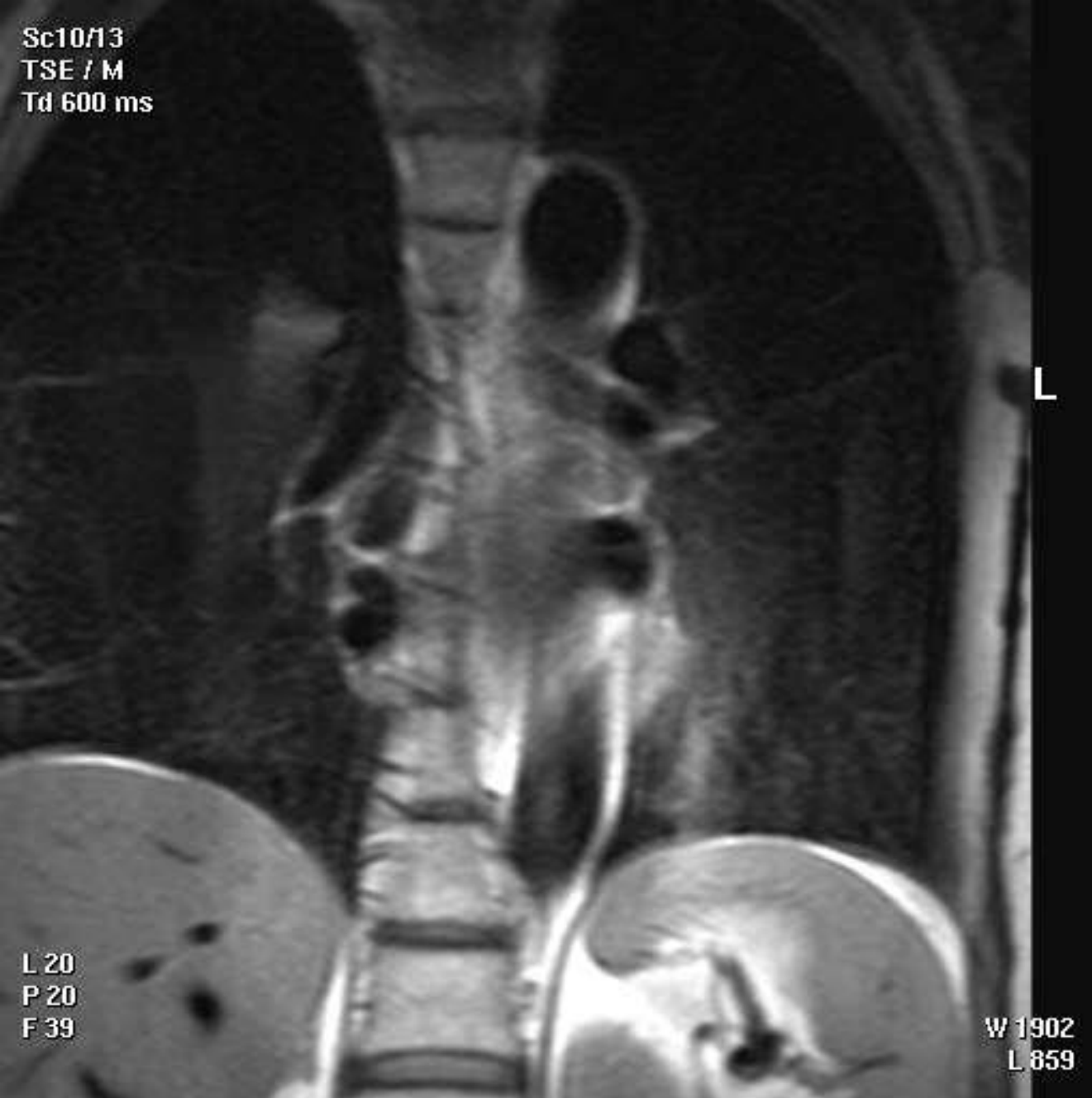
**VORIGE
SCAN**

RECHTER ATRIUM	82
RECHTER VENTRIKEL	86
LINKER ATRIUM	93
LINKER VENTRIKEL	96
TRUNCUS PULMONALIS	91
ARTERIA PULMONALIS	92
AORTA ASCENDENS	102
ARCUS AORTAE	27
AORTA THORACICA	40
VENA CAVA SUPERIOR	34
VENA CAVA INFERIOR	36
VENA PULMONALIS	95



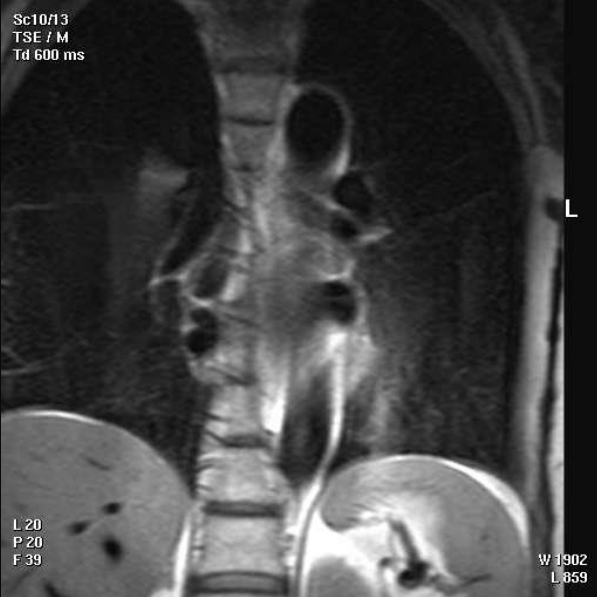
VORIGE SCAN

RECHTER ATRIUM	82
RECHTER VENTRIKEL	86
LINKER ATRIUM	93
LINKER VENTRIKEL	96
TRUNCUS PULMONALIS	91
ARTERIA PULMONALIS	92
AORTA ASCENDENS	102
ARCUS AORTAE	27
AORTA THORACICA	40
VENA CAVA SUPERIOR	34
VENA CAVA INFERIOR	36
VENA PULMONALIS	95



VORIGE SCAN

RECHTER ATRIUM	82
RECHTER VENTRIKEL	86
LINKER ATRIUM	93
LINKER VENTRIKEL	96
TRUNCUS PULMONALIS	91
ARTERIA PULMONALIS	92
AORTA ASCENDENS	102
ARCUS AORTAE	27
AORTA THORACICA	40
VENA CAVA SUPERIOR	34
VENA CAVA INFERIOR	36
VENA PULMONALIS	95



**VORIGE
SCAN**

RECHTER ATRIUM	82
RECHTER VENTRIKEL	86
LINKER ATRIUM	93
LINKER VENTRIKEL	96
TRUNCUS PULMONALIS	91
ARTERIA PULMONALIS	92
AORTA ASCENDENS	102
ARCUS AORTAE	27
AORTA THORACICA	40
VENA CAVA SUPERIOR	34
VENA CAVA INFERIOR	36
VENA PULMONALIS	95