

# Autonome Zenuwstelsel Schematisch Opgebouwd

Paul Gobée, dept. Anatomy & Embryology,  
LUMC

license CC BY NC SA



v2, oct 2022

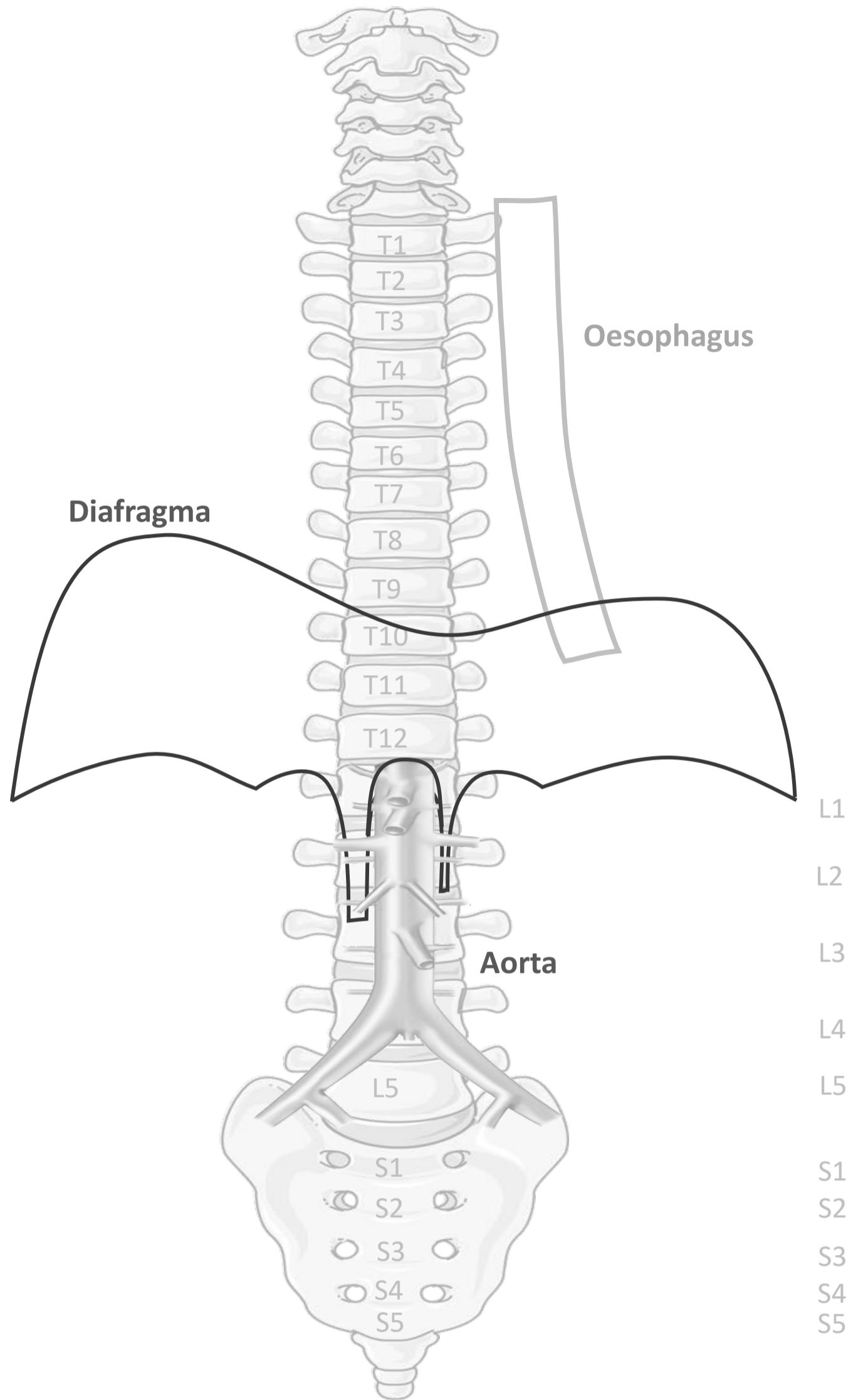
# Zenuwstelsel in 5 onderdelen en 3 verbindingen

## Onderdelen

1. Spinale zenuwen - **Somatisch**
2. Paravertebraal (truncus sympathicus)- **Sympathisch**
3. Prevertebraal/ preaortaal - **Sympathisch**
4. Nn. vagi - **Parasympathisch**
5. Sacraal - **Parasympathisch**

## Verbindingen

1. Rami communicans **Sympathisch**
2. Splanchnische zenuwen **Sympathisch**
3. Pelviene splanchnische zenuwen **Parasympathisch**



# Zenuwstelsel

## 5 onderdelen

### Onderdelen

#### Somatisch

1. Spinale zenuwen

#### Sympathisch

2. Paravertebraal (truncus sympathicus)
3. Prevertebraal/ preaortaal

#### Parasympathisch

4. Nn. vagi
5. Sacraal

# Zenuwstelsel

## 5 onderdelen

### Onderdelen

#### Somatisch

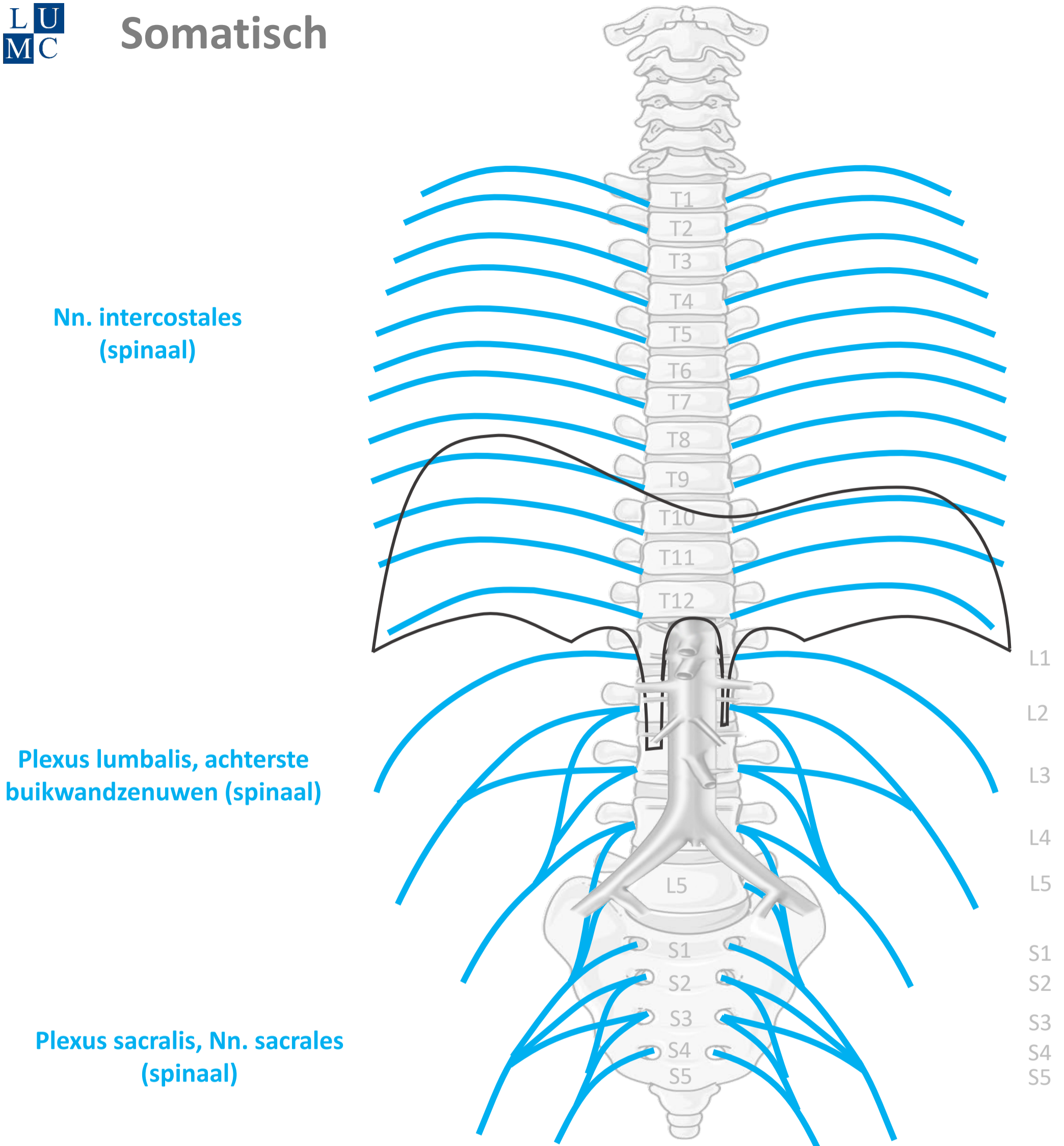
##### 1. Spinale zenuwen

#### Sympathisch

2. Paravertebraal (truncus sympathicus)
3. Prevertebraal/ preaortaal

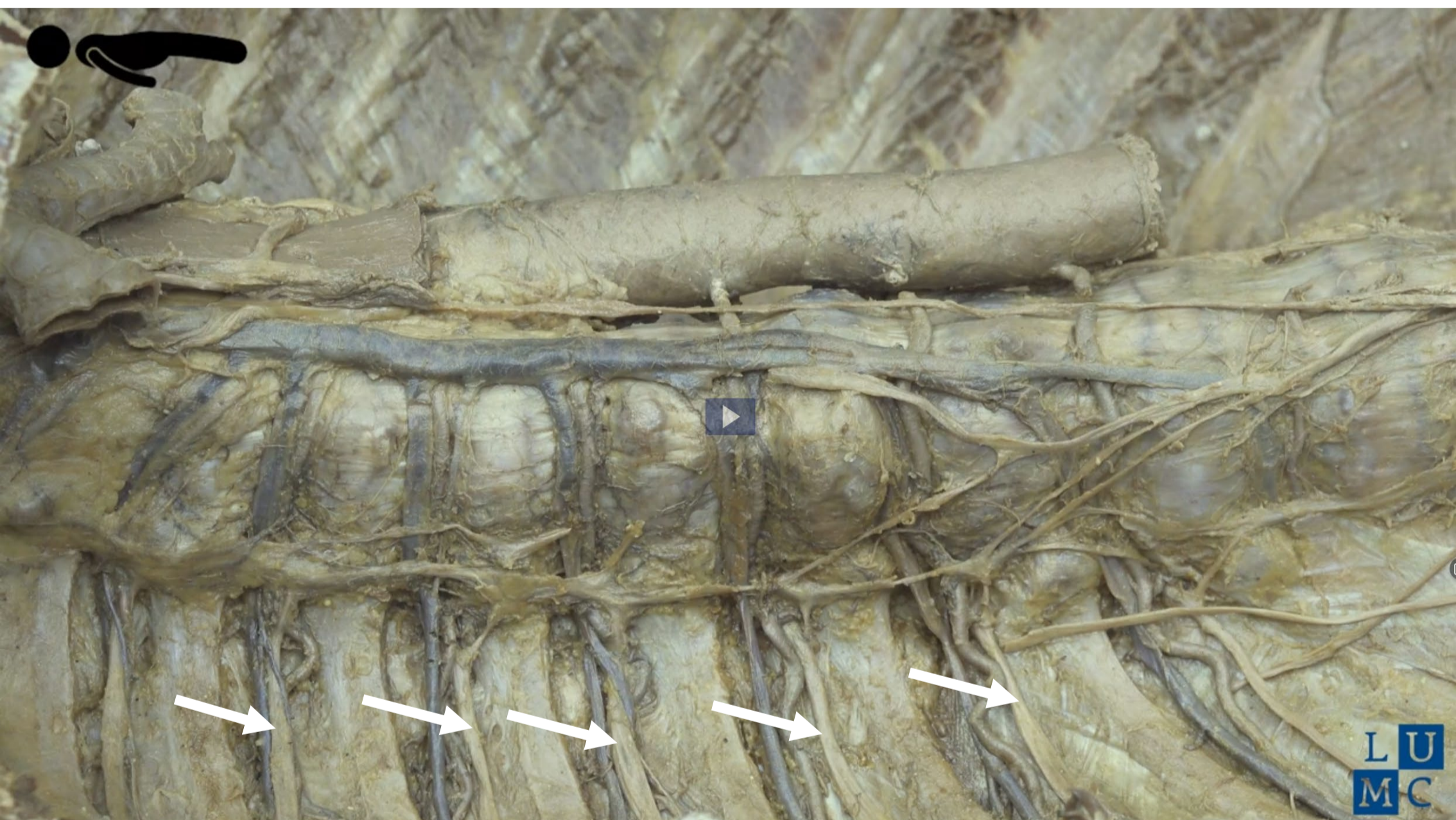
#### Parasympathisch

4. Nn. vagi
5. Sacraal





# Nn. intercostales



# Zenuwstelsel

## 5 onderdelen

### Onderdelen

#### Somatisch

1. Spinale zenuwen

#### Sympathisch

2. Paravertebraal (truncus sympathicus)
3. Prevertebraal/ preaortaal

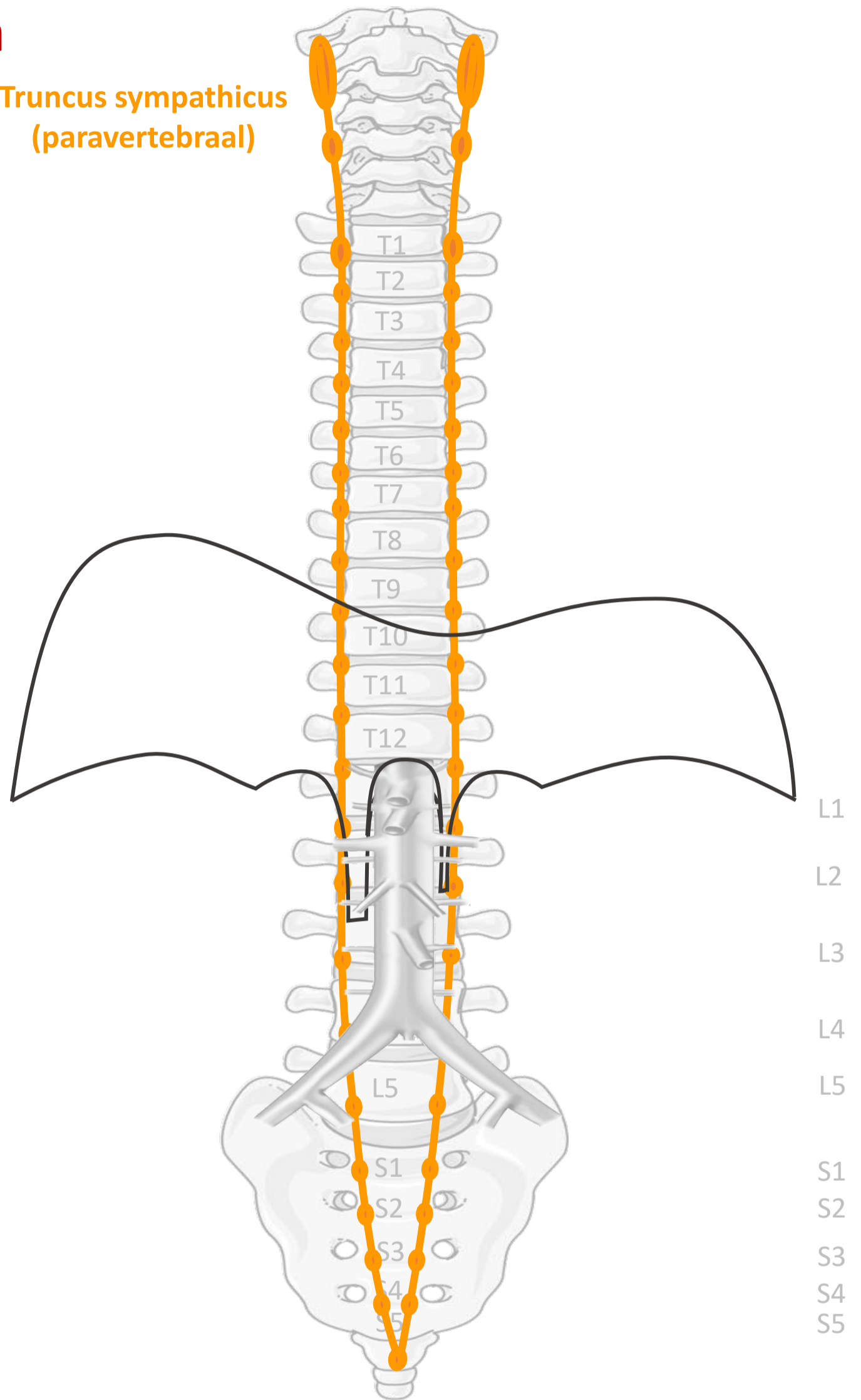
#### Parasympathisch

4. Nn. vagi
5. Sacraal



# Sympathisch

Truncus sympathicus  
(paravertebraal)



By Paul Gobée, dept. Anatomy & Embryology, LUMC license CC BY NC SA

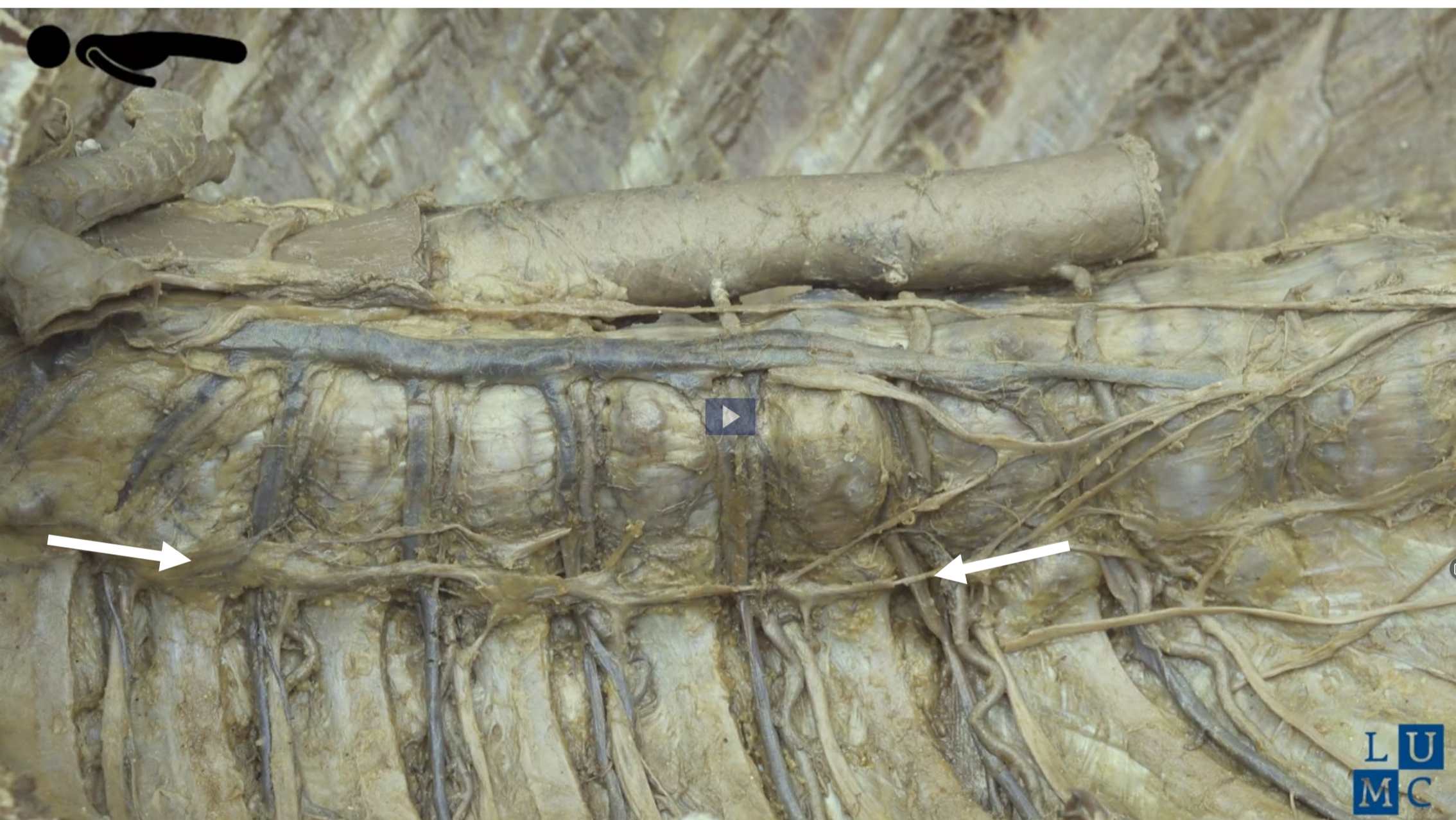
Bronnen: Gray's Anatomy 41<sup>st</sup> ed., Moore K et al, Clin. Oriented Anatomy, 8<sup>th</sup> ed.

"Servier - Drawing Vertebral column anterior view - no labels" by Servier Medical Art, license: CC BY

"Branches of the abdominal aorta - English labels" by Open Learning Initiative, license: CC BY-NC-SA



# Truncus sympathicus



# Zenuwstelsel

## 5 onderdelen

### Onderdelen

#### Somatisch

1. Spinale zenuwen

#### Sympathisch

2. Paravertebraal (truncus sympathicus)
3. Prevertebraal/ preaortaal

#### Parasympathisch

4. Nn. vagi
5. Sacraal



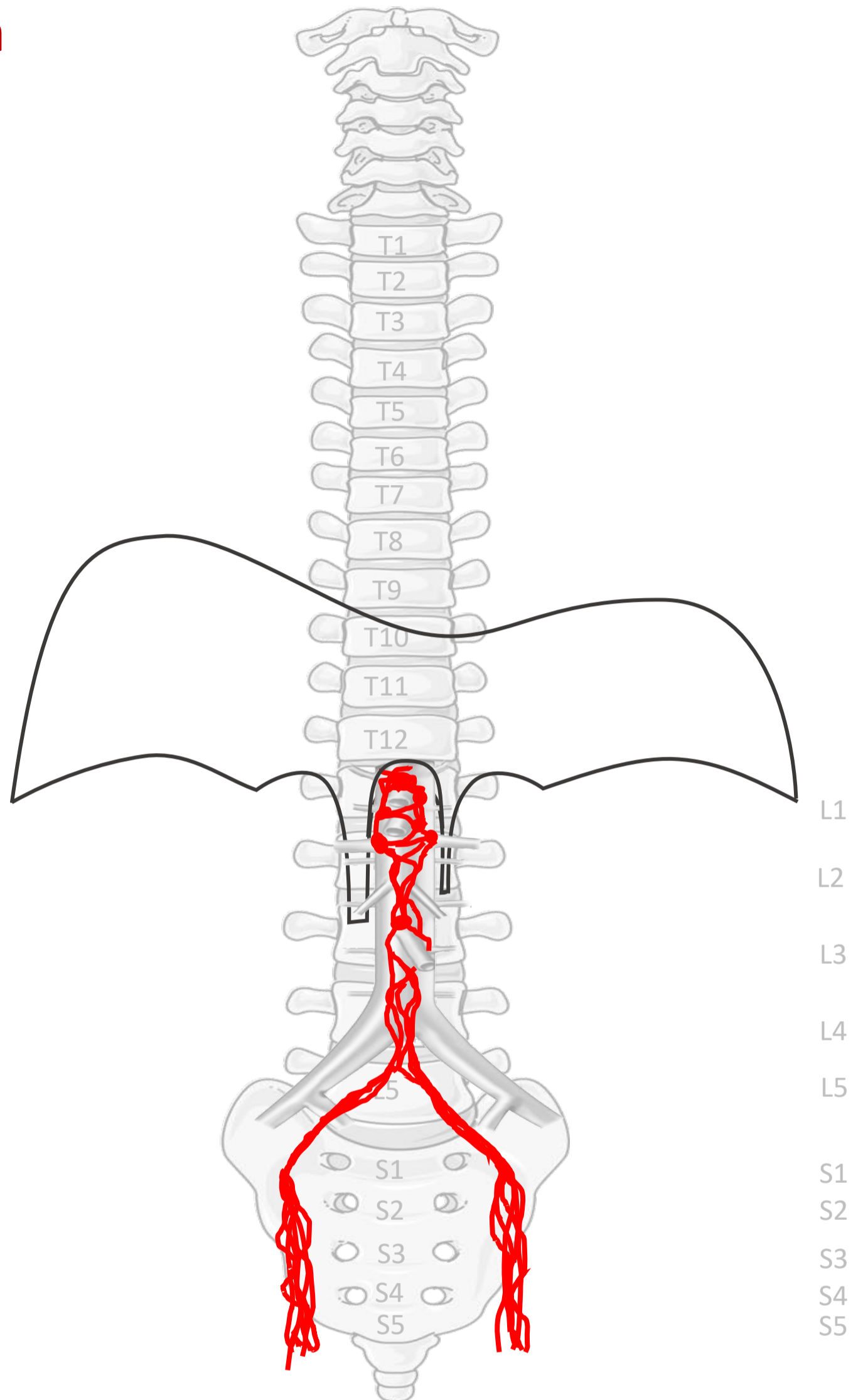
## Sympathisch

**Prevertebraal / preaortaal :**  
ganglion & plexus coeliacus,  
mesent. sup, aorticorenalis,  
intermesentericus, mesent. inf.

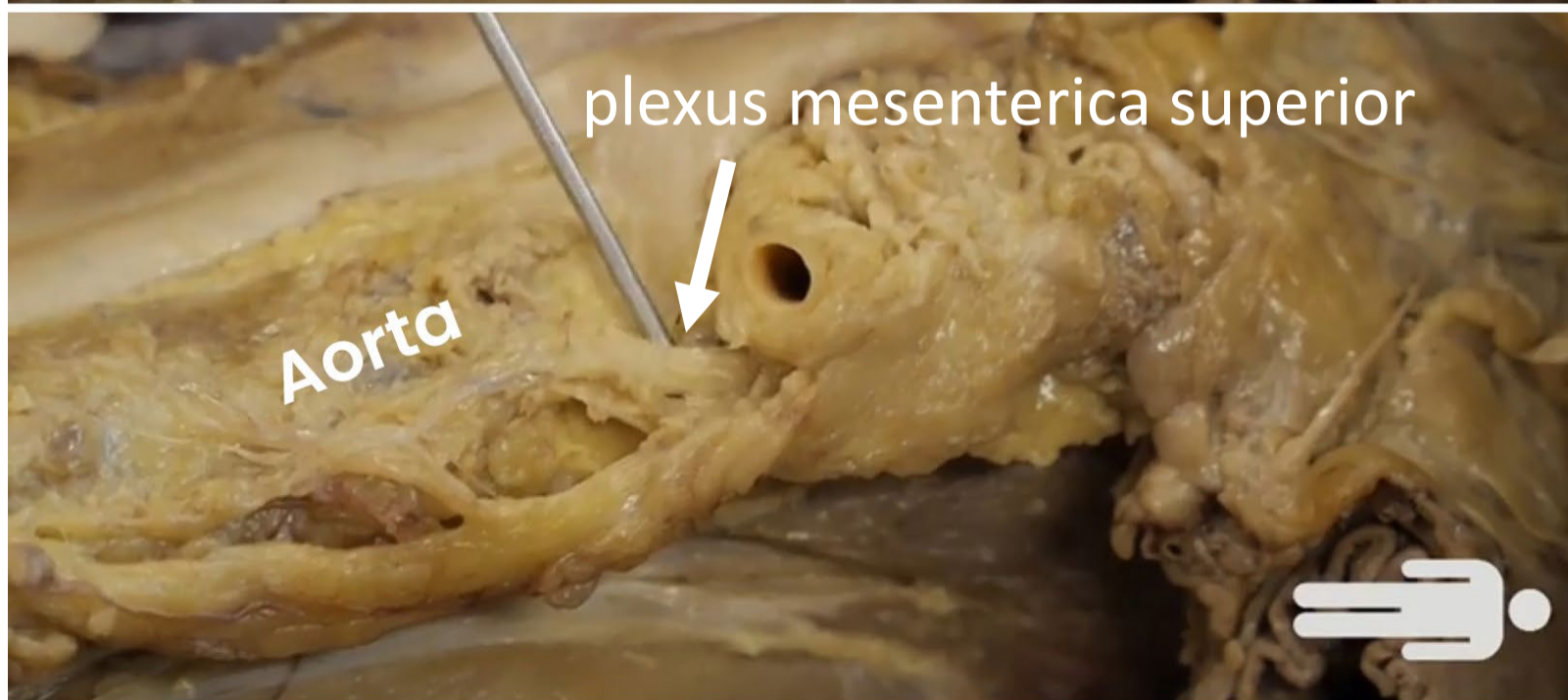
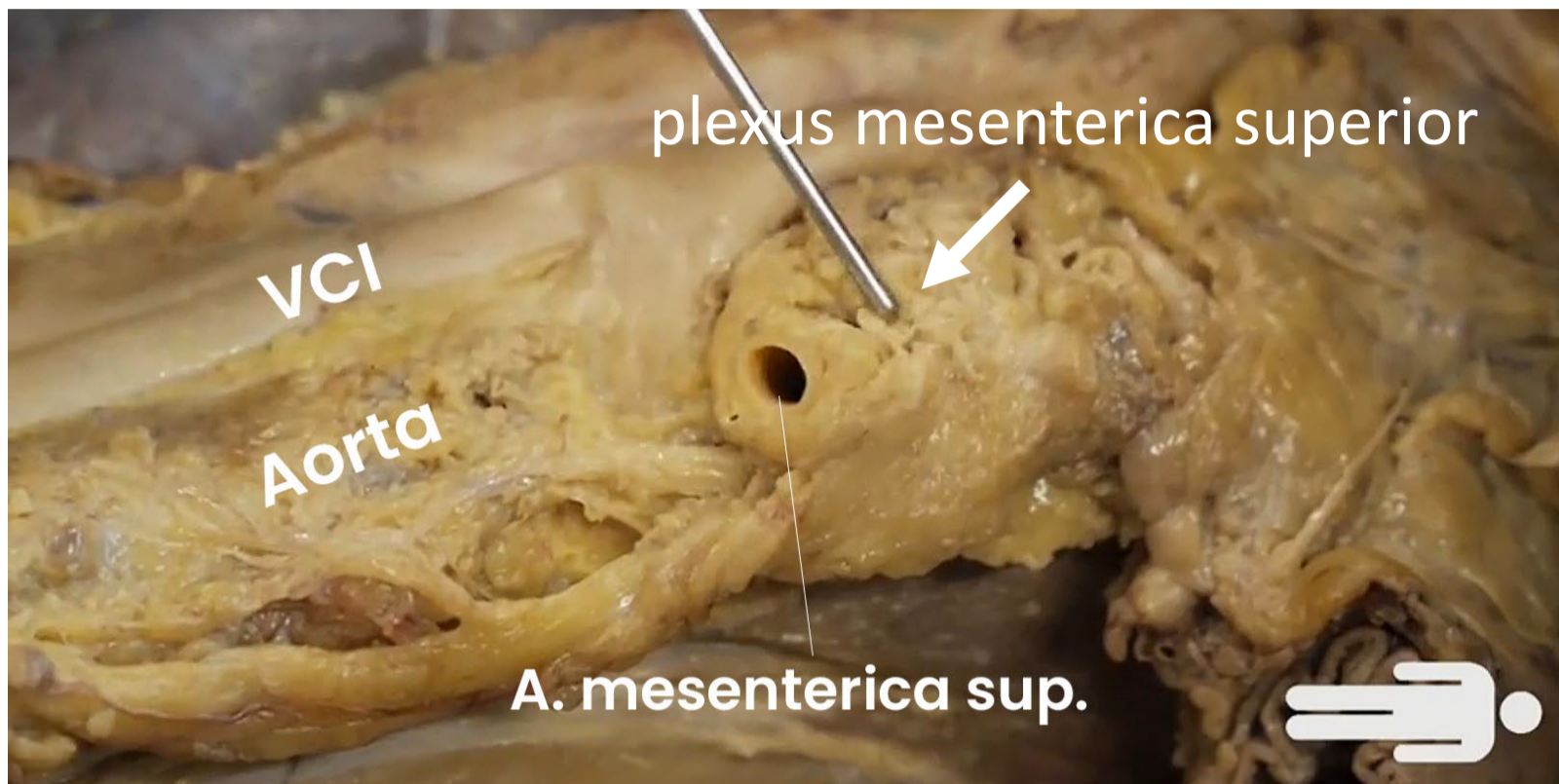
**Plexus hypogastr. sup.**

**N. hypogastricus**

**Plexus hypogastr. inf.**

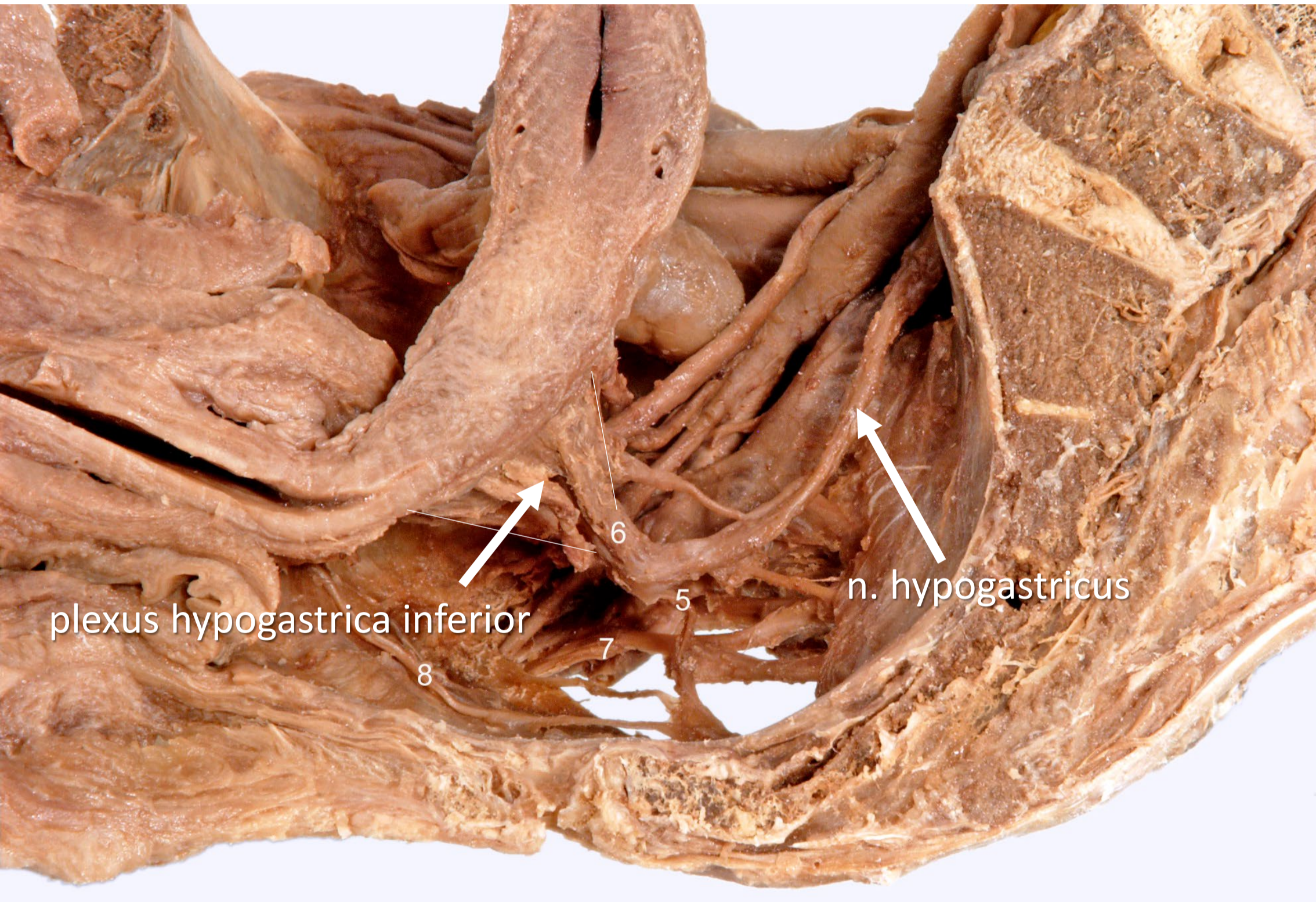


# Prevertebrale/ preaortale plexi & ganglia





# Prevertebrale/ preaortale plexi & ganglia



Dissection by Kees Maas MD PhD



"Leiden, Maas Photo 15 - Sagittal view of the female pelvic nerves (plastination specimen) - number labels" by Kees (C.P.) Maas, LUMC, Marco C. DeRuiter, LUMC and J. Lens, license: [CC BY-NC-SA](https://creativecommons.org/licenses/by-nc-sa/4.0/)

shot uit video , Leiden MOOC 6.4 - Video Anatomy on the Table: Innervation of the viscera – abdomen by Bas Boekestijn, dept. Anatomy & Embryology, LUMC license [CC BY NC SA](https://creativecommons.org/licenses/by-nc-sa/4.0/)  
<https://anatomytool.org/content/leiden-mooc-64-video-anatomy-table-innervation-viscera-abdomen>





# Zenuwstelsel

## 5 onderdelen

### Onderdelen

#### Somatisch

1. Spinale zenuwen

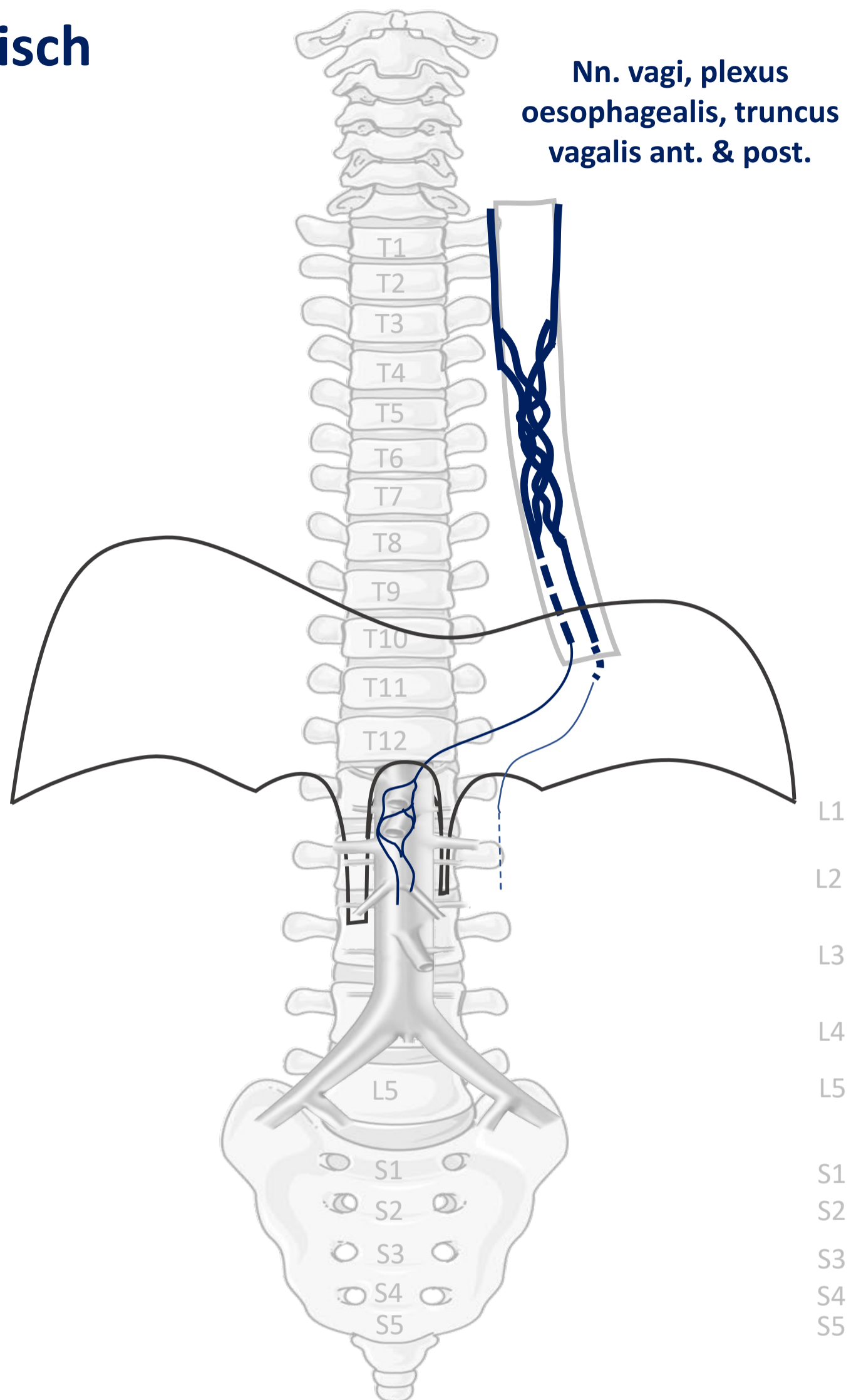
#### Sympathisch

2. Paravertebraal (truncus sympathicus)
3. Prevertebraal/ preaortaal

#### Parasympathisch

4. Nn. vagi
5. Sacraal

# Parasympathisch



# Zenuwstelsel

## 5 onderdelen

### Onderdelen

#### Somatisch

1. Spinale zenuwen

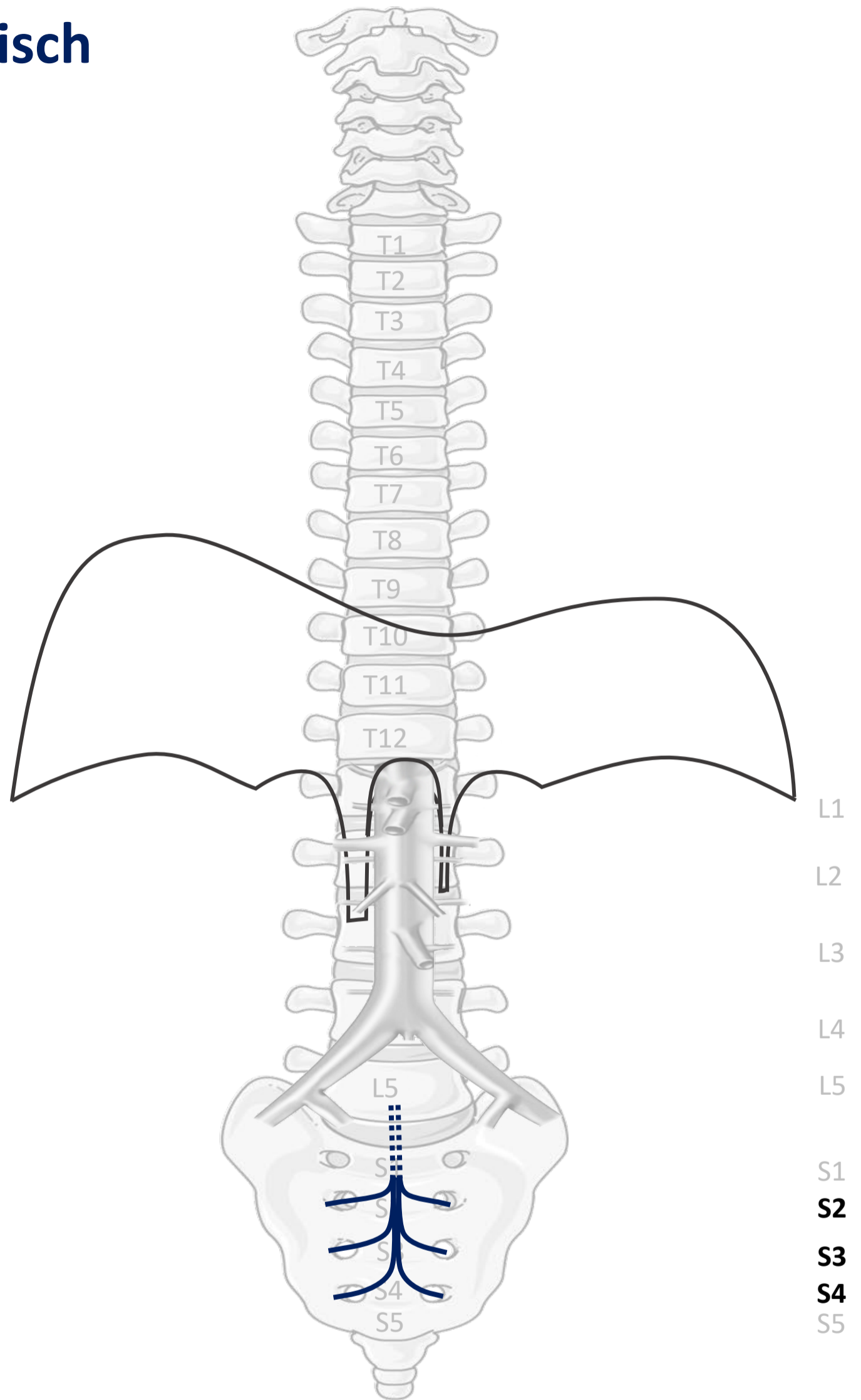
#### Sympathisch

2. Paravertebraal (truncus sympathicus)
3. Prevertebraal/ preaortaal

#### Parasympathisch

4. Nn. vagi
5. Sacraal (S2-S4)

# Parasympathisch



Sacrale parasymp. outflow  
→ S2-S4



# 3 verbindingen

## Verbindingen

1. Rami communicans (*sympathisch*)
2. Splanchnische zenuwen (*sympathisch*)
3. Pelviene splanchnische zenuwen (*parasympathisch*)

# 3 verbindingen

## Verbindingen

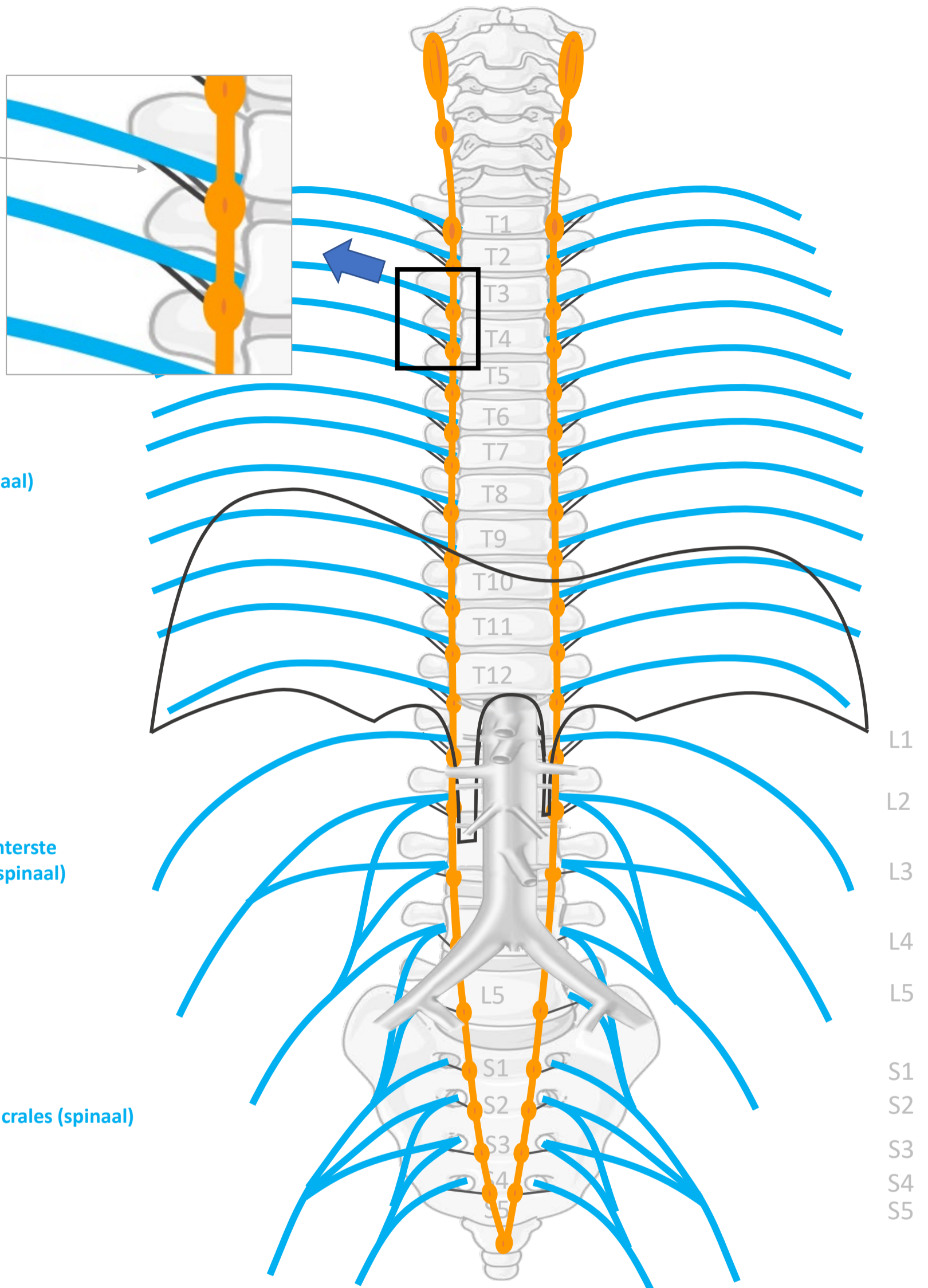
1. Rami communicans (*sympathisch*)
2. Splanchnische zenuwen (*sympathisch*)
3. Pelviene splanchnische zenuwen (*parasympathisch*)

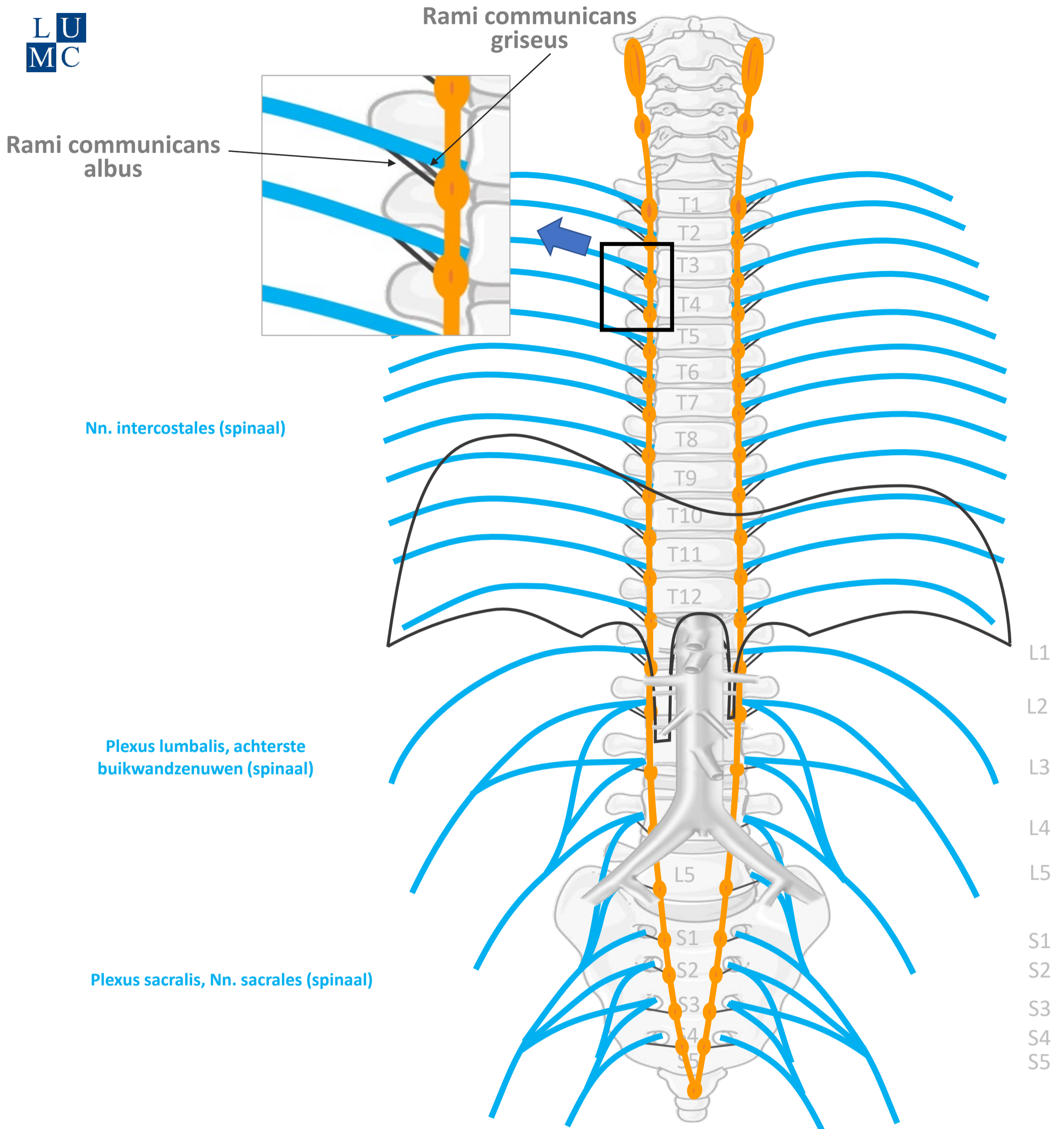
Rami communicans  
verbinden  
spinale zenuwen  
met  
Truncus sympathicus  
(paravertebraal)

Nn. intercostales (spinaal)

Plexus lumbalis, achterste  
buiwandzenuwen (spinaal)

Plexus sacralis, Nn. sacrales (spinaal)





By Paul Gobée, dept. Anatomy & Embryology, LUMC license CC BY NC SA

Bronnen: Gray's Anatomy 41<sup>st</sup> ed., Moore K et al, Clin. Oriented Anatomy, 8<sup>th</sup> ed.

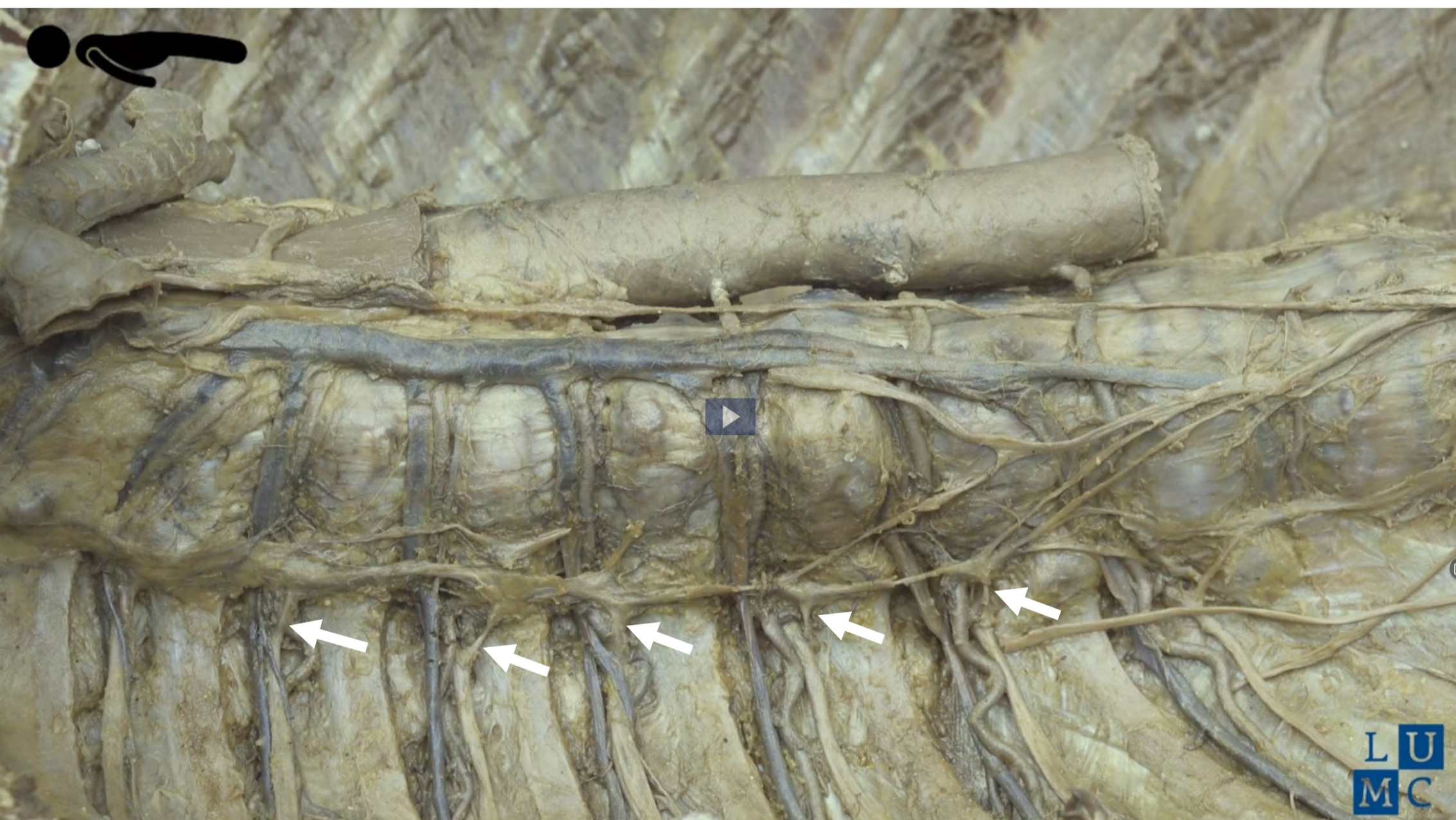
"Servier - Drawing Vertebral column anterior view - no labels" by Servier Medical Art, license: CC BY

"Branches of the abdominal aorta - English labels" by Open Learning Initiative, license: CC BY-NC-SA





# Rami communicans





# 3 verbindingen

## Verbindingen

1. Rami communicans (*sympathisch*)
2. Splanchnische zenuwen (*sympathisch*)
3. Pelviene splanchnische zenuwen (*parasympathisch*)

# Splanchnische zenuwen (sympathisch)

Voorzien inwendige organen (*splanchn-*) sympathisch:

1. **Cardiopulmonale** splanchnische zenuwen  
(komen van truncus sympathicus ~C4 – T5)  
voorzien hart, longen, oesophagus
2. **Thoracale** splanchnische zenuwen  
(komen van truncus sympathicus T5-T12)  
voorzien *buikorganen*:  
lever, milt, pancreas, nieren,  
maag t/m colon transversum (*voordarm en  
middendarm*)
3. **Lumbale** splanchnische zenuwen  
(komen van truncus sympathicus L1-~L3)  
voorzien *buik- en bekkenorganen*:  
colon descendens t/m rectum (*einddarm*),  
blaas, uterus, ovariae, prostaat

# Splanchnische zenuwen (sympathisch)

Voorzien inwendige organen (*splanchn-*) sympathisch:

- 1. Cardiopulmonale splanchnische zenuwen**  
(komen van truncus sympathicus ~C4 – T5)  
naar hart, longen, oesophagus
- 2. Thoracale splanchnische zenuwen**  
(komen van truncus sympathicus T5-T12)  
naar **prevertebrale / preaortale plexi/ ganglia**

voorzien *buikorganen*:

lever, milt, pancreas, nieren,  
maag t/m colon transversum (*voordarm en  
middendarm*)

- 3. Lumbale splanchnische zenuwen**  
(komen van truncus sympathicus L1-~L3)  
naar **prevertebrale / preaortale plexi/ ganglia**

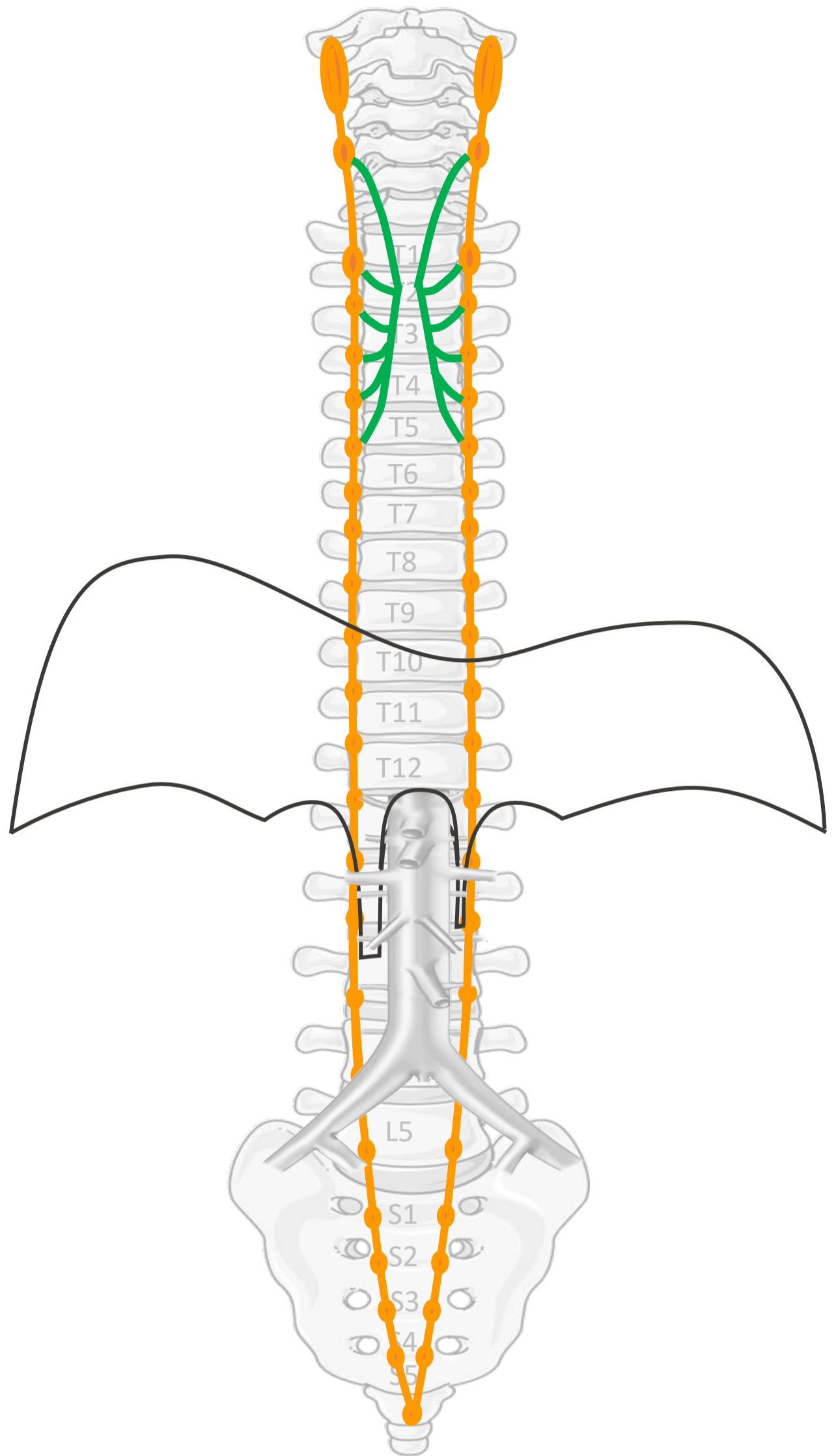
voorzien *buik- en bekkenorganen*:

colon descendens t/m rectum (*einddarm*),  
blaas, uterus, ovariae, prostaat



## Cardiopulmonale splanchnische zenuwen

van  
**Truncus sympathicus (~C4 – T5)**  
(paravertebraal)  
naar  
hart, longen, oesophagus



## Thoracale splanchnische zenuwen:

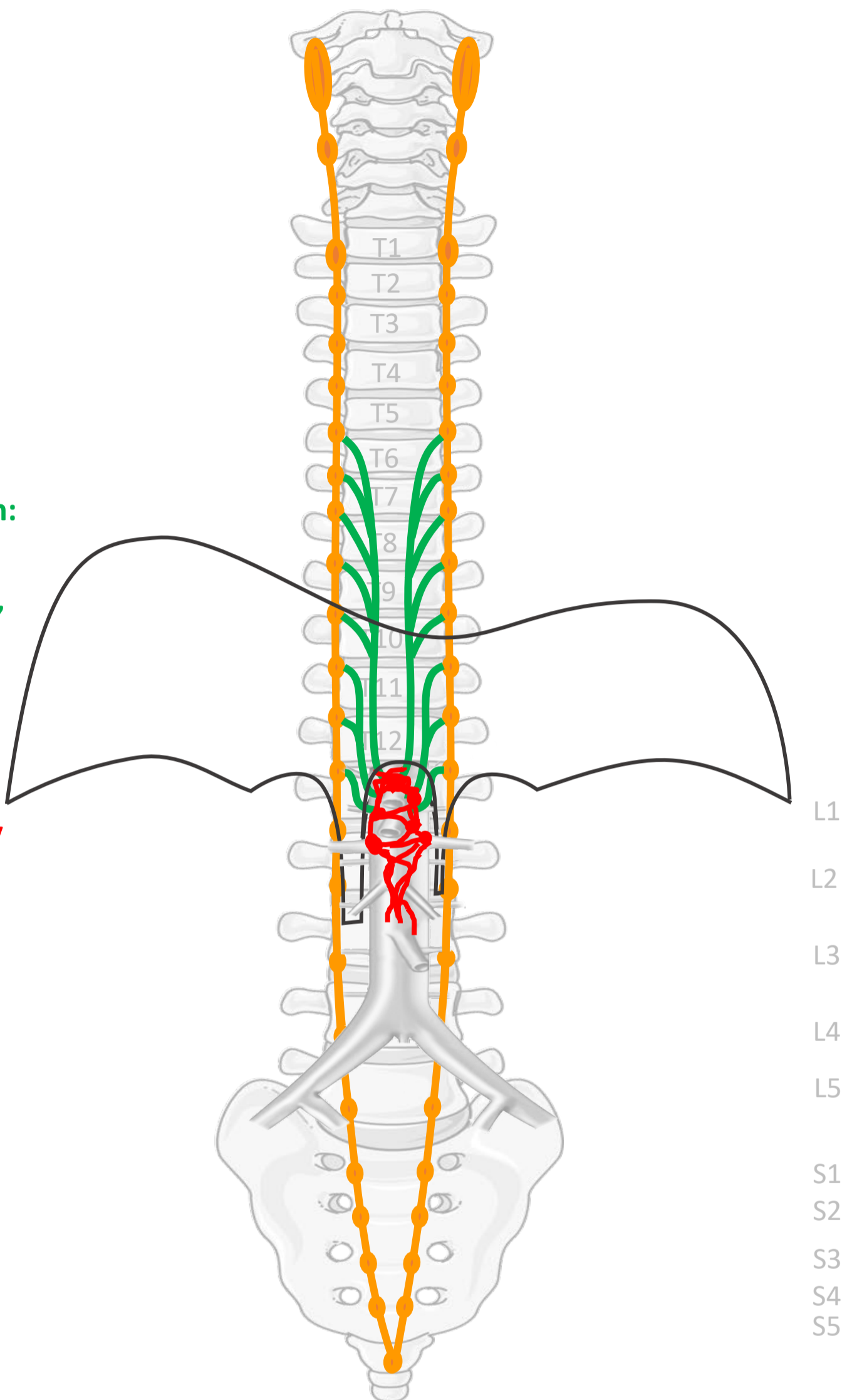
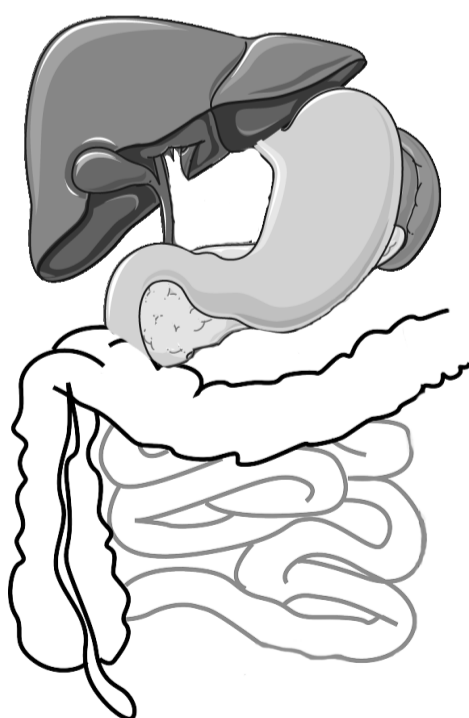
**N. splanchnicus major (T5-T9),  
N. splanchnicus minor (T10-T11),  
N. splanchnicus imus (T12)**

van  
**Truncus sympathicus (T5-T12)  
(paravertebraal)**

naar  
**prevertebrale / preaortale plexi/  
ganglia:**

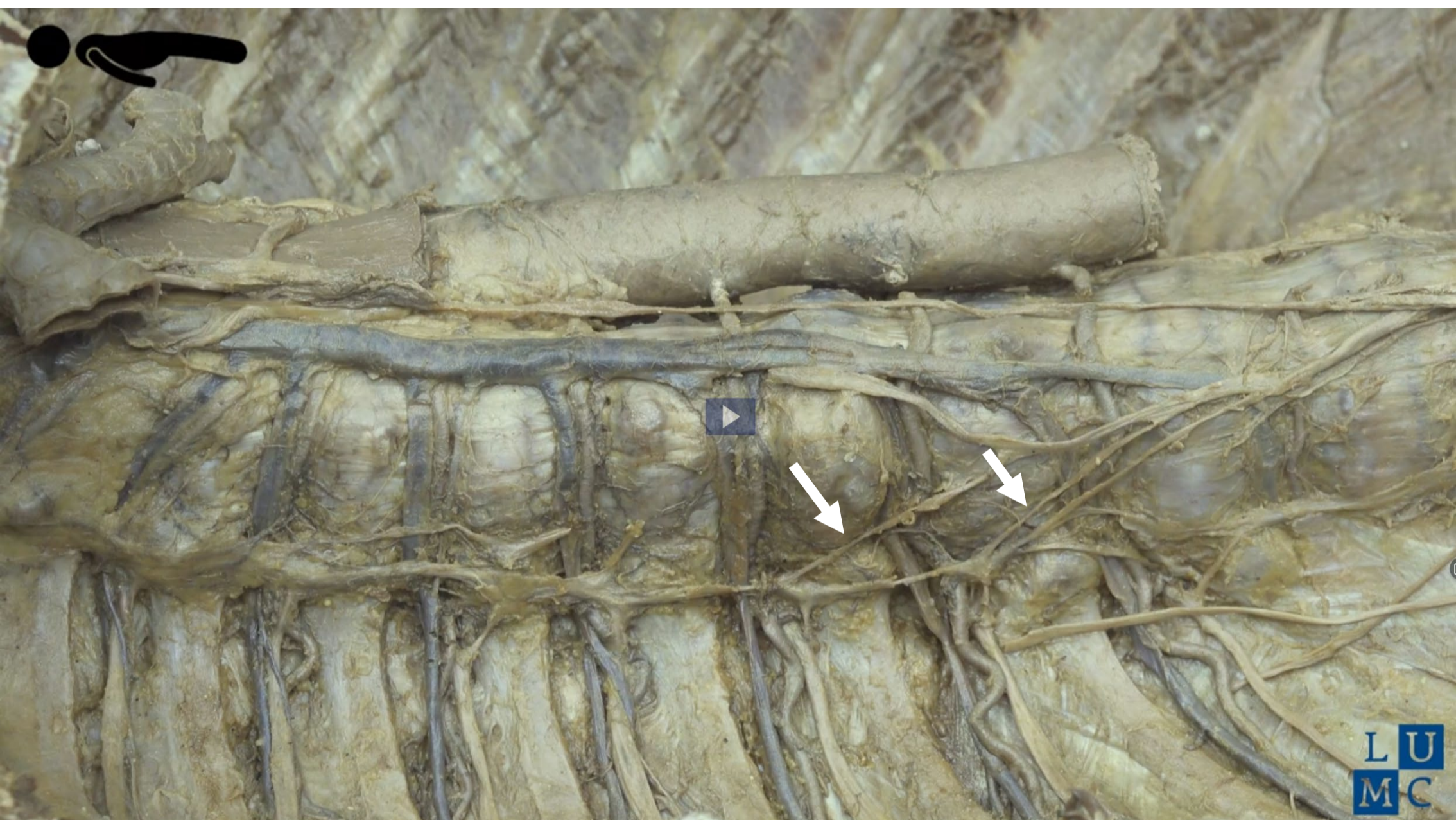
**Ganglion & plexus coeliacus,  
mesent. sup, aorticorenalis,  
intermesentericus, mesent. inf.**

Prikkels daarna verder naar

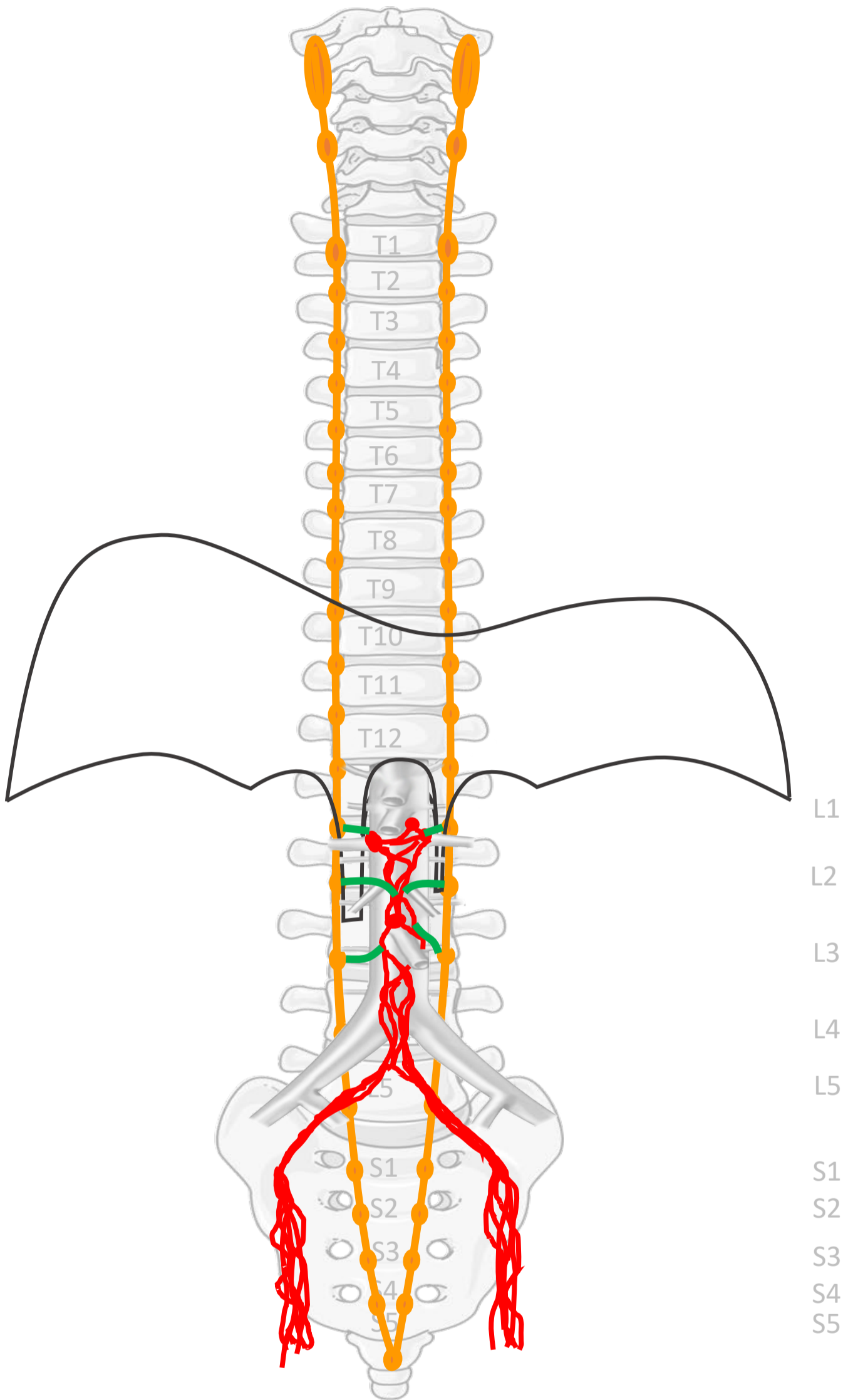




# Thoracale splanchnische zenuwen N. splanchnicus major, minor, imus







## Lumbale splanchnische zenuwen

van  
**Truncus sympathicus (L1 - ~L3)**  
(paravertebraal)

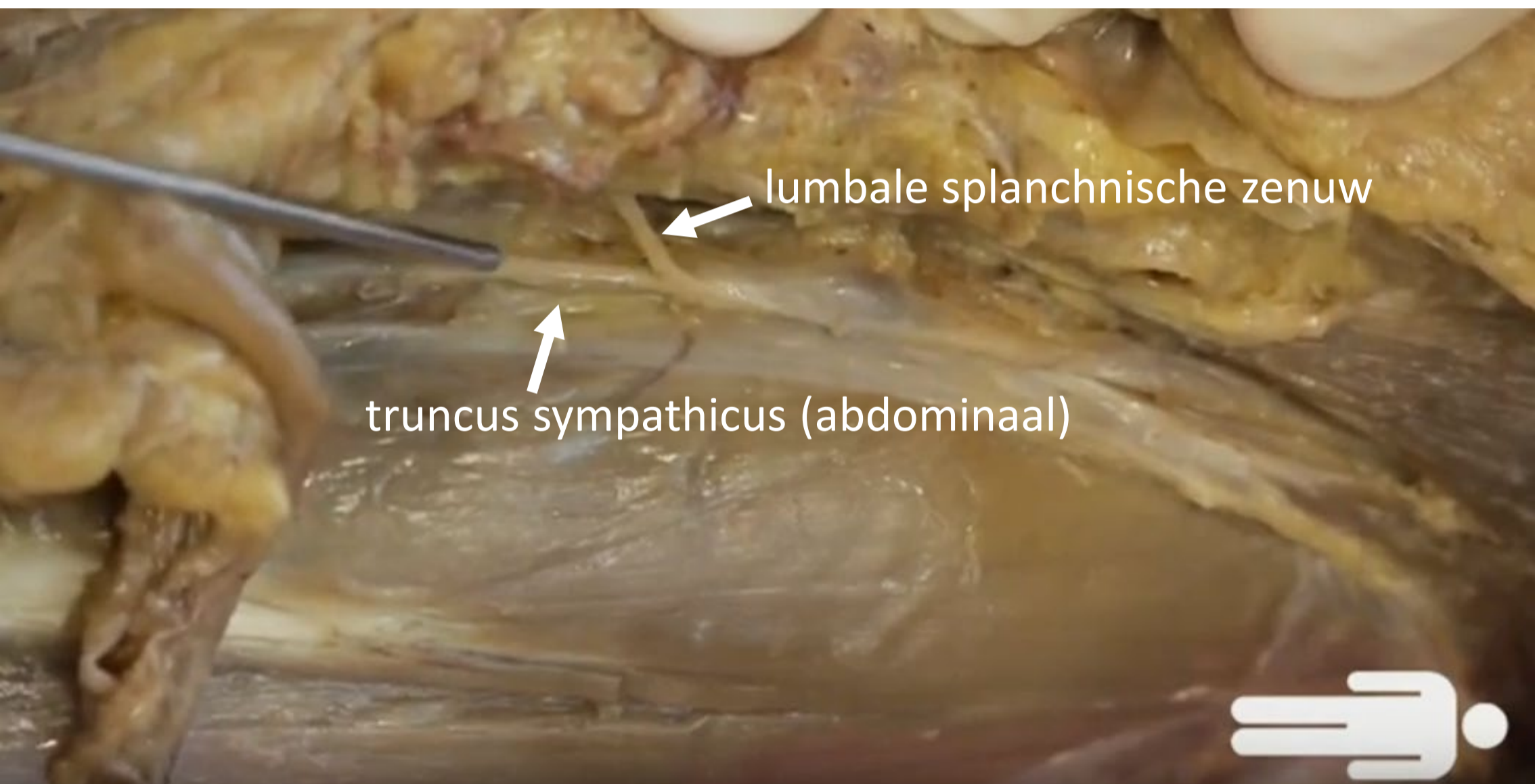
naar  
**prevertebrale / preaortale plexi/ ganglia:**

Plexus intermesentericus,  
mesent. inf.,  
plexus hypogastricus sup. , n.  
hypogastricus, plexus  
hypogastricus inf.

Prikkels daarna verder naar



# Lumbale splanchnische zenuwen



# 3 verbindingen

## Verbindingen

1. Rami communicans (*sympathisch*)
2. Splanchnische zenuwen (*sympathisch*)
3. Pelviene splanchnische zenuwen (*parasympathisch*)



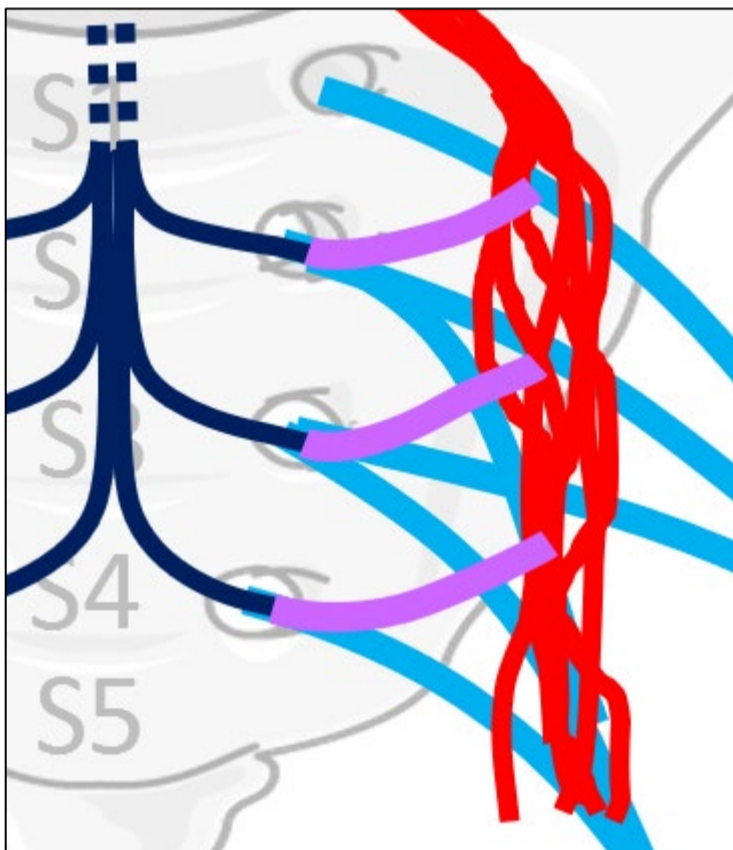
# Pelviene splanchnische zenuwen (parasymphathisch)

Verbinden

**Sacrale parasymphathische outflow (S2-S4)**

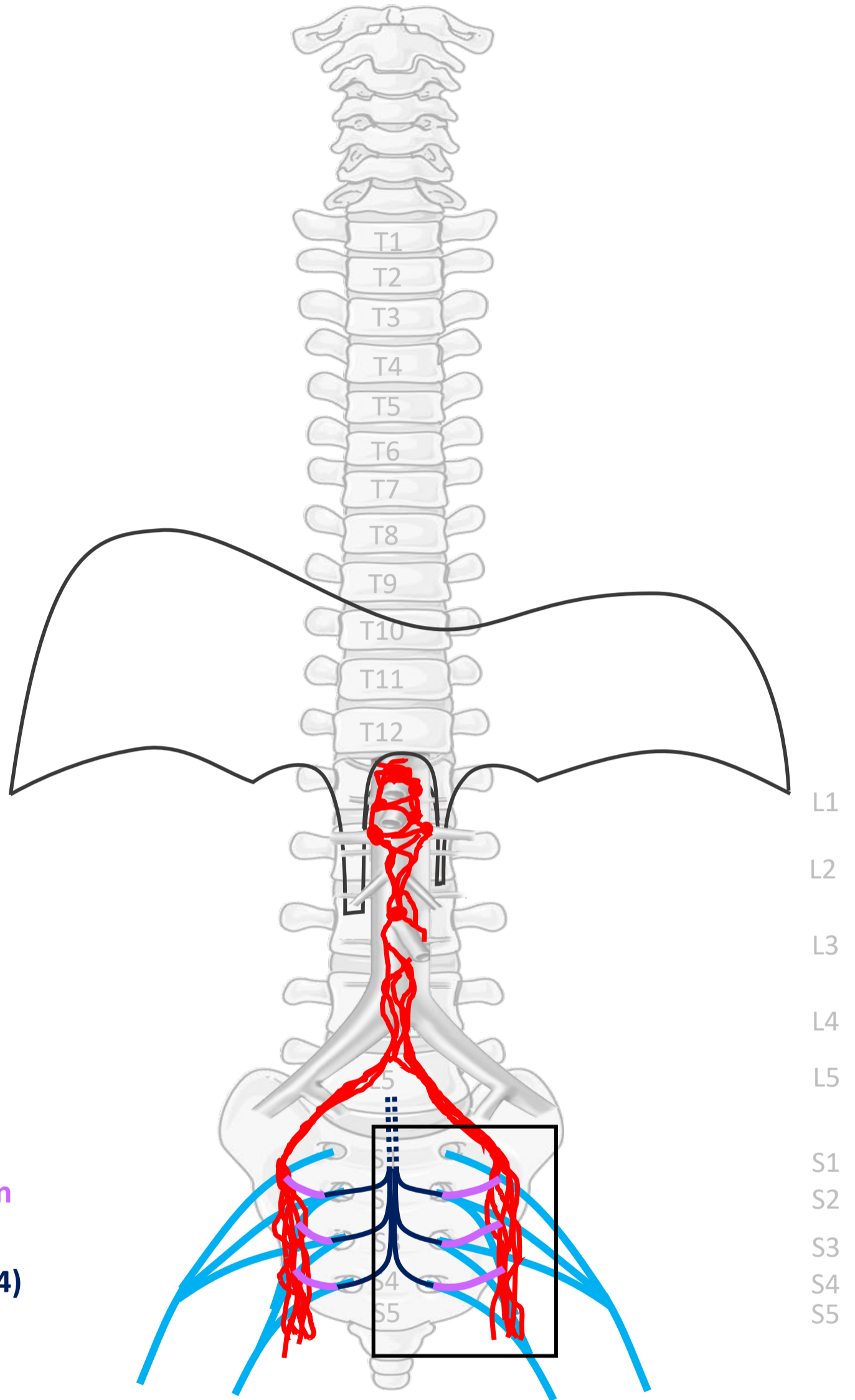
met

**Plexus hypogastricus inferior**



## Pelviene splanchnische zenuwen

Verbinden  
Sacrale parasymp. outflow (S2-S4)  
met  
Plexus hypogastr. inf.



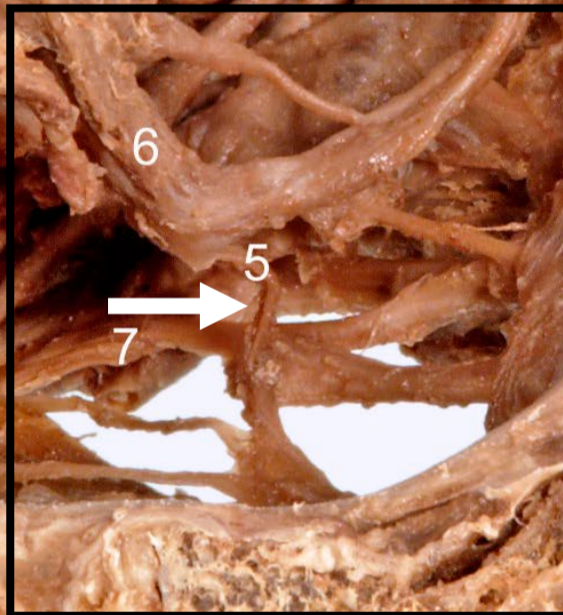
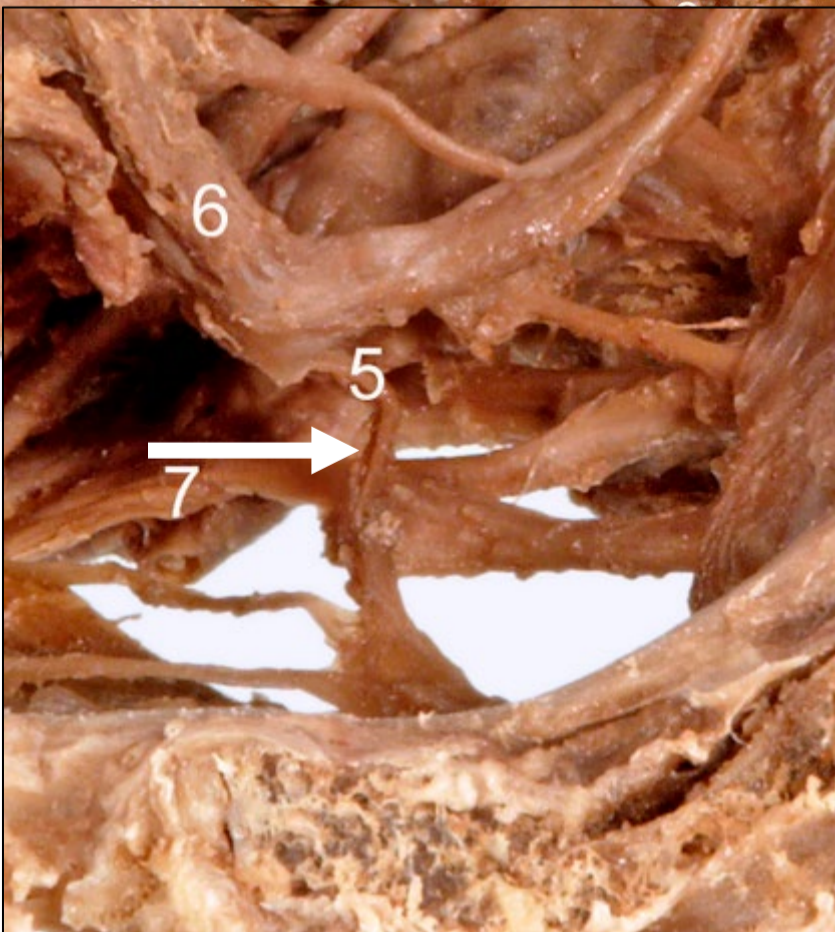
Plexus sacralis, Nn. sacrales (spinaal)



# Pelviene splanchnische zenuw



pelviene splanchnische zenuw



Dissection by Kees Maas MD PhD



"Leiden, Maas Photo 15 - Sagittal view of the female pelvic nerves (plastination specimen) - number labels" by Kees (C.P.) Maas, LUMC, Marco C. DeRuiter, LUMC and J. Lens, license: [CC BY-NC-SA](https://creativecommons.org/licenses/by-nc-sa/4.0/)

shot uit video , Leiden MOOC 6.4 - Video Anatomy on the Table: Innervation of the viscera – abdomen by Bas Boekestijn, dept. Anatomy & Embryology, LUMC license [CC BY NC SA](https://creativecommons.org/licenses/by-nc-sa/4.0/)  
<https://anatomytool.org/content/leiden-mooc-64-video-anatomy-table-innervation-viscera-abdomen>





# Zenuwstelsel in 5 onderdelen en 3 verbindingen

## Onderdelen

1. Spinale zenuwen - **Somatisch**
2. Paravertebraal (truncus sympathicus)- **Sympathisch**
3. Prevertebraal/ preaortaal - **Sympathisch**
4. Nn. vagi - **Parasympathisch**
5. Sacraal - **Parasympathisch**

## Verbindingen

1. Rami communicans (spinaal – **truncus symp.**)
2. Splanchnische zenuwen (**truncus symp. – preaortaal**)
3. Pelviene splanchnische zenuwen  
(**parasymp S2-S4 – plexus hypogastricus inferior**)

Truncus sympathicus  
(paravertebraal)

Nn. vagi, plexus oesophagealis,  
truncus vagalis ant. & post.

Cardiopulmonale splanchnische  
zenuwen

Nn. intercostales (spinaal)

Rami communicans

Thoracale splanchnische zenuwen:  
N. splanchnicus major, minor, imus

Prevertebraal / preaortaal:  
ganglion & plexus coeliacus, mesent. sup,  
aorticorenalis, intermesentericus, mesent. inf.

Plexus lumbalis, achterste  
buikwandzenuwen (spinaal)  
Lumbale splanchnische zenuwen

Plexus hypogastr. sup.

N. hypogastricus

Plexus sacralis, Nn. sacrales (spinaal)

Pelviene splanchnische zenuwen

Plexus hypogastr. inf.

Sacrale parasymp. outflow

