

Pelvis plastination specimens by Kees Maas

A series of photographs of pelvis plastination specimens created for training courses for gynaecologists and dissected by:

Dr. Kees (C.P.) Maas, MD, PhD †

Prof. Marco C. DeRuiter, PhD, professor of Clinical and Experimental Anatomy

Photo's: Jan Lens, medical photographer

This presentation file: O. Paul Gobée, MD, senior lecturer of anatomy

These specimens and photographs are now also being used for anatomy labs for medical students.

This presentation is dedicated to the memory of doctor Kees Maas, who was strongly committed to the improval of nerve sparing oncological surgery in the pelvis.

<https://www.medischcontact.nl/nieuws/laatste-nieuws/artikel/alles-wat-ik-nu-nog-doe-moet-zin-hebben.htm>



*Dept. Anatomy & Embryology
Leiden University Medical Center,
Leiden, Netherlands*

Corrections and changes

19 Jan. 2023 Corrected positioning label 'U' on plates 7 and 8

19 Jan. 2023 Added plates 34 and 35 re. specimen 66



1

Spec. 68

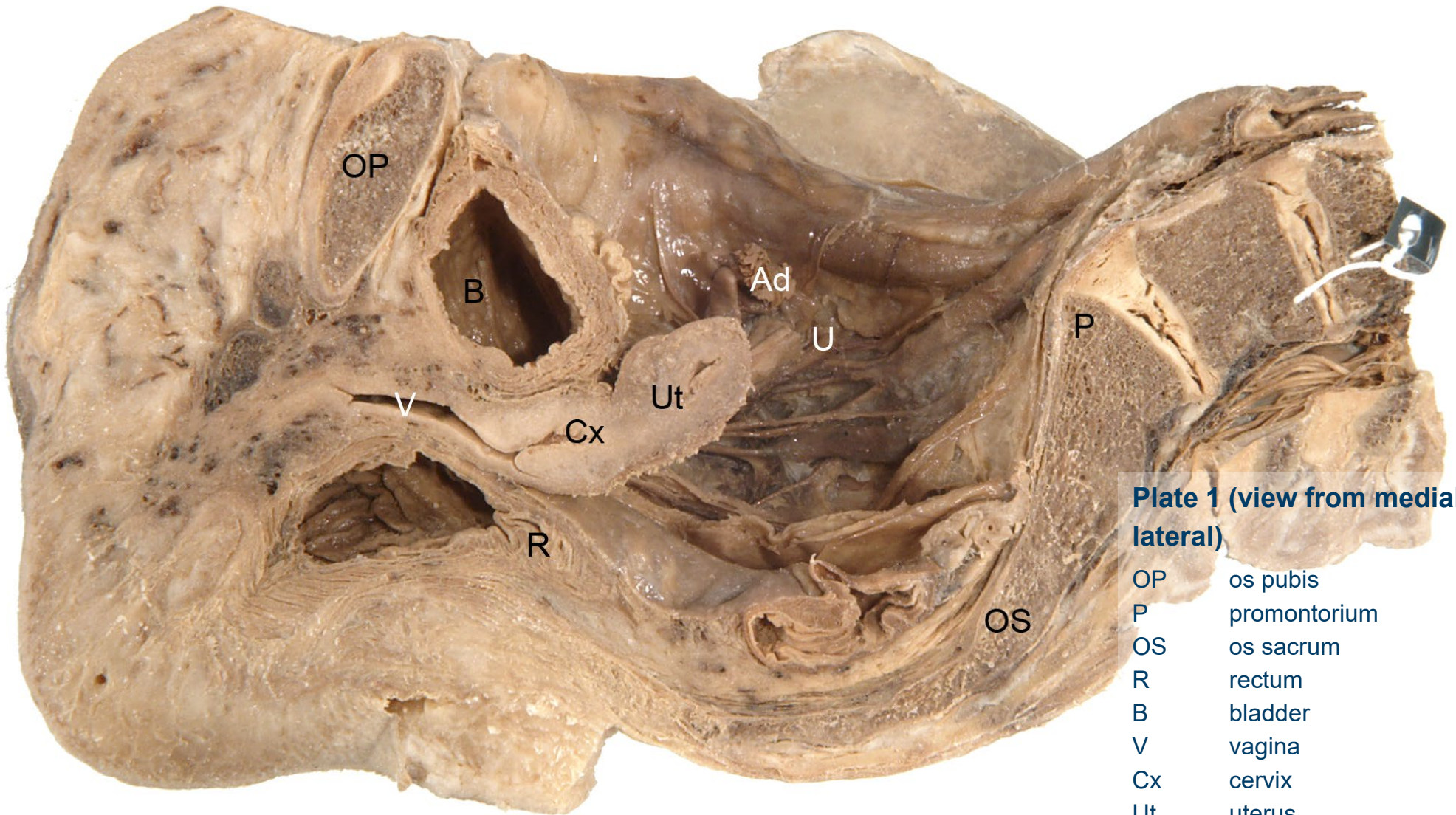


Plate 1 (view from medial to lateral)

- OP os pubis
- P promontorium
- OS os sacrum
- R rectum
- B bladder
- V vagina
- Cx cervix
- Ut uterus
- U ureter
- Ad adnex



2

5

4

1

2

3

- Plate 2 (detail of 1)**
- 1. nervus hypogastricus
 - 2. plexus hypogastricus inferior/
(plexus pelvicus)
 - 3. lig. rectouterinum (sacrouterina)
 - 4. arteria iliaca interna
 - 5. arteria iliaca externa



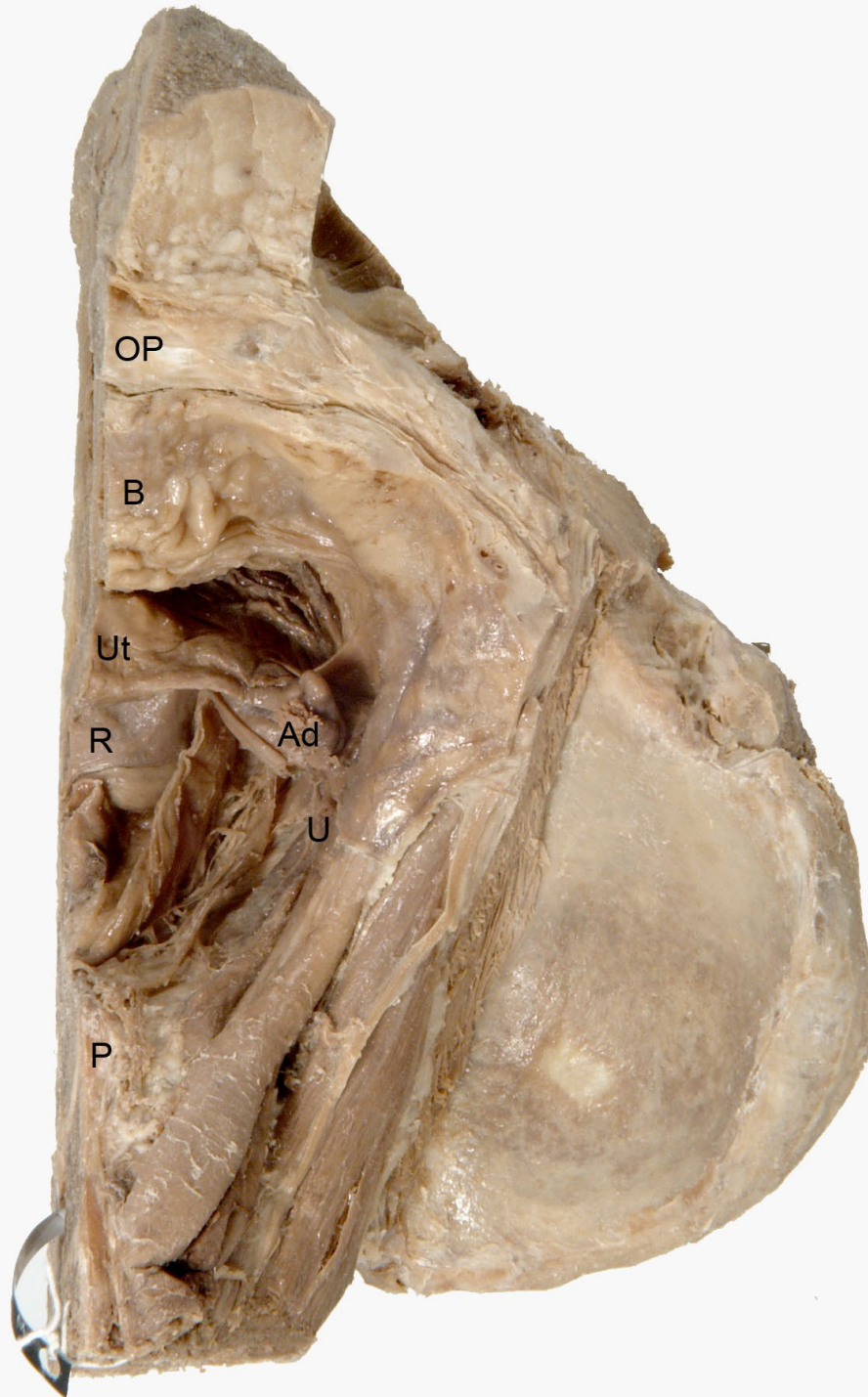


Plate 3 (view from superior)

OP	os pubis
P	promontorium
R	rectum
B	bladder
Ut	uterus
U	ureter
Ad	adnex





Plate 4 (detail of 3)

U ureter

1. nervus hypogastricus
2. plexus hypogastricus inferior/ (plexus pelvicus)
3. lig. rectouterinum (sacrouterina)
4. arteria iliaca interna
5. arteria iliaca externa
6. arteria and vena uterina





Plate 5 (detail of 3)

U ureter

1. nervus hypogastricus
2. plexus hypogastricus inferior/ (plexus pelvicus)
3. lig. rectouterinum (sacrouterina)
4. arteria iliaca interna
5. arteria iliaca externa
6. arteria and vena uterina
7. plexus pelvicus, pars vesico-uretralis





Plate 6 (view from superior)

OP	os pubis
P	promontorium
OS	os sacrum
R	rectum
B	bladder
V	vagina
Cx	cervix
Ut	uterus
U	ureter
Ad	adnex

1. musculus psoas major
2. nervus femoralis
3. lig. inguinale
4. arteria femoralis





Plate 7 (detail of 6)

- U ureter
- 5. arteria iliaca communis
- 6. arteria iliaca interna
- 7. arteria iliaca externa
- 8. a./v. circumflexa ilium profunda
- 9. arteria epigastrica inferior
- 10. arteria umbilicalis
- 11. arteria obturatoria
- 12. arteria vesicalis superior (not labelled)
- 13. arteria uterina



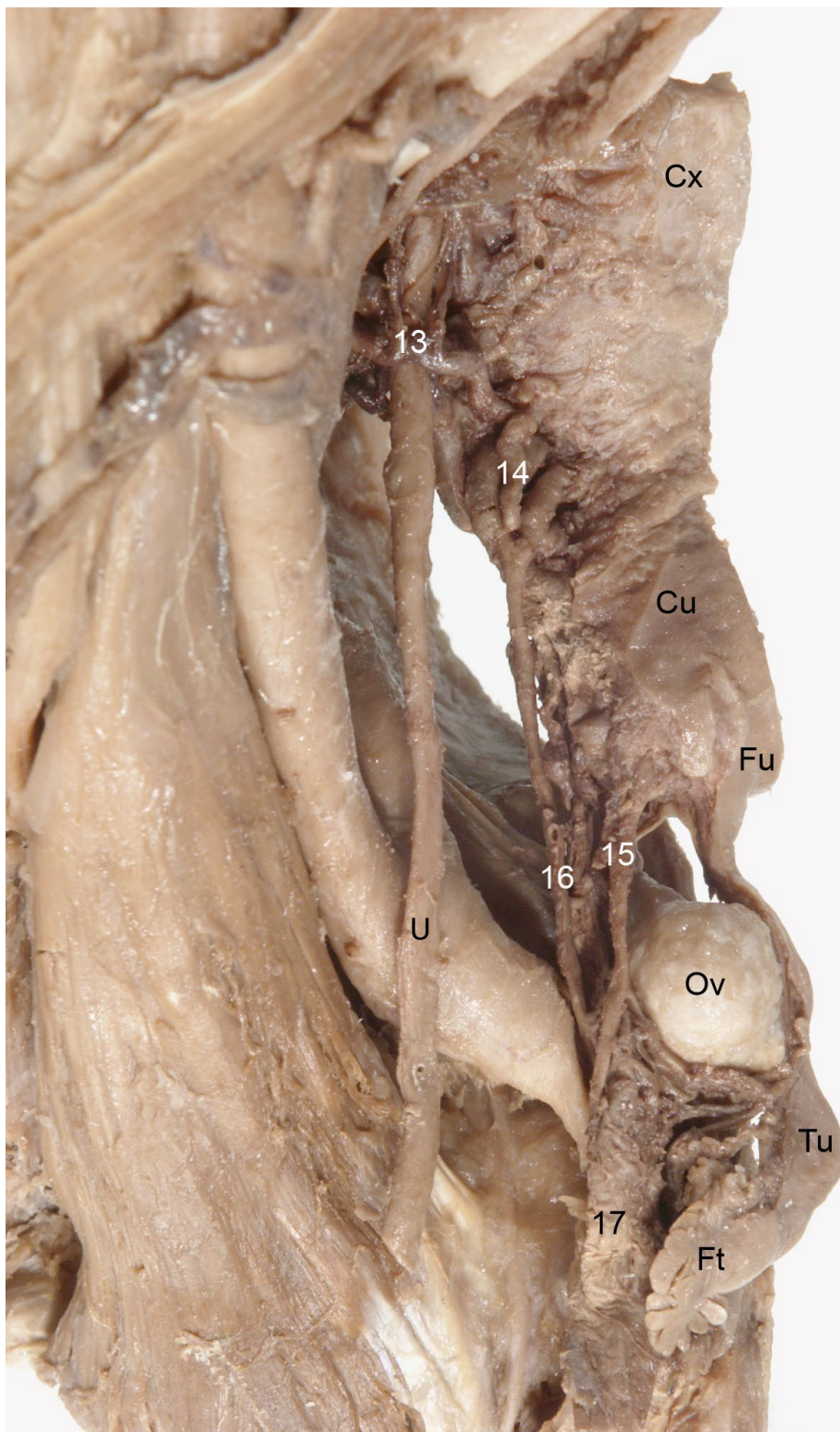


Plate 8 (detail of 7)

Cx	cervix
Cu	corpus uteri
Fu	fundus uteri
Ov	ovarium
Tu	tuba uterina
Ft	fimbriae tuba uterine
U	ureter

13. arteria uterina
14. course of arteria uterina along cervix and corpus uteri
15. arteria uterina, r. ovaricus
16. arteria uterina, r. tubarius
17. arteria ovarica/ lig. suspensorium (lig. infundibulopelvicum)



9

Missing

10

Spec. 69



Plate 10 (view from medial to lateral)

- OP os pubis
- P promontorium
- OS os sacrum
- R rectum
- B bladder
- V vagina
- Cx cervix
- Ut uterus
- U ureter
- Ad adnex



11

18
21
22
22
22
20
19

Plate 11 (detail of 10)

- 18. arteria pudenda interna
- 19. arteria vaginalis
- 20. arteria rectalis (inferior or media)
- 21. vena iliaca interna
- 22. plexus sacralis



12

Missing

13

Spec. 69



Plate 13 (view from lateral inferior)

- OP os pubis
- TI tuber ischiadicum
- AC acetabulum
- LI lig. inguinale
- CO canalis obturatorius



14

Spec. 67

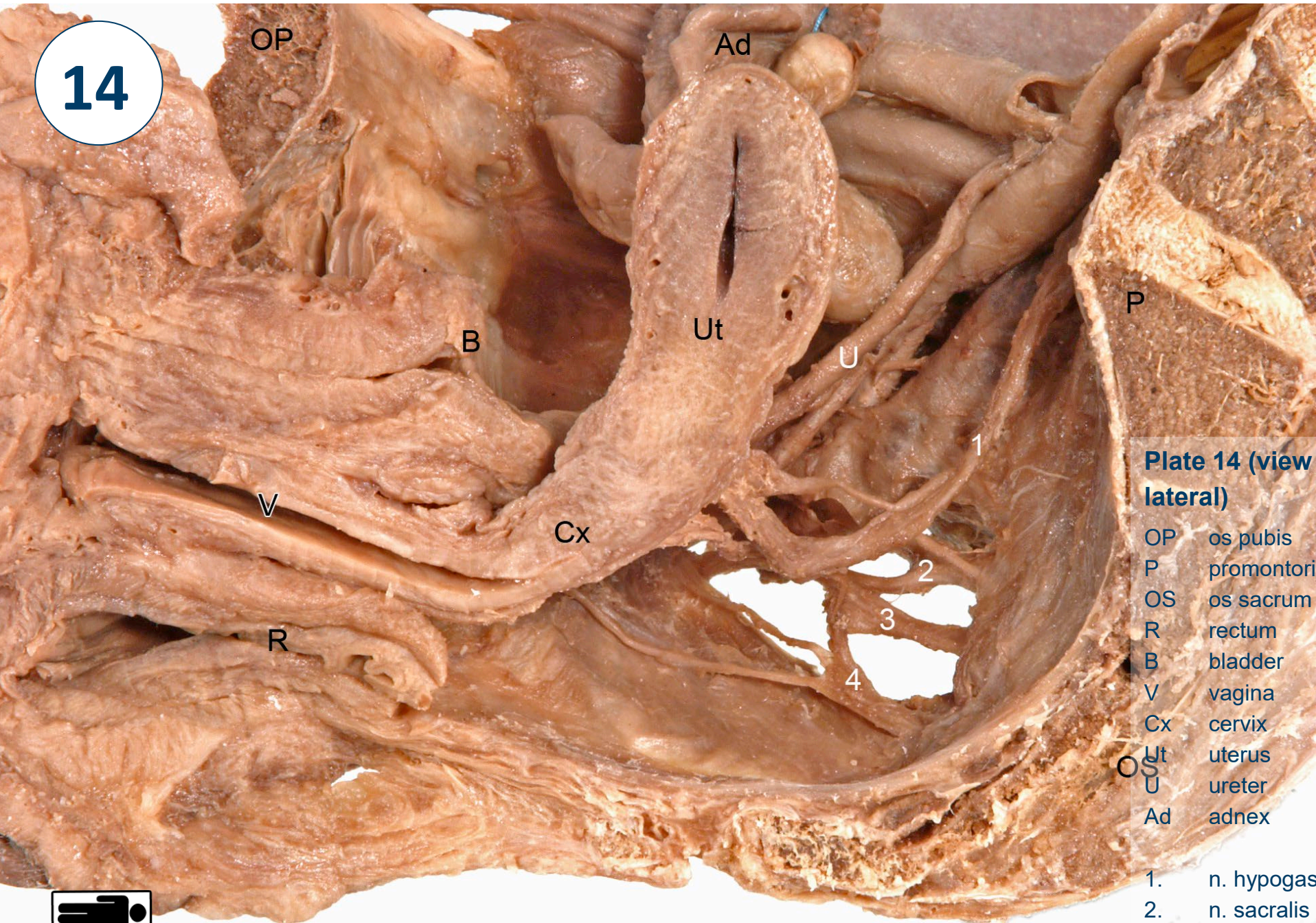


Plate 14 (view from medial to lateral)

- OP os pubis
- P promontorium
- OS os sacrum
- R rectum
- B bladder
- V vagina
- Cx cervix
- Ut uterus
- U ureter
- Ad adnex

- 1. n. hypogastricus
- 2. n. sacralis ramus anterior S2
- 3. n. sacralis ramus anterior S3
- 4. n. sacralis ramus anterior S4



15

Spec. 67

Plate 15 (detail of 14)

1. n. hypogastricus
2. n. sacralis ramus anterior S2
3. n. sacralis ramus anterior S3
4. n. sacralis ramus anterior S4
5. pelvic splanchnic nerve
6. plexus hypogastricus inferior (pelvic plexus)
7. n. pudendus
8. n. levator ani



16

Spec. 67

Ut

V

Cx

PHI

PHI

aV

aU

U

Plate 16 (detail of 15, view slightly more from postero superior)

- V vagina
- Cx cervix
- Ut uterus
- U ureter
- PHI plexus hypogastricus inferior
- aU arteria uterina
- aV arteria vaginalis





Plate 17 (view from posterior lateral)

OS os sacrum
 AN anus
 LM labium majorum

9. tuber ischiadicum
 10. spina ischiadica
 11. lig. sacrospinale
 12. lig. sacrotuberale
 13. m. levator ani



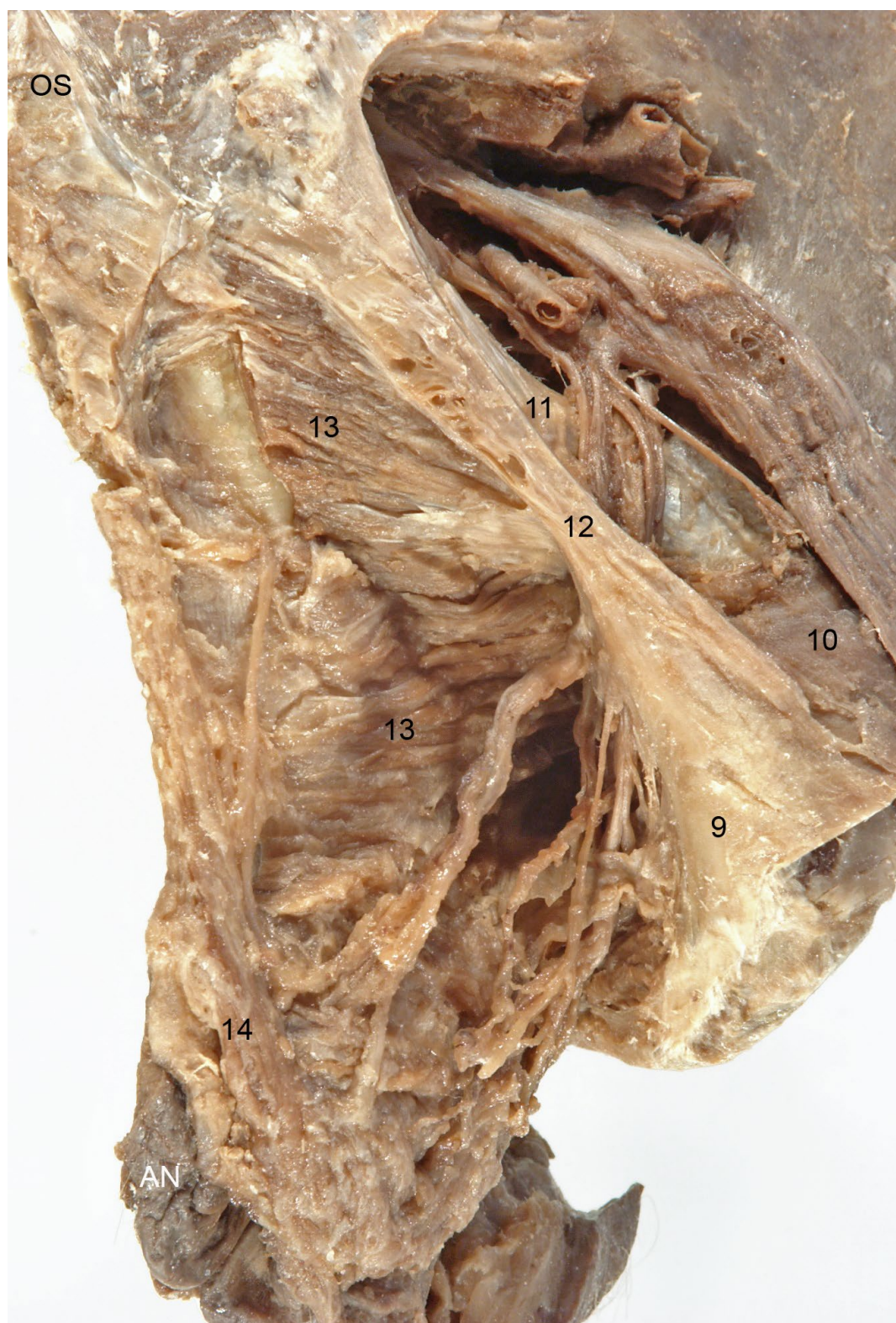


Plate 18 (detail of 17)

- | | |
|-----|---------------------------|
| OS | os sacrum |
| AN | anus |
| 9. | tuber ischiadicum |
| 10. | spina ischiadica |
| 11. | lig. sacrospinale |
| 12. | lig. sacrotuberale |
| 13. | m. levator ani |
| 14. | m. sphincter ani externus |



**Plate 19 (detail of 18)**

- 15. n. pudendus
- 16. n. ischiadicus
- 17. nn. anales inferiores (rami anales inferiores)
- 18. nn. perineales (rami perineales)



BACK

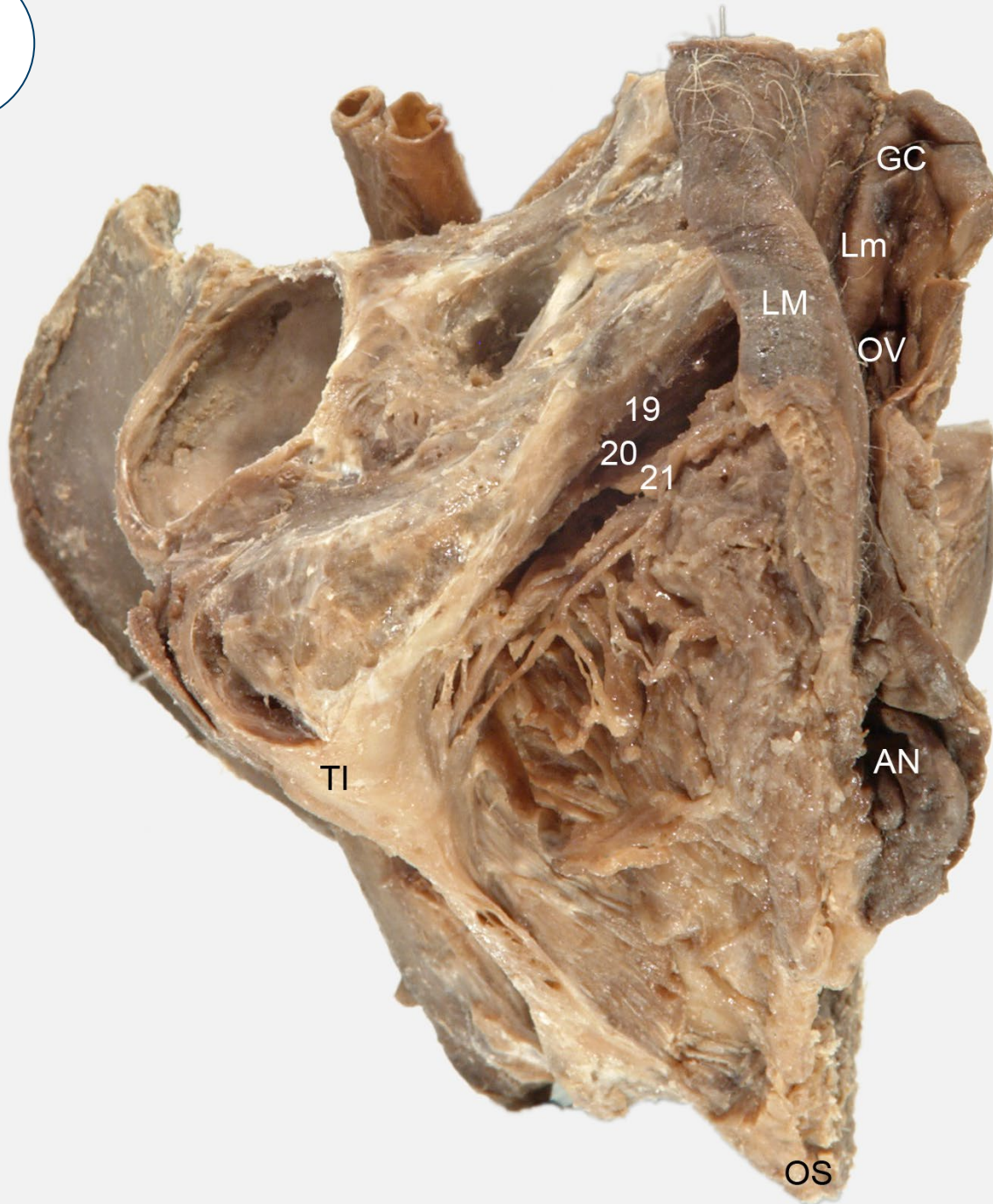


Plate 20 (view from below, view on perineum)

OS	os sacrum
TI	tuber ischiadicum
AN	anus
LM	labium majorum
Lm	labium minorum
OV	ostium vaginae
GC	glans clitoridis

19.	m. ischiocavernosus
20.	m. transversus perinei superficialis
21.	nn. labiales posteriores



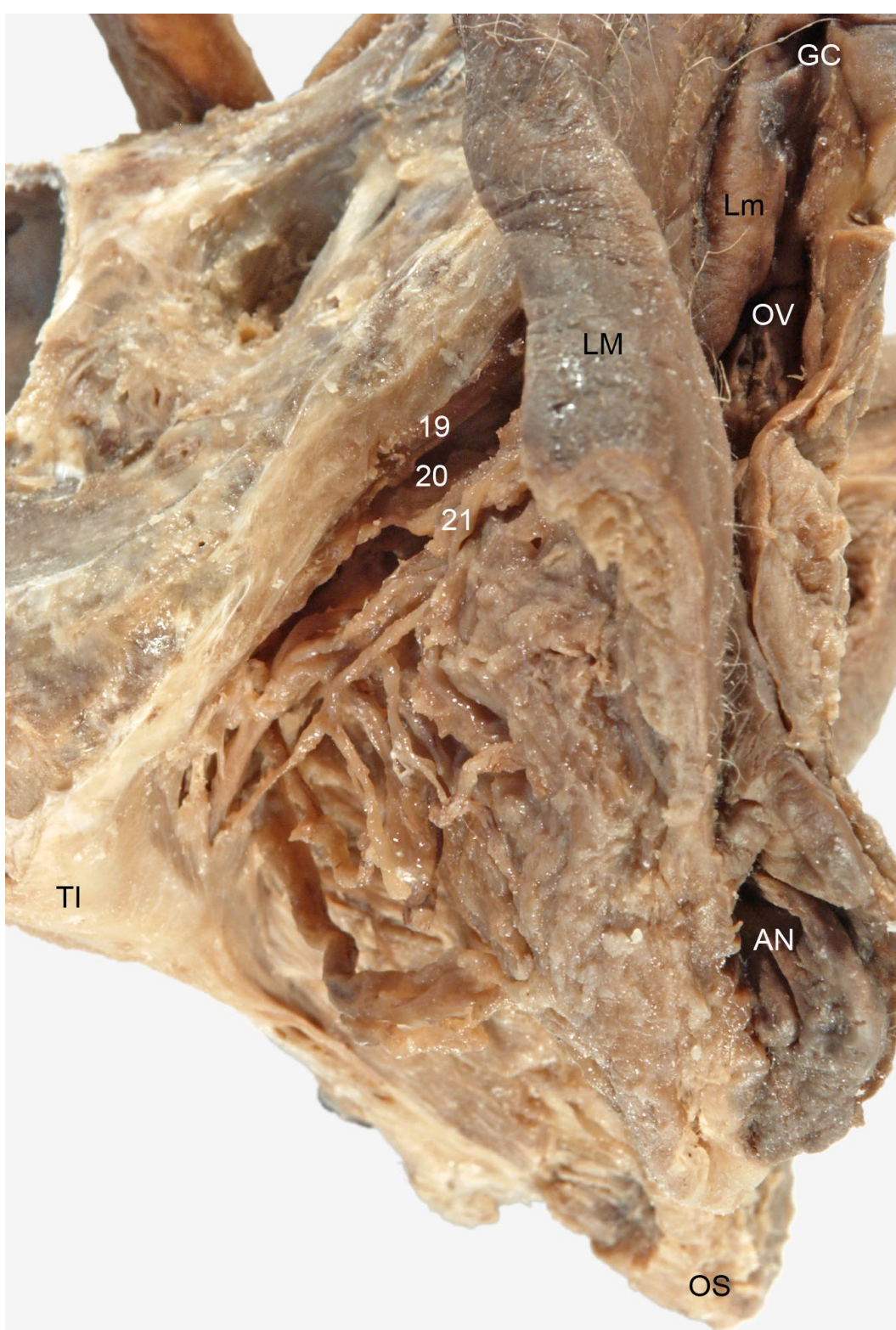


Plate 21 (detail of 20)

OS	os sacrum
TI	tuber ischiadicum
AN	anus
LM	labium majorum
Lm	labium minorum
OV	ostium vaginae
GC	glans clitoridis

- | | |
|-----|--------------------------------------|
| 19. | m. ischiocavernosus |
| 20. | m. transversus perinei superficialis |
| 21. | nn. labiales posteriores |



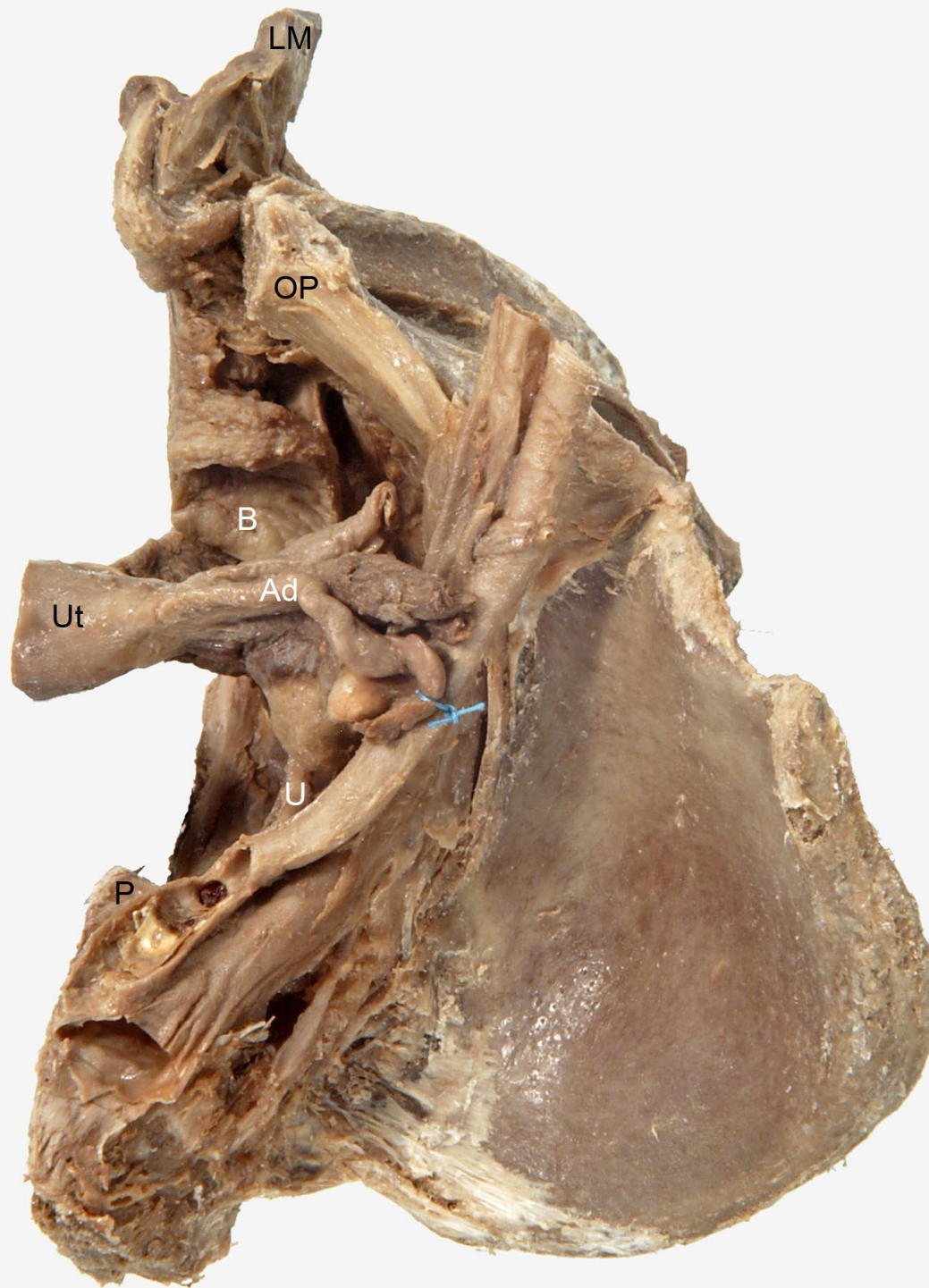


Plate 22 (viewing into pelvic cavity from superior)

OP	os pubis
LM	labium majorum
B	bladder
Ut	uterus
U	ureter
Ad	adnex
P	promontorium



**Plate 23 (detail of 22)**

- 22. lig. teres uteri (lig. rotundum)
- 23. lig. suspensorium ovarii
(lig. infundibulopelvicum)
- 24. tuba uterina
- 25. fimbriae tubae uterinae
- 26. ovarium





Plate 24 (as 23, slightly more from posterior, focus on depth)

- 27. n. hypogastricus
- 28. n. levator ani



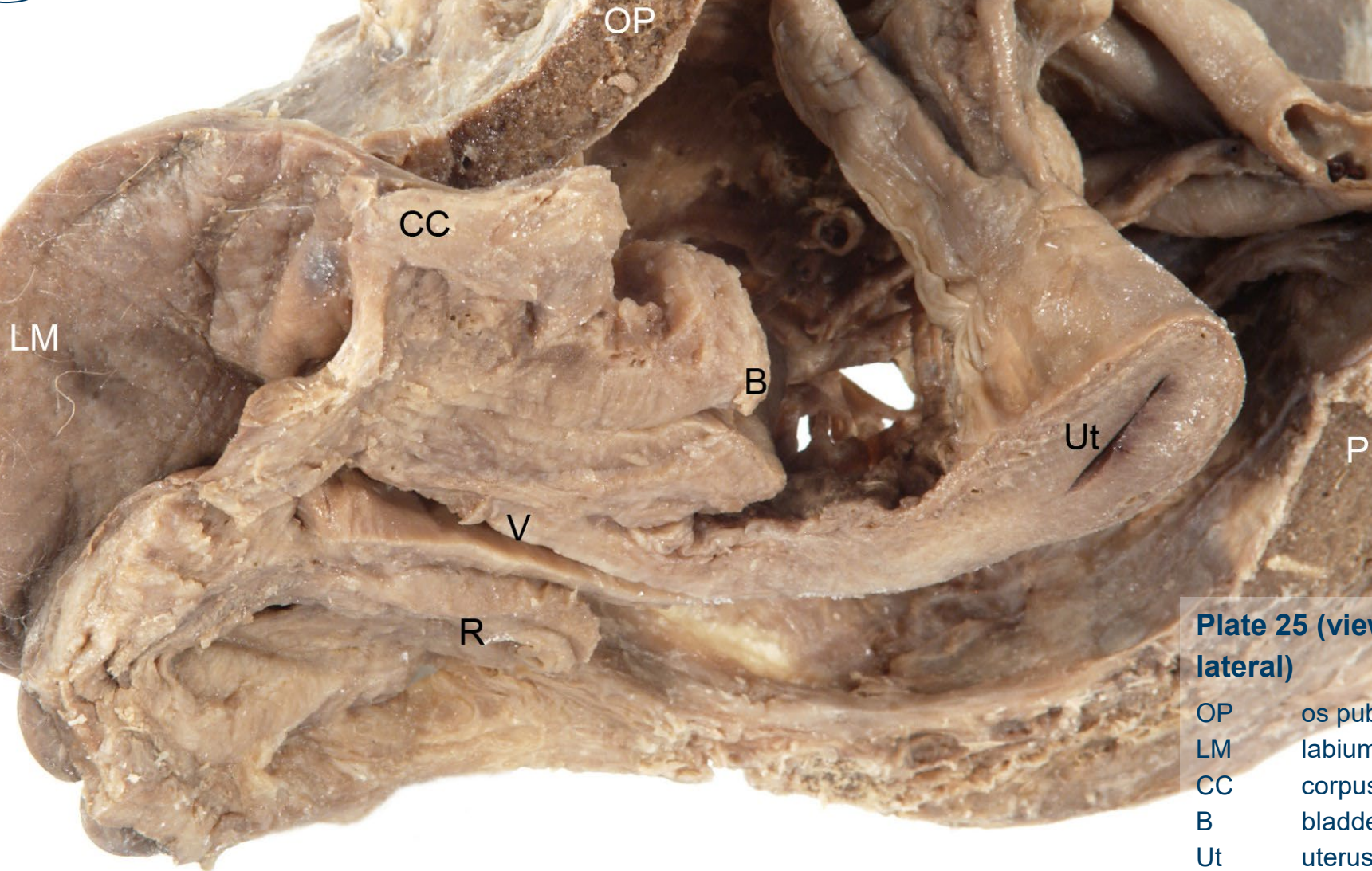


Plate 25 (view from medial to lateral)

OP	os pubis
LM	labium majorum
CC	corpus cavernosum clitoridis
B	bladder
Ut	uterus
V	vagina
R	rectum
P	promontorium



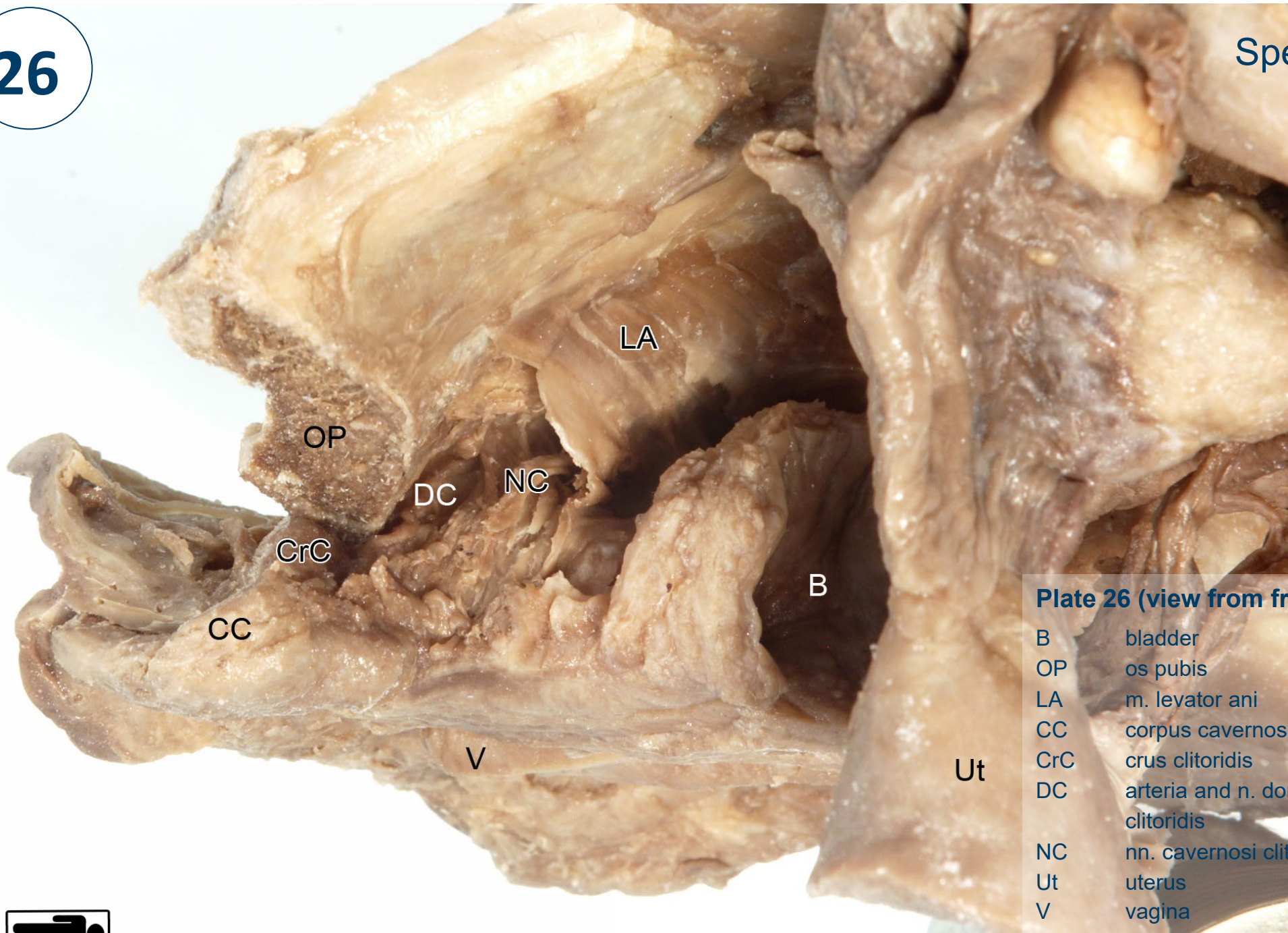


Plate 26 (view from front)

B	bladder
OP	os pubis
LA	m. levator ani
CC	corpus cavernosum clitoridis
CrC	crus clitoridis
DC	arteria and n. dorsalis clitoridis
NC	nn. cavernosi clitoridis
Ut	uterus
V	vagina



27

Spec. 70

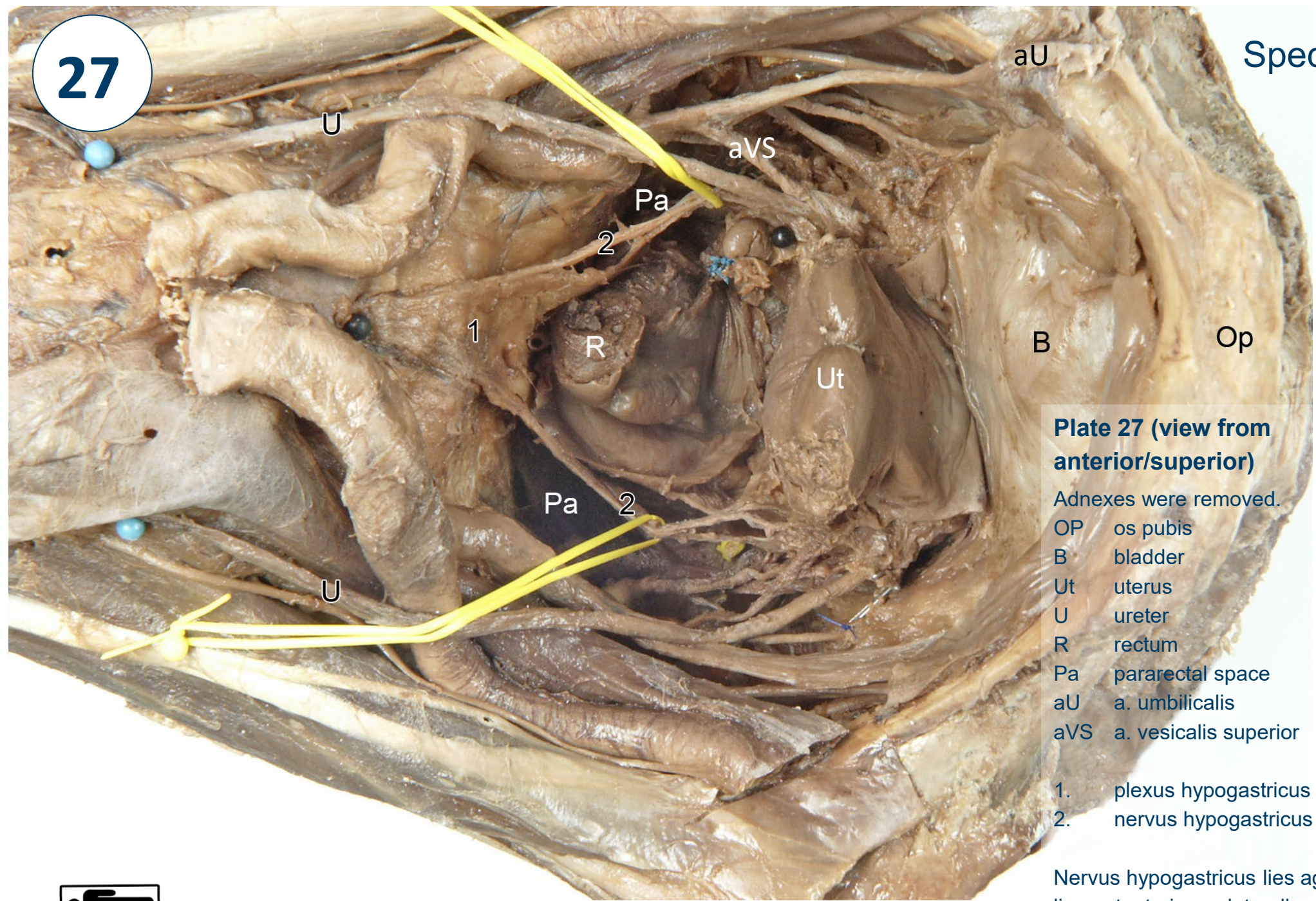


Plate 27 (view from anterior/superior)

Adnexes were removed.

- OP os pubis
- B bladder
- Ut uterus
- U ureter
- R rectum
- Pa pararectal space
- aU a. umbilicalis
- aVS a. vesicalis superior

- 1. plexus hypogastricus superior
- 2. nervus hypogastricus

Nervus hypogastricus lies against/ in lig. rectouterinum, laterally of it.





Plate 28 (detail of 27)

B bladder
 Ut uterus
 U ureter
 R rectum

1. plexus hypogastricus superior
2. nervus hypogastricus
3. n. splanchnicus pelvici (at yellow mark)

Nervus hypogastricus lies against/ in lig. rectouterinum, laterally of it.





Plate 29 (view from anterior/superior)

1. uterus
2. ovaria
3. rectum
4. bladder
5. os pubis/ symphysis promontorium
6. os pubis





Plate 30 (detail of 29)

1. uterus
2. ovarium
3. rectum
4. bladder (not labelled on this photo)
5. os pubis/ symphysis
6. promontorium
7. lig. ovarii proprium
8. tuba uterinae
9. lig. suspensorium ovarii (lig. Infundibulopelvicum)
10. mesosalpinx
11. mesovarium
12. lig. latum. uteri (this part is also mesometrium)
13. lig. teres uteri (lig. rotundum)



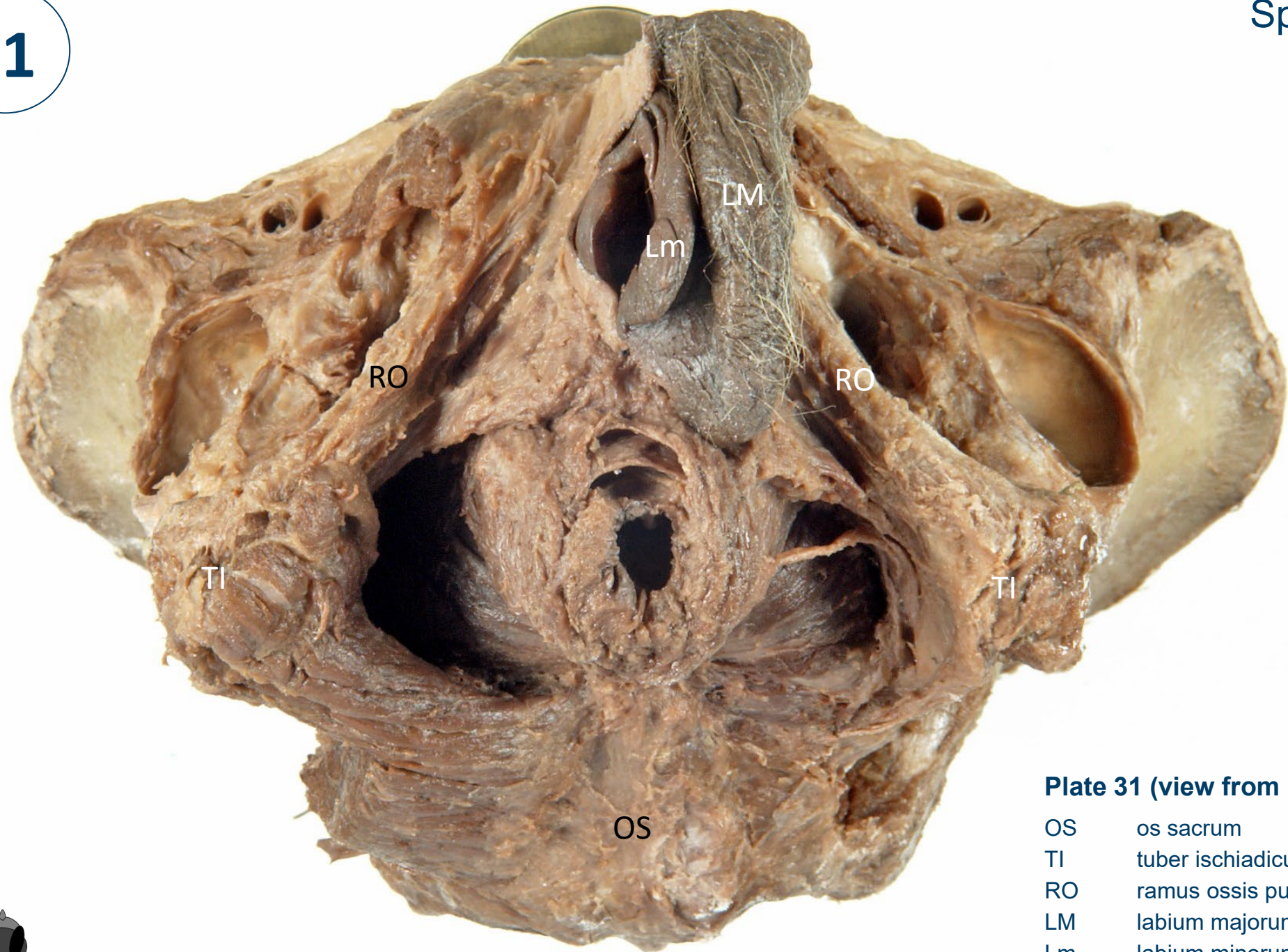


Plate 31 (view from inferior)

OS	os sacrum
TI	tuber ischiadicum
RO	ramus ossis pubis
LM	labium majorum
Lm	labium minorum



Ro

1

4

3

5

2

Ti

Plate 32 (detail of 31)

1. membrana perinei / diafragma urogenitale, m. transversus perinei profundus
2. m. gluteus major
3. m. sphincter ani externus, pars superficialis
4. m. sphincter ani externus, pars profundus
5. m. levator ani - m. pubococcygeus



Plate 33 (as 32, view more from posterior)

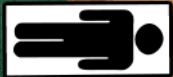
- 3. m. sphincter ani externus, pars superficialis
- 4. m. sphincter ani externus, pars profundus
- 5. m. levator ani - m. pubococcygeus
- 6. lig. anococcygeum
- 7. m. levator ani - m. puborectalis
- 8. n. pudendus



34

Spec. 66

1. Ureter
2. Ostium ureteris in bladder



2

1

9900

35



- 1. Os pubis
- 2. M. obturatorius internus
- 3. Arcus tendineus of m. levator ani
- 4. M. levator ani
- 5. M. coccygeus
- 6. Posterior border of m. coccygeus, entrance of pudendal canal
- 7. Canalis obturatorius
- 8. N. obturatorius
- 9. A. obturatoria

This presentation is licensed by Leiden University Medical Center under [Creative Commons Attribute NonCommercial ShareAlike 4.0 International](https://creativecommons.org/licenses/by-nc-sa/4.0/) license



The unlabeled photo's are available at <https://anatomytool.org>

Frame is A4 print outside size