

**ONTWORPEN
EN
VERVAARDIGD
DOOR**

**Capaciteitsgroep
Anatomie/
Embryologie
UM**

i.s.m.

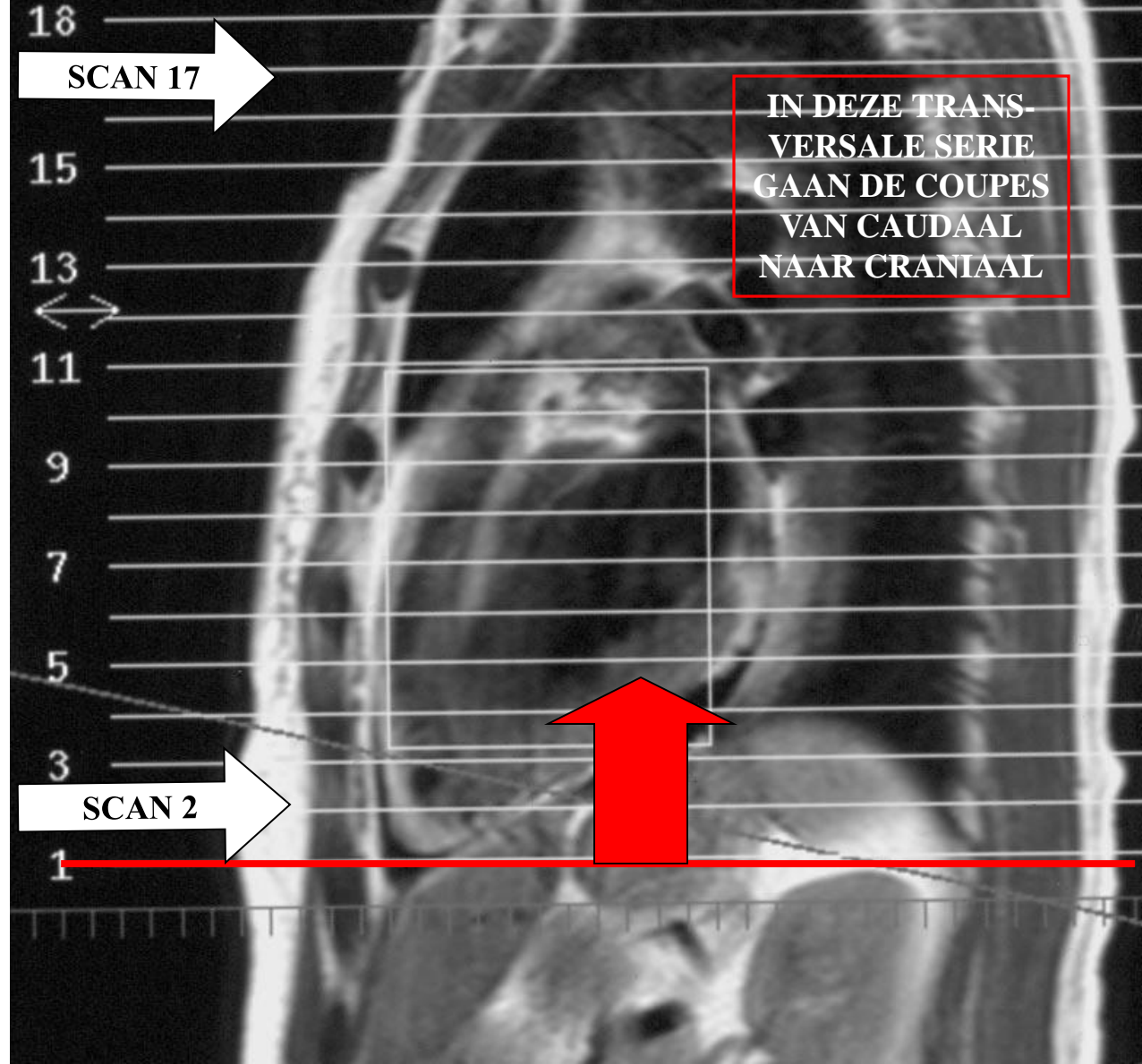
**Afdeling
Radiologie
AZM**

**J.C. van der Wal
H. van Mameren
G. Snoep**

**januari
2002**

Versie
2004

**Dit is een serie dwarse (transversale) MRI's
van het hart. Start met muisklik. Muisklik /
spatiebalk voor volgende foto c.q. scan.**



Sc6/2
SEPI / M
Td 150 ms

< !, l >



**HIER VERSCHIJNT
STEEDS DE VOOR-
GAANDE SCAN.
IN DEZE
TRANSVERSALE
SERIE 2 t/m 17
GAAN DE COUPES
VAN CAUDAAL
NAAR CRANIAAL**



RECHTER ATRIUM	82
RECHTER VENTRIKEL	86
LINKER ATRIUM	93
LINKER VENTRIKEL	96
TRUNCUS PULMONALIS	91
ARTERIA PULMONALIS	92
AORTA ASCENDENS	102
ARCUS AORTAE	27
AORTA THORACICA	40
VENA CAVA SUPERIOR	34
VENA CAVA INFERIOR	36
VENA PULMONALIS	95

Sc6/3
SEEP1 / M
Td 194 ms

< !, | >



VORIGE SCAN

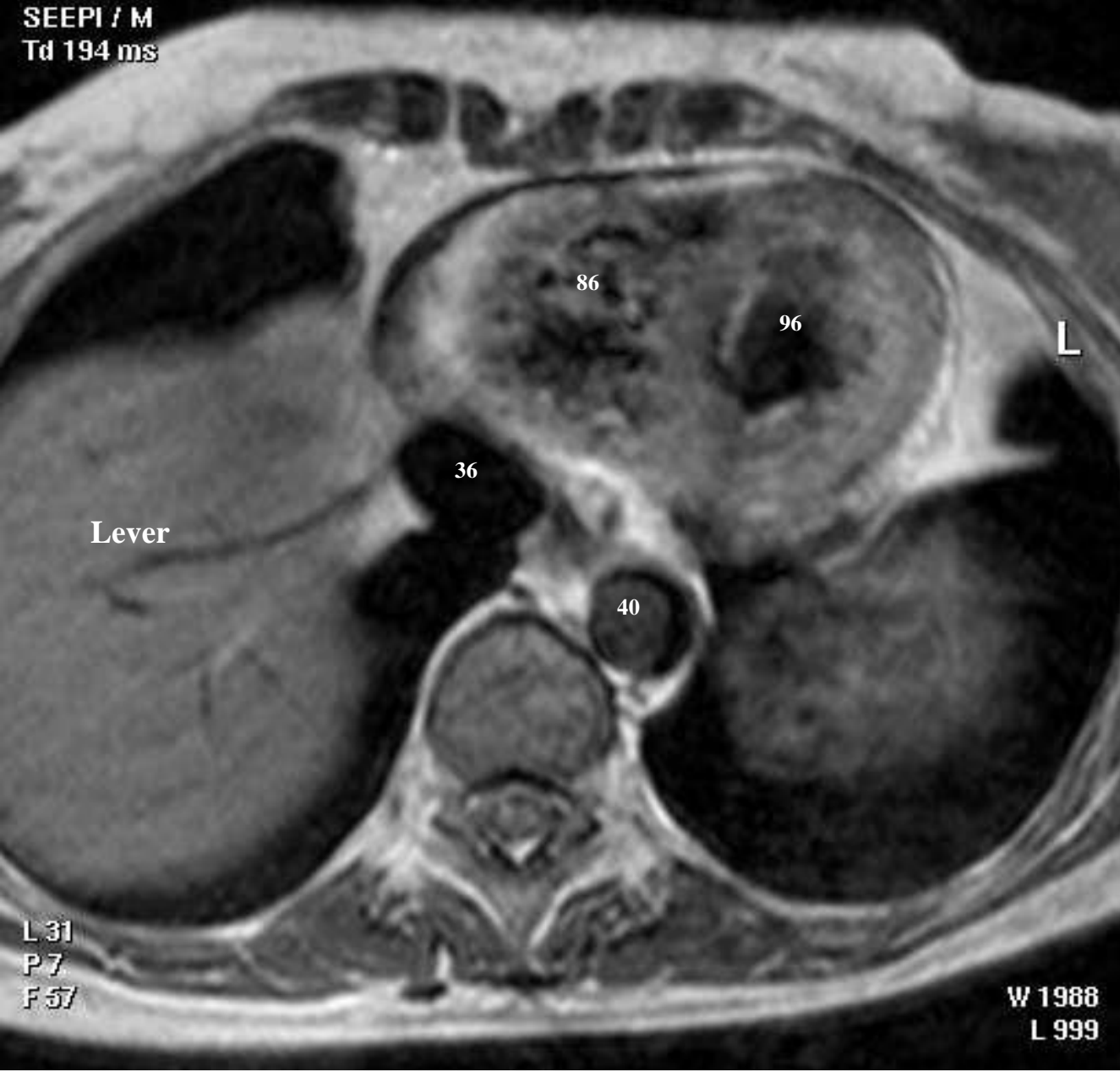
RECHTER ATRIUM	82
RECHTER VENTRIKEL	86
LINKER ATRIUM	93
LINKER VENTRIKEL	96
TRUNCUS PULMONALIS	91
ARTERIA PULMONALIS	92
AORTA ASCENDENS	102
ARCUS AORTAE	27
AORTA THORACICA	40
VENA CAVA SUPERIOR	34
VENA CAVA INFERIOR	36
VENA PULMONALIS	95

L 31
P 7
F 68

W 1988
L 999

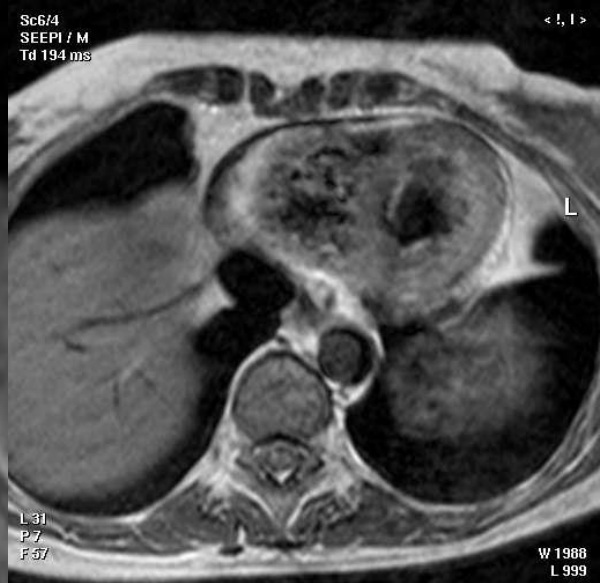
Sc6/4
SEEP1 / M
Td 194 ms

< !, ! >



VORIGE SCAN

RECHTER ATRIUM	82
RECHTER VENTRIKEL	86
LINKER ATRIUM	93
LINKER VENTRIKEL	96
TRUNCUS PULMONALIS	91
ARTERIA PULMONALIS	92
AORTA ASCENDENS	102
ARCUS AORTAE	27
AORTA THORACICA	40
VENA CAVA SUPERIOR	34
VENA CAVA INFERIOR	36
VENA PULMONALIS	95



**VORIGE
SCAN**

RECHTER ATRIUM	82
RECHTER VENTRIKEL	86
LINKER ATRIUM	93
LINKER VENTRIKEL	96
TRUNCUS PULMONALIS	91
ARTERIA PULMONALIS	92
AORTA ASCENDENS	102
ARCUS AORTAE	27
AORTA THORACICA	40
VENA CAVA SUPERIOR	34
VENA CAVA INFERIOR	36
VENA PULMONALIS	95



**VORIGE
SCAN**

RECHTER ATRIUM	82
RECHTER VENTRIKEL	86
LINKER ATRIUM	93
LINKER VENTRIKEL	96
TRUNCUS PULMONALIS	91
ARTERIA PULMONALIS	92
AORTA ASCENDENS	102
ARCUS AORTAE	27
AORTA THORACICA	40
VENA CAVA SUPERIOR	34
VENA CAVA INFERIOR	36
VENA PULMONALIS	95



**VORIGE
SCAN**

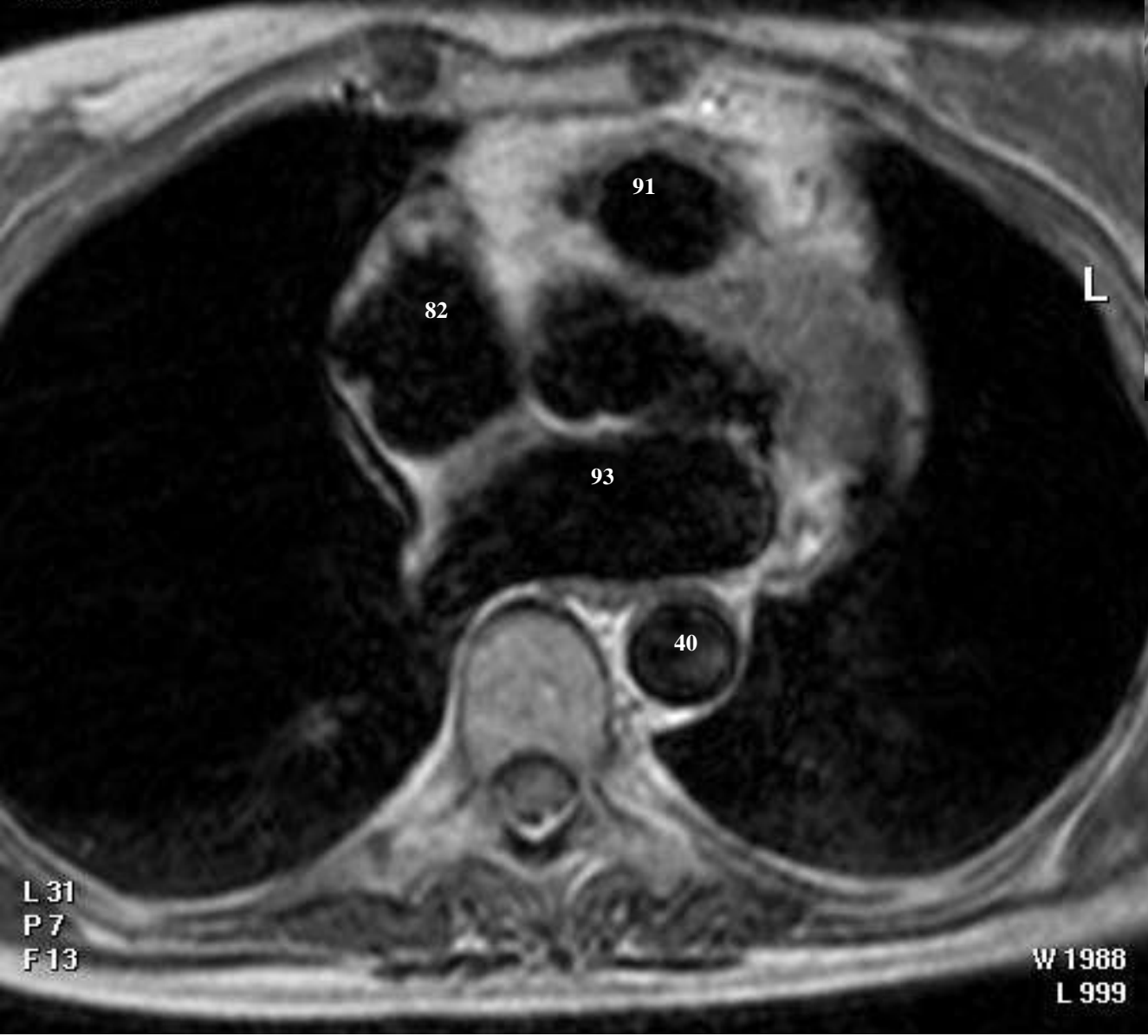
RECHTER ATRIUM	82
RECHTER VENTRIKEL	86
LINKER ATRIUM	93
LINKER VENTRIKEL	96
TRUNCUS PULMONALIS	91
ARTERIA PULMONALIS	92
AORTA ASCENDENS	102
ARCUS AORTAE	27
AORTA THORACICA	40
VENA CAVA SUPERIOR	34
VENA CAVA INFERIOR	36
VENA PULMONALIS	95

Sc6/8
SEEP1 / M
Td 282 ms

< !, ! >

Sc6/7
SEEP1 / M
Td 282 ms

< !, ! >



VORIGE SCAN

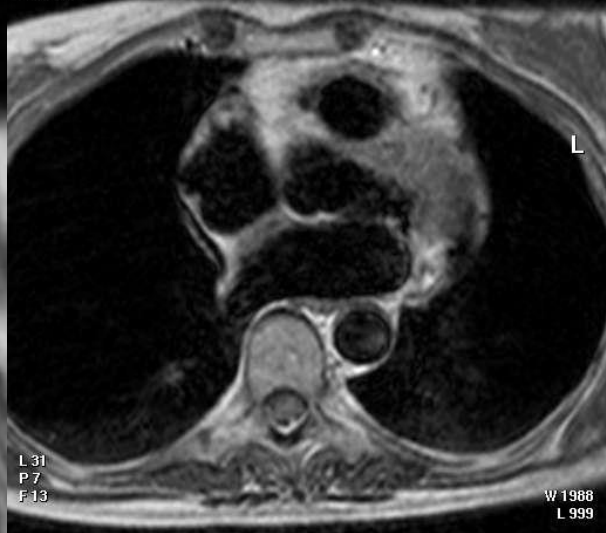
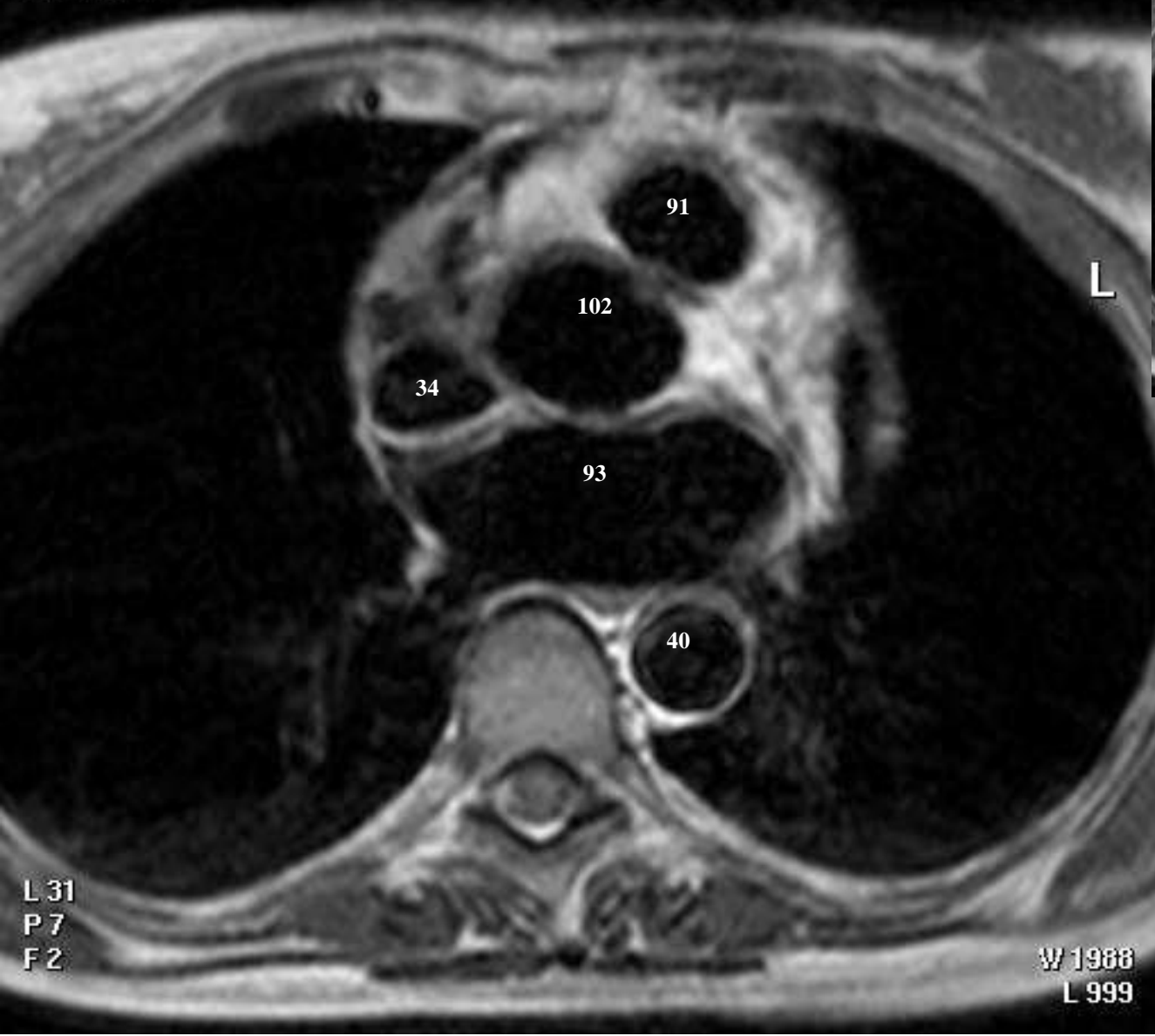
RECHTER ATRIUM	82
RECHTER VENTRIKEL	86
LINKER ATRIUM	93
LINKER VENTRIKEL	96
TRUNCUS PULMONALIS	91
ARTERIA PULMONALIS	92
AORTA ASCENDENS	102
ARCUS AORTAE	27
AORTA THORACICA	40
VENA CAVA SUPERIOR	34
VENA CAVA INFERIOR	36
VENA PULMONALIS	95

Sc6/9
SEEP1 / M
Td 326 ms

< !, | >

Sc6/8
SEEP1 / M
Td 282 ms

< !, | >



**VORIGE
SCAN**

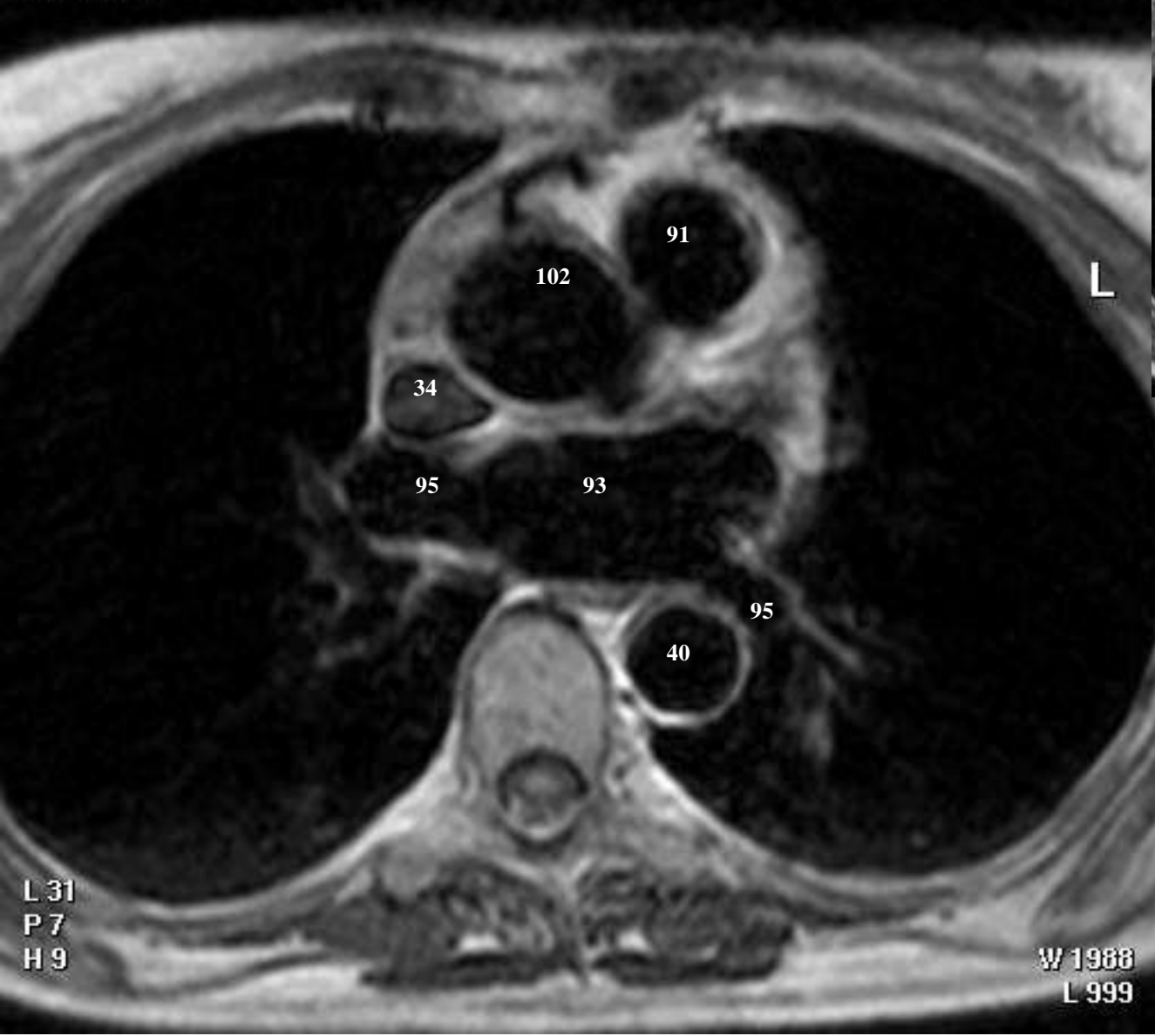
RECHTER ATRIUM	82
RECHTER VENTRIKEL	86
LINKER ATRIUM	93
LINKER VENTRIKEL	96
TRUNCUS PULMONALIS	91
ARTERIA PULMONALIS	92
AORTA ASCENDENS	102
ARCUS AORTAE	27
AORTA THORACICA	40
VENA CAVA SUPERIOR	34
VENA CAVA INFERIOR	36
VENA PULMONALIS	95

Sc6/10
SEEPI / M
Td 326 ms

< !, | >

Sc6/9
SEEPI / M
Td 326 ms

< !, | >



VORIGE SCAN

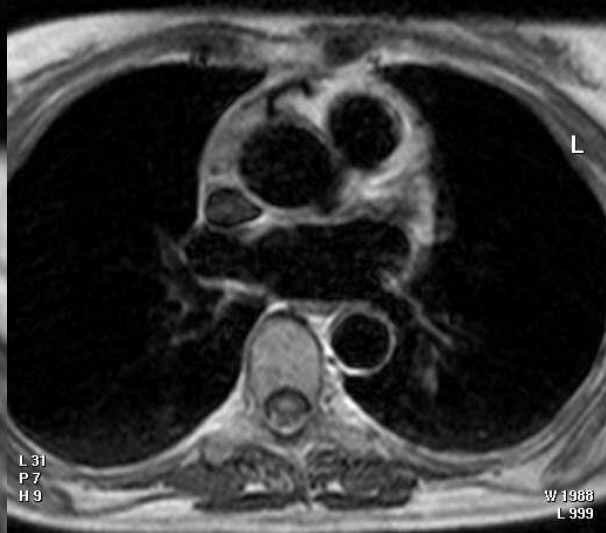
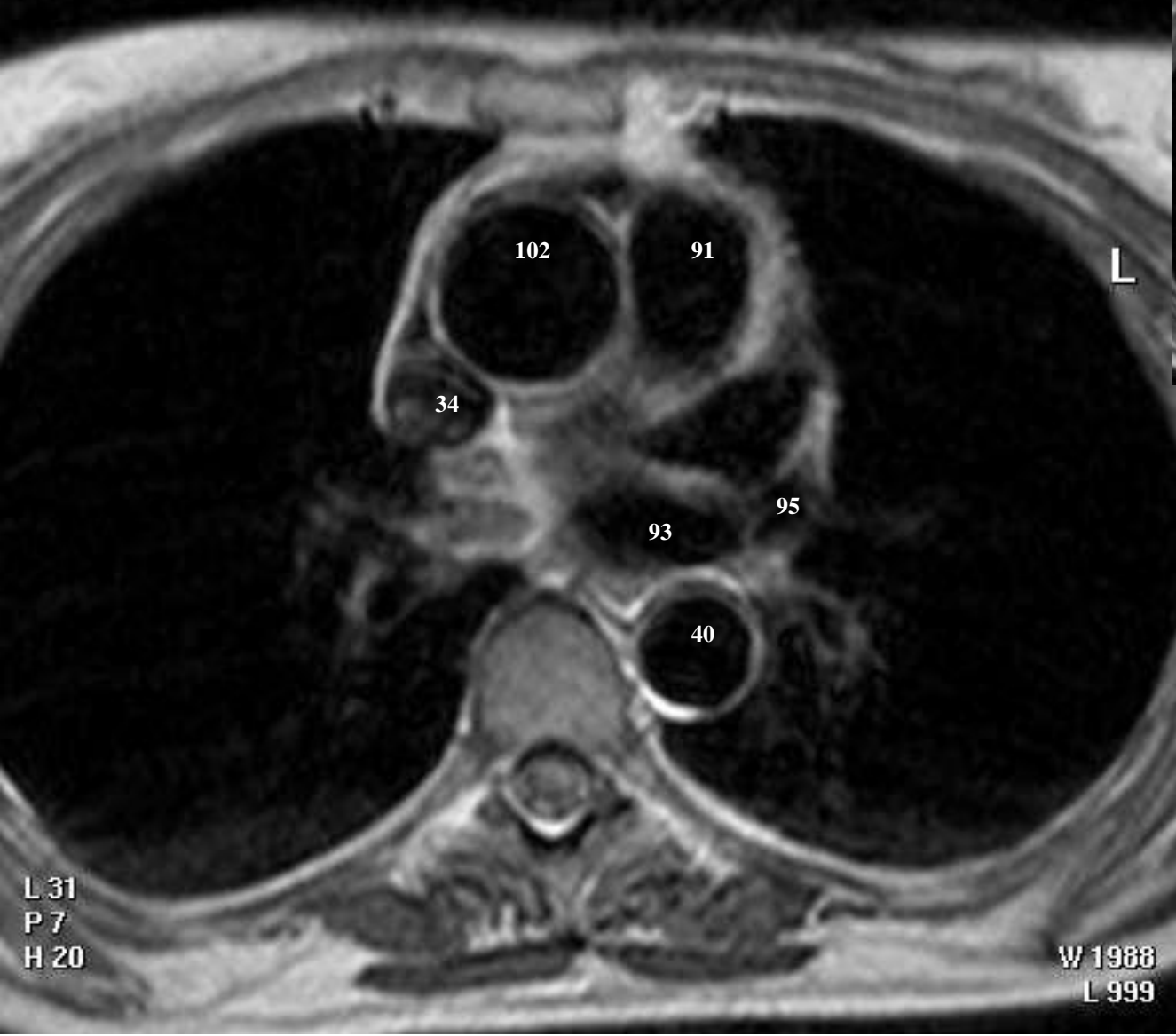
RECHTER ATRIUM	82
RECHTER VENTRIKEL	86
LINKER ATRIUM	93
LINKER VENTRIKEL	96
TRUNCUS PULMONALIS	91
ARTERIA PULMONALIS	92
AORTA ASCENDENS	102
ARCUS AORTAE	27
AORTA THORACICA	40
VENA CAVA SUPERIOR	34
VENA CAVA INFERIOR	36
VENA PULMONALIS	95

Sc6/11
SEEPI / M
Td 371 ms

< !, | >

Sc6/10
SEEPI / M
Td 326 ms

< !, | >



VORIGE SCAN

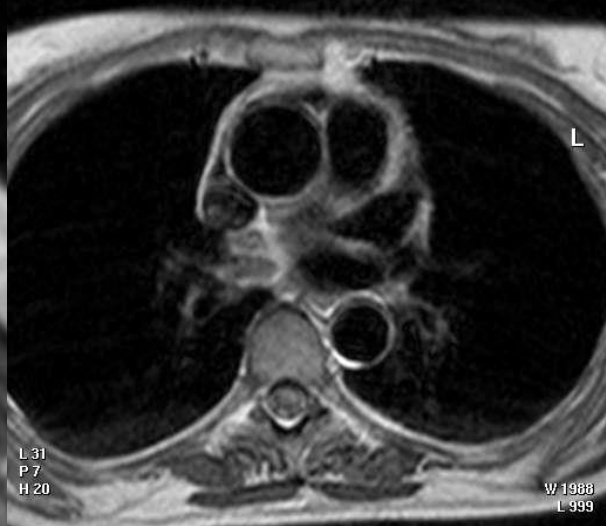
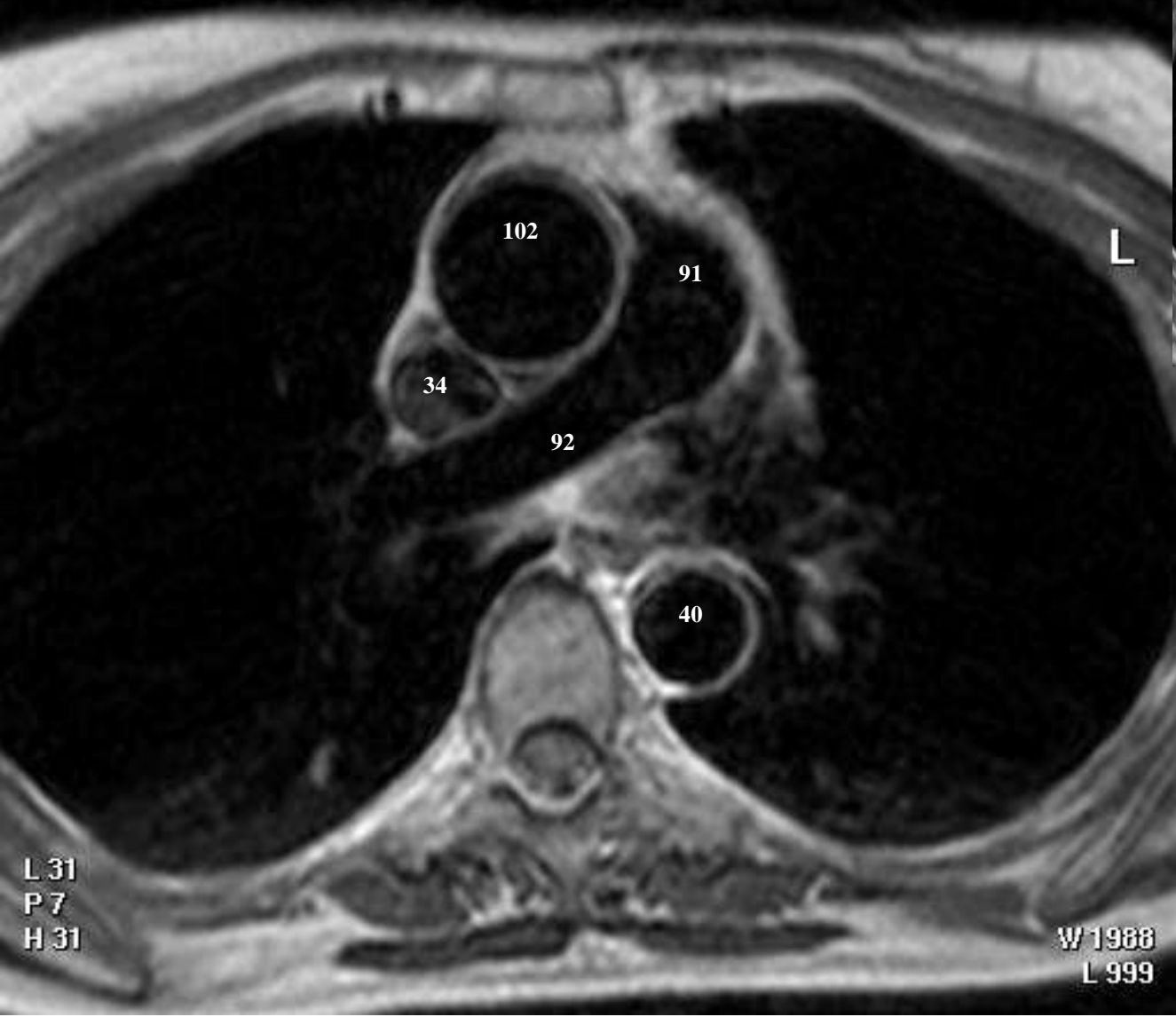
RECHTER ATRIUM	82
RECHTER VENTRIKEL	86
LINKER ATRIUM	93
LINKER VENTRIKEL	96
TRUNCUS PULMONALIS	91
ARTERIA PULMONALIS	92
AORTA ASCENDENS	102
ARCUS AORTAE	27
AORTA THORACICA	40
VENA CAVA SUPERIOR	34
VENA CAVA INFERIOR	36
VENA PULMONALIS	95

Sc6/12
SEEPI / M
Td 371 ms

< !, ! >

Sc6/11
SEEPI / M
Td 371 ms

< !, ! >



VORIGE SCAN

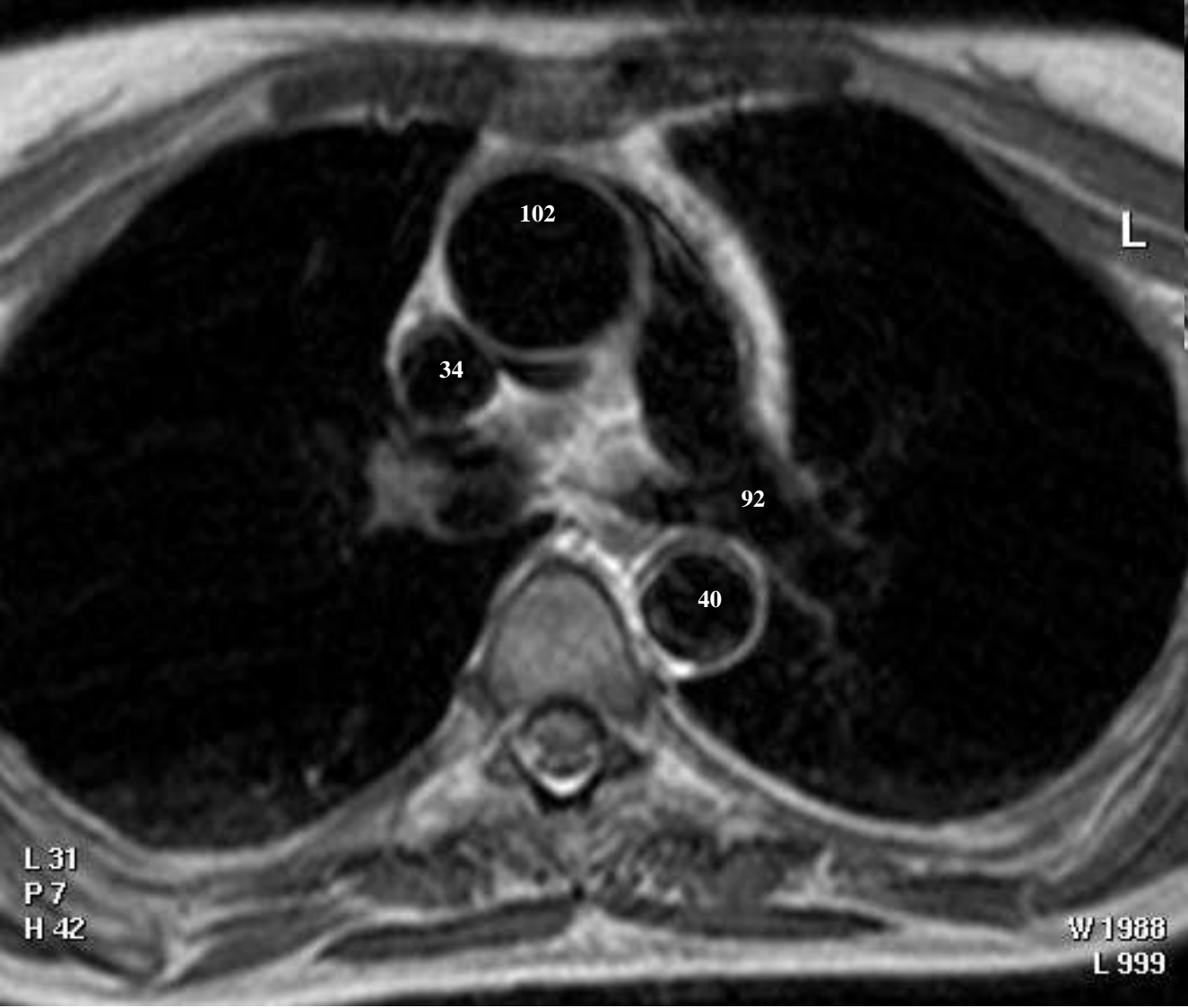
RECHTER ATRIUM	82
RECHTER VENTRIKEL	86
LINKER ATRIUM	93
LINKER VENTRIKEL	96
TRUNCUS PULMONALIS	91
ARTERIA PULMONALIS	92
AORTA ASCENDENS	102
ARCUS AORTAE	27
AORTA THORACICA	40
VENA CAVA SUPERIOR	34
VENA CAVA INFERIOR	36
VENA PULMONALIS	95

Sc6/13
SEEP1 / M
Td 415 ms

< !, ! >

Sc6/12
SEEP1 / M
Td 371 ms

< !, ! >



**VORIGE
SCAN**

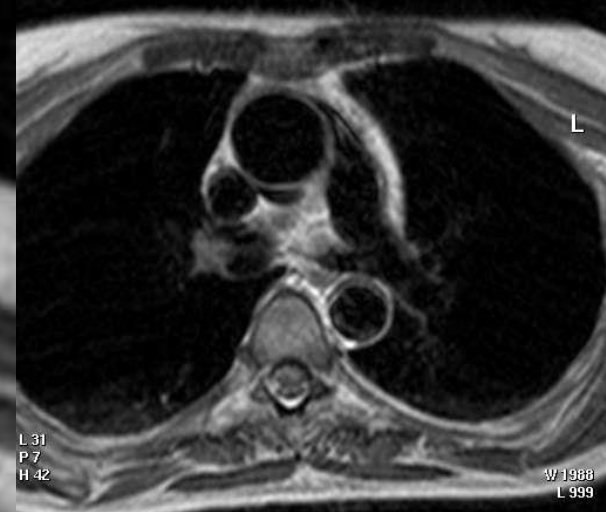
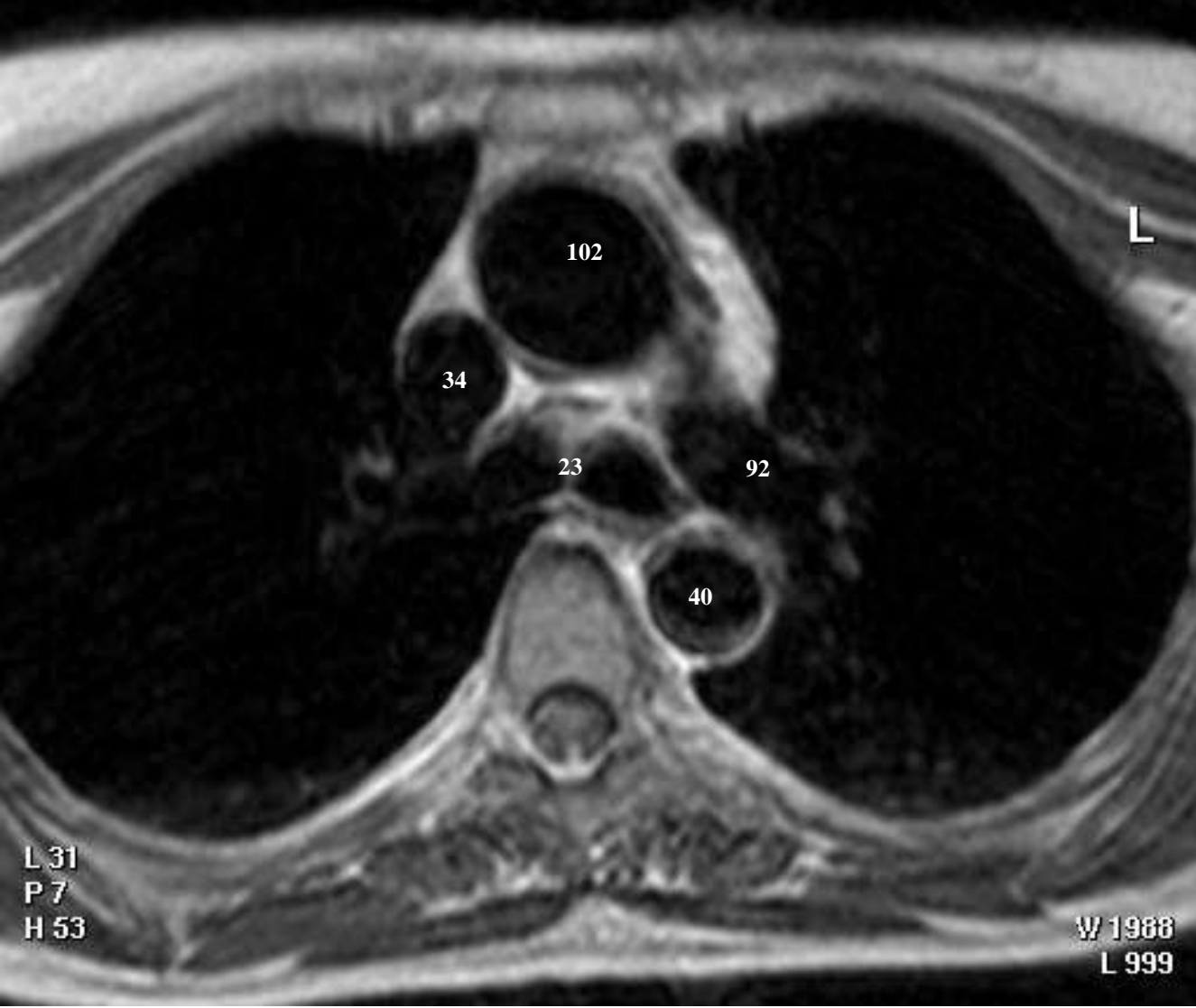
RECHTER ATRIUM	82
RECHTER VENTRIKEL	86
LINKER ATRIUM	93
LINKER VENTRIKEL	96
TRUNCUS PULMONALIS	91
ARTERIA PULMONALIS	92
AORTA ASCENDENS	102
ARCUS AORTAE	27
AORTA THORACICA	40
VENA CAVA SUPERIOR	34
VENA CAVA INFERIOR	36
VENA PULMONALIS	95

Sc6/14
SEEP1 / M
Td 415 ms

< !, ! >

Sc6/13
SEEP1 / M
Td 415 ms

< !, ! >



VORIGE SCAN

RECHTER ATRIUM	82
RECHTER VENTRIKEL	86
LINKER ATRIUM	93
LINKER VENTRIKEL	96
TRUNCUS PULMONALIS	91
ARTERIA PULMONALIS	92
AORTA ASCENDENS	102
ARCUS AORTAE	27
AORTA THORACICA	40
VENA CAVA SUPERIOR	34
VENA CAVA INFERIOR	36
VENA PULMONALIS	95

Scan 6/14

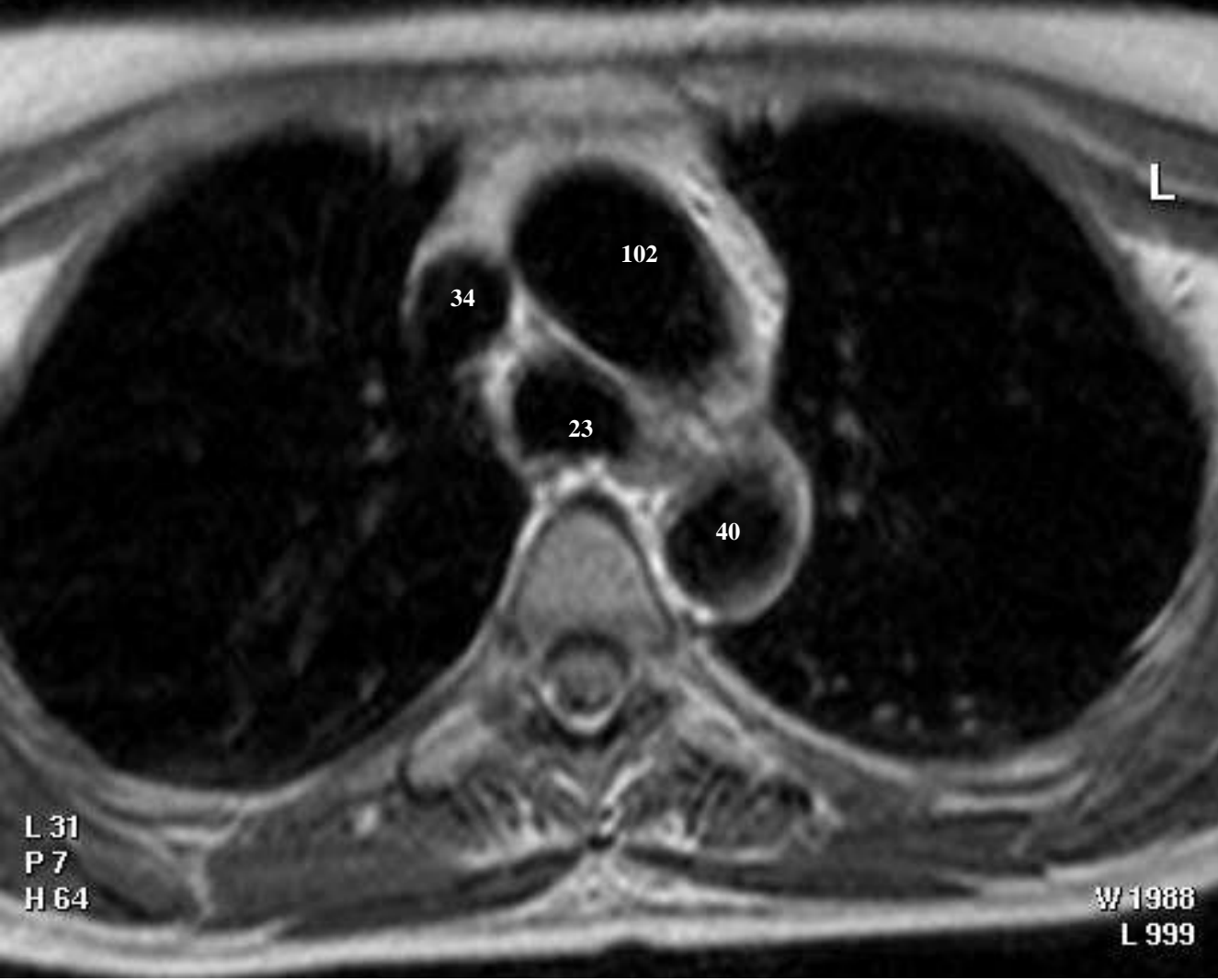
** Trachea

Sc6/15
SEEPI / M
Td 459 ms

< !, ! >

Sc6/14
SEEPI / M
Td 415 ms

< !, ! >



VORIGE SCAN

RECHTER ATRIUM	82
RECHTER VENTRIKEL	86
LINKER ATRIUM	93
LINKER VENTRIKEL	96
TRUNCUS PULMONALIS	91
ARTERIA PULMONALIS	92
AORTA ASCENDENS	102
ARCUS AORTAE	27
AORTA THORACICA	40
VENA CAVA SUPERIOR	34
VENA CAVA INFERIOR	36
VENA PULMONALIS	95

Scan 6/15

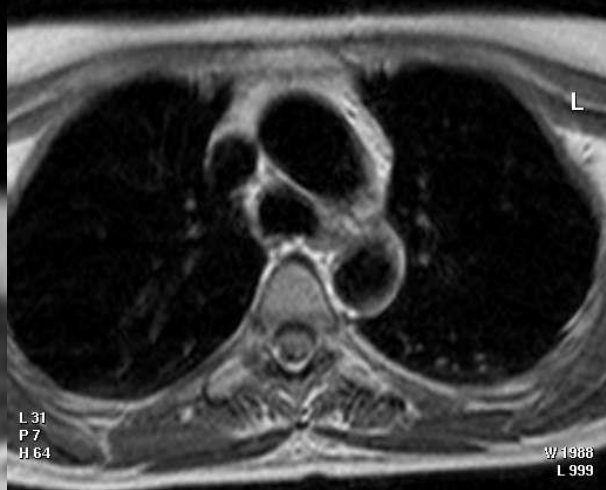
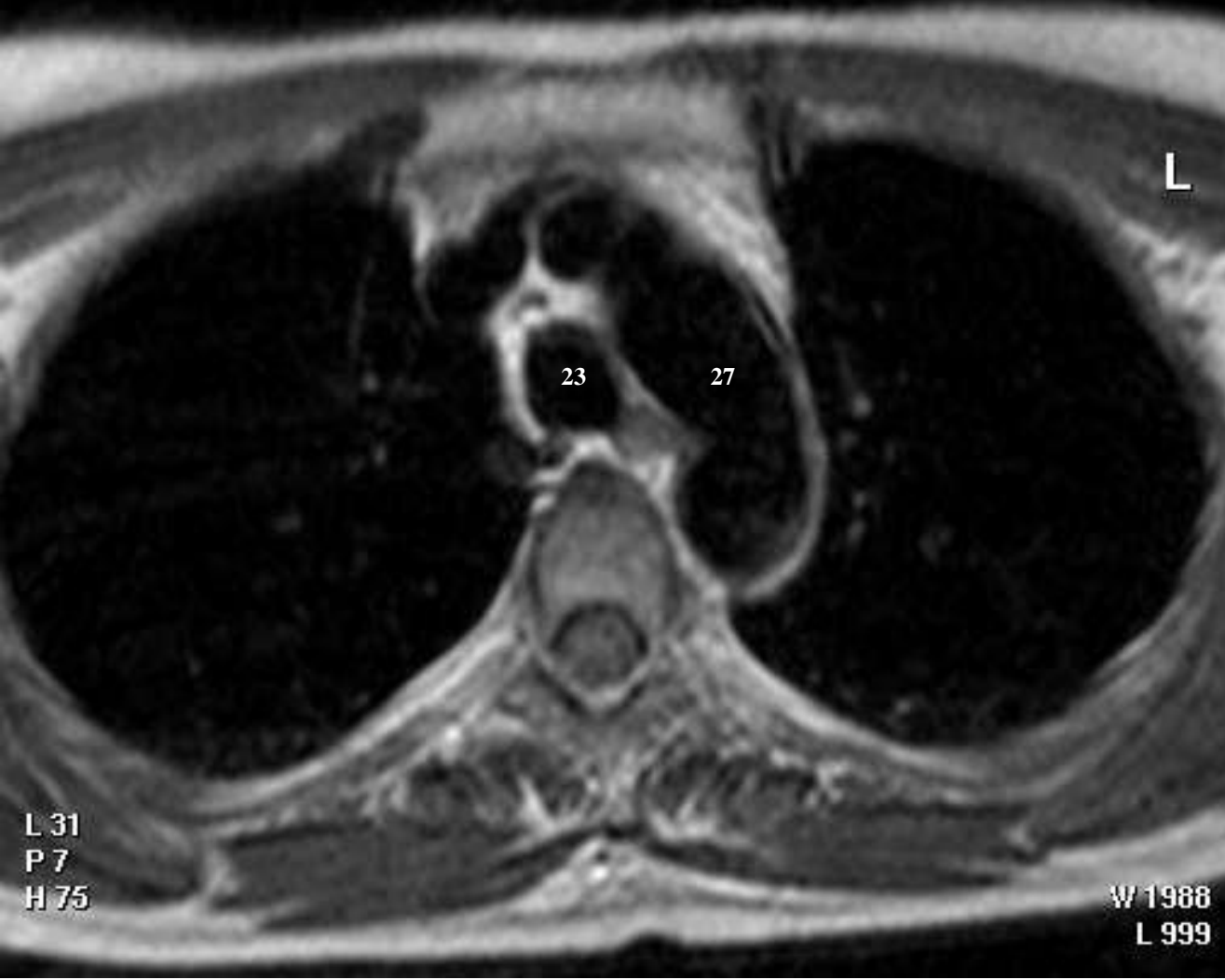
** Trachea

Sc6/16
SEEPI / M
Td 459 ms

< !, | >

Sc6/15
SEEPI / M
Td 459 ms

< !, | >



VORIGE SCAN

RECHTER ATRIUM	82
RECHTER VENTRIKEL	86
LINKER ATRIUM	93
LINKER VENTRIKEL	96
TRUNCUS PULMONALIS	91
ARTERIA PULMONALIS	92
AORTA ASCENDENS	102
ARCUS AORTAE	27
AORTA THORACICA	40
VENA CAVA SUPERIOR	34
VENA CAVA INFERIOR	36
VENA PULMONALIS	95

Scan 6/16

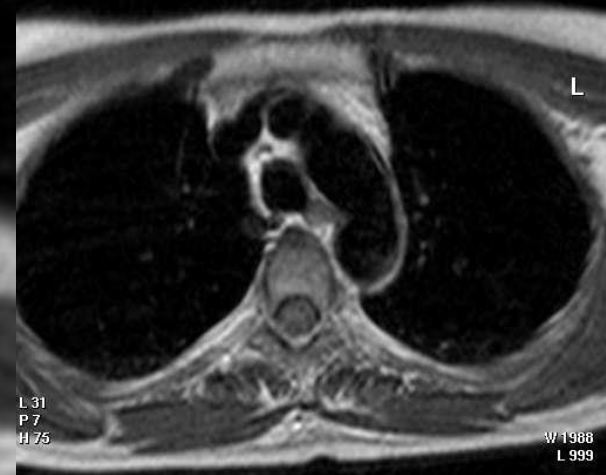
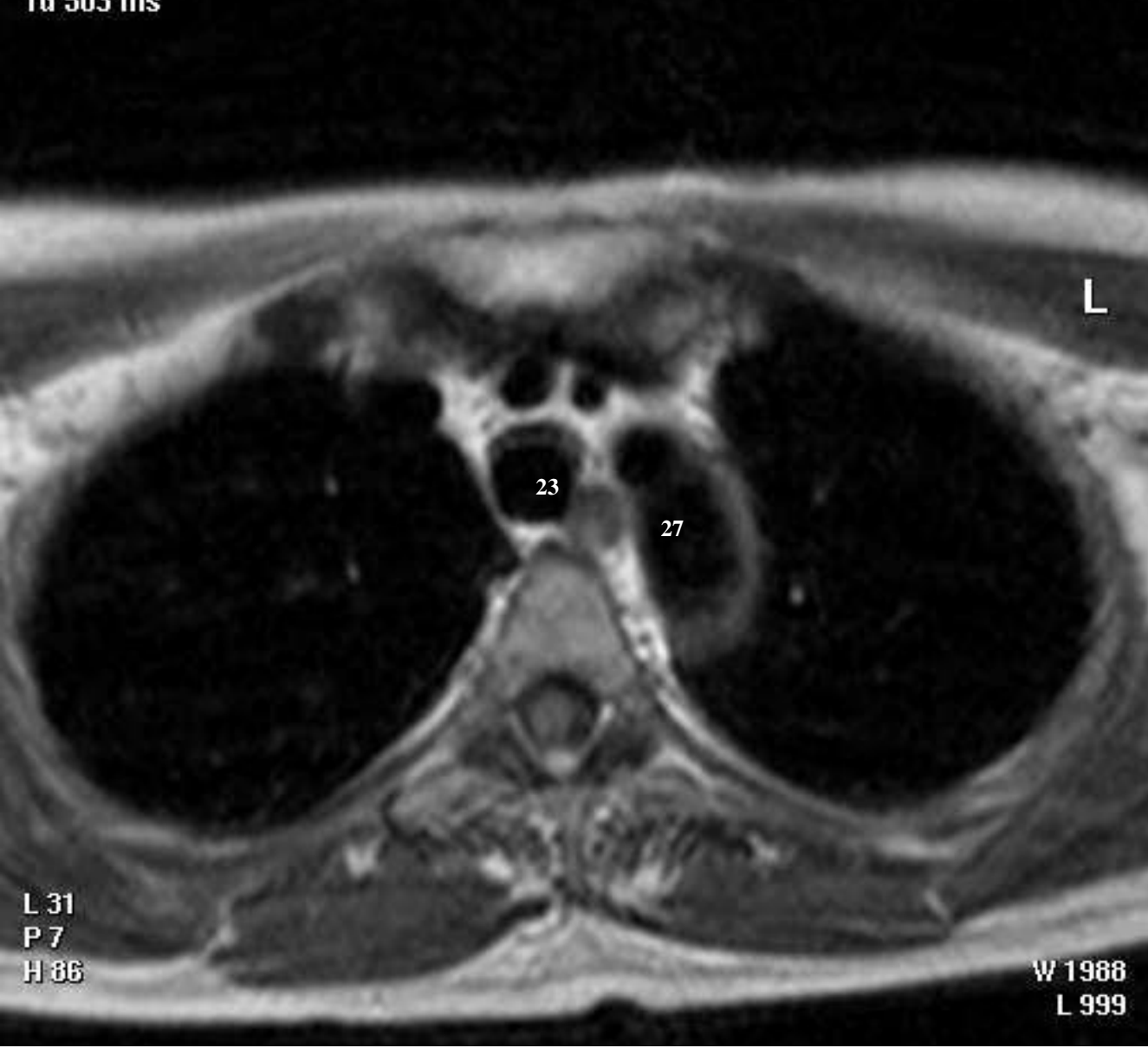
** Trachea

Sc6/17
SEEPI / M
Td 503 ms

< !, ! >

Sc6/16
SEEPI / M
Td 459 ms

< !, ! >



VORIGE SCAN

RECHTER ATRIUM	82
RECHTER VENTRIKEL	86
LINKER ATRIUM	93
LINKER VENTRIKEL	96
TRUNCUS PULMONALIS	91
ARTERIA PULMONALIS	92
AORTA ASCENDENS	102
ARCUS AORTAE	27
AORTA THORACICA	40
VENA CAVA SUPERIOR	34
VENA CAVA INFERIOR	36
VENA PULMONALIS	95

Scan 6/17

** Trachea