

**ONTWORPEN
EN
VERVAARDIGD
DOOR**

**Capaciteitsgroep
Anatomie/
Embryologie
UM**

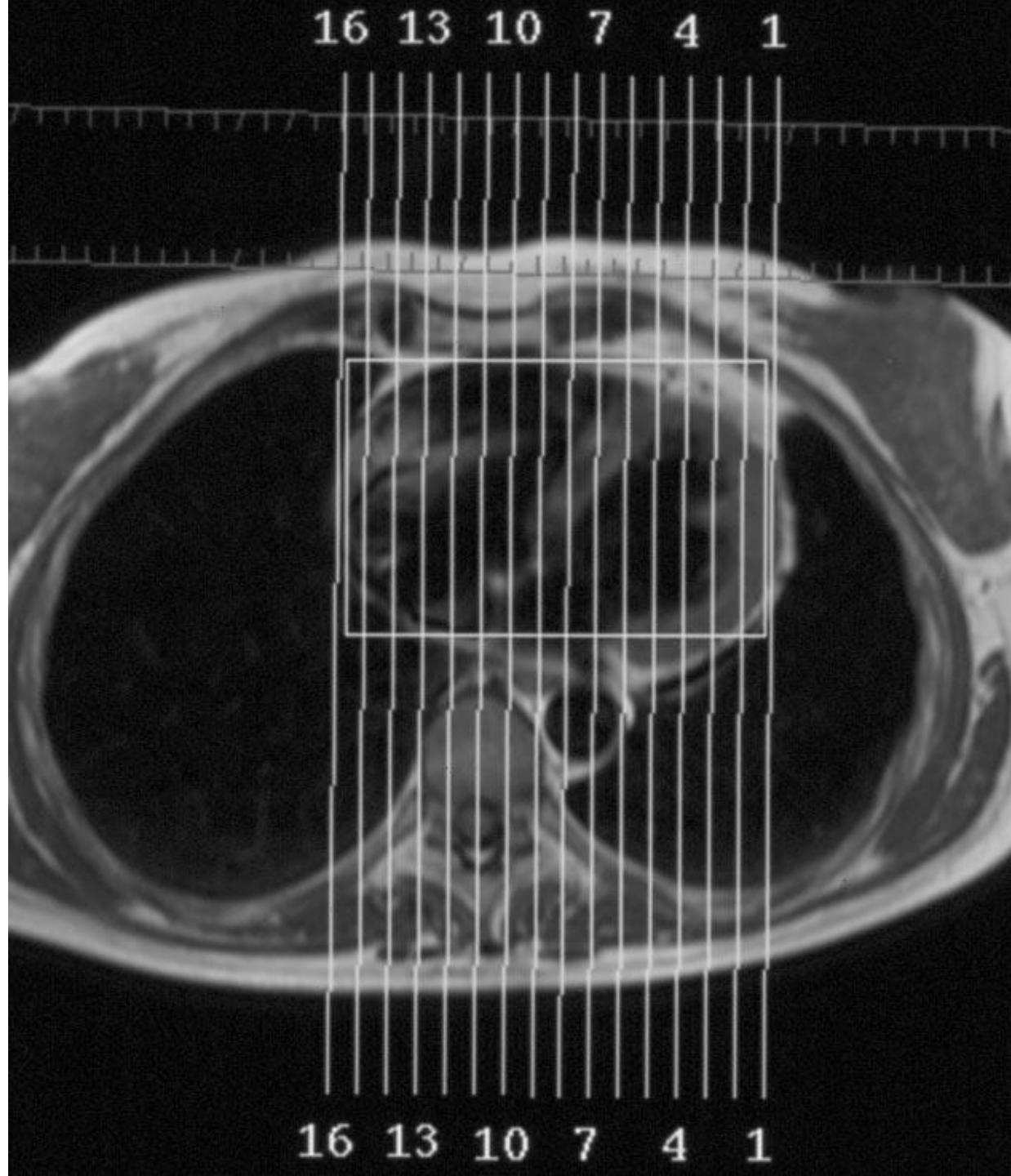
i.s.m.

**Afdeling
Radiologie
AZM**

**J.C. van der Wal
H. van Mameren
G. Snoep**

**januari
2002**

Versie
2004



Sc5/1
TSE / M
Td 600 ms

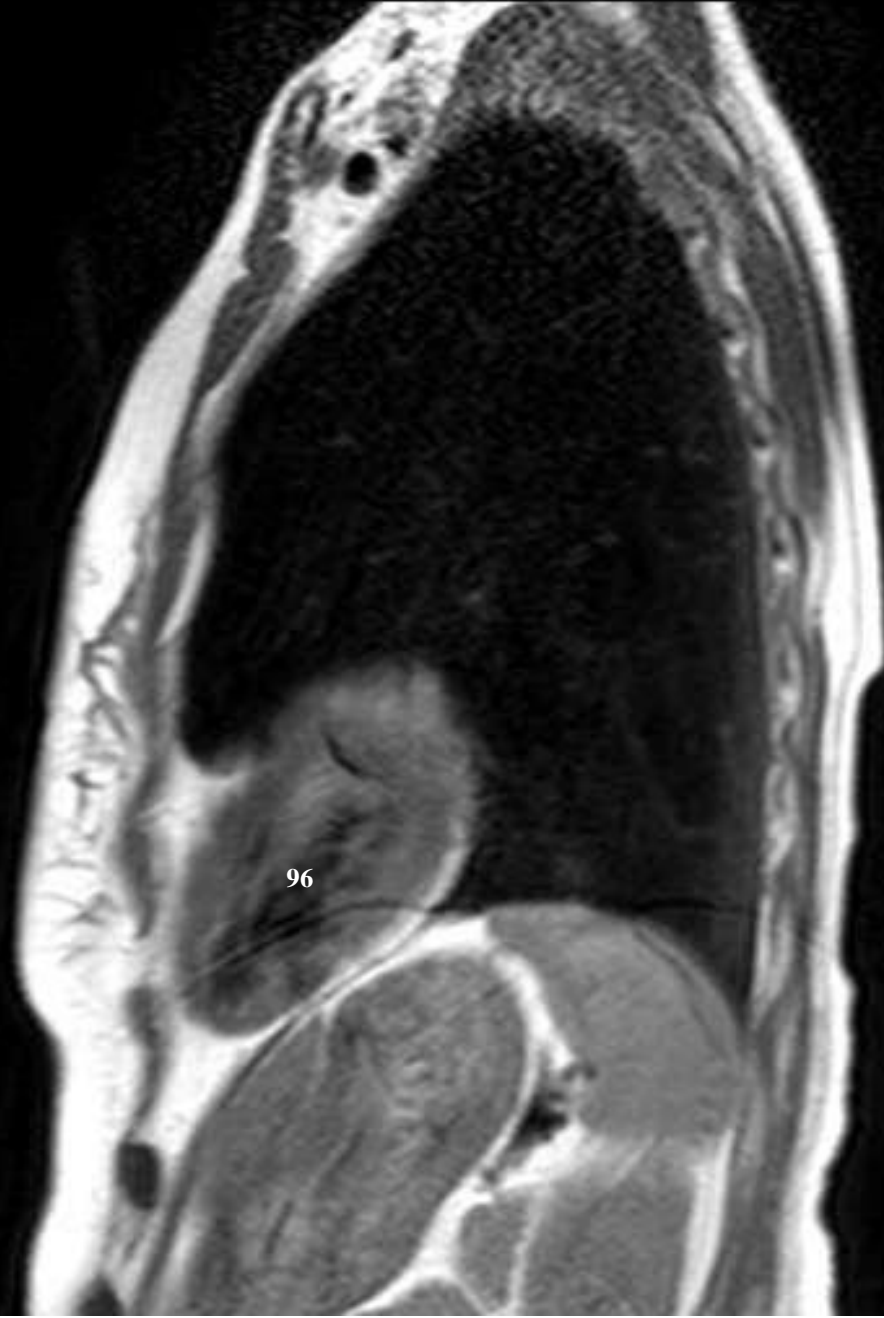


**HIER VERSCHIJNT
STEEDS DE VOOR-
GAANDE SCAN.
IN DEZE SAGIT-
TALE SERIE 1 t/m 16
GAAN DE COUPES
VAN LINKS
NAAR RECHTS**

**VORIGE
SCAN**

RECHTER ATRIUM	82
RECHTER VENTRIKEL	86
LINKER ATRIUM	93
LINKER VENTRIKEL	96
TRUNCUS PULMONALIS	91
ARTERIA PULMONALIS	92
AORTA ASCENDENS	102
ARCUS AORTAE	27
AORTA THORACICA	40
VENA CAVA SUPERIOR	34
VENA CAVA INFERIOR	36
VENA PULMONALIS	95

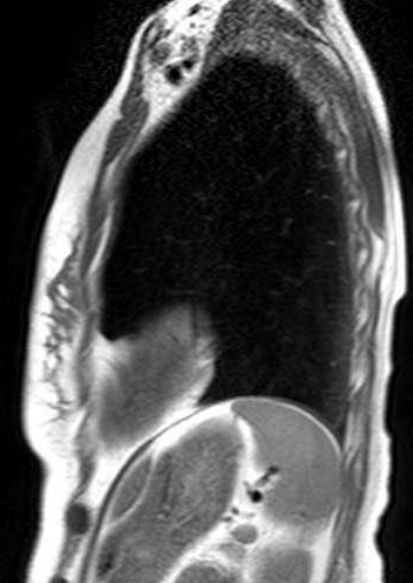
Sc5/2
TSE / M
Td 600 ms



L 97
A 7
F 28

W 1726
L 863

Sc5/1
TSE / M
Td 600 ms



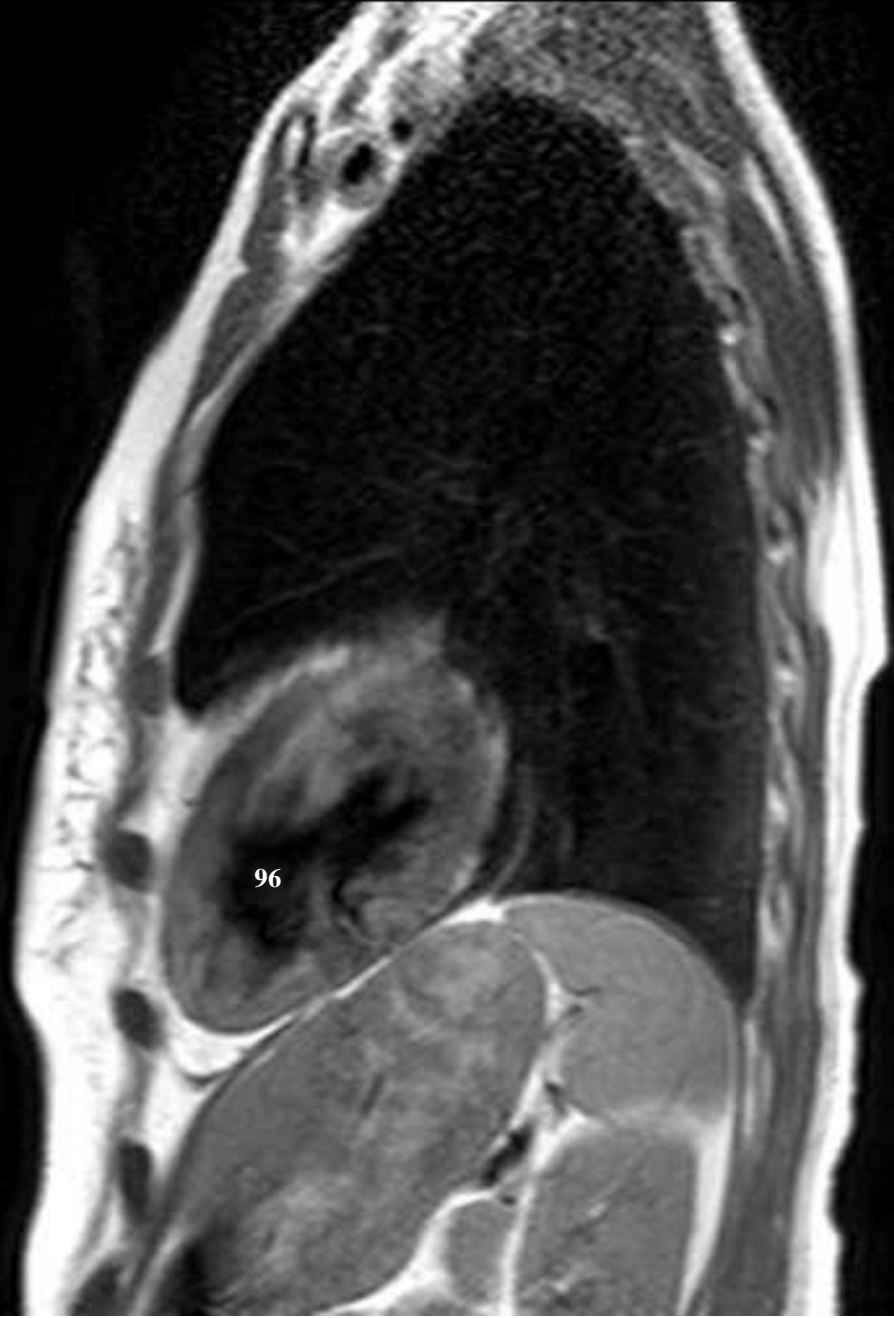
L 105
A 7
F 28

W 1726
L 863

VORIGE SCAN

RECHTER ATRIUM	82
RECHTER VENTRIKEL	86
LINKER ATRIUM	93
LINKER VENTRIKEL	96
TRUNCUS PULMONALIS	91
ARTERIA PULMONALIS	92
AORTA ASCENDENS	102
ARCUS AORTAE	27
AORTA THORACICA	40
VENA CAVA SUPERIOR	34
VENA CAVA INFERIOR	36
VENA PULMONALIS	95

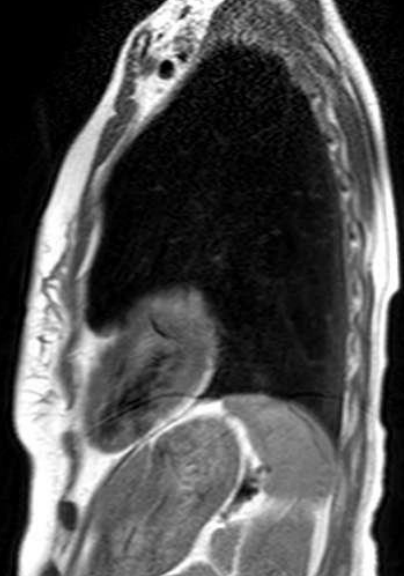
Sc5/3
TSE / M
Td 600 ms



L 89
A 7
F 28

W 1726
L 863

Sc5/2
TSE / M
Td 600 ms



L 97
A 7
F 28

W 1726
L 863

VORIGE SCAN

RECHTER ATRIUM	82
RECHTER VENTRIKEL	86
LINKER ATRIUM	93
LINKER VENTRIKEL	96
TRUNCUS PULMONALIS	91
ARTERIA PULMONALIS	92
AORTA ASCENDENS	102
ARCUS AORTAE	27
AORTA THORACICA	40
VENA CAVA SUPERIOR	34
VENA CAVA INFERIOR	36
VENA PULMONALIS	95

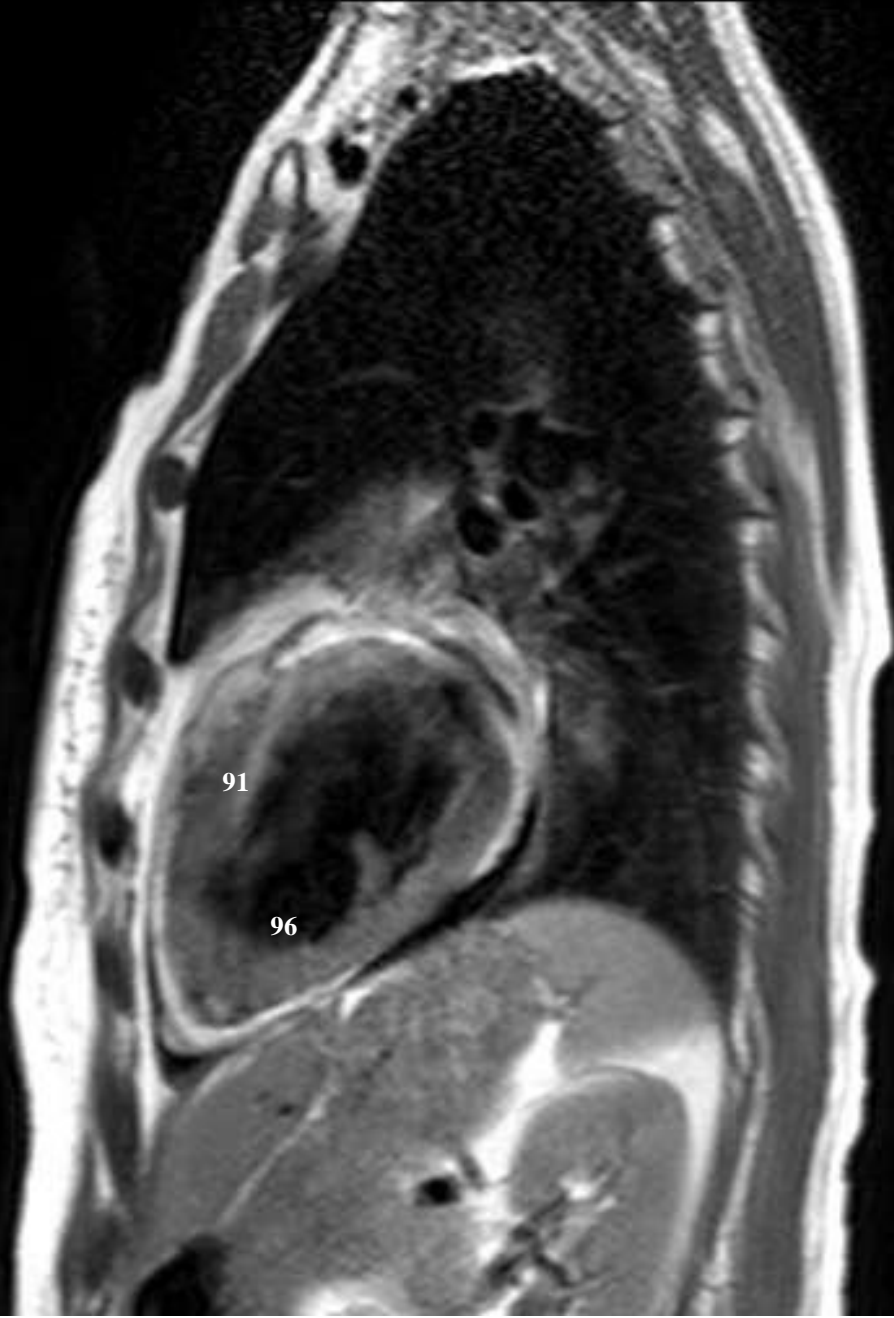
Sc5/4
TSE / M
Td 600 ms



**VORIGE
SCAN**

RECHTER ATRIUM	82
RECHTER VENTRIKEL	86
LINKER ATRIUM	93
LINKER VENTRIKEL	96
TRUNCUS PULMONALIS	91
ARTERIA PULMONALIS	92
AORTA ASCENDENS	102
ARCUS AORTAE	27
AORTA THORACICA	40
VENA CAVA SUPERIOR	34
VENA CAVA INFERIOR	36
VENA PULMONALIS	95

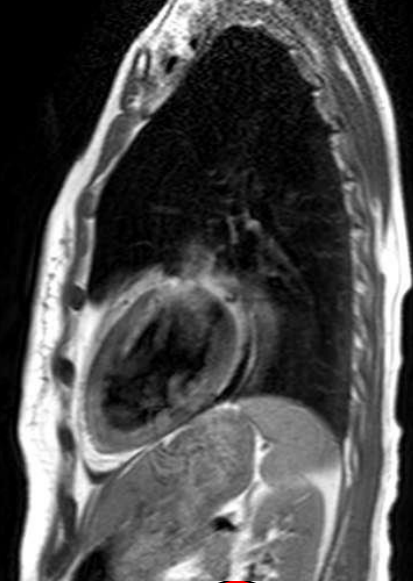
Sc5/5
TSE / M
Td 600 ms



L 74
A 7
F 28

W 1726
L 863

Sc5/4
TSE / M
Td 600 ms



P

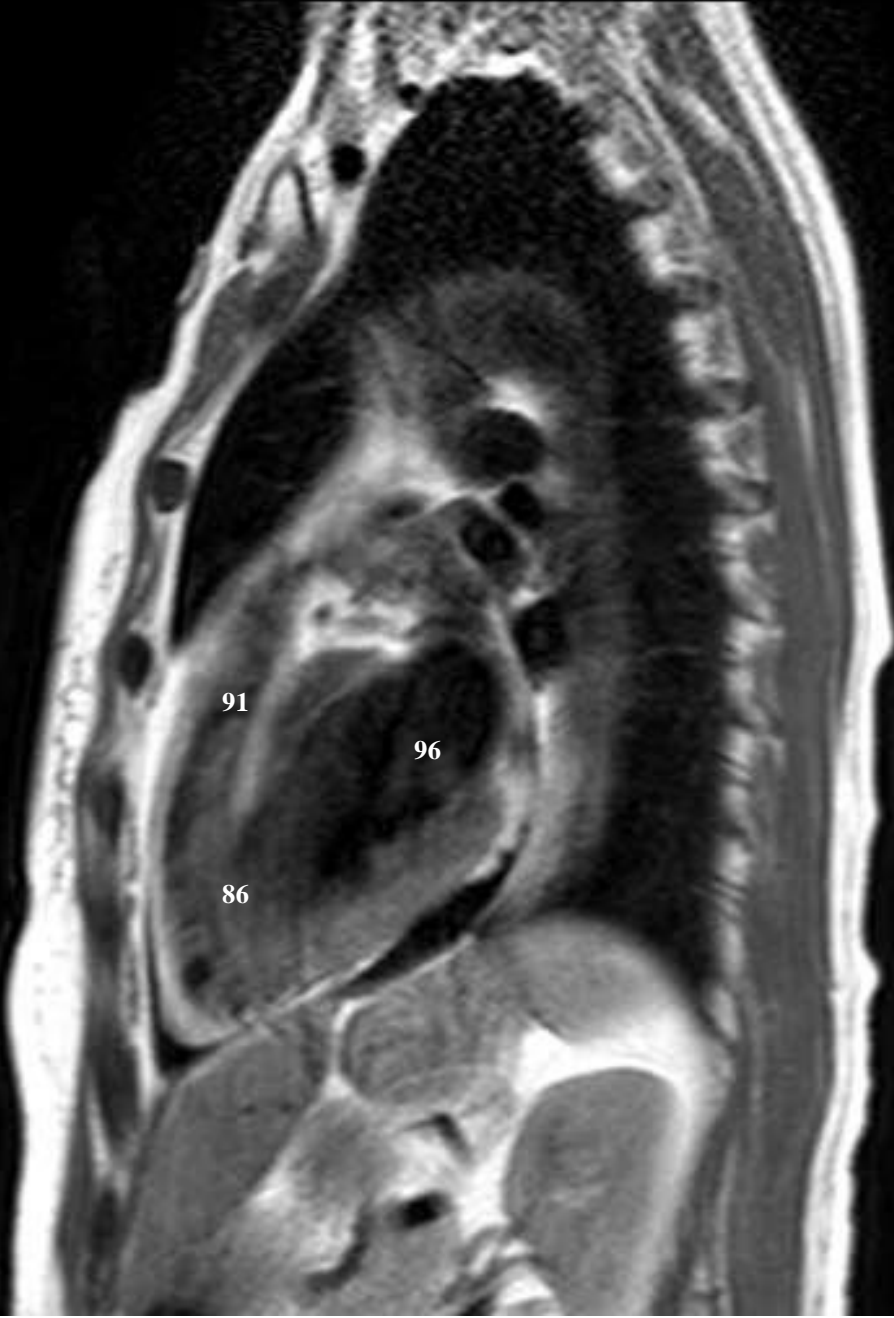
L 82
A 7
F 28

W 1726
L 863

VORIGE SCAN

RECHTER ATRIUM	82
RECHTER VENTRIKEL	86
LINKER ATRIUM	93
LINKER VENTRIKEL	96
TRUNCUS PULMONALIS	91
ARTERIA PULMONALIS	92
AORTA ASCENDENS	102
ARCUS AORTAE	27
AORTA THORACICA	40
VENA CAVA SUPERIOR	34
VENA CAVA INFERIOR	36
VENA PULMONALIS	95

Sc5/6
TSE / M
Td 600 ms



L 66
A 7
F 28

W 1726
L 863

Sc5/6
TSE / M
Td 600 ms



P

P

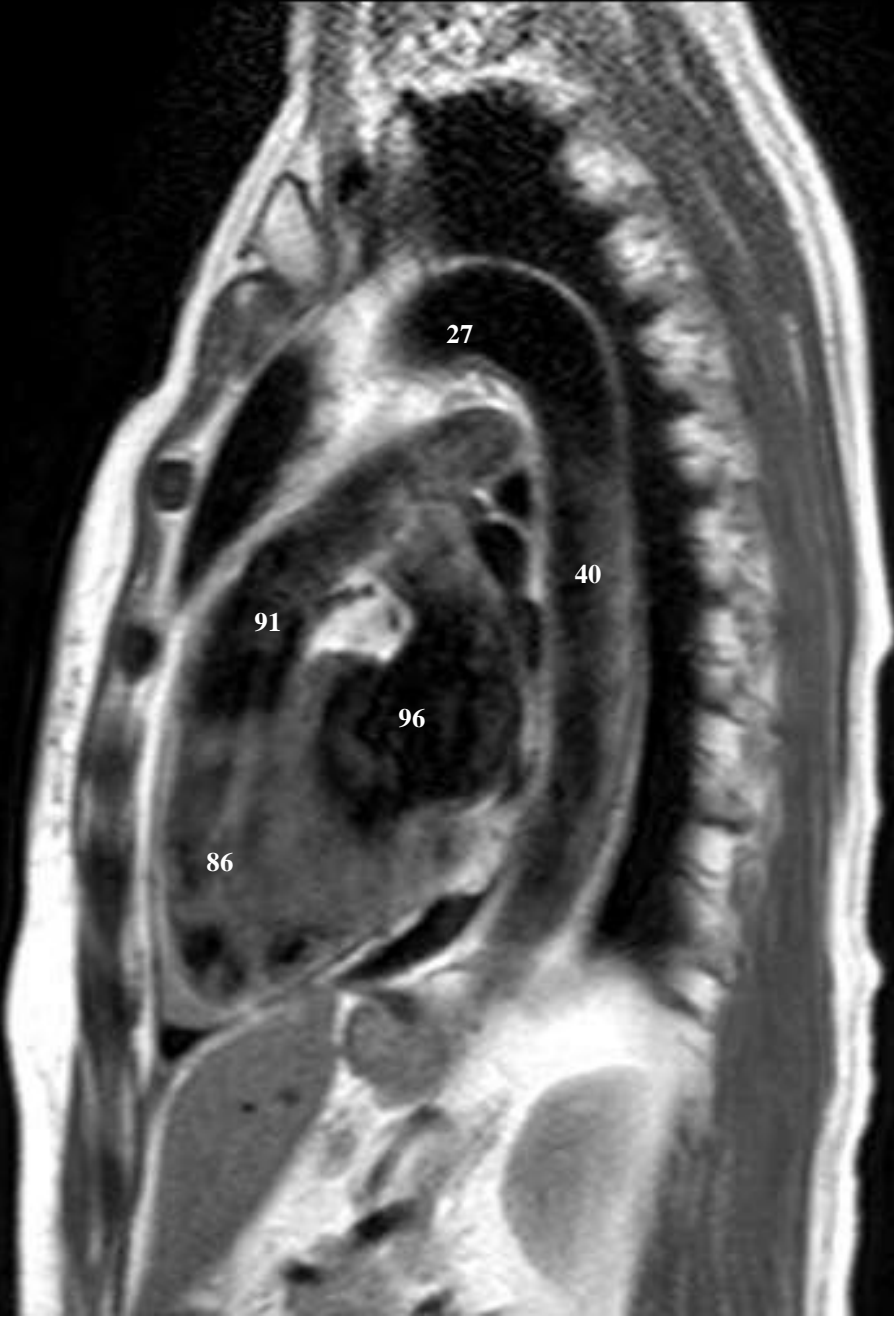
L 74
A 7
F 28

W 1726
L 863

VORIGE SCAN

RECHTER ATRIUM	82
RECHTER VENTRIKEL	86
LINKER ATRIUM	93
LINKER VENTRIKEL	96
TRUNCUS PULMONALIS	91
ARTERIA PULMONALIS	92
AORTA ASCENDENS	102
ARCUS AORTAE	27
AORTA THORACICA	40
VENA CAVA SUPERIOR	34
VENA CAVA INFERIOR	36
VENA PULMONALIS	95

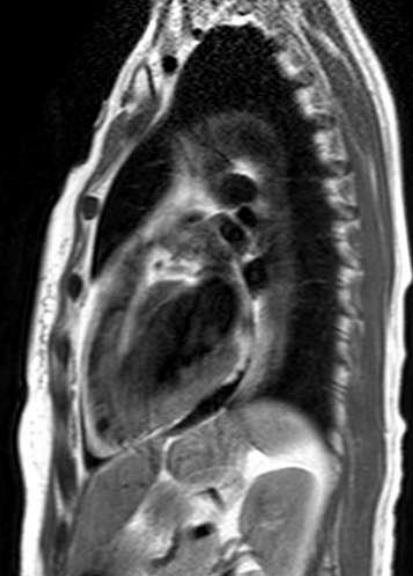
Sc5/7
TSE / M
Td 600 ms



L 59
A 7
F 28

W 1726
L 863

Sc5/6
TSE / M
Td 600 ms



L 66
A 7
F 28

W 1726
L 863

VORIGE SCAN

RECHTER ATRIUM	82
RECHTER VENTRIKEL	86
LINKER ATRIUM	93
LINKER VENTRIKEL	96
TRUNCUS PULMONALIS	91
ARTERIA PULMONALIS	92
AORTA ASCENDENS	102
ARCUS AORTAE	27
AORTA THORACICA	40
VENA CAVA SUPERIOR	34
VENA CAVA INFERIOR	36
VENA PULMONALIS	95

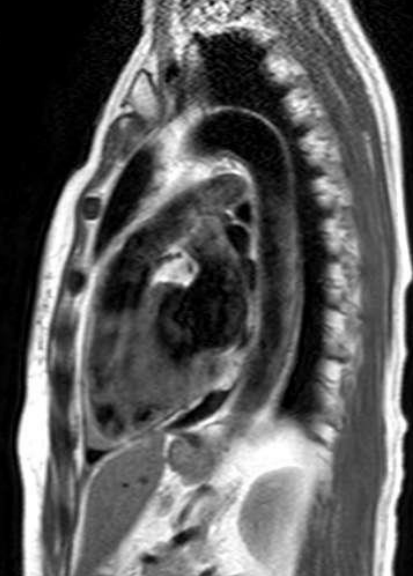
Sc5/8
TSE / M
Td 600 ms



L 51
A 7
F 28

W 1726
L 863

Sc5/7
TSE / M
Td 600 ms



P

L 59
A 7
F 28

W 1726
L 863

VORIGE SCAN

RECHTER ATRIUM	82
RECHTER VENTRIKEL	86
LINKER ATRIUM	93
LINKER VENTRIKEL	96
TRUNCUS PULMONALIS	91
ARTERIA PULMONALIS	92
AORTA ASCENDENS	102
ARCUS AORTAE	27
AORTA THORACICA	40
VENA CAVA SUPERIOR	34
VENA CAVA INFERIOR	36
VENA PULMONALIS	95

Sc5/9
TSE / M
Td 600 ms



Sc5/8
TSE / M
Td 600 ms



VORIGE SCAN

RECHTER ATRIUM	82
RECHTER VENTRIKEL	86
LINKER ATRIUM	93
LINKER VENTRIKEL	96
TRUNCUS PULMONALIS	91
ARTERIA PULMONALIS	92
AORTA ASCENDENS	102
ARCUS AORTAE	27
AORTA THORACICA	40
VENA CAVA SUPERIOR	34
VENA CAVA INFERIOR	36
VENA PULMONALIS	95

Sc5/10
TSE / M
Td 600 ms

Sc5/9
TSE / M
Td 600 ms



L 43
A 7
F 28

W 1726
L 863

L 35
A 7
F 28

W 1726
L 863

VORIGE SCAN

RECHTER ATRIUM	82
RECHTER VENTRIKEL	86
LINKER ATRIUM	93
LINKER VENTRIKEL	96
TRUNCUS PULMONALIS	91
ARTERIA PULMONALIS	92
AORTA ASCENDENS	102
ARCUS AORTAE	27
AORTA THORACICA	40
VENA CAVA SUPERIOR	34
VENA CAVA INFERIOR	36
VENA PULMONALIS	95

Sc5/11
TSE / M
Td 600 ms

Sc5/10
TSE / M
Td 600 ms



VORIGE SCAN

RECHTER ATRIUM	82
RECHTER VENTRIKEL	86
LINKER ATRIUM	93
LINKER VENTRIKEL	96
TRUNCUS PULMONALIS	91
ARTERIA PULMONALIS	92
AORTA ASCENDENS	102
ARCUS AORTAE	27
AORTA THORACICA	40
VENA CAVA SUPERIOR	34
VENA CAVA INFERIOR	36
VENA PULMONALIS	95

L 28
A 7
F 28

W 1726
L 863

Sc5/12
TSE / M
Td 600 ms



Sc5/11
TSE / M
Td 600 ms



VORIGE SCAN

RECHTER ATRIUM	82
RECHTER VENTRIKEL	86
LINKER ATRIUM	93
LINKER VENTRIKEL	96
TRUNCUS PULMONALIS	91
ARTERIA PULMONALIS	92
AORTA ASCENDENS	102
ARCUS AORTAE	27
AORTA THORACICA	40
VENA CAVA SUPERIOR	34
VENA CAVA INFERIOR	36
VENA PULMONALIS	95

Sc5/13
TSE / M
Td 600 ms



Sc5/12
TSE / M
Td 600 ms



VORIGE SCAN

RECHTER ATRIUM	82
RECHTER VENTRIKEL	86
LINKER ATRIUM	93
LINKER VENTRIKEL	96
TRUNCUS PULMONALIS	91
ARTERIA PULMONALIS	92
AORTA ASCENDENS	102
ARCUS AORTAE	27
AORTA THORACICA	40
VENA CAVA SUPERIOR	34
VENA CAVA INFERIOR	36
VENA PULMONALIS	95

Sc5/14
TSE / M
Td 600 ms



Sc5/13
TSE / M
Td 600 ms



VORIGE SCAN

RECHTER ATRIUM	82
RECHTER VENTRIKEL	86
LINKER ATRIUM	93
LINKER VENTRIKEL	96
TRUNCUS PULMONALIS	91
ARTERIA PULMONALIS	92
AORTA ASCENDENS	102
ARCUS AORTAE	27
AORTA THORACICA	40
VENA CAVA SUPERIOR	34
VENA CAVA INFERIOR	36
VENA PULMONALIS	95

Sc5/15
TSE / M
Td 600 ms



R 3
A 8
F 28

W 1726
L 863

Sc5/14
TSE / M
Td 600 ms



L 5
A 8
F 28

W 1726
L 863

VORIGE SCAN

RECHTER ATRIUM	82
RECHTER VENTRIKEL	86
LINKER ATRIUM	93
LINKER VENTRIKEL	96
TRUNCUS PULMONALIS	91
ARTERIA PULMONALIS	92
AORTA ASCENDENS	102
ARCUS AORTAE	27
AORTA THORACICA	40
VENA CAVA SUPERIOR	34
VENA CAVA INFERIOR	36
VENA PULMONALIS	95

Sc5/16
TSE / M
Td 600 ms

R 11
A 8
F 28

W 1931
L 966

Sc5/15
TSE / M
Td 600 ms

R 3
A 8
F 28

W 1726
L 863

VORIGE SCAN

RECHTER ATRIUM	82
RECHTER VENTRIKEL	86
LINKER ATRIUM	93
LINKER VENTRIKEL	96
TRUNCUS PULMONALIS	91
ARTERIA PULMONALIS	92
AORTA ASCENDENS	102
ARCUS AORTAE	27
AORTA THORACICA	40
VENA CAVA SUPERIOR	34
VENA CAVA INFERIOR	36
VENA PULMONALIS	95