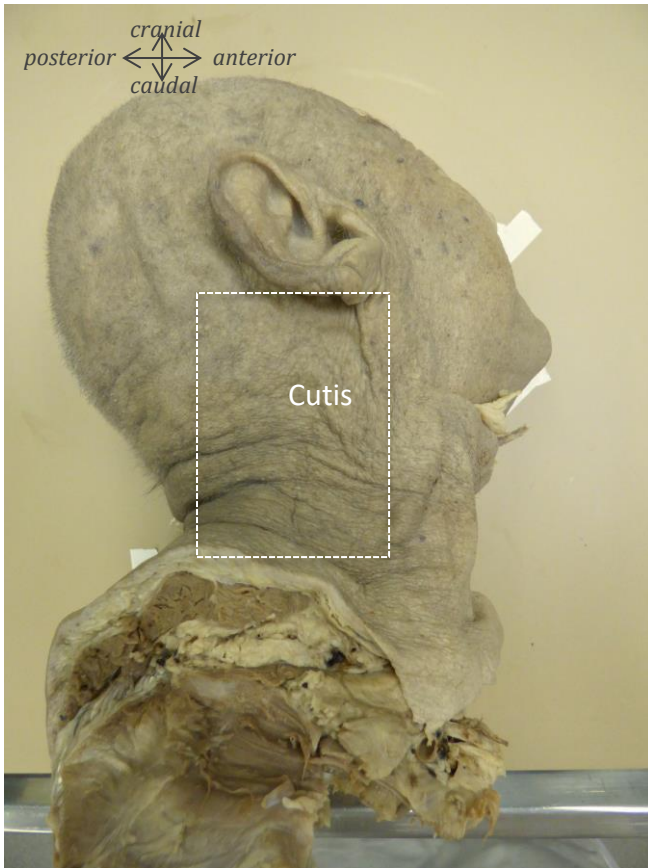


A dorsolateral dissection of the cervical neck

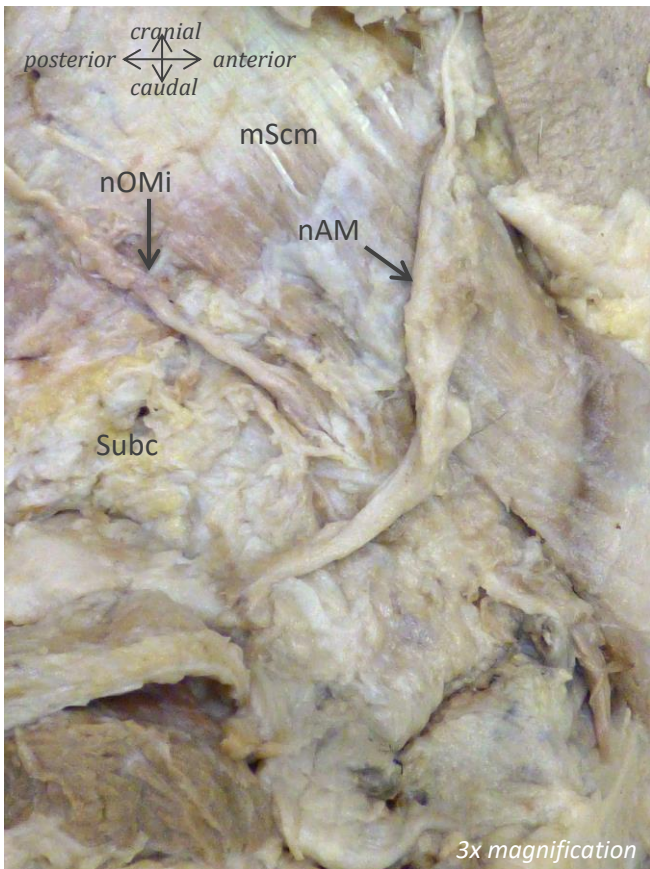
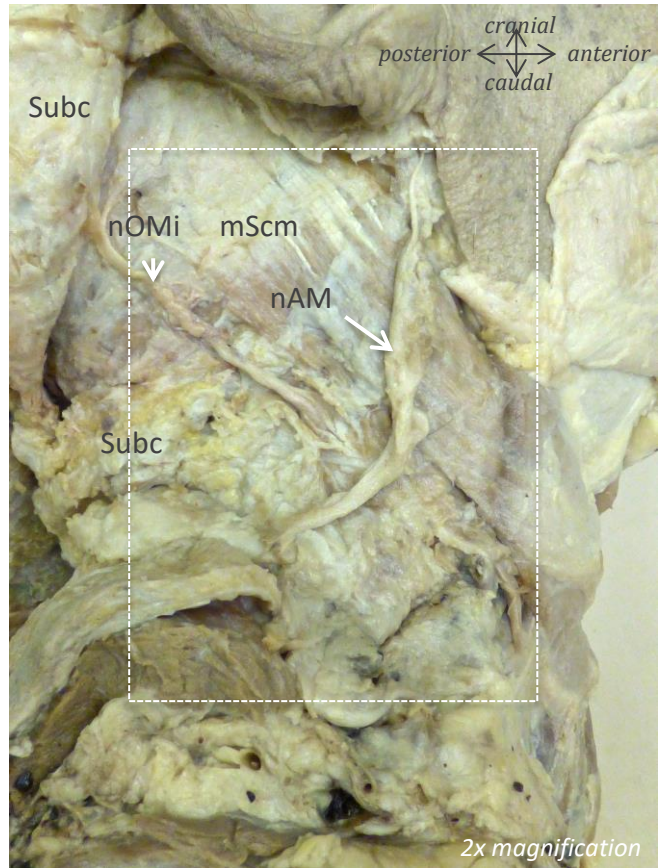
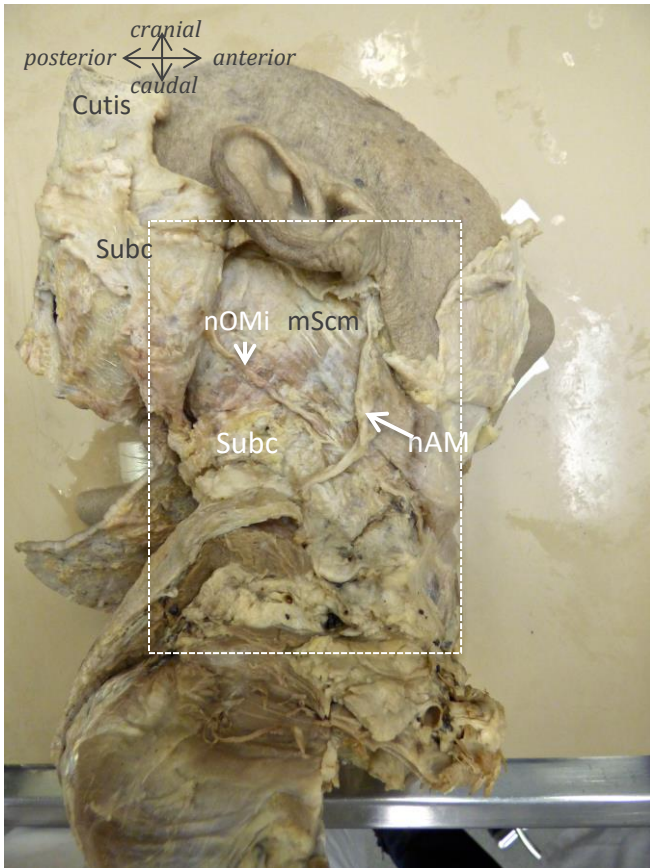
*dissection from skin to facet joints of the
cervical region, documented stepwise by high
resolution pictures with all relevant structures
labeled*

*Fabian Büsken, Noëlle Dirks, Andreas Herrler, Arno
Lataster
Department of Anatomy & Embryology
FHML, Maastricht University
The Netherlands*



Extra: Subc = subcutis

Male, 86 years of age



Muscles

mScm = m. sternocleidomastoideus

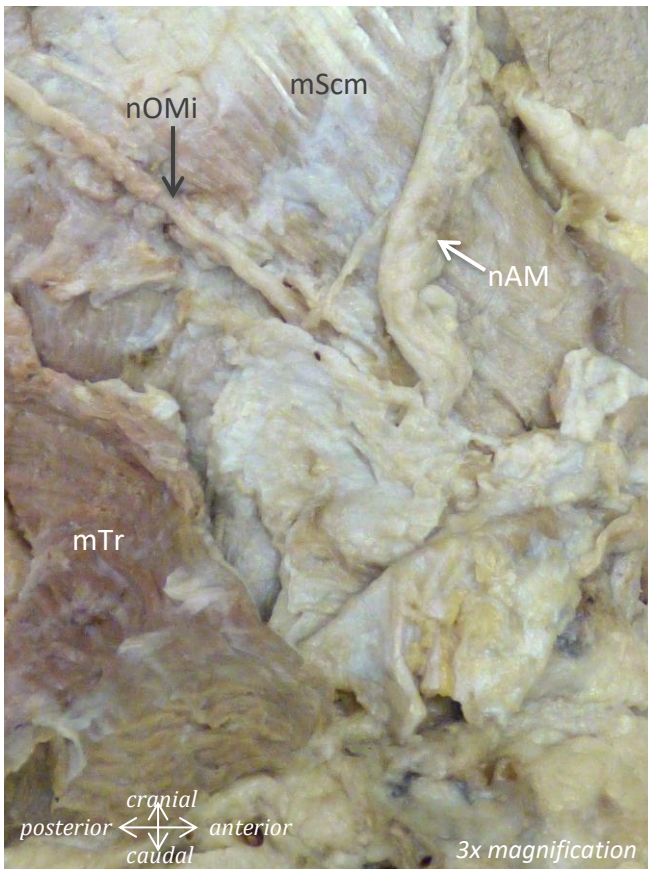
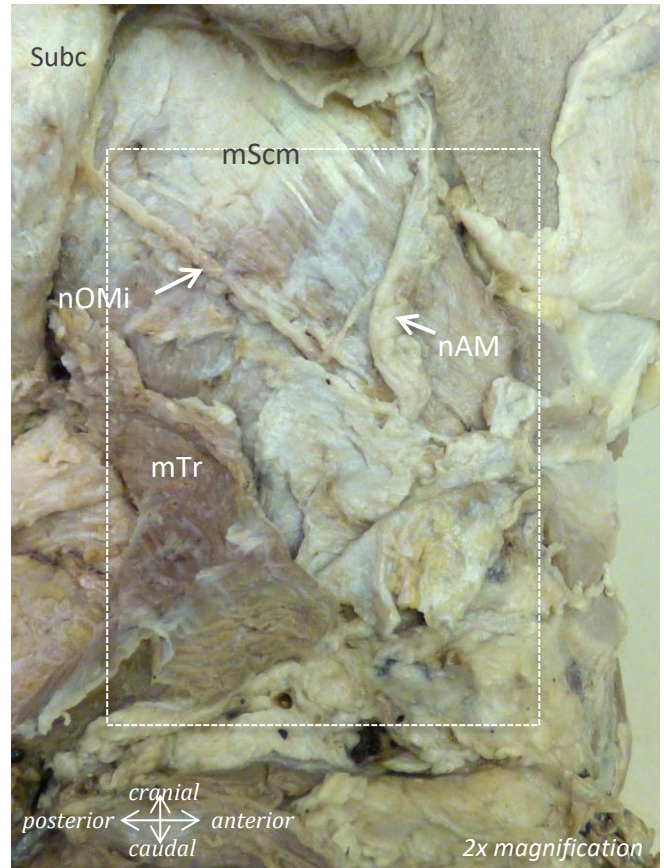
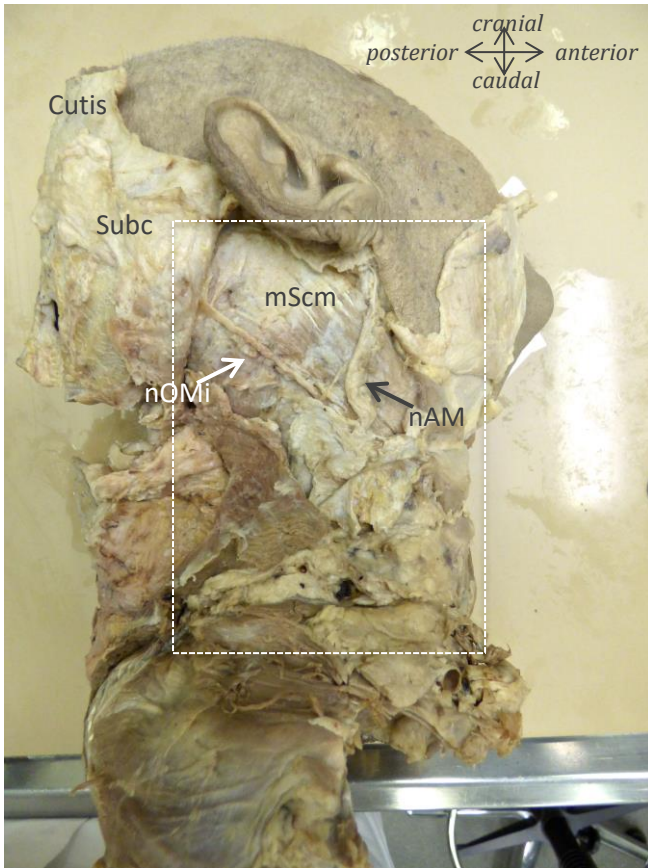
Nerves

nAM = n. auricularis magnus

nOMi = n. occipitalis minor

Extra

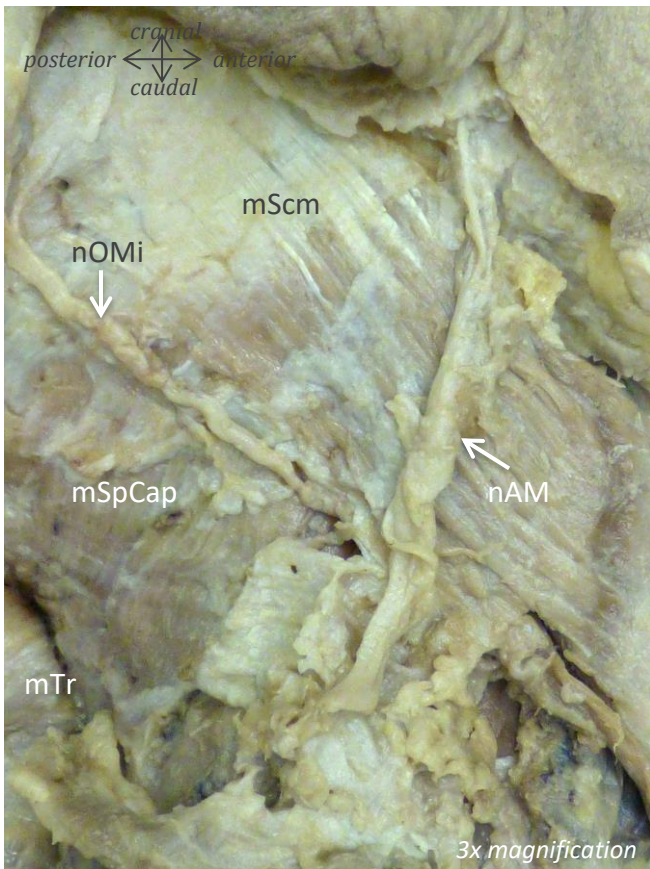
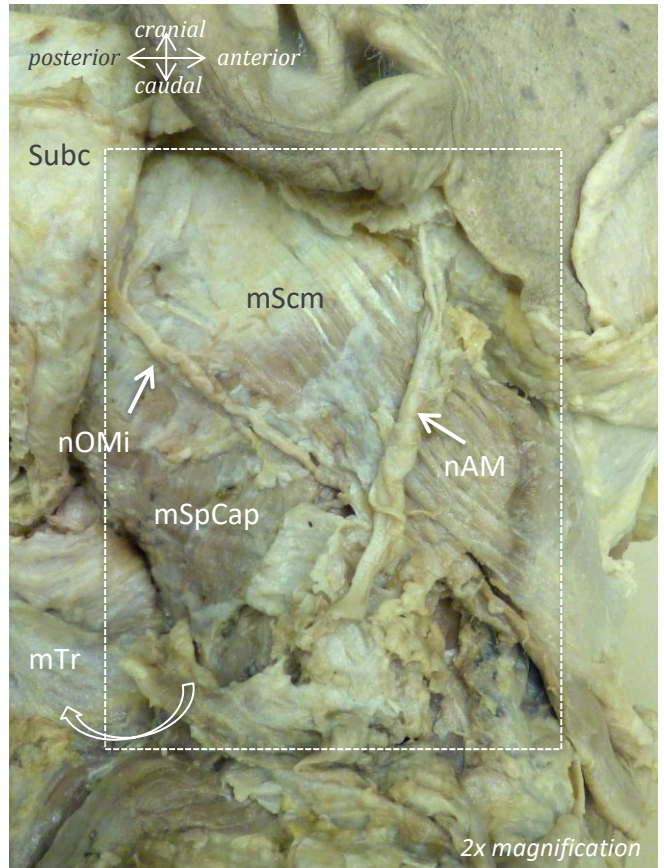
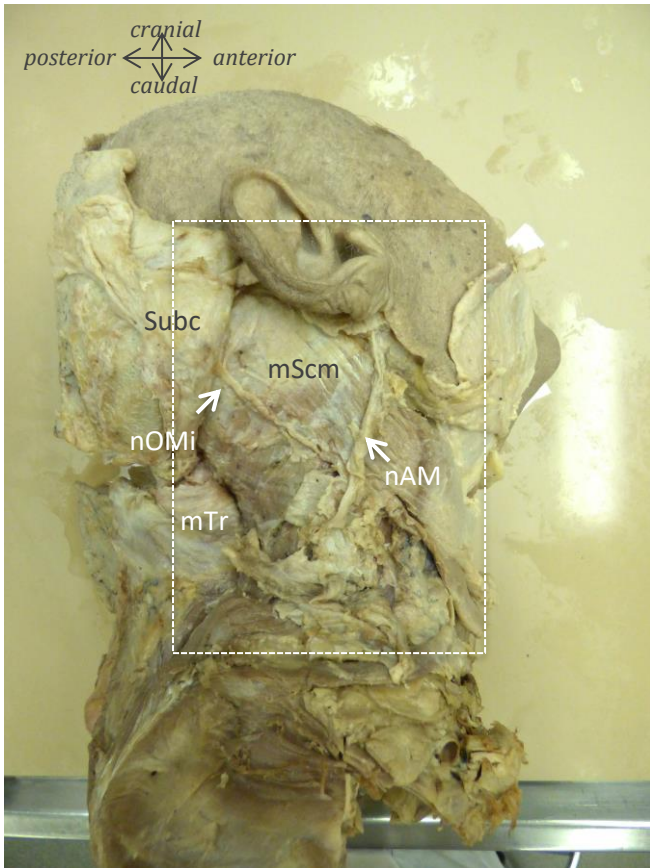
Subc = subcutis



Muscles
 mScm = m. sternocleidomastoideus
 mTr = m. trapezius

Nerves
 nAM = n. auricularis magnus
 nOMi = n. occipitalis minor

Extra
 Subc = subcutis



Muscles

mScm = m. sternocleidomastoideus

mSpCap = m. spinalis capitis

mTr = m. trapezius

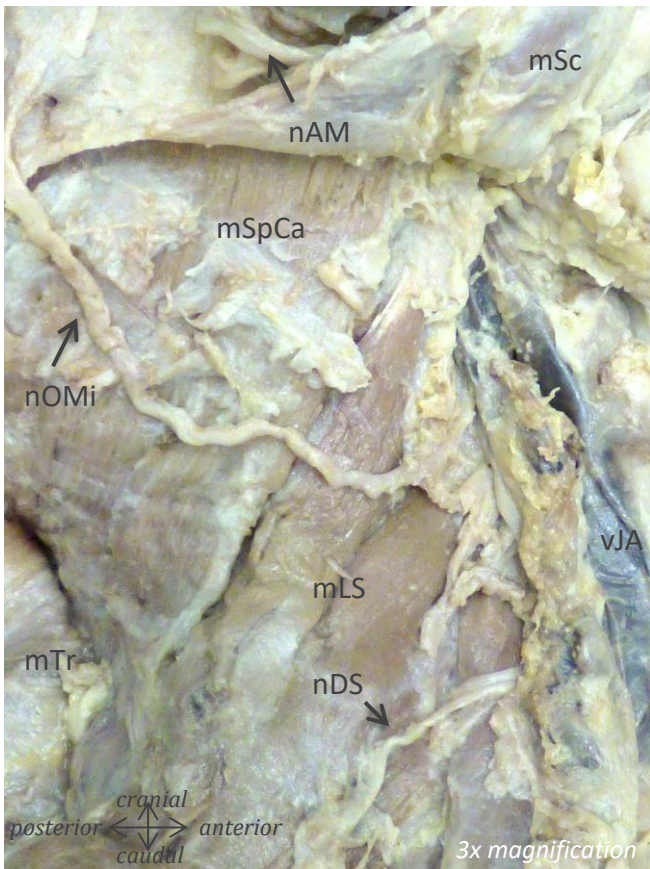
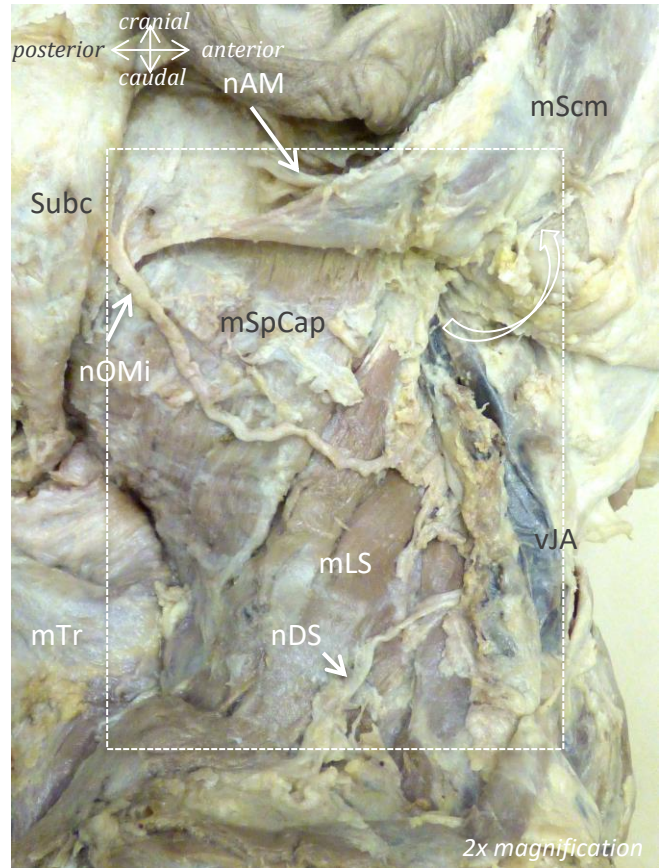
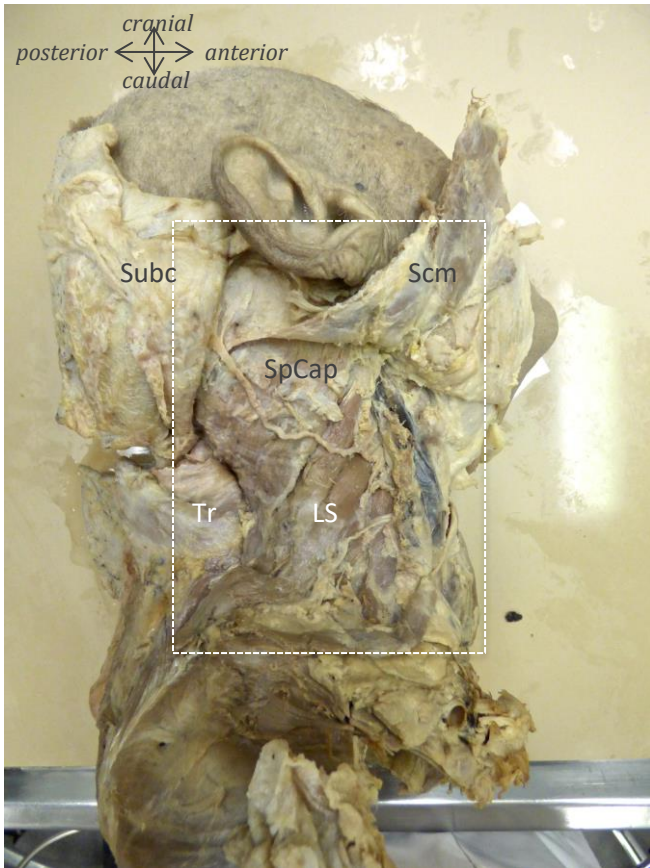
Nerves

nAM = n. auricularis magnus

nOMi = n. occipitalis minor

Extra

Subc = subcutis (folded)



Muscles

- mScm = m. sternocleidomastoideus (folded)
- mSpCap = m. spinalis capitis
- mLS = m. levator scapulae
- mTr = m. trapezius

Nerves

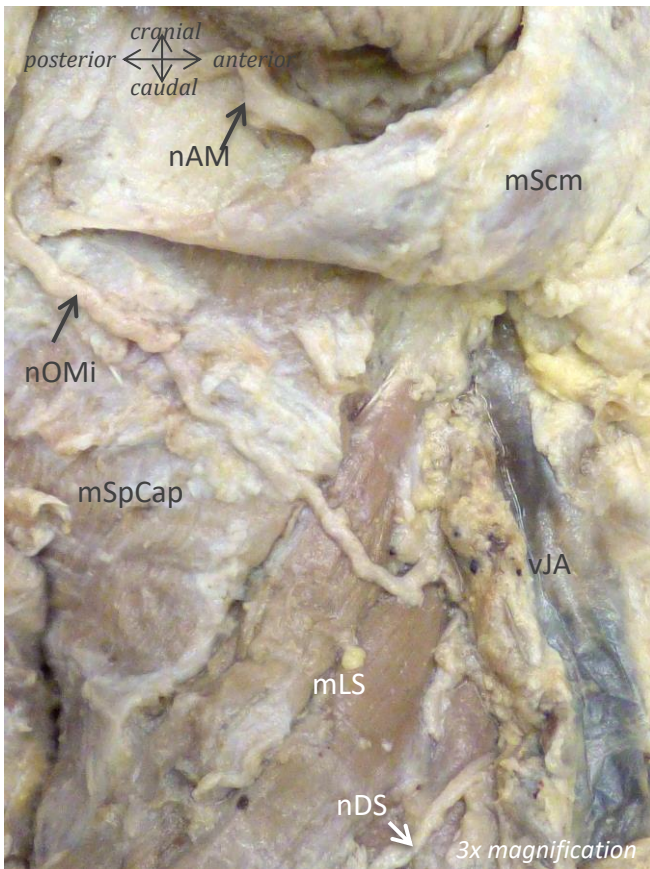
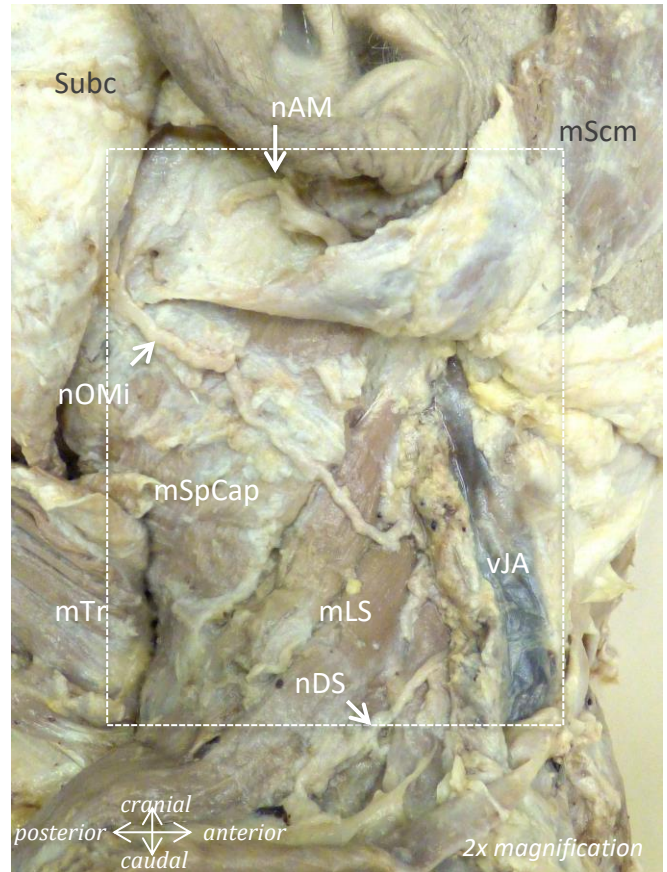
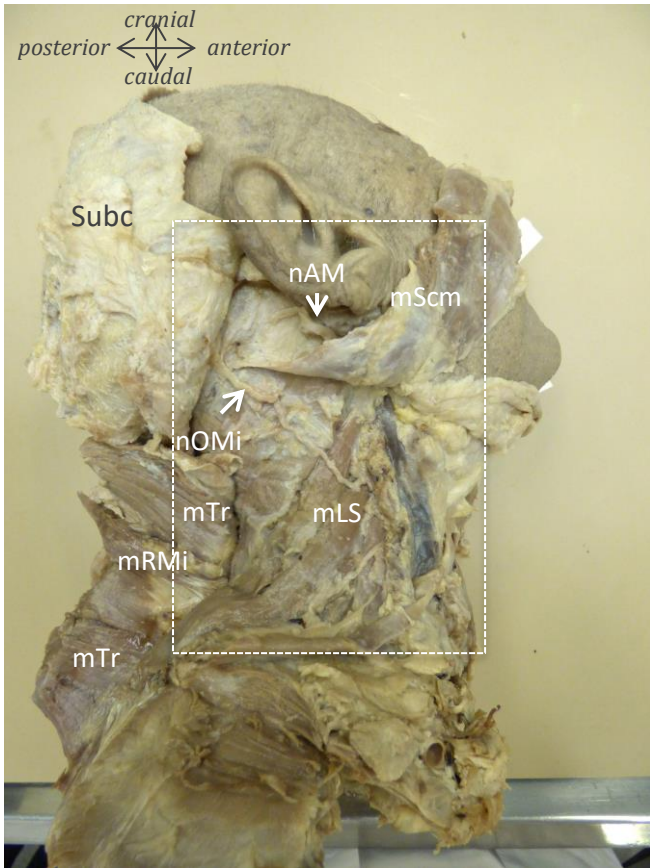
- nAM = n. auricularis magnus
- nOMi = n. occipitalis minor
- nDS = n. dorsalis scapulae

Vessels

- vJl = v. jugularis anterior

Extra

- Subc = subcutis (folded)



Muscles

- mScm = m. sternocleidomastoideus (folded)
- mSpCap = m. spinalis capitis
- mLS = m. levator scapulae
- mTr = m. trapezius (folded)
- mRMi = m. rhomboideus minor (folded)

Nerves

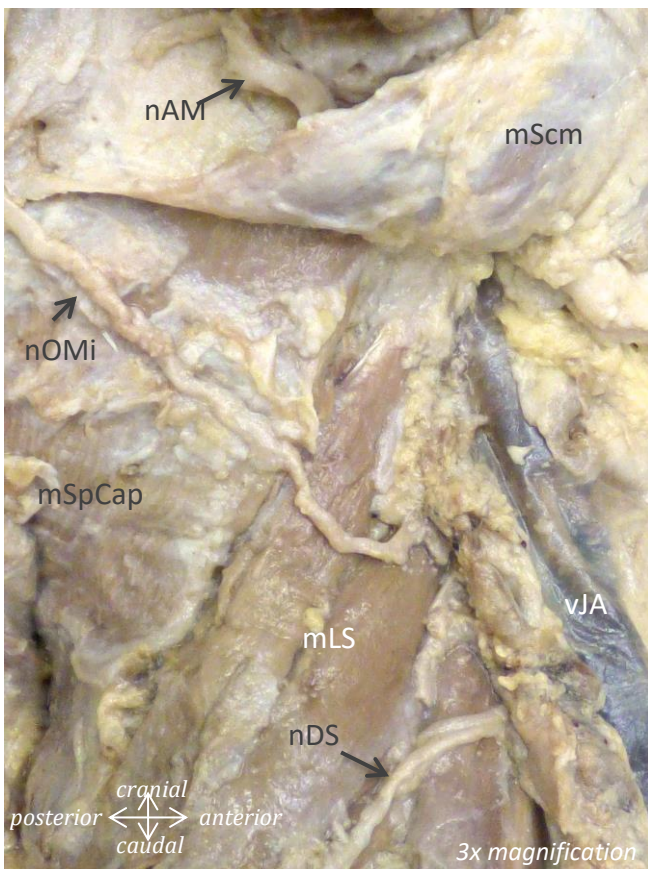
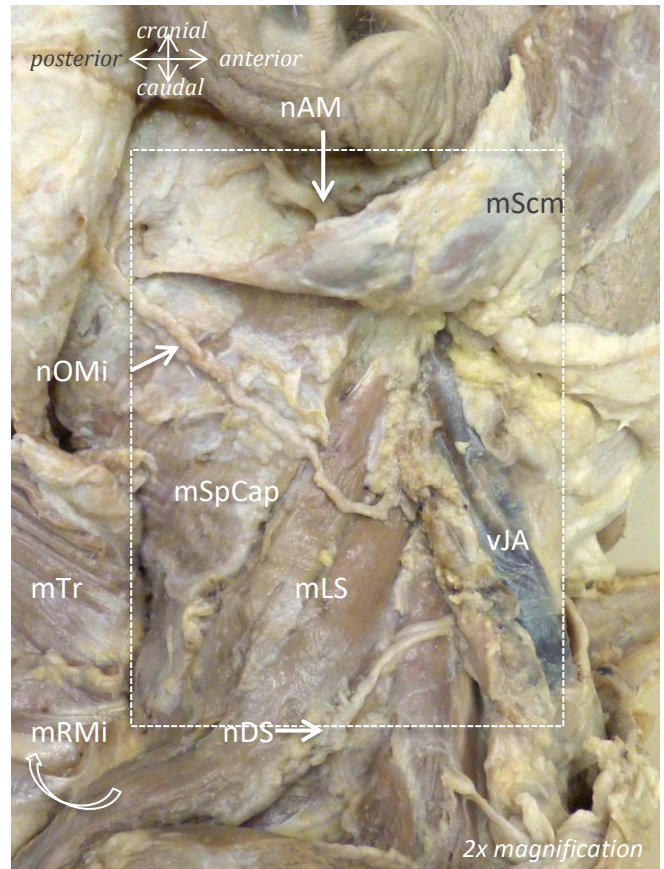
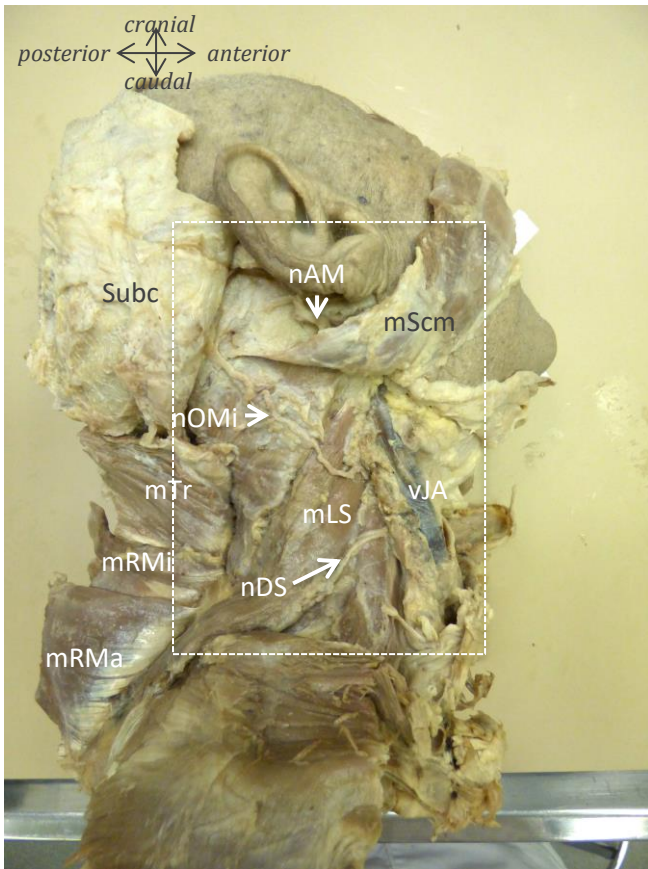
- nAM = n. auricularis magnus
- nOMi = n. occipitalis minor
- nDS = n. dorsalis scapulae

Vessels

- vJA = v. Jugularis anterior

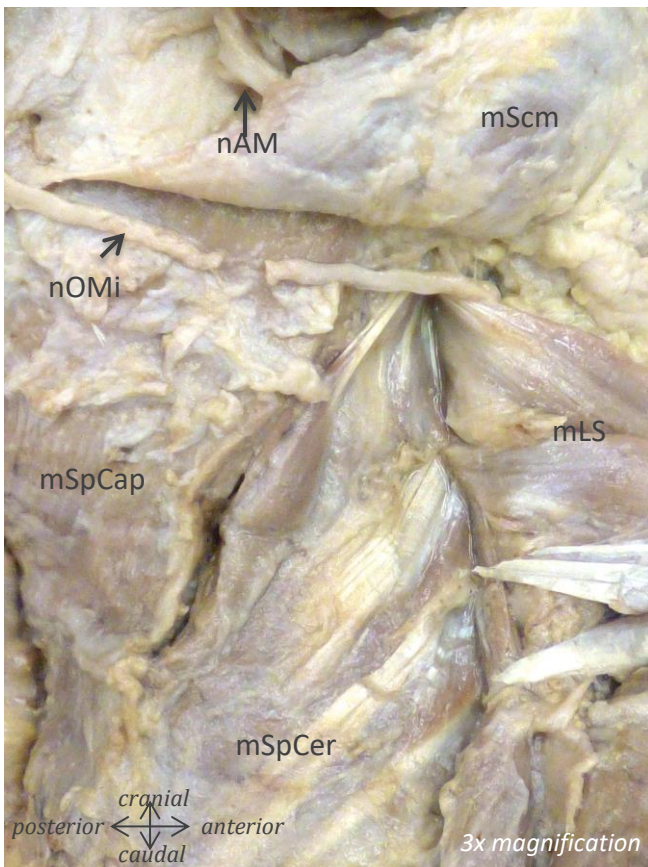
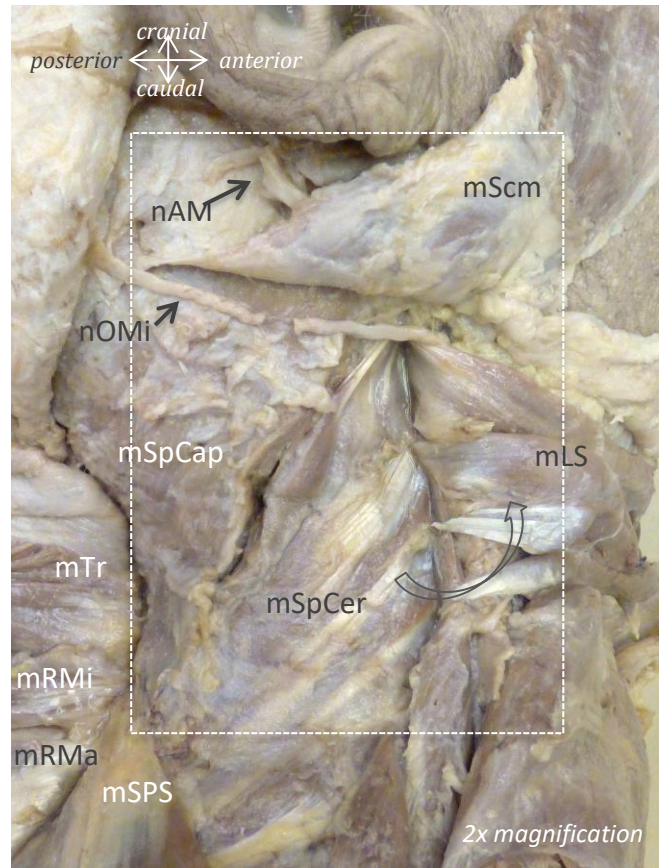
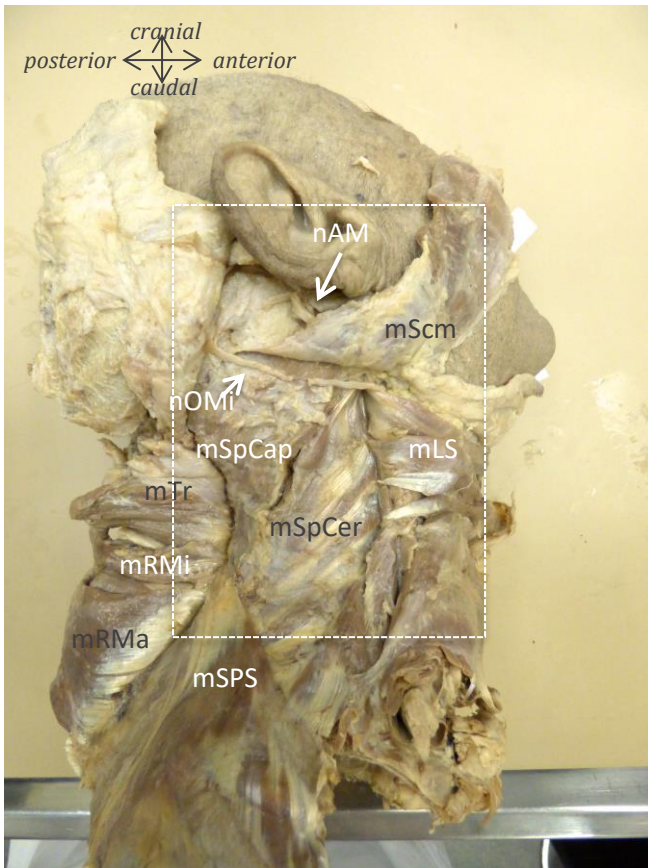
Extra

- Subc = subcutis



- Muscles**
 mScm = m. sternocleidomastoideus (folded)
 mSpCap = m. spinalis capitis
 mLS = m. levator scapulae
 mTr = m. trapezius (folded)
 mRMI = m. rhomboideus minor (folded)
 mRMA = m. rhomboideus major (folded)
- Nerves**
 nAM = n. auricularis magnus
 nOMi = n. occipitalis minor
 nDS = n. dorsalis scapulae
- Vessels**
 vJA = v. jugularis anterior

Male, 86 years of age

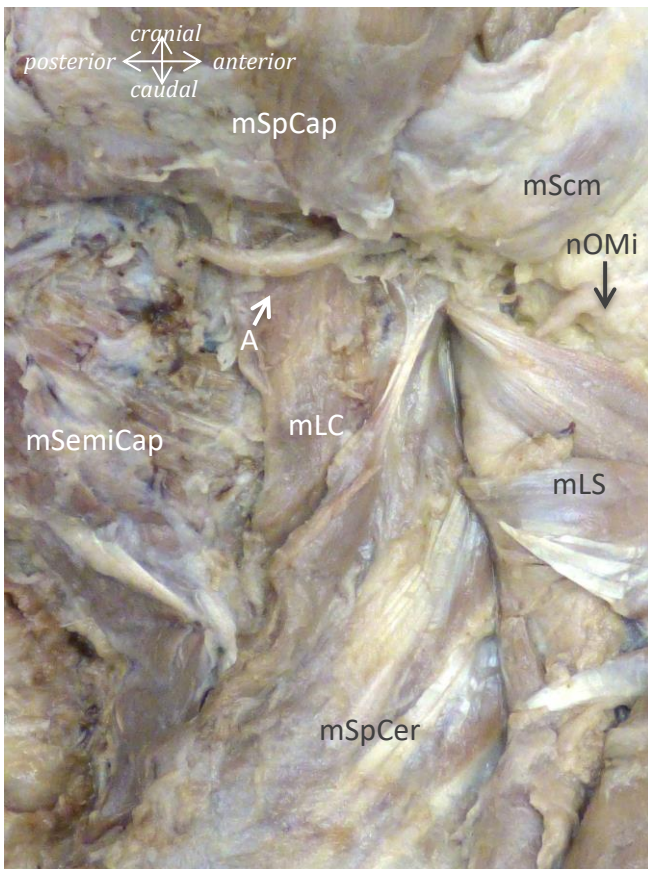
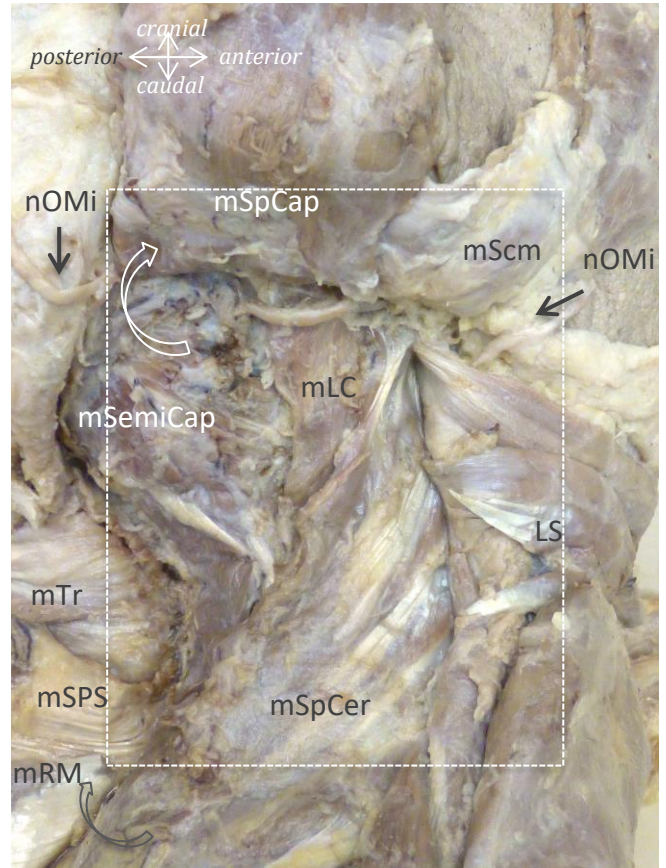
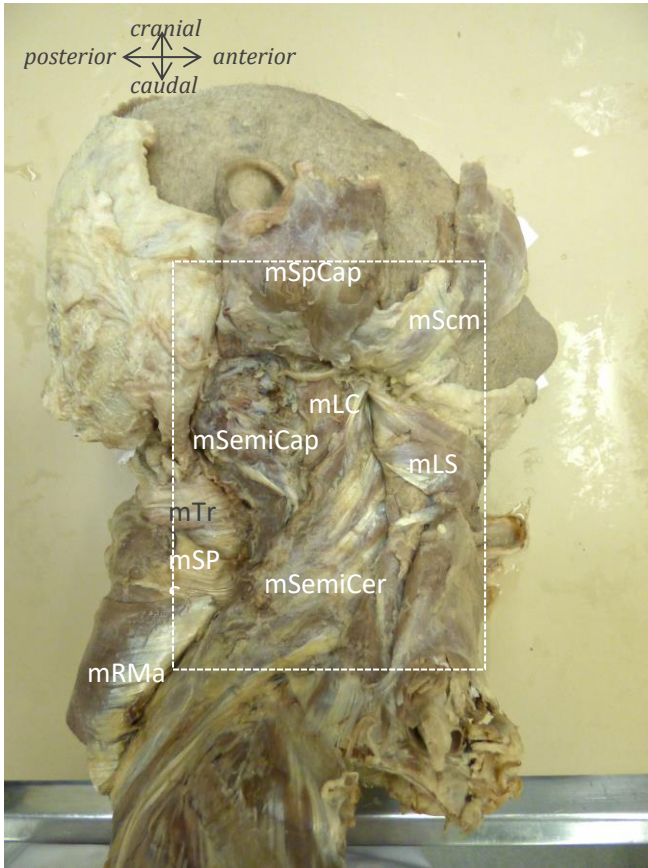


Muscles

- mScm = m. sternocleidomastoideus (folded)
- mSpCap = m. spinalis capitis
- mSpCer = m. spinalis cervicis
- mLS = m. levator scapulae (folded)
- mTr = m. trapezius (folded)
- mRMI = m. rhomboideus minor (folded)
- mRMa = m. rhomboideus major (folded)
- mSPS = m. serratus posterior superior

Nerves

- nAM = n. auricularis magnus
- nOMi = n. occipitalis minor



Muscles

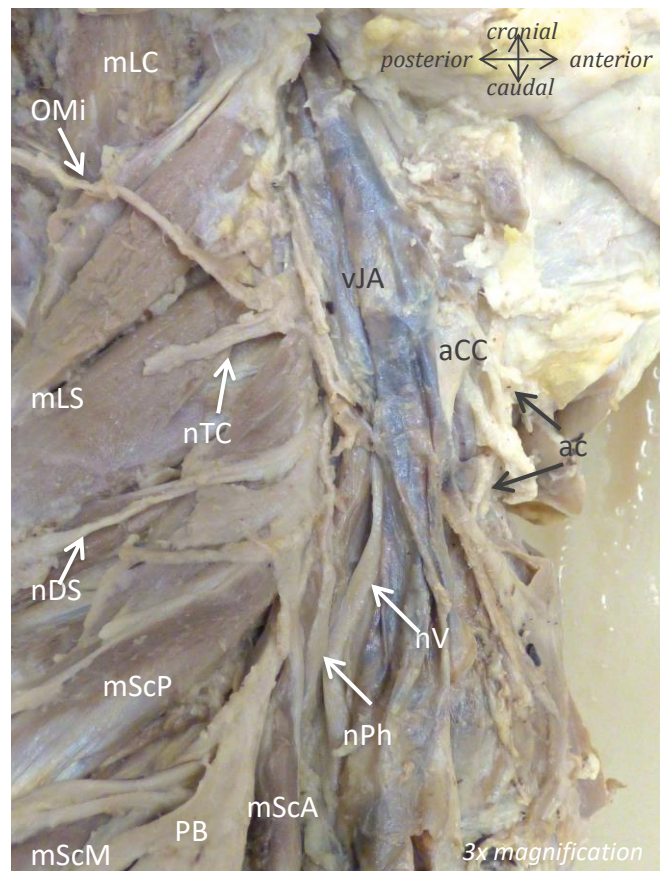
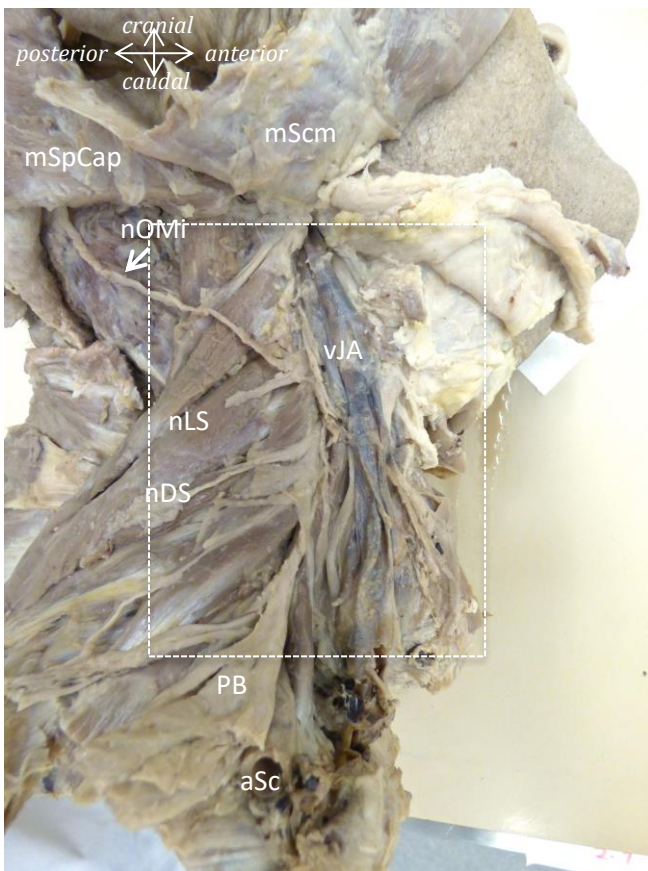
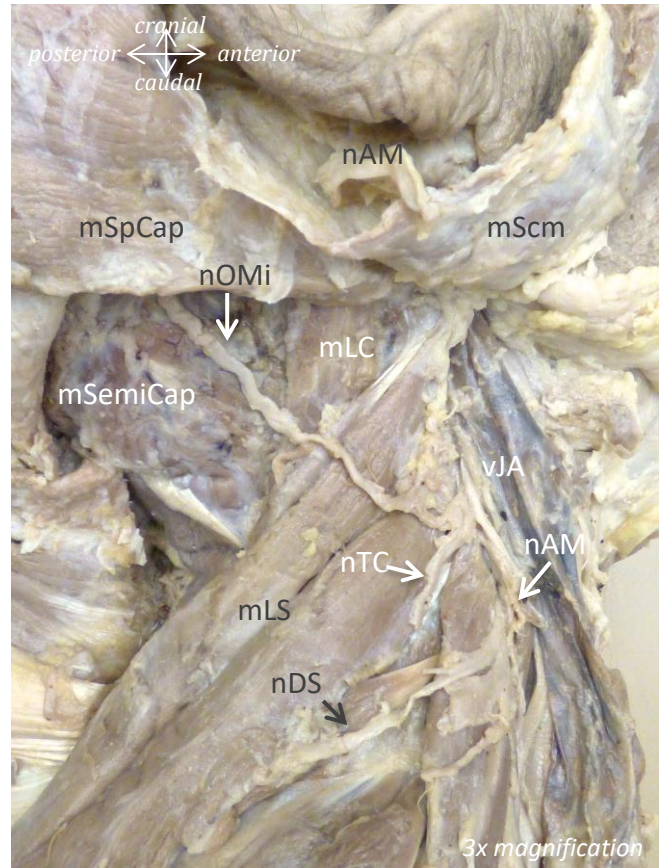
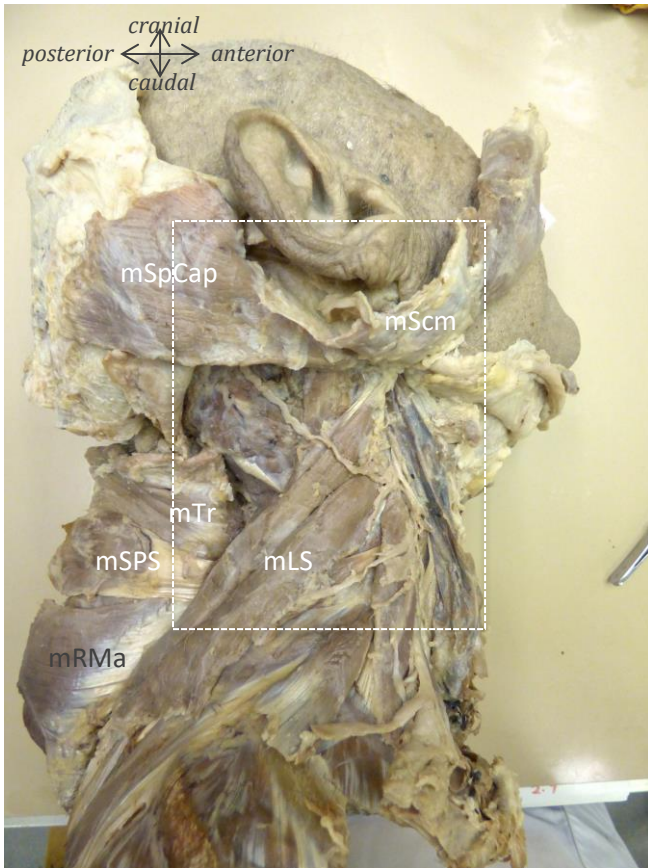
- mScm = m. sternocleidomastoideus (folded)
- mSpCap = m. spinalis capitis (folded)
- mSpCer = m. spinalis cervicis
- mSemiCap = m. semispinalis capitis
- mLS = m. levator scapulae (folded)
- mLC = m. longissimus capitis
- mTr = m. trapezius (folded)
- mRMa = m. rhomboideus major (folded)
- mSPS = m. serratus posterior superior (folded)

Nerves

- nAM = n. auricularis magnus
- nOMi = n. occipitalis minor (folded)

Vessels

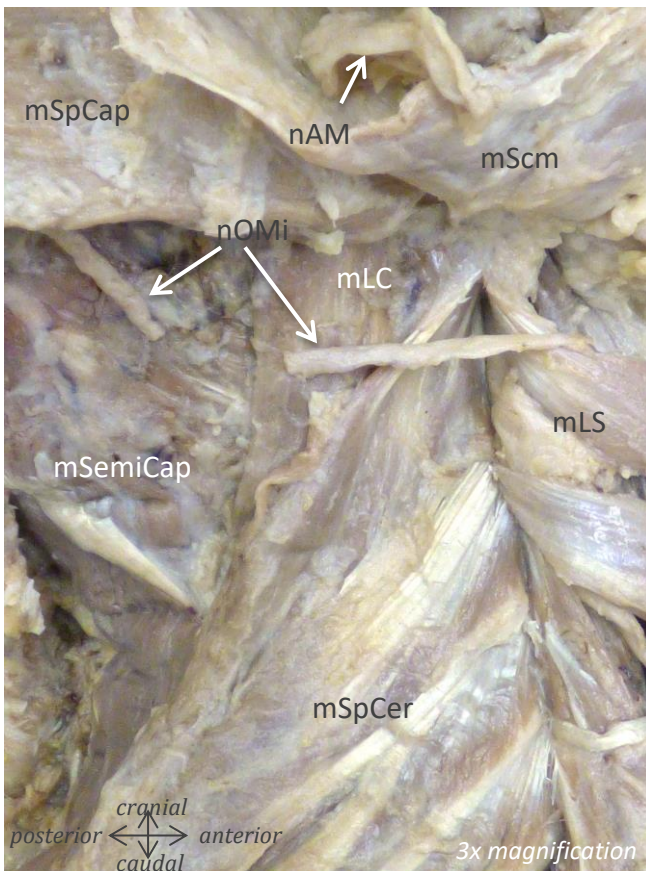
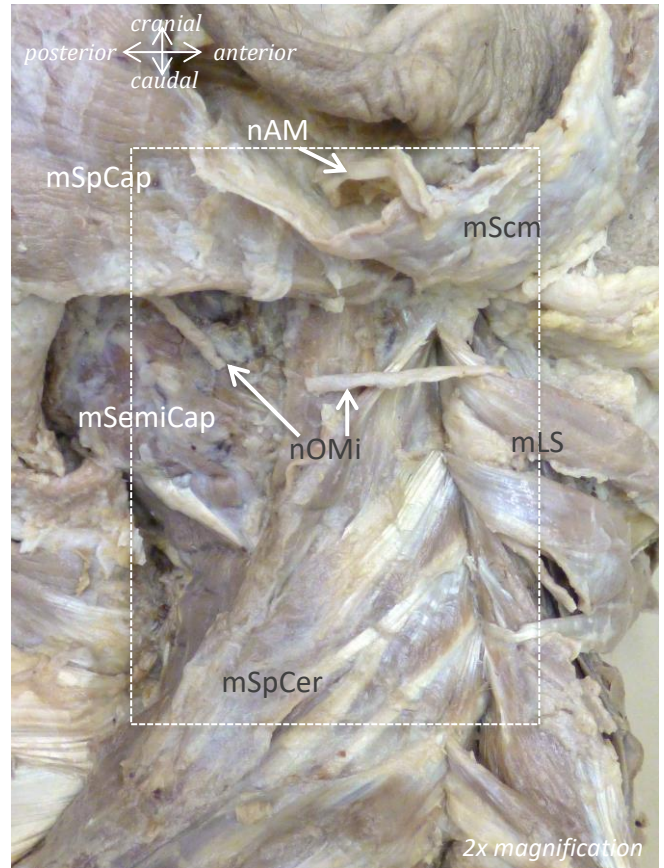
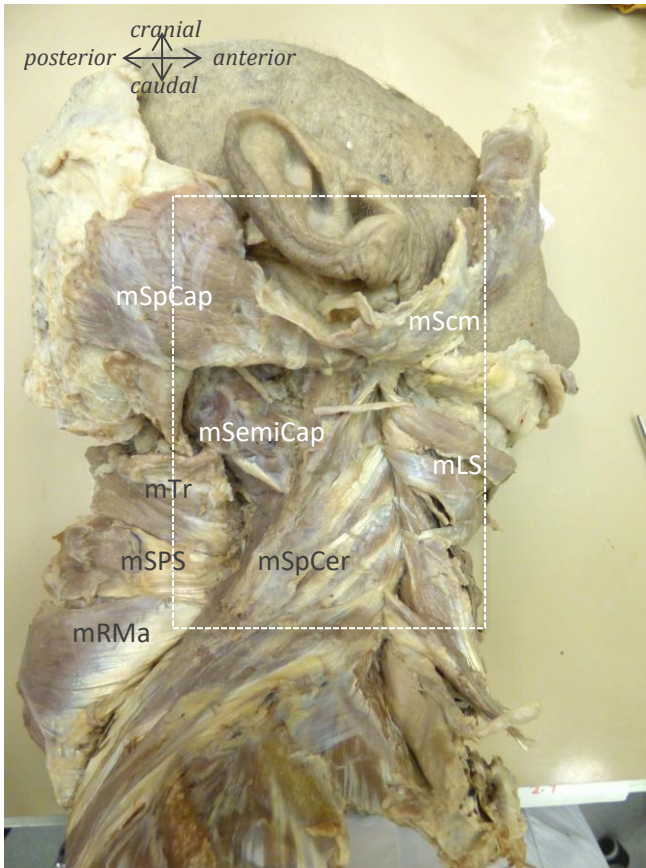
- A = artery



Muscles: mScm = m. Sternocleidomastoideus (folded); mLC = m. longissimus capitis; mLS = m. levator scapulae; mSpCap = m. spinalis capitis (folded); mSemiCap = m. semispinalis capitis; mScA = m. scalenus anterior; mScP = m. scalenus posterior; mScM = m. scalenus medius; mTr = m. trapezius; mSPS = m. serratus posterior superior; mRMa = m. rhomboideus major

Nerves: nAM = n. auricularis magnus (cut, flapped); nOMi = n. occipitalis minor; nDS = n. doralis scapulae; nTC = nervus transversus colli; ac = ansa cervicalis (n. hypoglossus); nV = n. vagus; nPh = n. phrenicus; PB = plexus brachialis

Male, 86 years of age

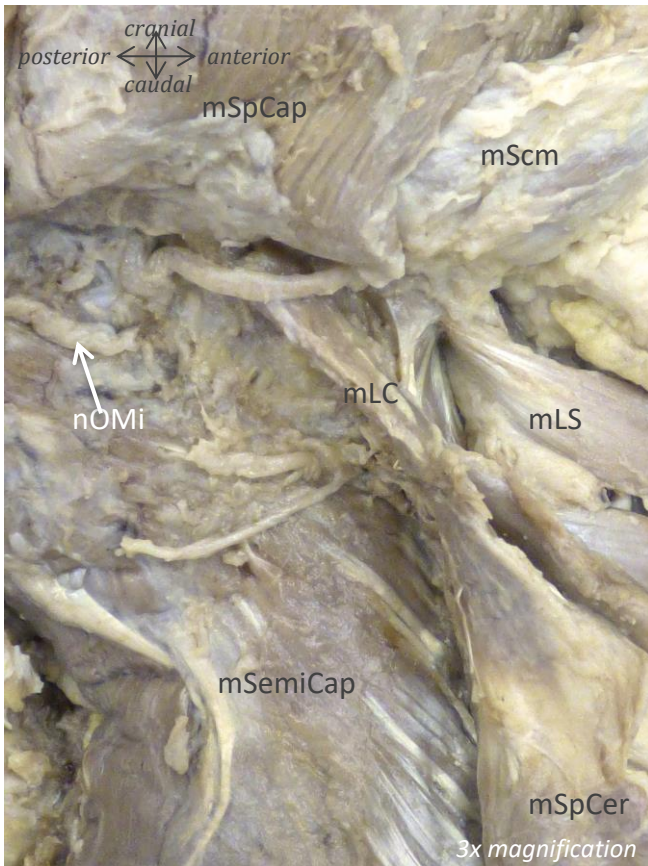
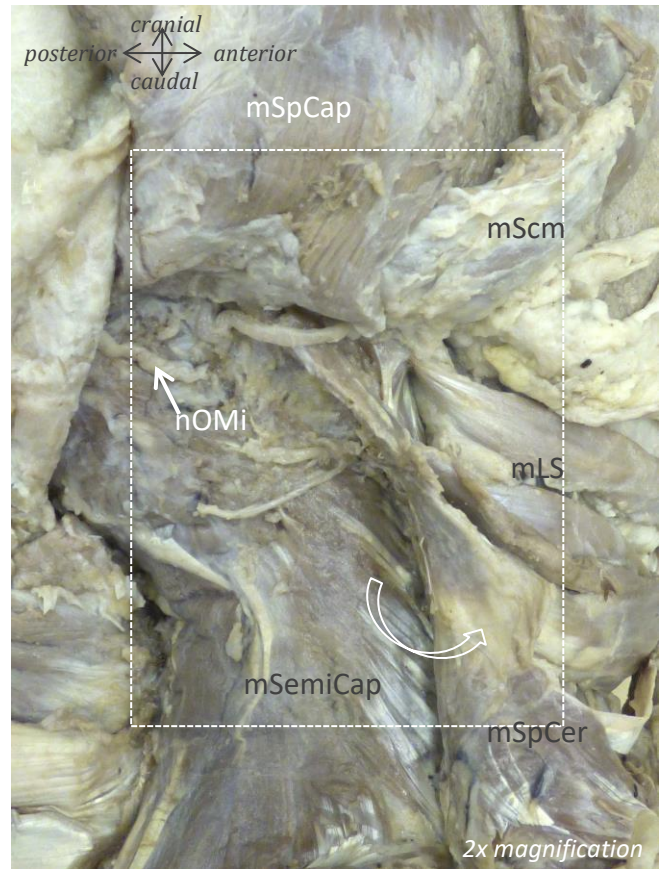
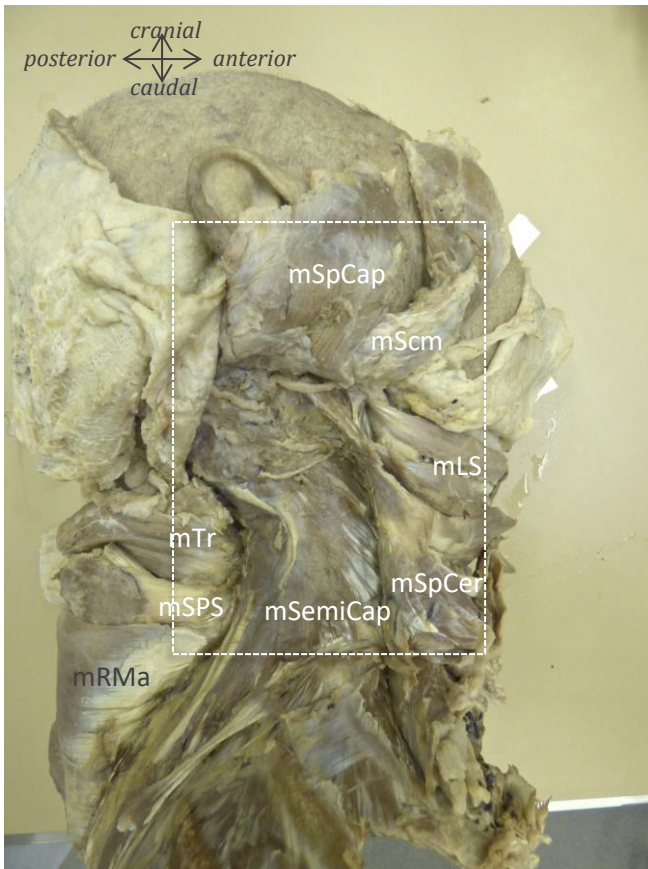


Muscles

- mScm = m. sternocleidomastoideus (folded)
- mLS = m. levator scapulae
- mLC = m. longissimus capitis
- mSpCap = m. spinalis capitis (folded)
- mSemiCap = m. semispinalis capitis
- mSpCer = m. spinalis cervicis
- mTr = m. trapezius (folded)
- mSPS = m. serratus posterior superior (folded)
- mRMa = m. rhomboideus major (folded)

Nerves

- nAM = n. auricularis magnus
- nOMi = n. occipitalis minor (cut)

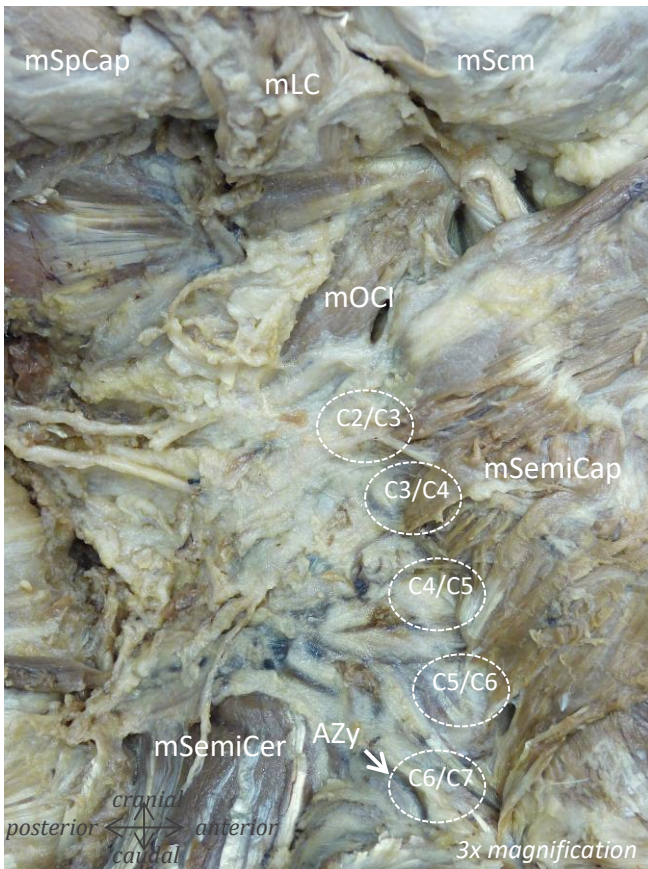
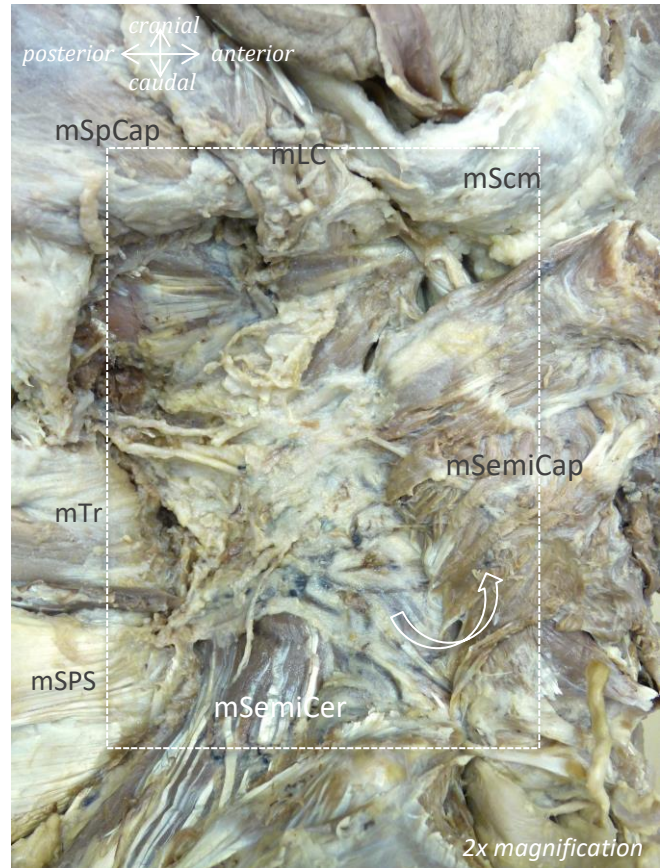
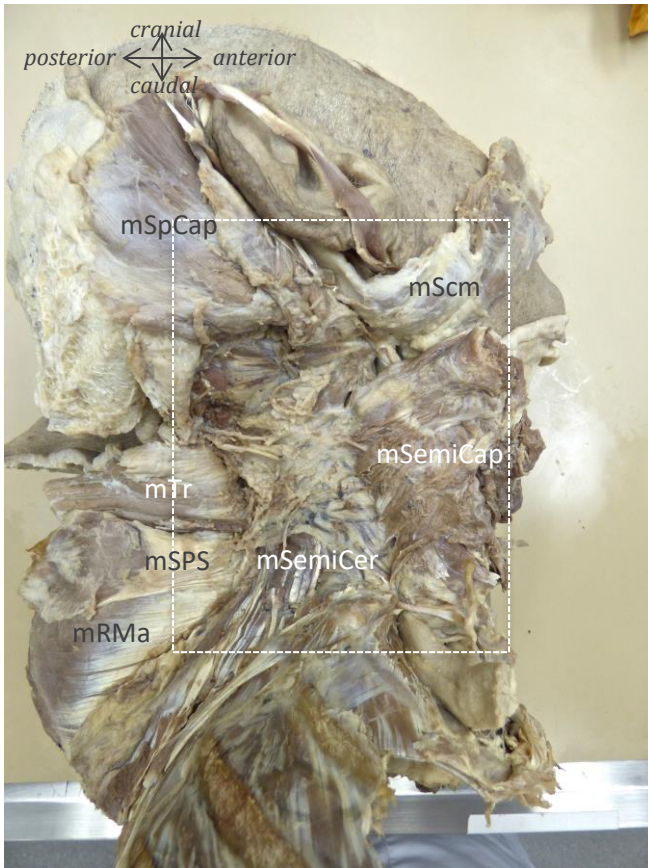


Muscles

- mScm = m. sternocleidomastoideus (folded)
- mLS = m. levator scapulae (folded)
- mLC = m. longissimus capitis
- mSpCap = m. spinalis capitis (folded)
- mSemiCap = m. semispinalis capitis
- mSpCer = m. spinalis cervicis (folded)
- mTr = m. trapezius (folded)
- mSPS = m. serratus posterior superior (folded)
- mRMa = m. rhomboideus major (folded)

Nerves

- nOMi = n. occipitalis minor



Muscles

- mScm = m. sternocleidomastoideus (folded)
- mLC = m. longissimus capitis (folded)
- mSpCap = m. spinalis capitis (folded)
- mSemiCap = m. semispinalis capitis (folded)
- mSemiCer = m. semispinalis cervicis
- mTr = m. trapezius (folded)
- mSPS = m. serratus posterior superior (folded)
- mRMa = m. rhomboideus major (folded)
- mOCI = m. obliquus capitis inferior

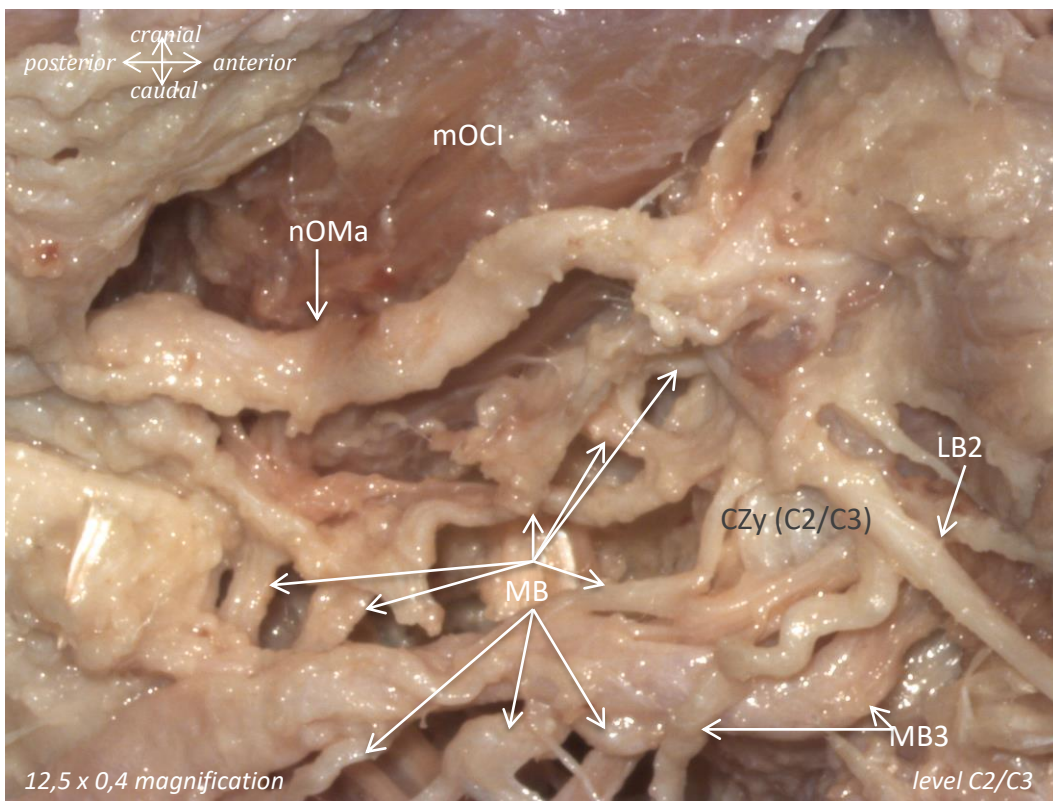
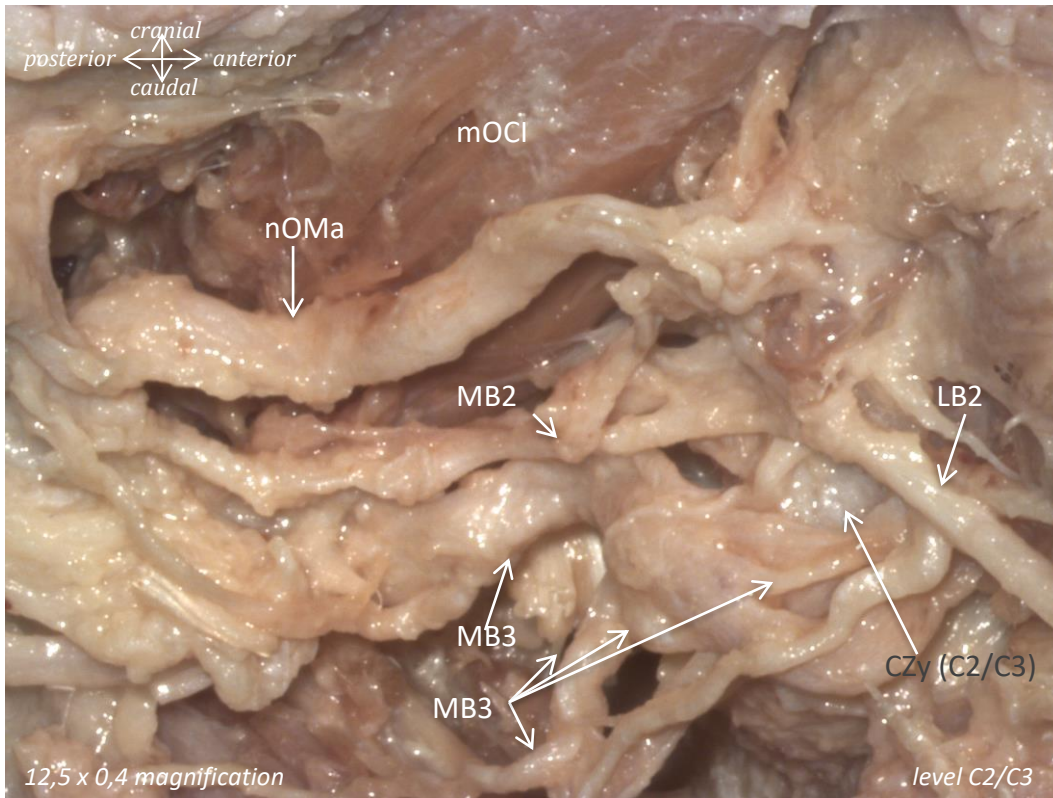
Extra

AZy = articulatio zygapophysealis

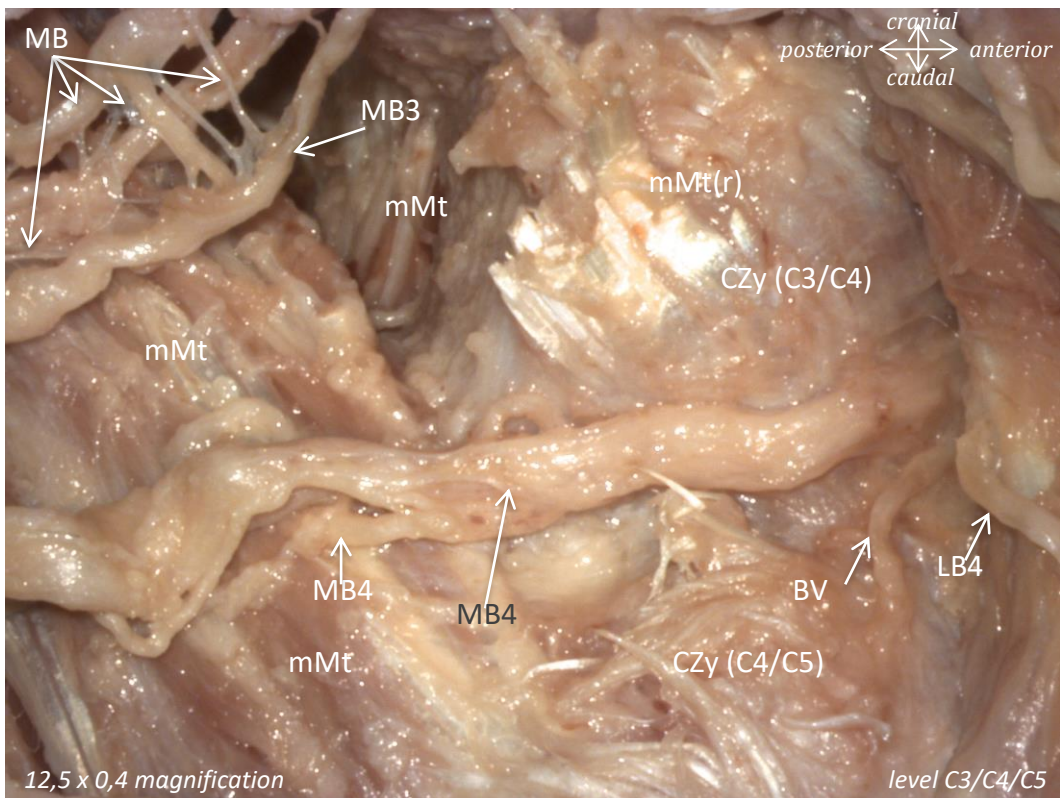
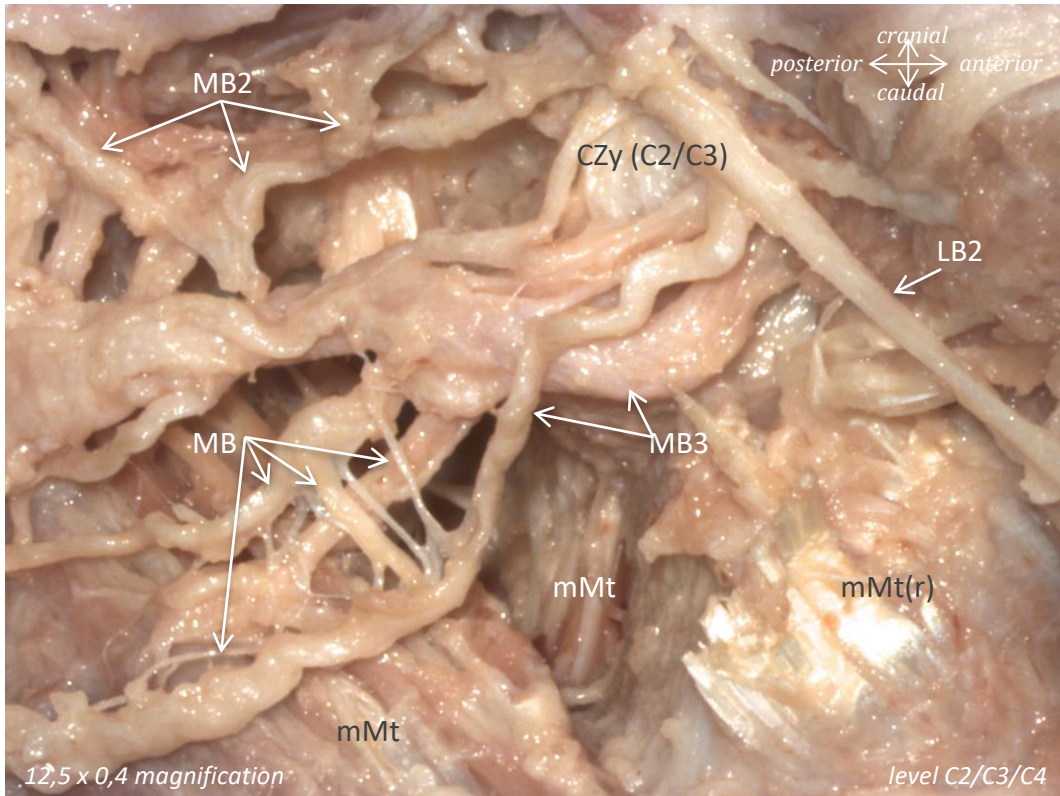


Muscles: mOCI = m. obliquus capitis inferior; mMt = m. multifidi; mSemiCap = m. semispinalis capitis; mSemiCer = m. semispinalis cervicis
Nerves: nOMA = n. occipitalis major; LB = lateral branch; MB = medial branch
Extra: CZy = capsula articulationis zygapophysialis

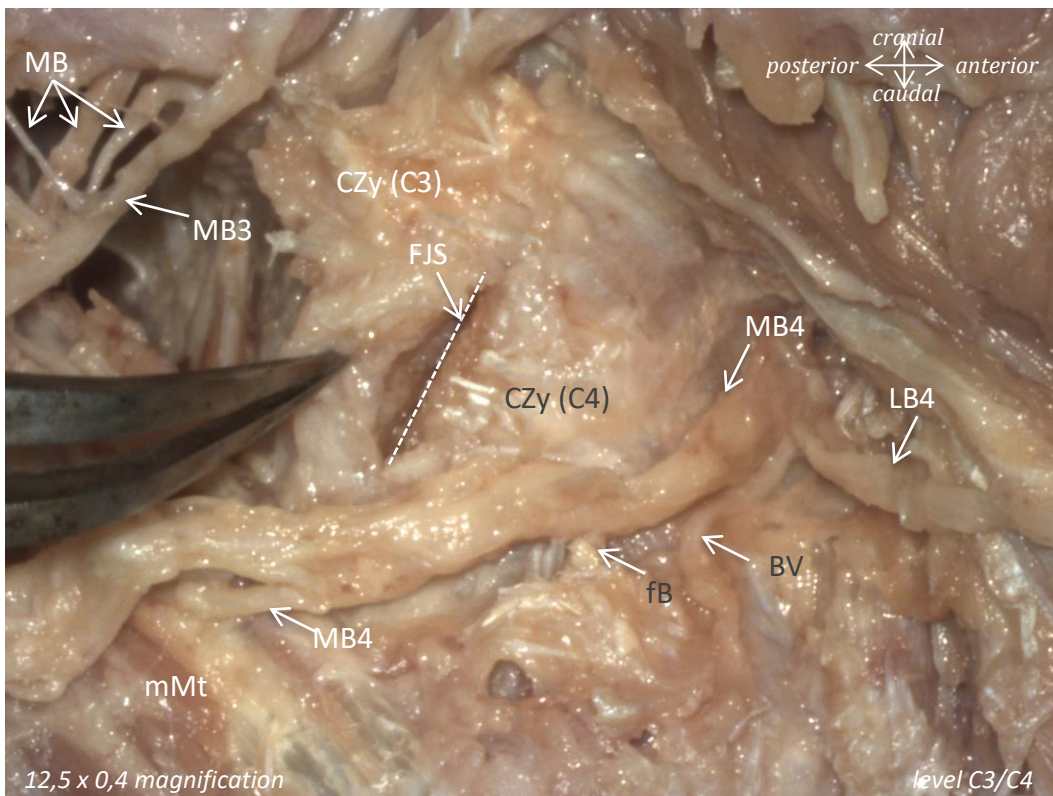
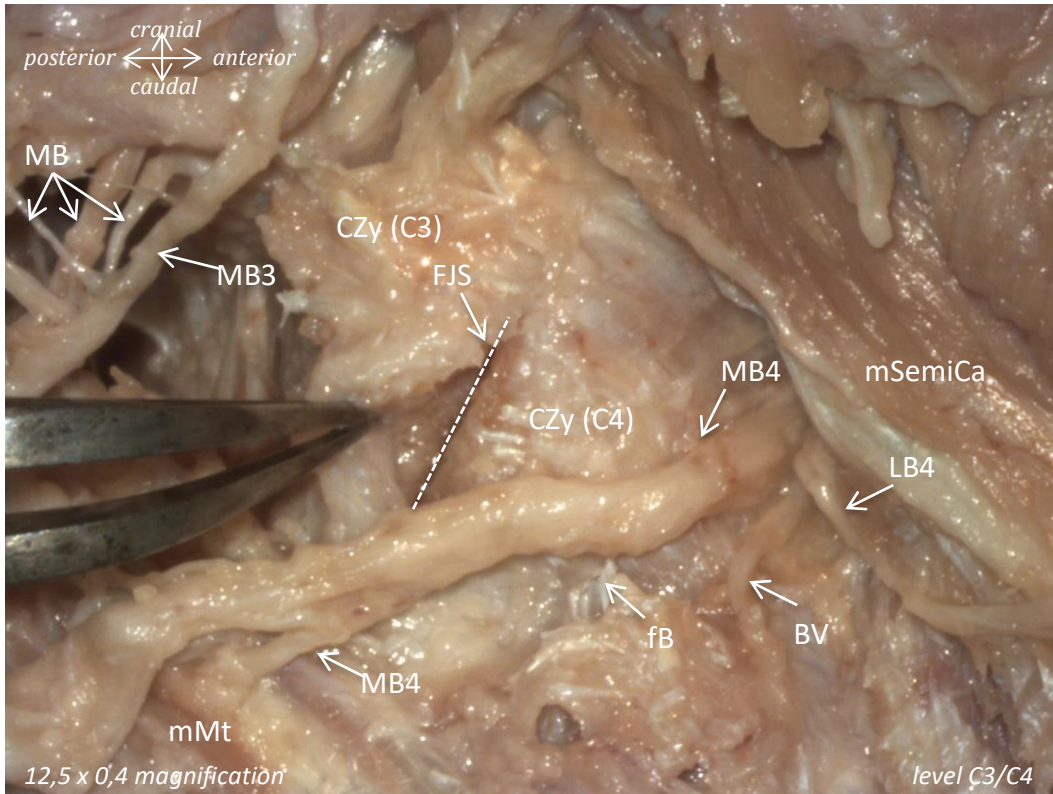
Male, 86 years of age



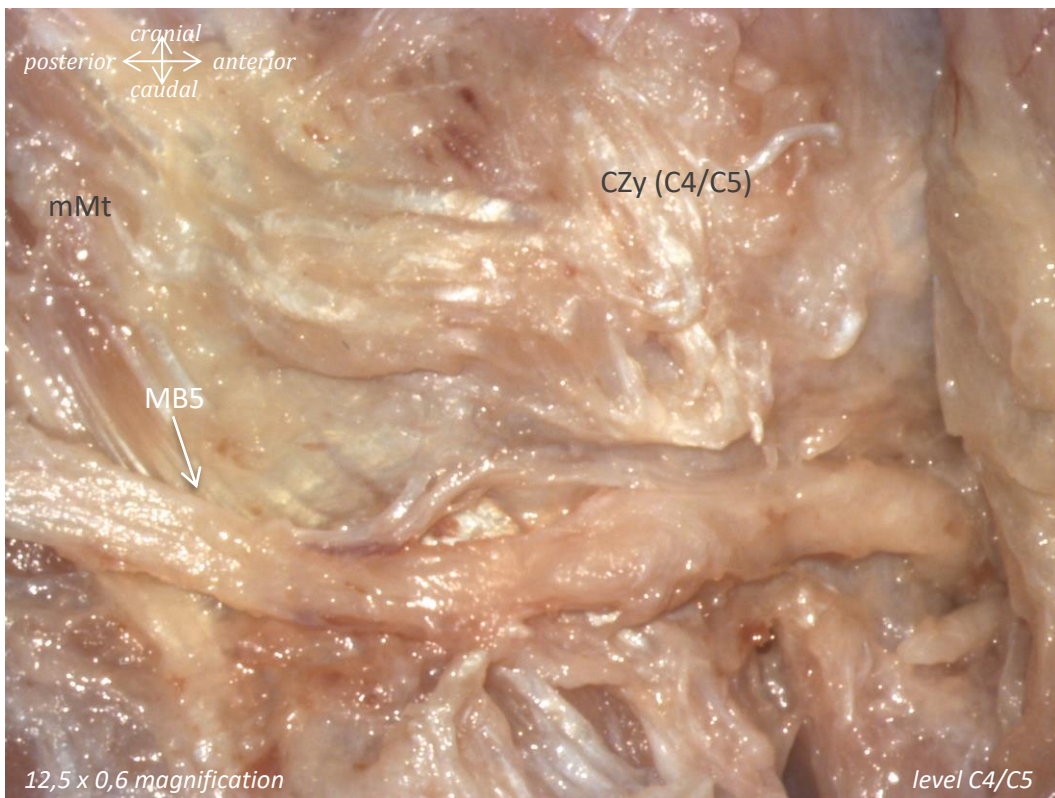
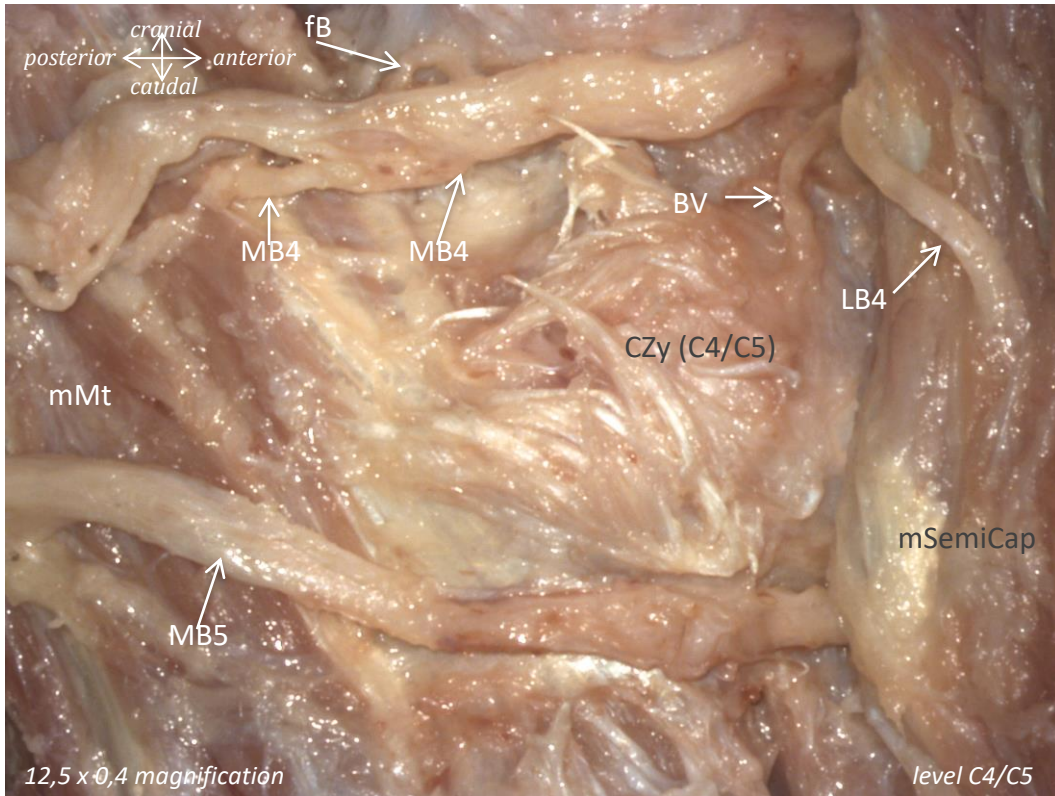
Muscles: mOCl = m. obliquus capitis inferior
Nerves: nOMa = n. occipitalis major; LB = lateral branch; MB = medial branch
Extra: CZy = capsula articulationis zygapophysialis



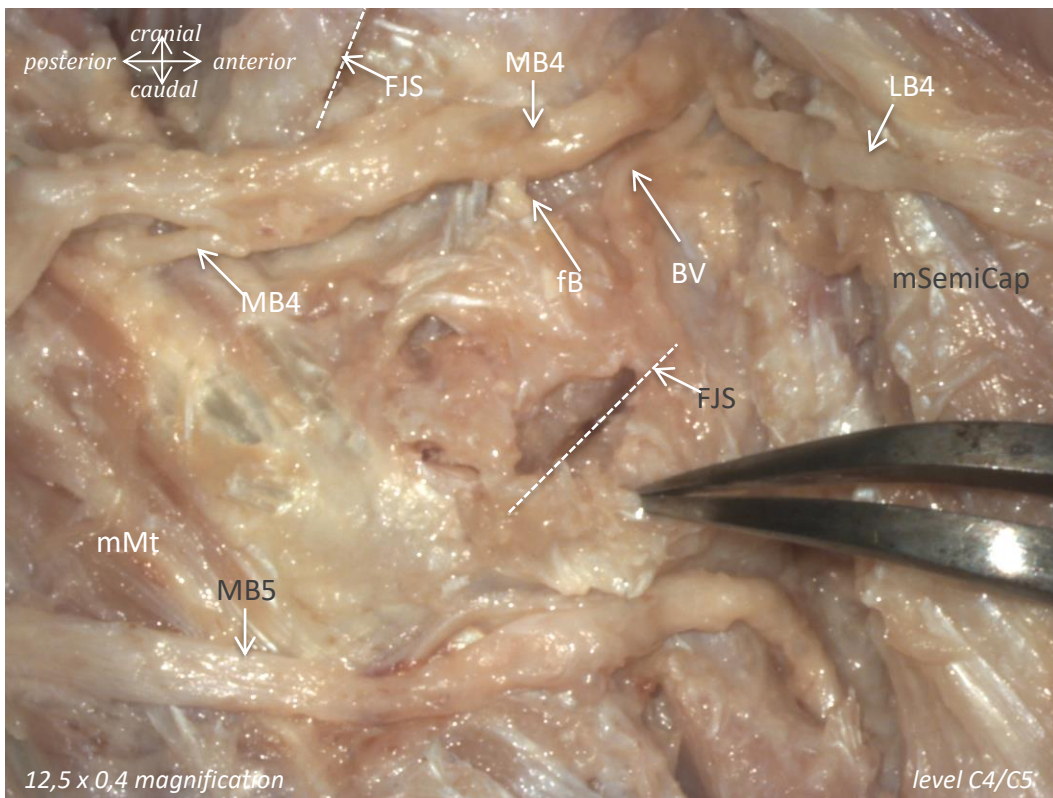
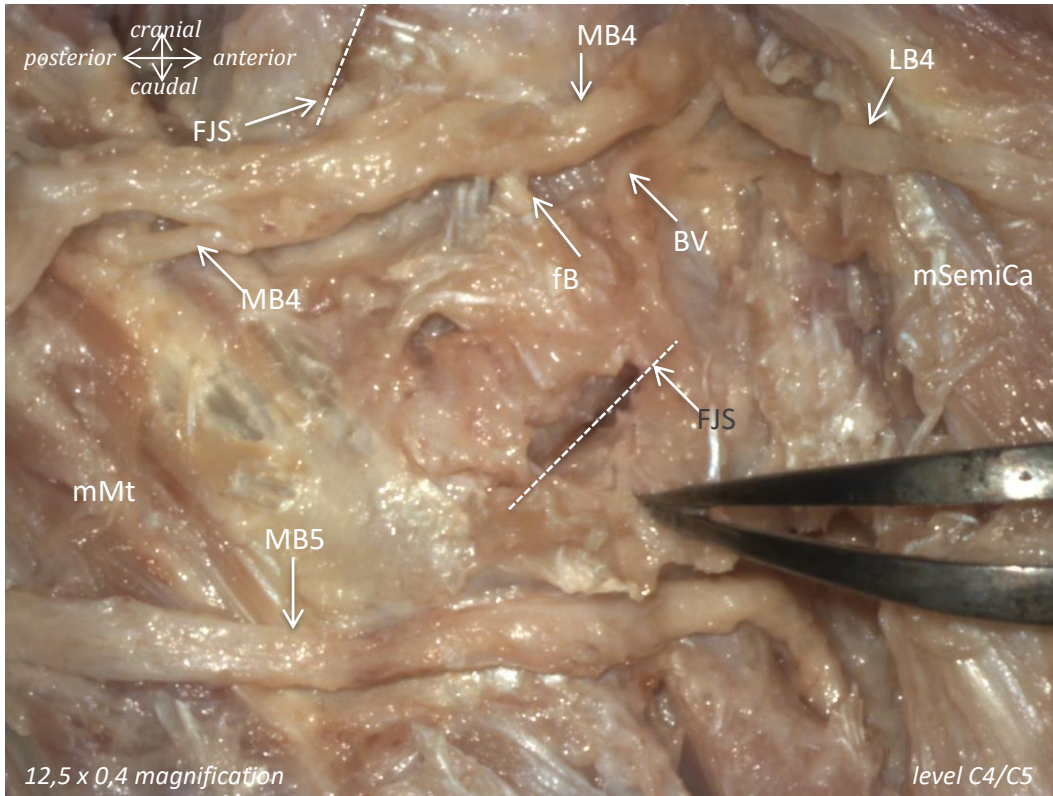
Muscles: mMt = m. multifidi; mMt(r) = m. multifidi (removed)
Nerves: LB = lateral branch; MB = medial branch;
Extra: CZy = capsula articulatio zygapophysealis; BV= blood vessel



Muscles: mMt = m. multifidi; mSemiCap = m. semispinalis capitis
Nerves: LB = lateral branch; MB = medial branch; fB = facet joint branch
Extra: CZy = capsula articulatio zygapophysealis; FJS = facet joint space; BV= blood vessel

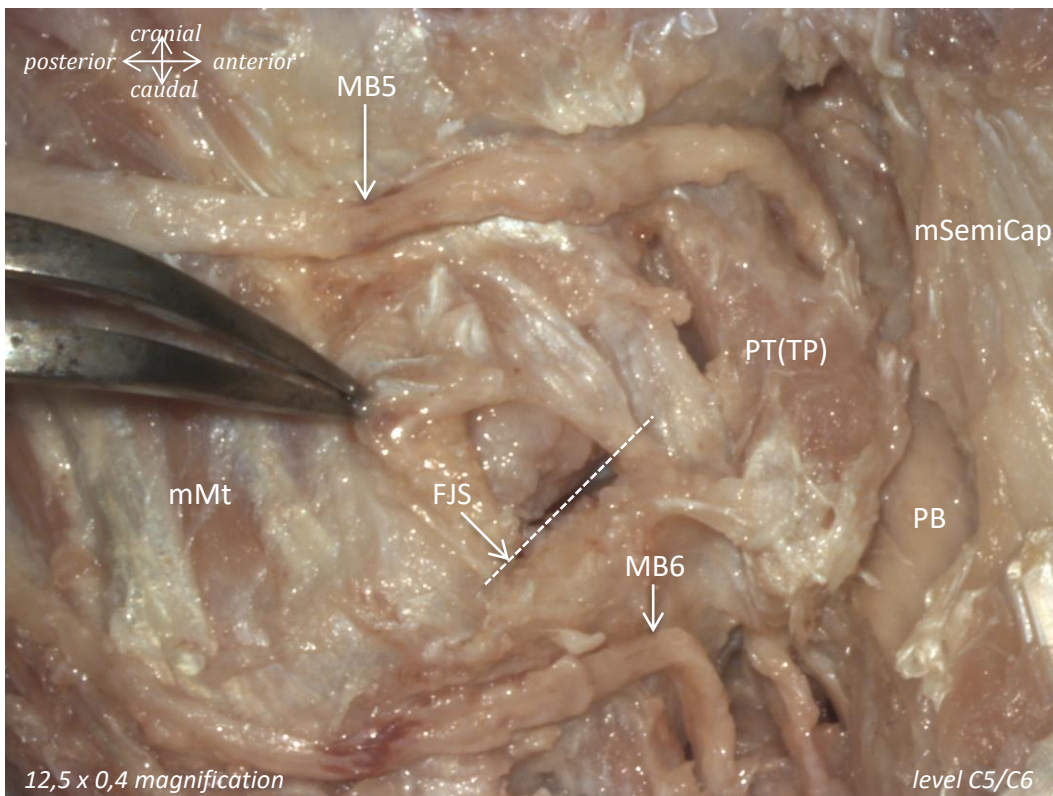
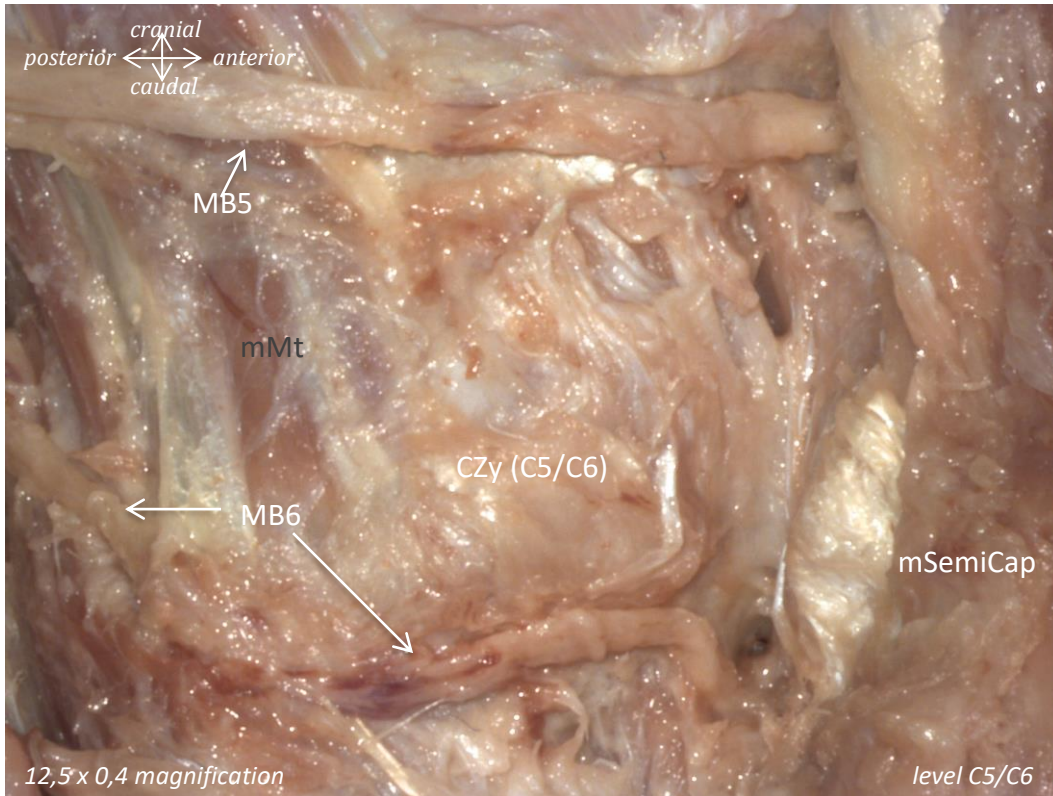


Muscles: mMt = m. multifidi; mSemiCap = m. semispinalis capitis
Nerves: LB = lateral branch; MB = medial branch; fB = facet joint branch
Extra: CZy = capsula articulatio zygapophysealis



Muscles: mMt = m. multifidi; mSemiCap = m. semispinalis capitis
Nerves: LB = lateral branch; MB = medial branch; FB = facet joint branch
Extra: FJS = facet joint space; BV= blood vessel

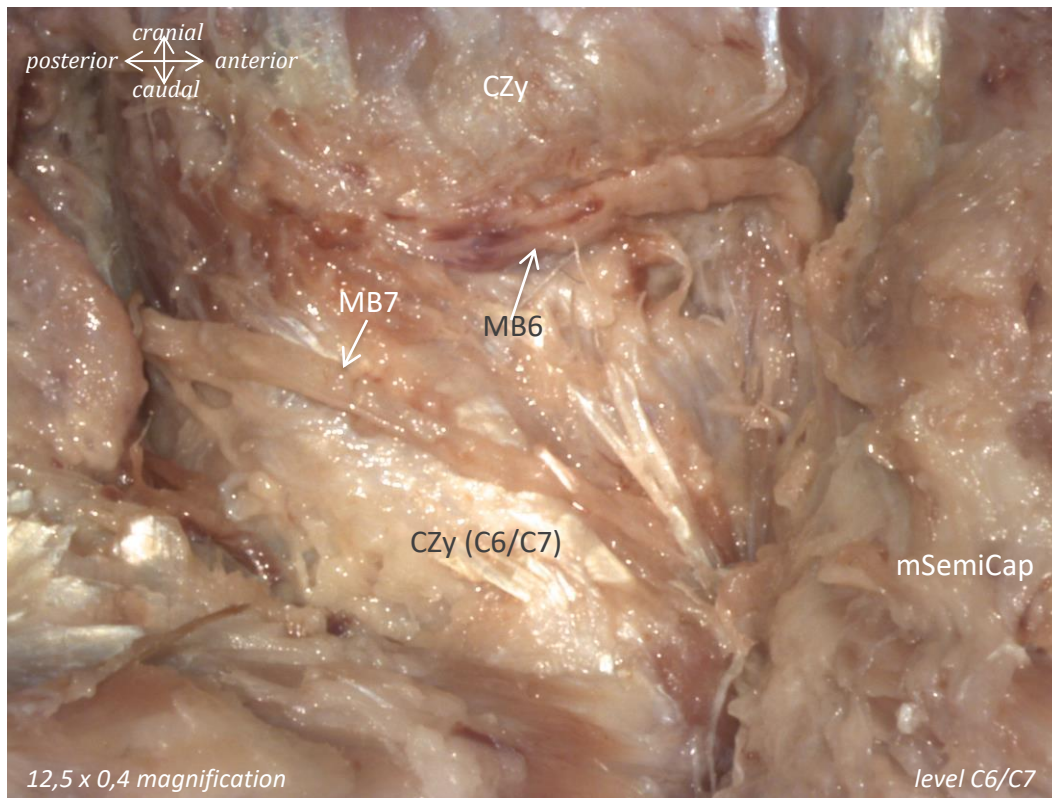
Male, 86 years of age



Muscles: mMt = m. multifidi; mSemiCap = m. semispinalis capitis

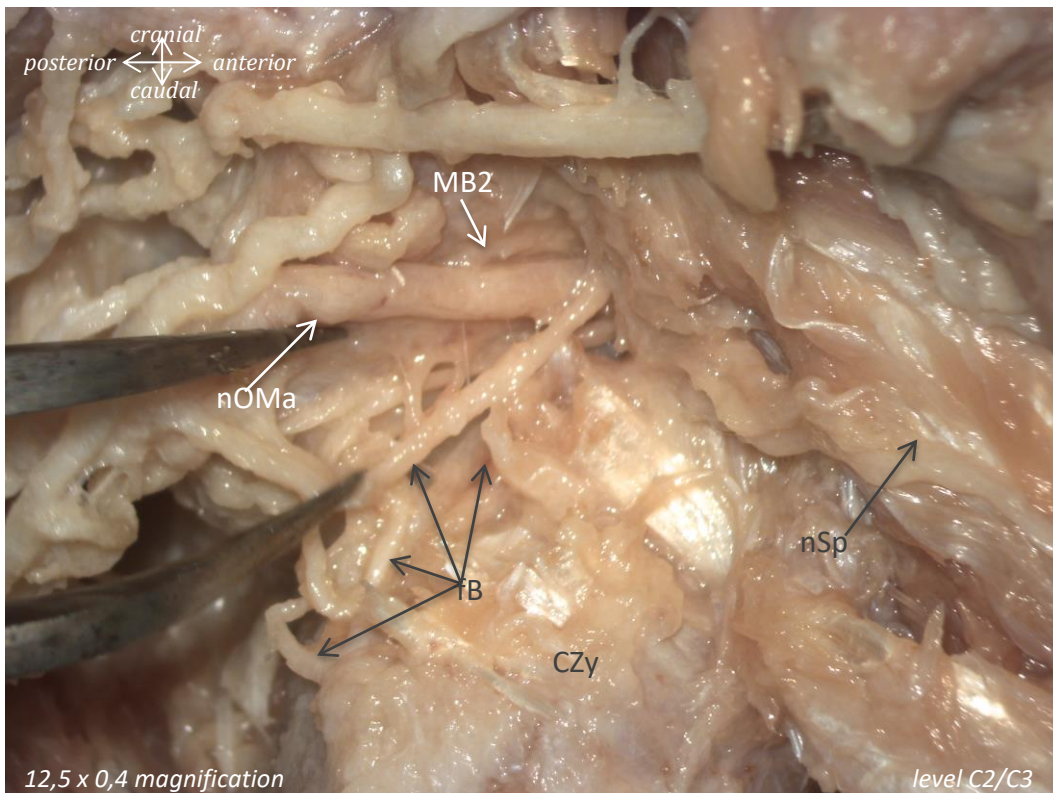
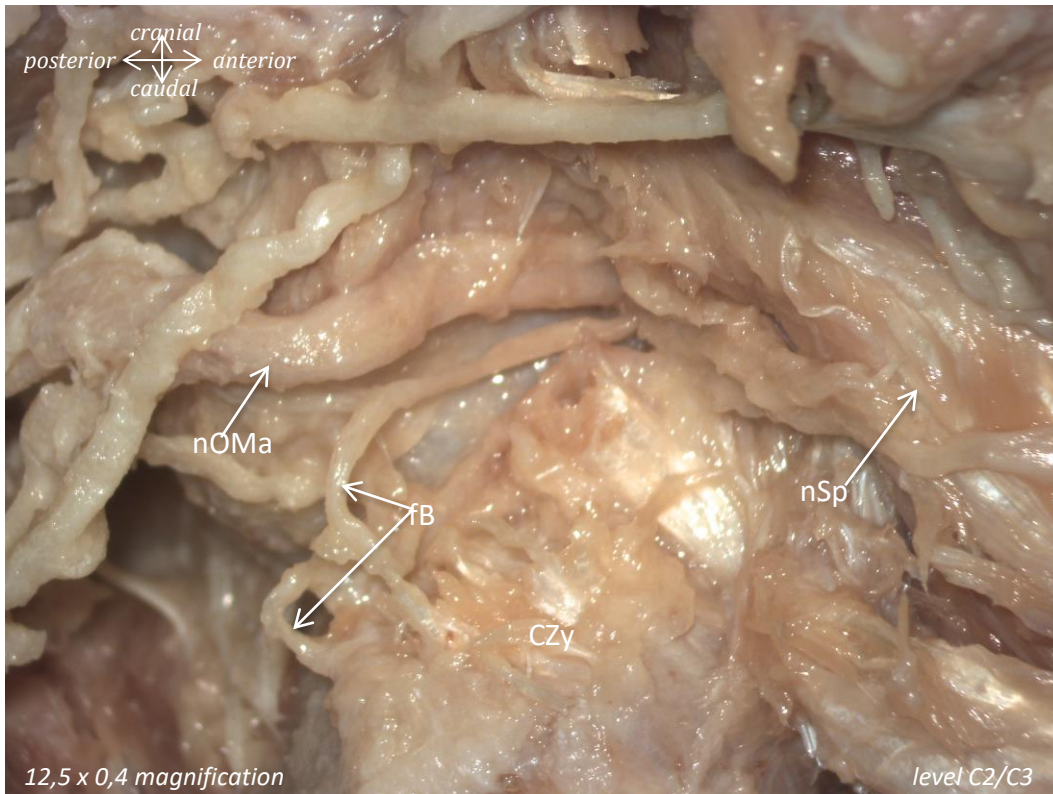
Nerves: LB = lateral branch; MB = medial branch; PB = plexus brachialis

Extra: CZy = capsula articulationis zygapophysialis; FJS = facet joint space; PT(TP) = processus transversus (tuberculum posterius)



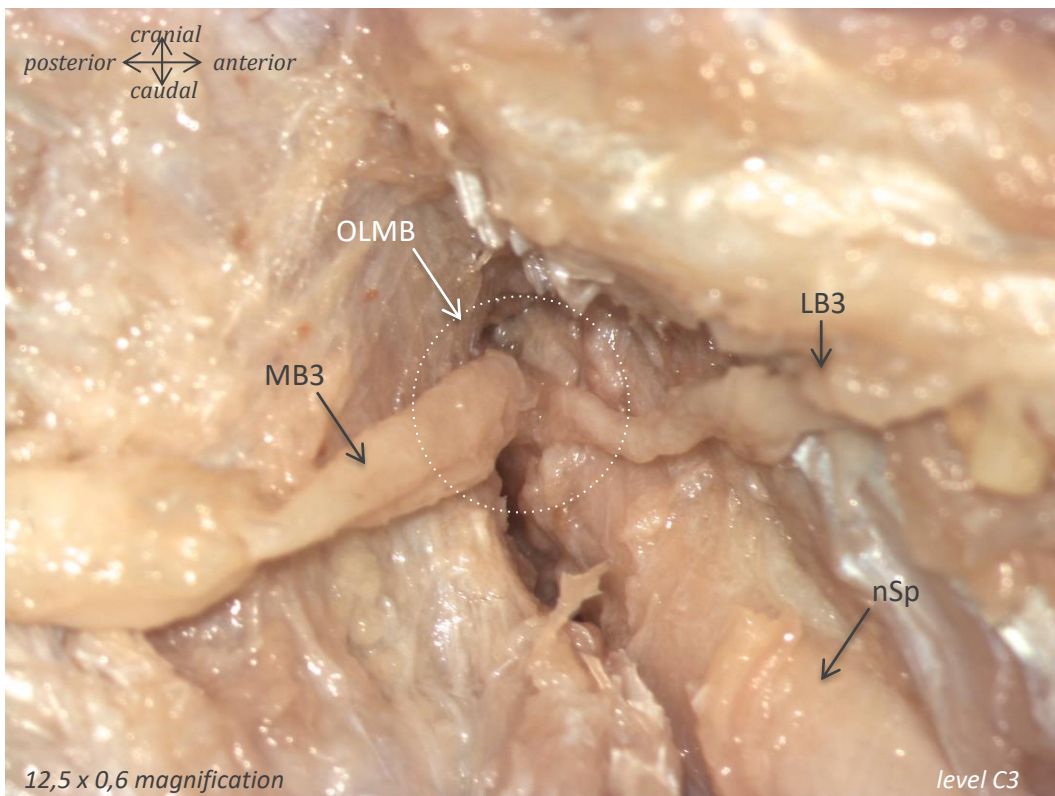
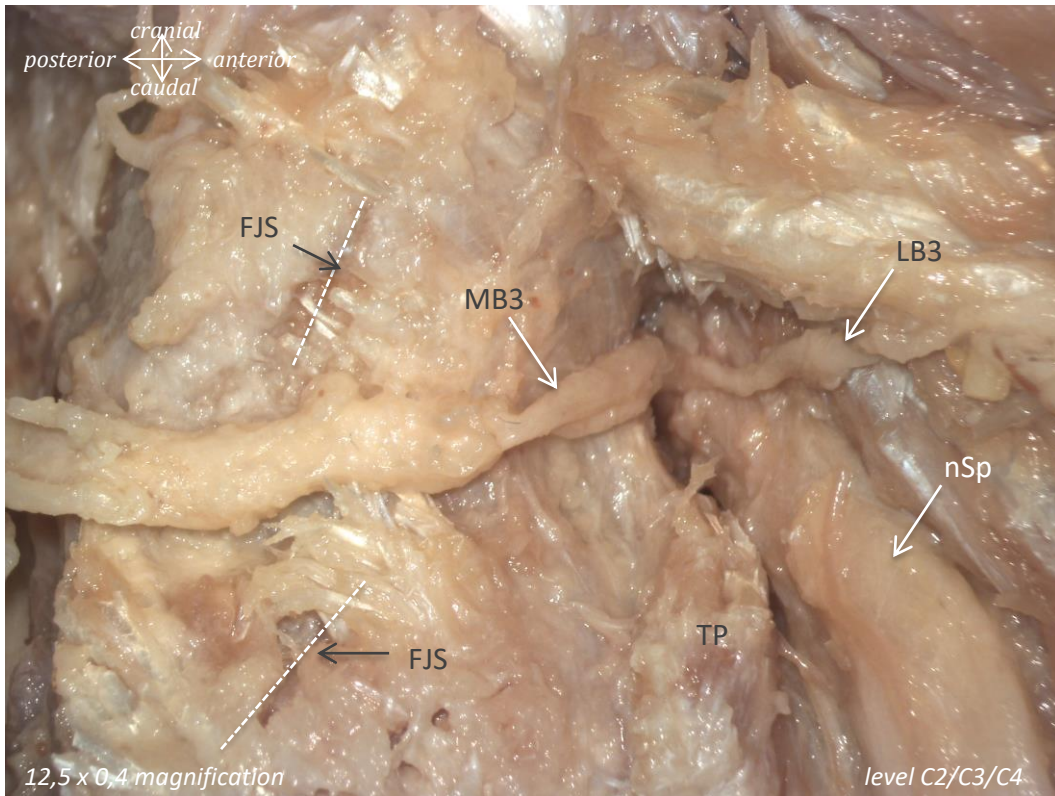
Muscles: mMt = m. multifidi; mSemiCap = m. semispinalis capitis
Nerves: LB = lateral branch; MB = medial branch; PB = plexus brachialis
Extra: CZy = capsula articulatio zygapophysealis; FJS = facet joint space

Origin medial branch



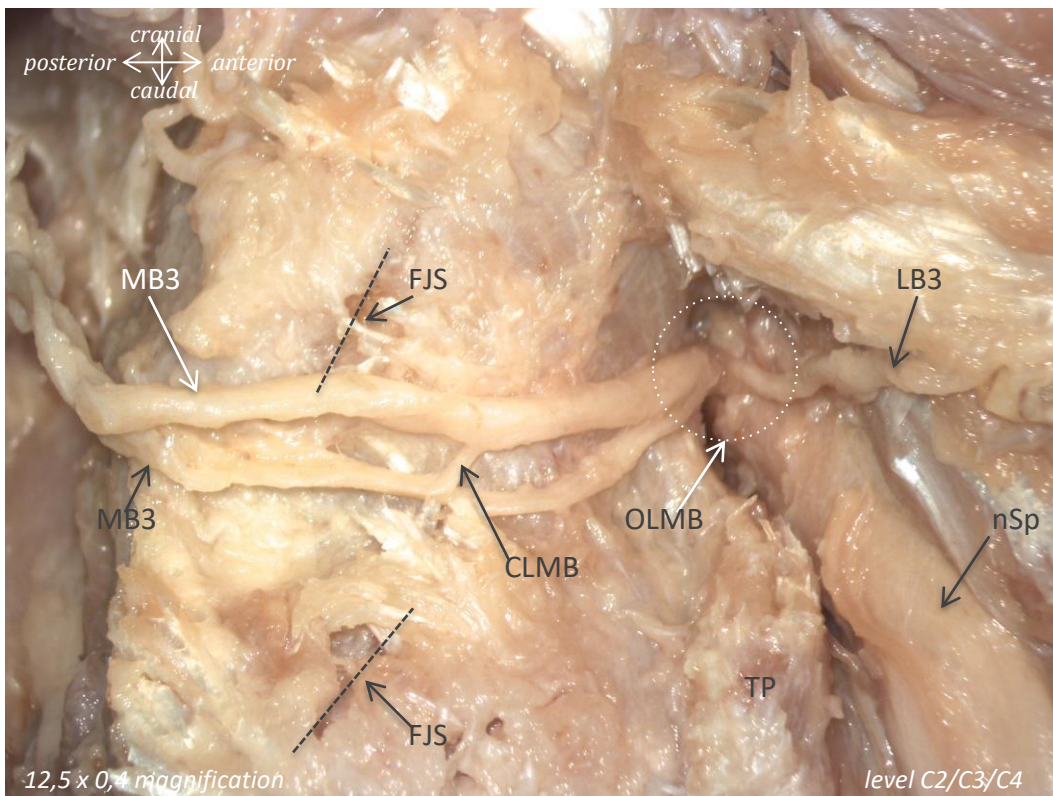
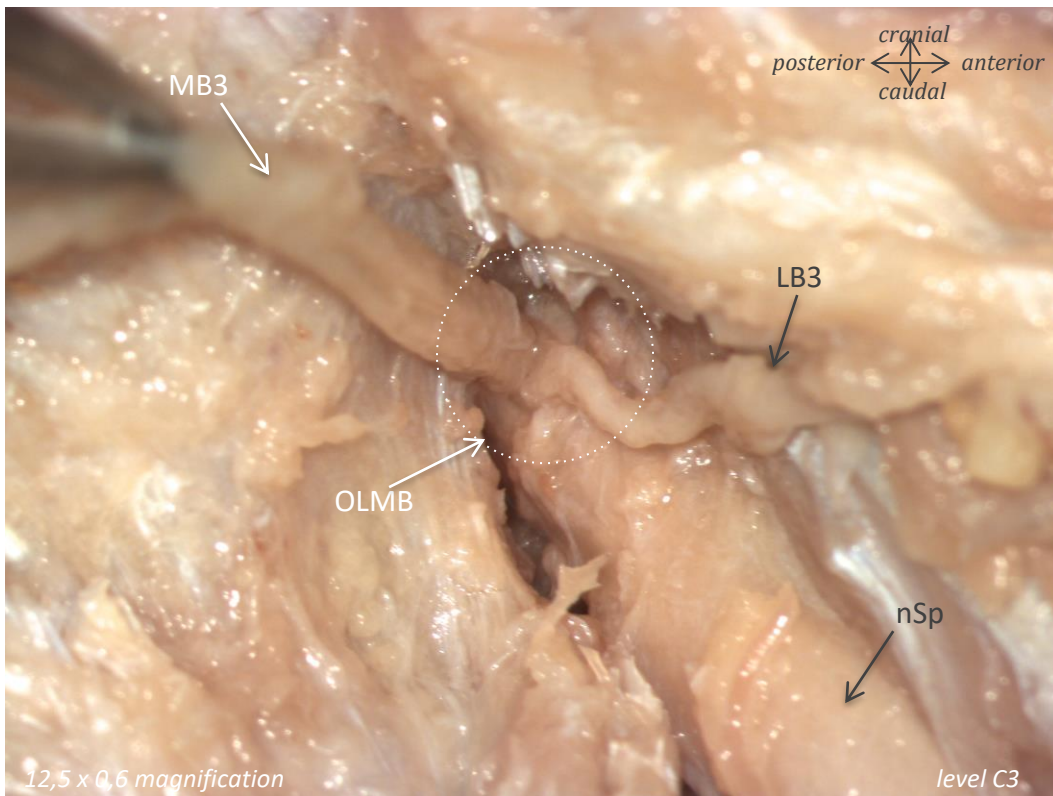
Nerves: nOMa = n. occipitalis major; MB = medial branch; fB = facet joint branch; nSp = n. spinalis
Extra: CZy = capsula articulatio zygapophysealis

Male, 86 years of age



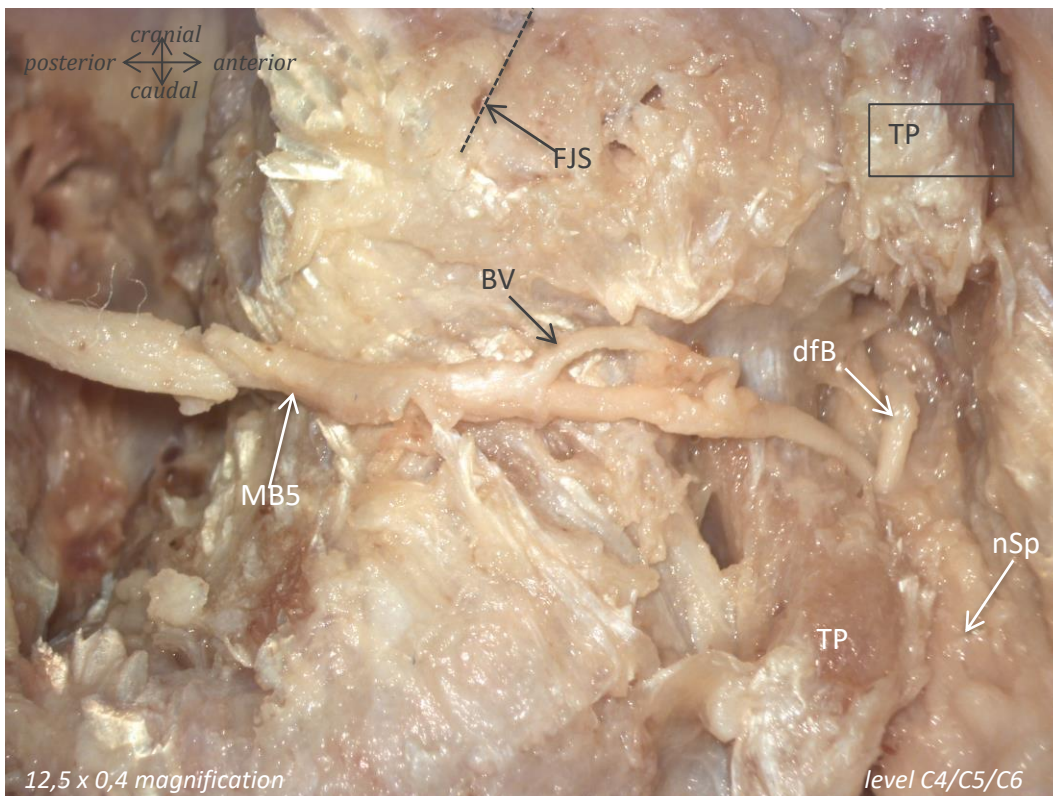
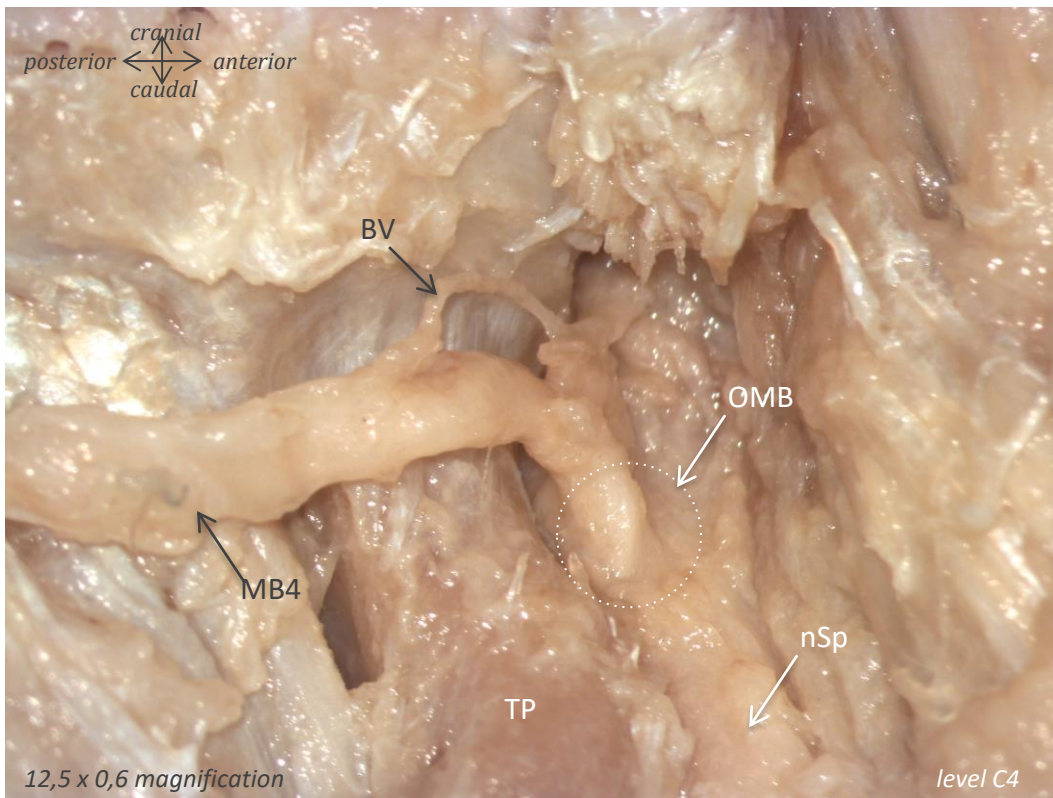
Nerves: LB = lateral branch; MB = medial branch; OLMB = origin lateral and medial branch;
nSp = n. spinalis
Extra: TP = tuberculum posterior; FJS = facet joint space

Male, 86 years of age

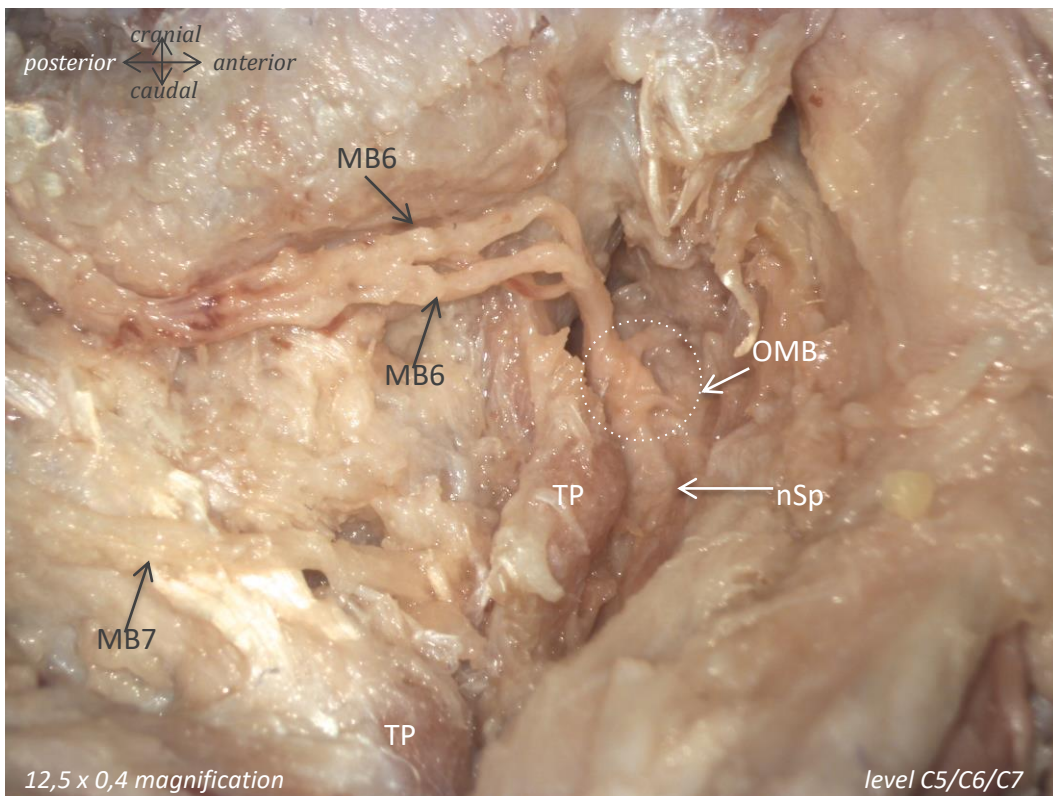
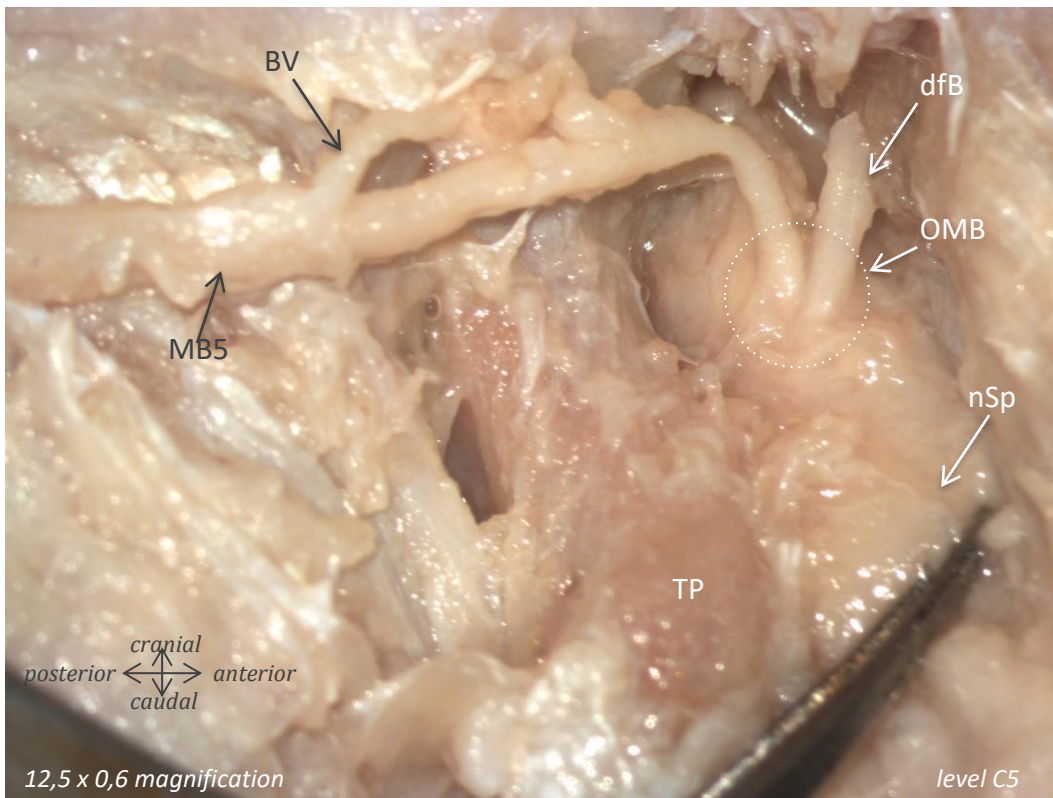


Nerves: LB = lateral branch; MB = medial branch; OLMB = origin lateral and medial branch; CLMB = connecting branch between medial branches; nSp = n. spinalis
Extra: TP = tuberculum posterior; FJS = facet joint space

Male, 86 years of age

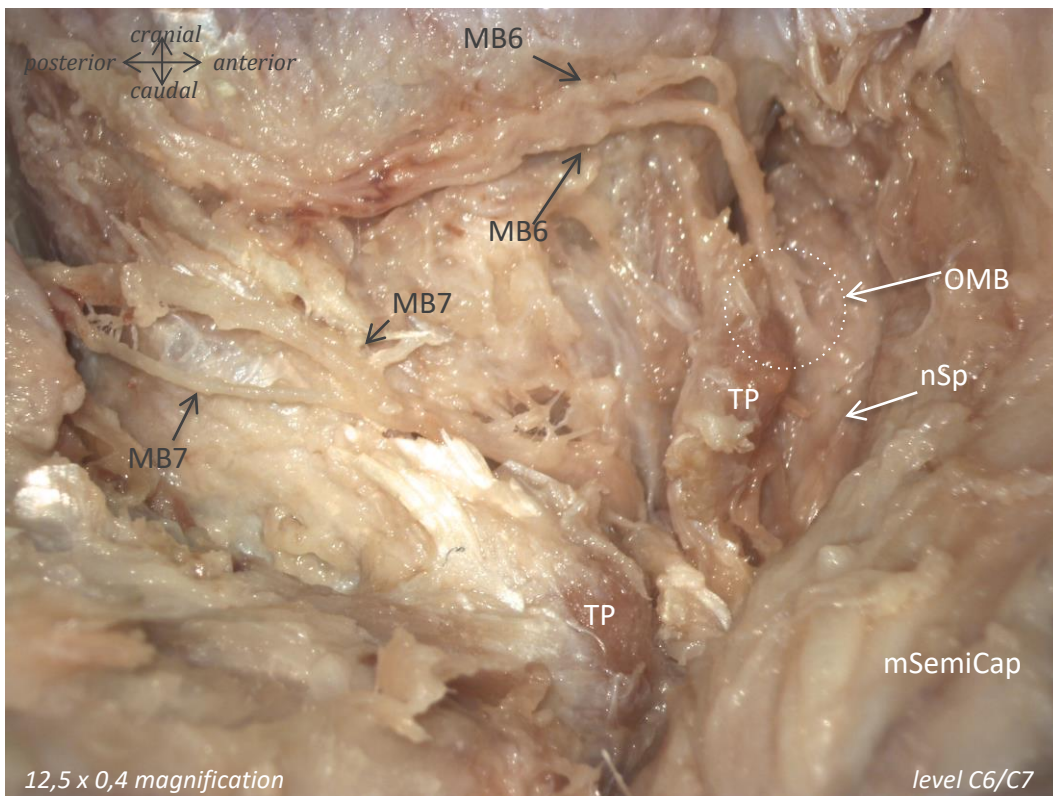
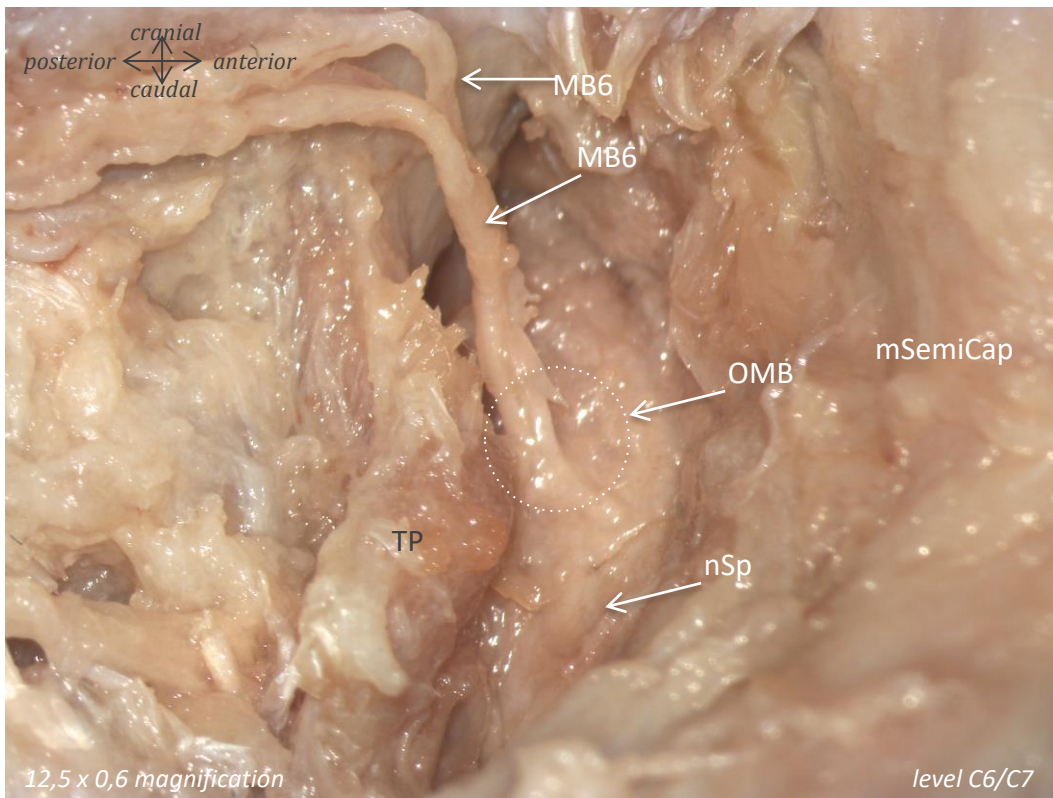


Nerves: MB = medial branch; OMB = origin medial branch; nSp = n. spinalis; dfB= direct facet joint branch
Extra: TP = tuberculum posterius; FJS = facet joint space

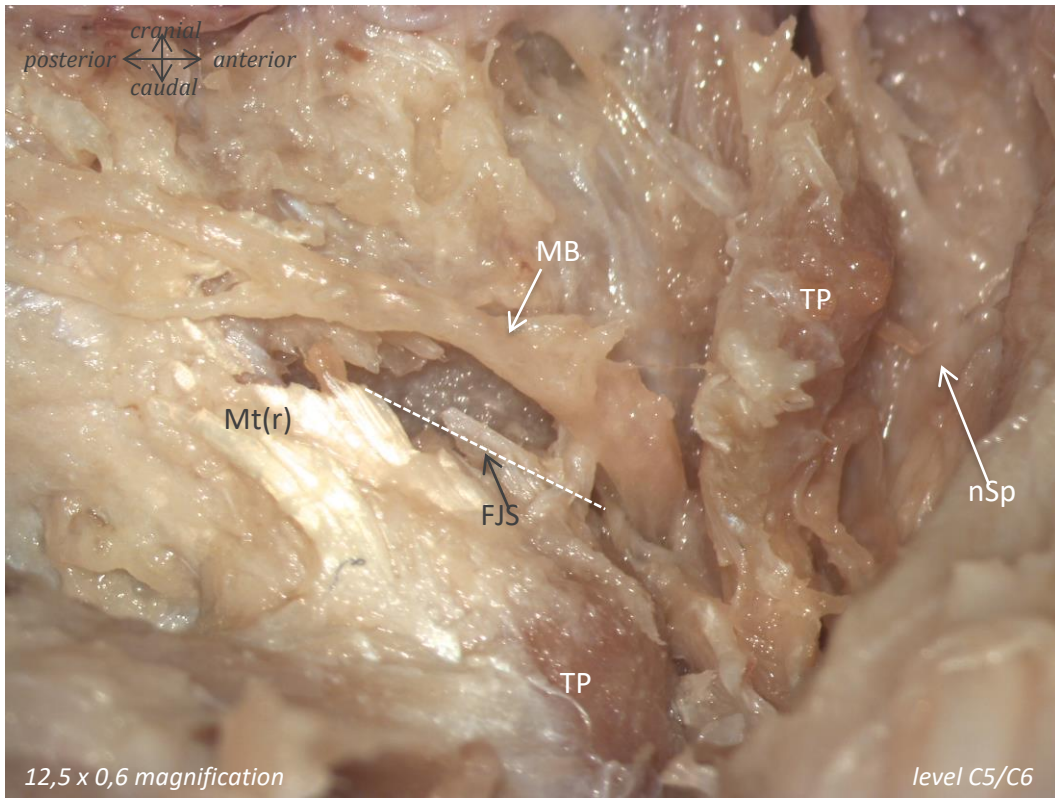


Nerves: MB = medial branch; OMB = origin medial branch; nSp = n. spinalis; dfB= direct facet joint branch
Vessels: BV = blood vessel
Extra: TP = tuberculum posterior

Male, 86 years of age



Muscles: mSemiCap = m. semispinalis capitis
Nerves: MB = medial branch; OMB = origin medial branch; nSp = n. spinalis
Extra: TP = tuberculum posterior



Male, 86 years of age